



Welding & Cutting Torch Technology

Product Catalogue

A-LW Series



About Us

Uniarc is part of a group of companies specializing in the production of Welding and Cutting torches.

With over 40 years experience, the group is positioned as a global leader at the heart of the welding torch industry.

Originally established in the United Kingdom in the 1980's, the company is now a fully-fledged, vertically integrated Chinese product innovator and manufacturer.

Our customers span a full cross section of the industry, ranging from general distribution to leading global original equipment manufacturers.

Our products are used in a broad cross-section of industrial sectors ranging from auto body repair to ship building.

Whether you need a standard off the shelf product or a customized branded option with your own colours, logos and packaging we have a one stop solution for your requirements.

Our team are here to help, contact us today if you need anymore information.



find out more www.uniarctorchology.com

Contents

Features Focus	2
Range Overview	3

Torch Model

PGA-LW255	4
PGA-LW355	5
PGA-LW455	6

Wear Parts

BZL Nozzles	7
BZL Contact Tips	7
BZL Tip Adaptors	9
BZL Liners	10

Consumable Parts

All wear and spare parts are manufactured to the same specification as the OEM and are fully interchangeable.

The range utilizes industry standard contact tips and a new screw on nozzle range.

Wear parts inventory is reduced by the use of one diffuser/ nozzle retaining assembly.

Trigger

Rapid field servicing ensured by a simple "plug and play" system.

Switches can be exchanged in 5 seconds without the use of tools.

Knuckle Joint and Cable Support

Small movements of the handle and neck are possible independent of the cable assembly. A moulded polymer cable support increases flexibility and electrode support.



Spring Pins

Fitted with unbreakable spring loaded gun plug body pins.

Rear Cable Support

Cable support systems ensure smooth and consistent wire feed at any angle.

Swan Necks

Manufactured to the same specification as the OEM and armoured with a tough engineering polymer.



Ergonomic Handle

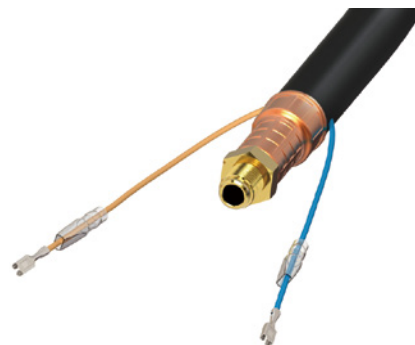
A patented screwless design combines the ultimate in balance, positioning and ergonomics. Torch handles disassemble in 5 seconds for rapid fault analysis.

Top and bottom handle soft grips ensure all day welder comfort.

Cable Systems

Lite cable sets offer a 30-40% weight saving at the equivalent performance levels.

The outer jacket is constructed from cross-linked polymers providing a tear proof outer with a burn threshold of 375°C.



Gun Plug Housing

Tough and damage resistant, housings and nuts are formed in robust glass-reinforced polymers encasing all conductive parts in accordance with IEC/EN60974-7.

A-LW Mig / Mag Torch Series

Ratings: 210 Amp to 340 Amp, Mixed Gas M21



Technical Data

Cooling Method

Rating: CO₂

Rating: Mixed Gas M21

Duty Cycle:

Wire Size:

PGA-LW255A Ergo

Air-Cooled

270A / 240A

240A / 210A

35% / 60%

0.8-1.2mm

PGA-LW355A Ergo

Air-Cooled

350A / 300A

320A / 270A

35% / 60%

1.0-1.6mm

PGA-LW455A Ergo

Air-Cooled

400A

340A

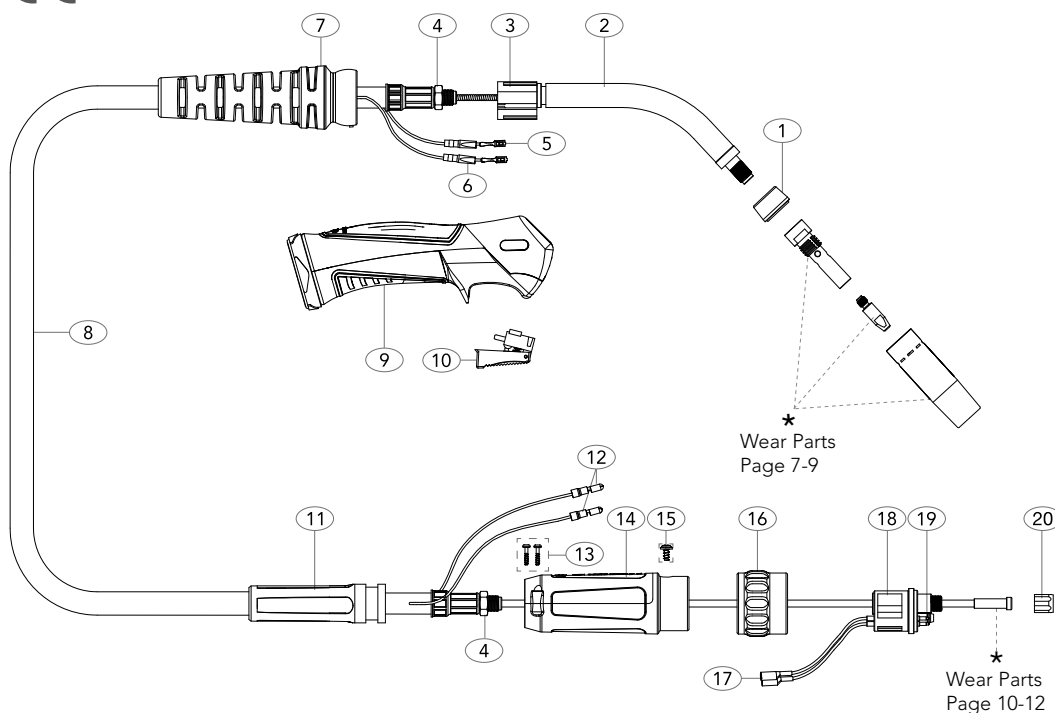
60%

1.0-2.4mm

Order Codes	3mt	PGA-LW255-30ER	PGA-LW355-30ER	PGA-LW455-30ER
	4mt	PGA-LW255-40ER	PGA-LW355-40ER	PGA-LW455-40ER
	5mt	PGA-LW255-50ER	PGA-LW355-50ER	PGA-LW455-50ER

PGA-LW255A Air-Cooled Mig Welding Torch

Rating: 270A CO₂ 240A mixed gas M21, EN60974-7 @ 35% duty cycle
240A CO₂ 210A mixed gas M21, EN60974-7 @ 60% duty cycle. 0.8-1.2mm wires



MODEL

Description	Part Number		
A-LW Ergo Torch Package	3mt PGA-LW255-30ER	4mt PGA-LW255-40ER	5mt PGA-LW255-50ER

SPARE PARTS

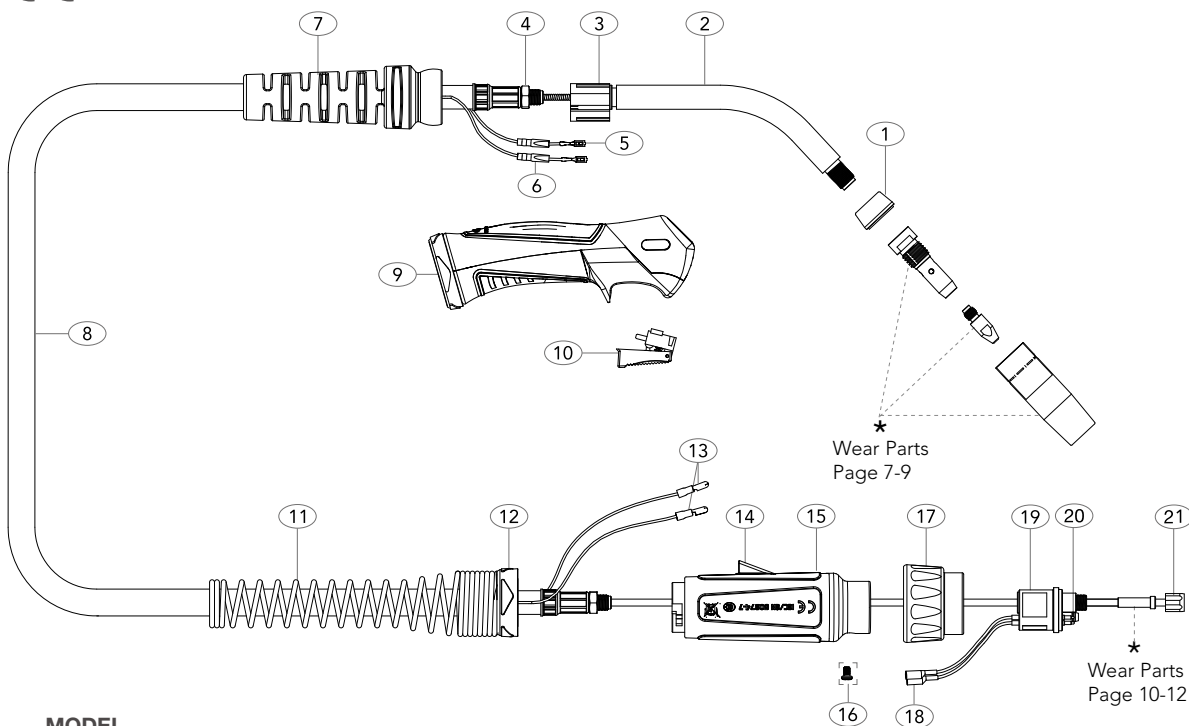
Part Number	Description	Part Number	Description
1 UA2552	Adaptor Piece	14 SC2578/S	Gun Plug Housing
2 UA2551	Swan Neck	15 UBL1541	Gun Plug Screw
3 UG1515	Handle Location Body	16 UC1519	Gun Plug Nut
4 UB1505	Lock Nut	17 UB1523	Gun Plug Terminal Female
5 UB1521	Cable Terminal	18 UC1528	Hybrid Gun Plug Body c/w Spring Pins
6 UB1521-C	Cable Terminal Cover	19 UB1524	Gun Plug 'O' Ring
7 UG8015/BK	Handle Cable Support c/w Ball Joint	20 UB1525	Liner Nut
8 LW255-30	Cable Assembly x 3mt		
LW255-40	Cable Assembly x 4mt		
LW255-50	Cable Assembly x 5mt		
9 UPG2514	Ergo Handle Kit c/w Lock Nut		
10 SWPG2516	Trigger		
11 UC2841	Cable Support		
12 UB1522	Cable Terminal Male		
13 SCSP1-1	Gun Plug Housing Screw		



All products conform to EN60974-7, **CE** and are RoHS2, REACH and WEEE compliant

PGA-LW355A Air-Cooled Mig Welding Torch

Rating: 350A CO₂ 320A mixed gas M21, EN60974-7 @ 35% duty cycle
300A CO₂ 270A mixed gas M21, EN60974-7 @ 60% duty cycle. 1.0-1.6mm wires

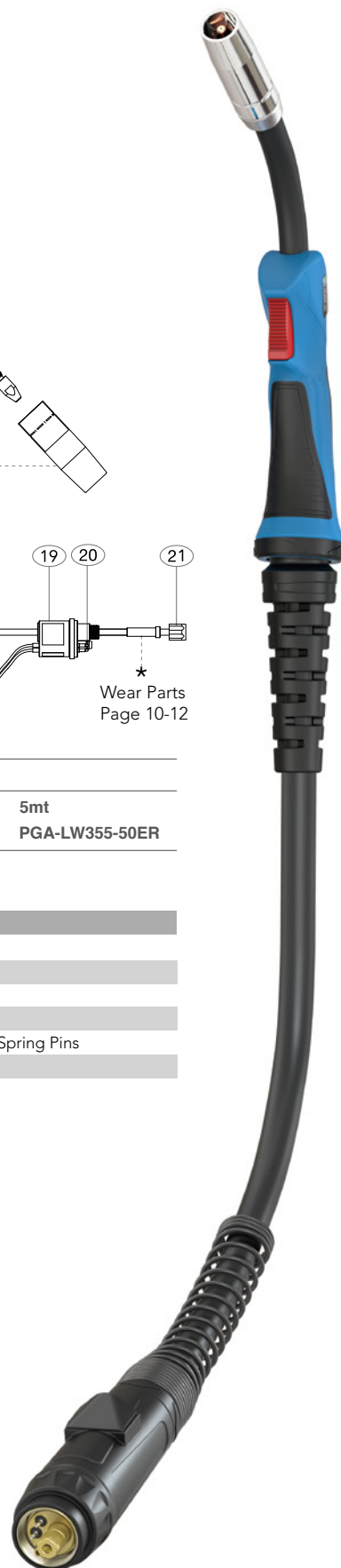


MODEL

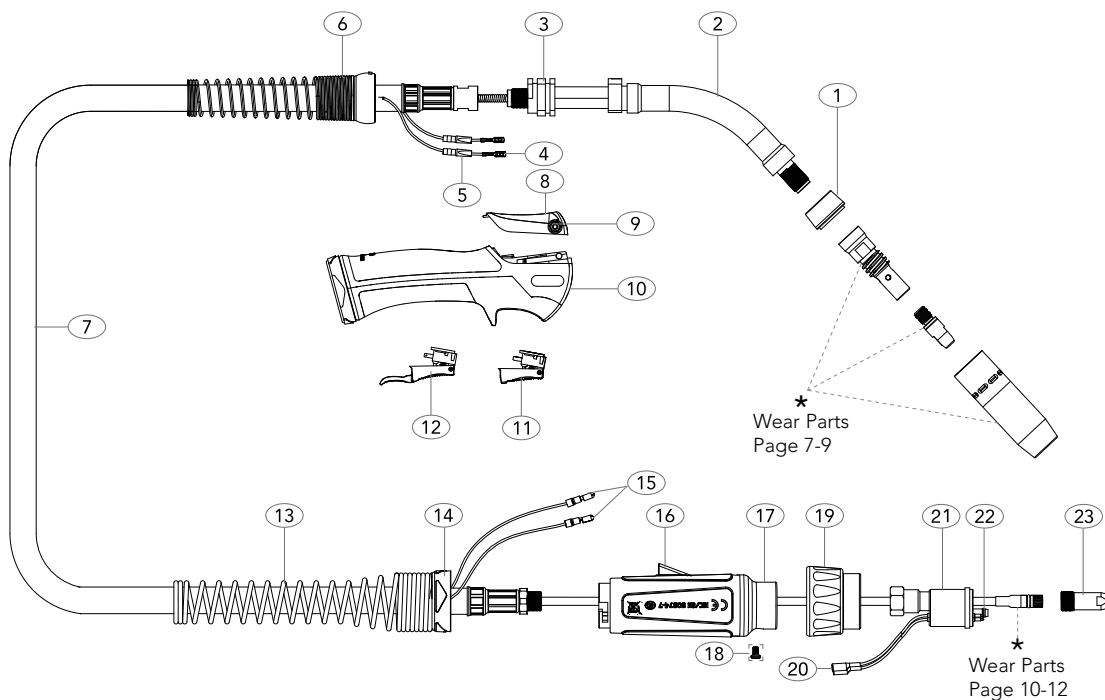
Description	Part Number		
A-LW Ergo Torch Package	3mt PGA-LW355-30ER	4mt PGA-LW355-40ER	5mt PGA-LW355-50ER

SPARE PARTS

Part Number	Description	Part Number	Description
1 UA3552	Adaptor Piece	15 UT5022	Large Housing
2 UA3553	Swan Neck	16 UBL1541	Gun Plug Screw
3 UG1515	Handle Location Body	17 UB1519	Gun Plug Nut
4 UB1505	Lock Nut	18 UB1523	Gun Plug Terminal Female
5 UB1521	Cable Terminal	19 UC1528	Hybrid Gun Plug Body c/w Spring Pins
6 UB1521-C	Cable Terminal Cover	20 UB1524	Gun Plug 'O' Ring
7 UG8016/BK	Handle Cable Support c/w Ball Joint	21 UB1525	Liner Nut
8 LW355-30	Cable Assembly x 3mt		
LW355-40	Cable Assembly x 4mt		
LW355-50	Cable Assembly x 5mt		
9 UPG2514	Ergo Handle Kit c/w Lock Nut		
10 SWPG2516	Trigger		
11 UC8026	Housing Spring (Short)		
12 UT8028	Spring Cable Support Nut		
13 UB1522	Cable Terminal Male		
14 SC8017	Large Housing Wire Cover		



All products conform to EN60974-7, and are RoHS2, REACH and WEEE compliant



MODEL

Description	Part Number		
A-LW Ergo Torch Package	3mt PGA-LW455-30ER	4mt PGA-LW455-40ER	5mt PGA-LW455-50ER

SPARE PARTS

Part Number	Description	Part Number	Description
1 UA4552	Adaptor Piece	14 UT8028	Spring Cable Support Nut
2 UA4553	Swan Neck	15 UB1522	Cable Terminal Male
3 LW1515	Handle Location Body	16 SC8017	Large Housing Wire Cover
4 UB1521	Cable Terminal	17 UT5022	Large Housing
5 UB1521-C	Cable Terminal Cover	18 UB1526	Gun Plug Screw
6 LW8018	Cable Support	19 UB1519	Gun Plug Nut
7 LW455-30	Cable Assembly x 3mt	20 UB1523	Gun Plug Terminal Female
LW455-40	Cable Assembly x 4mt	21 UA1528	Gun Plug Body c/w Spring Pins
LW455-50	Cable Assembly x 5mt	22 UB1524	Gun Plug 'O' Ring
8 UPM0	Top Housing With Grip	23 UA1525	Liner Nut
9 UDMNS	Screw Kit		
10 LW2515-KJ	Handle Assembly		
11 UGBH2516-R-M	Standard Trigger		
12 UGBH2516L-R-M	Extended Trigger		
13 UC8026	Housing Spring (Short)		



All products conform to EN60974-7, **CE** and are RoHS2, REACH and WEEE compliant

Wear Parts

BZL Nozzles

Part No. Description Bore Length Wall Material

PGA-LW155A

PGA-LW255A

PGA-LW305A

PGA-LW355A

PGA-LW455A



UA1530	Conical Nozzle	12.0	52mm	1.5mm	Copper	●	●	●	●	●
UA1530L	Conical Nozzle	12.0	54mm	1.5mm	Copper	●	●	●	●	●



UA2508	Conical Nozzle	16.0	70mm	2.0mm	Copper	●	●	●	●	●
UA2510	Conical Nozzle	14.0	67mm	2.0mm	Copper	●	●	●	●	●



UA3515	Conical Nozzle	18.0	72mm	2.0mm	Copper	●	●	●	●	●
UA3516	Conical Nozzle	16.0	69mm	2.0mm	Copper	●	●	●	●	●



UA4527	Cylindrical Nozzle	24.0	83mm	2.0mm	Copper	●	●	●	●	●
UA4528	Conical Nozzle	19.0	85mm	2.0mm	Copper	●	●	●	●	●
UA4529	Conical Nozzle	16.0	85mm	2.0mm	Copper	●	●	●	●	●

BZL Contact Tips

Part No. Description Material Wire Size mm-inch

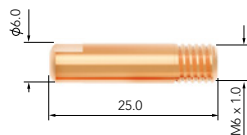
PGA-LW155A

PGA-LW255A

PGA-LW305A

PGA-LW355A

PGA-LW455A



UB1527-06	Contact Tip	Ecu	0.6-0.023	●	●	●	●	●
UB1527-08	Contact Tip	Ecu	0.8-0.030	●	●	●	●	●
UB1527-09	Contact Tip	Ecu	0.9-0.035	●	●	●	●	●
UB1527-10	Contact Tip	Ecu	1.0-0.040	●	●	●	●	●
UB1527-08A	Contact Tip	Ecu	0.8-0.030	●	●	●	●	●
UB1527-09A	Contact Tip	Ecu	0.9-0.035	●	●	●	●	●
UB1527-10A	Contact Tip	Ecu	1.0-0.040	●	●	●	●	●

● Standard wear part range ● Torch package standard wear part set-up

Wear Parts

BZL Contact Tips

Part No. Description Material Wire Size mm-inch

PGA-LW155A

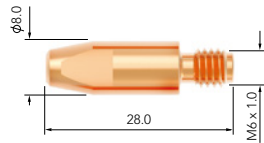
PGA-LW255A

PGA-LW305A

PGA-LW355A

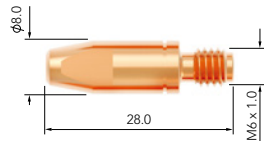
PGA-LW455A

M6 x 28



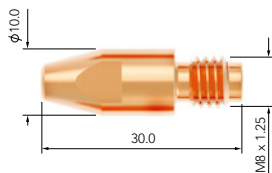
UB2504-08	Contact Tip	Ecu	0.8-0.030					
UB2504-09	Contact Tip	Ecu	0.9-0.035					
UB2504-10	Contact Tip	Ecu	1.0-0.040					
UB2504-12	Contact Tip	Ecu	1.2-0.045					
UB2504-08A	Contact Tip	Ecu	0.8-0.030					
UB2504-09A	Contact Tip	Ecu	0.9-0.035					
UB2504-10A	Contact Tip	Ecu	1.0-0.040					
UB2504-12A	Contact Tip	Ecu	1.2-0.045					

M6 x 28



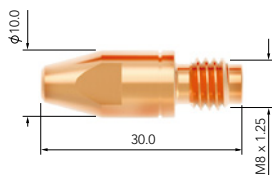
UB2505-08	Contact Tip	CuCrZr	0.8-0.030					
UB2505-09	Contact Tip	CuCrZr	0.9-0.035					
UB2505-10	Contact Tip	CuCrZr	1.0-0.040					
UB2505-12	Contact Tip	CuCrZr	1.2-0.045					

M8 x 30



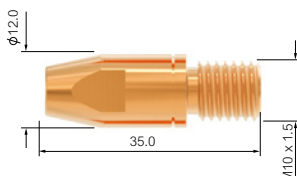
UB4014-08	Contact Tip	Ecu	0.8-0.030					
UB4014-09	Contact Tip	Ecu	0.9-0.035					
UB4014-10	Contact Tip	Ecu	1.0-0.040					
UB4014-12	Contact Tip	Ecu	1.2-0.045					
UB4014-14	Contact Tip	Ecu	1.4-0.055					
UB4014-16	Contact Tip	Ecu	1.6-0.063					
UB4014-10A	Contact Tip	Ecu	1.0-0.040					
UB4014-12A	Contact Tip	Ecu	1.2-0.045					
UB4014-16A	Contact Tip	Ecu	1.6-0.063					

M8 x 30



UB4015-08	Contact Tip	CuCrZr	0.8-0.030					
UB4015-09	Contact Tip	CuCrZr	0.9-0.035					
UB4015-10	Contact Tip	CuCrZr	1.0-0.040					
UB4015-12	Contact Tip	CuCrZr	1.2-0.045					
UB4015-14	Contact Tip	CuCrZr	1.4-0.055					
UB4015-16	Contact Tip	CuCrZr	1.6-0.063					

M10 x 35



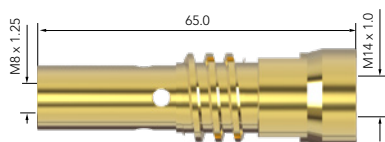
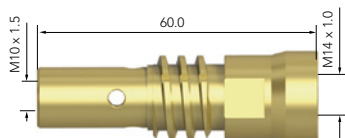
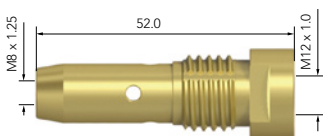
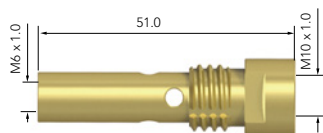
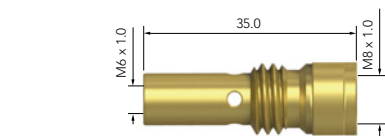
UB6015-10	Contact Tip	CuCrZr	1.0-0.040					
UB6015-12	Contact Tip	CuCrZr	1.2-0.045					
UB6015-14	Contact Tip	CuCrZr	1.4-0.055					
UB6015-16	Contact Tip	CuCrZr	1.6-0.063					
UB6015-20	Contact Tip	CuCrZr	2.0-0.080					
UB6015-24	Contact Tip	CuCrZr	2.4-0.095					

● Standard wear part range ● Torch package standard wear part set-up

Wear Parts

BZL Tip Adaptors

Part No.	Description	Material	PGA-LW155A	PGA-LW255A	PGA-LW305A	PGA-LW355A	PGA-LW455A
UA1506	Tip Adaptor	Brass	●	●	●	●	●
UA2506	Tip Adaptor	Brass	●	●	●	●	●
UA3506	Tip Adaptor	Brass	●	●	●	●	●
UA4506	Tip Adaptor	Brass	●	●	●	●	●
UA4536	Tip Adaptor M8	Brass	●	●	●	●	●



Wear Parts

BZL Liners

Part No. Length Description Nipple Wire Size mm

PGA-LW155A

PGA-LW255A

PGA-LW305A

PGA-LW355A

PGA-LW455A



UB1535-30	3.4mt	Steel Liner x 3mt	Moulded Nipple	0.6-0.9	● ● ● ● ●
UB1535-40	4.4mt	Steel Liner x 4mt	Moulded Nipple	0.6-0.9	● ● ● ● ●
UB1535-50	5.4mt	Steel Liner x 5mt	Moulded Nipple	0.6-0.9	● ● ● ● ●



UB1535-30B	3.4mt	Steel Liner x 3mt	Brass Nipple	0.6-0.9	● ● ● ● ●
UB1535-40B	4.4mt	Steel Liner x 4mt	Brass Nipple	0.6-0.9	● ● ● ● ●
UB1535-50B	5.4mt	Steel Liner x 5mt	Brass Nipple	0.6-0.9	● ● ● ● ●



UB2524-30	3.4mt	Steel Liner x 3mt	Moulded Nipple	1.0-1.2	● ● ● ● ●
UB2524-40	4.4mt	Steel Liner x 4mt	Moulded Nipple	1.0-1.2	● ● ● ● ●
UB2524-50	5.4mt	Steel Liner x 5mt	Moulded Nipple	1.0-1.2	● ● ● ● ●



UB2524-30B	3.4mt	Steel Liner x 3mt	Brass Nipple	1.0-1.2	● ● ● ● ●
UB2524-40B	4.4mt	Steel Liner x 4mt	Brass Nipple	1.0-1.2	● ● ● ● ●
UB2524-50B	5.4mt	Steel Liner x 5mt	Brass Nipple	1.0-1.2	● ● ● ● ●



UB3631-30	3.4mt	Steel Liner x 3mt	Moulded Nipple	1.6	● ● ● ● ●
UB3631-40	4.4mt	Steel Liner x 4mt	Moulded Nipple	1.6	● ● ● ● ●
UB3631-50	5.4mt	Steel Liner x 5mt	Moulded Nipple	1.6	● ● ● ● ●

● Standard wear part range ● Torch package standard wear part set-up

Wear Parts

BZL Liners

Part No. Length Description

Nipple

Wire Size
mm

PGA-LW155A

PGA-LW255A

PGA-LW305A

PGA-LW355A

PGA-LW455A



UB3631-30B	3.4mt	Steel Liner x 3mt	Brass Nipple	1.6	●	●	●	●	●
UB3631-40B	4.4mt	Steel Liner x 4mt	Brass Nipple	1.6	●	●	●	●	●
UB3631-50B	5.4mt	Steel Liner x 5mt	Brass Nipple	1.6	●	●	●	●	●



UB4531-30B	3.4mt	Steel Liner x 3mt	Brass Nipple	1.0-1.2	●	●	●	●	●
UB4531-40B	4.4mt	Steel Liner x 4mt	Brass Nipple	1.0-1.2	●	●	●	●	●
UB4531-50B	5.4mt	Steel Liner x 5mt	Brass Nipple	1.0-1.2	●	●	●	●	●



UB4532-30B	3.4mt	Steel Liner x 3mt	Brass Nipple	1.4-1.6	●	●	●	●	●
UB4532-40B	4.4mt	Steel Liner x 4mt	Brass Nipple	1.4-1.6	●	●	●	●	●
UB4532-50B	5.4mt	Steel Liner x 5mt	Brass Nipple	1.4-1.6	●	●	●	●	●



UB4533-30B	3.4mt	Steel Liner x 3mt	Brass Nipple	2.0-2.4	●	●	●	●	●
UB4533-40B	4.4mt	Steel Liner x 4mt	Brass Nipple	2.0-2.4	●	●	●	●	●
UB4533-50B	5.4mt	Steel Liner x 5mt	Brass Nipple	2.0-2.4	●	●	●	●	●



UB1536-30	3.6mt	Teflon Liner x 3mt	Teflon Brass Nipple	0.6-0.9	●	●	●	●	●
UB1536-40	4.6mt	Teflon Liner x 4mt	Teflon Brass Nipple	0.6-0.9	●	●	●	●	●
UB1536-50	5.6mt	Teflon Liner x 5mt	Teflon Brass Nipple	0.6-0.9	●	●	●	●	●
UNE1564	0.3mt	Optional Bronze Neck Liner	Brass Nipple	0.8-1.2	●	●	●	●	●

● Standard wear part range ● Torch package standard wear part set-up

Wear Parts

BZL Liners

Part No. Length Description

Nipple

Wire Size
mm

PGA-LW155A

PGA-LW255A

PGA-LW305A

PGA-LW355A

PGA-LW455A



UB2513-30	3.6mt	Teflon Liner x 3mt	Teflon Brass Nipple	1.0-1.2	●	●	●	●	●
UB2513-40	4.6mt	Teflon Liner x 4mt	Teflon Brass Nipple	1.0-1.2	●	●	●	●	●
UB2513-50	5.6mt	Teflon Liner x 5mt	Teflon Brass Nipple	1.0-1.2	●	●	●	●	●
UNE1564	0.3mt	Optional Bronze Neck Liner	Brass Nipple	0.8-1.2	●	●	●	●	●



UB3626-30	3.6mt	Teflon Liner x 3mt	Teflon Brass Nipple	1.2-1.6	●	●	●	●	●
UB3626-40	4.6mt	Teflon Liner x 4mt	Teflon Brass Nipple	1.2-1.6	●	●	●	●	●
UB3626-50	5.6mt	Teflon Liner x 5mt	Teflon Brass Nipple	1.2-1.6	●	●	●	●	●
UNE2564	0.3mt	Optional Bronze Neck Liner	Brass Nipple	1.2-1.6	●	●	●	●	●



UB1564-30	3.6mt	Polyamide Liner x 3mt, 4.0mm O/D	Brass Nipple	0.8-1.2	●	●	●	●	●
UB1564-40	4.6mt	Polyamide Liner x 4mt, 4.0mm O/D	Brass Nipple	0.8-1.2	●	●	●	●	●
UB1564-50	5.6mt	Polyamide Liner x 5mt, 4.0mm O/D	Brass Nipple	0.8-1.2	●	●	●	●	●



UB2564-30	3.6mt	Polyamide Liner x 3mt, 4.7mm O/D	Brass Nipple	1.2-1.6	●	●	●	●	●
UB2564-40	4.6mt	Polyamide Liner x 4mt, 4.7mm O/D	Brass Nipple	1.2-1.6	●	●	●	●	●
UB2564-50	5.6mt	Polyamide Liner x 5mt, 4.7mm O/D	Brass Nipple	1.2-1.6	●	●	●	●	●



UB3564-30	3.6mt	Polyamide Liner x 3mt, 4.7mm O/D	Brass Nipple	1.6-2.0	●	●	●	●	●
UB3564-40	4.6mt	Polyamide Liner x 4mt, 4.7mm O/D	Brass Nipple	1.6-2.0	●	●	●	●	●
UB3564-50	5.6mt	Polyamide Liner x 5mt, 4.7mm O/D	Brass Nipple	1.6-2.0	●	●	●	●	●

● Standard wear part range ● Torch package standard wear part set-up

Welding & Cutting Torch Technology

JINAN UNIARC WELDING TECHNOLOGY CO., LTD

13A Zhangjin Comprehensive Bonded Zone
33688, Jing Shi Dong Road
Jinan Area of China (Shandong) Pilot Free Trade Zone
Jinan 250102, P.R. China

Tel: +86 531 88239823

Website: www.uniarctorchology.com

Email: info@uniarctorchology.com

MPU006 / V.2022.08