



Product Catalogue

Machine Control
Digital Display Series



About Us

Uniarc is part of a group of companies specializing in the production of Welding and Cutting torches.

With over 40 years experience, the group is positioned as a global leader at the heart of the welding torch industry.

Originally established in the United Kingdom in the 1980's, the company is now a fully-fledged, vertically integrated Chinese product innovator and manufacturer.

Our customers span a full cross section of the industry, ranging from general distribution to leading global original equipment manufacturers.

Our products are used in a broad cross-section of industrial sectors ranging from auto body repair to ship building.

Whether you need a standard off the shelf product or a customized branded option with your own colours, logos and packaging we have a one stop solution for your requirements.

Our team are here to help, contact us today if you need anymore information.



find out more www.uniarctorchology.com

Contents

Features Focus	2
Range Overview	4
Digital Display Specification Information	
Handle and Modules Explained	6
Torch Package Configurator	7

Torch Model

DM240A	8
DM360A	9
DM240W	10
DM401W	11

Wear Parts

Nozzles	12
Contact Tips	12
Tip Adaptors	14
Diffusers	14
Liners	15

Machine Control

Digital Display Air-Cooled Series

Features Focus

The Uniarc Digital Display Torch series offers high tech control of the welding machine parameters by digitally interfacing all control features from the torch handle. The handle readout displays all welding and machine parameters in 'real time'.

Hanger Hook

Fitted as standard they encourage the operator to hang the torch off the ground where it is easy to locate.

Trigger System

Rapid field servicing is ensured by a simple "plug and play" system, switches can be exchanged in 5 seconds without the use of tools.

Triggers are micro switch controlled and available as standard or extended options.

Signalling

All digital signalling is sent from the handle through the switch leads in standard cable assemblies and gun plug body pins to the machine.

Knuckle Joint and Cable Support

Small movements of the handle and neck are possible independent of the cable assembly. A moulded polymer cable support increases flexibility and electrode support.



Spring Pins

Fitted with unbreakable spring loaded gun plug body pins.

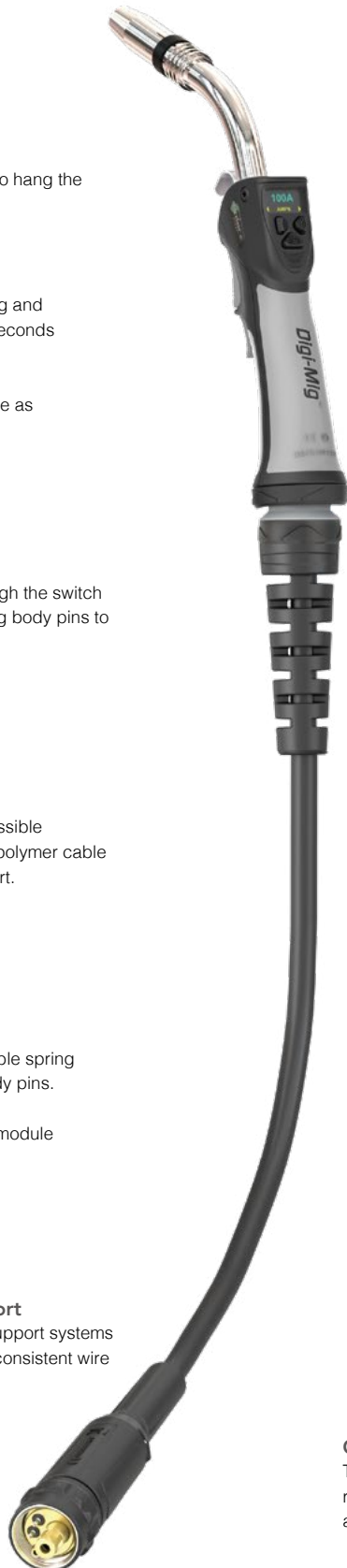
Pins carry all digital module switching signals.

Rear Cable Support

Extra length cable support systems ensure smooth and consistent wire feed at any angle.

Digital Signalling

Control module signals are sent to the machine via standard switch wires and gun body pins



Consumable parts

All wear and spare parts are manufactured to the same specification as the OEM and are fully interchangeable.

Digital Display Ergo Handle System

A patented screwless design disassembles in 5 seconds for rapid maintenance.

Top and bottom grips ensure all day welder comfort.



Air-Cooled Cable Systems

Cable assemblies offer outstanding flexibility and the highest heat and abrasion resistance of any known cable.

The outer jacket is constructed from cross-linked polymers providing a tear proof outer with a burn threshold of 375°C.



Gun Plug Housing

Tough and damage resistant, housings and nuts are formed in robust glass-reinforced polymers encasing all conductive parts in accordance with EN60974-7.

Machine Control Digital Display Liquid-Cooled Series

Features Focus

Hanger Hook

Fitted as standard they encourage the operator to hang the torch off the ground where it is easy to locate.

Trigger System

Rapid field servicing is ensured by a simple "plug and play" system, switches can be exchanged in 5 seconds without the use of tools.

Triggers are micro switch controlled and available as standard or extended options.

Knuckle Joint and Cable Support

Small movements of the handle and neck are possible independent of the cable assembly. A moulded polymer cable support increases flexibility and electrode support.



Spring Pins

Fitted with unbreakable spring loaded gun plug body pins.

Gun Plug Housing

Tough and damage resistant, housings and nuts are formed in robust glass-reinforced polymers encasing all conductive parts in accordance with EN60974-7.

Swan Necks

Manufactured to the same specification as the OEM.

Liquid-Cooled Cable Systems

Cable systems use high temperature-resistant rubber cables and are colour-coded for ease of identification.

Unique cable end geometries ensure leak free terminations.

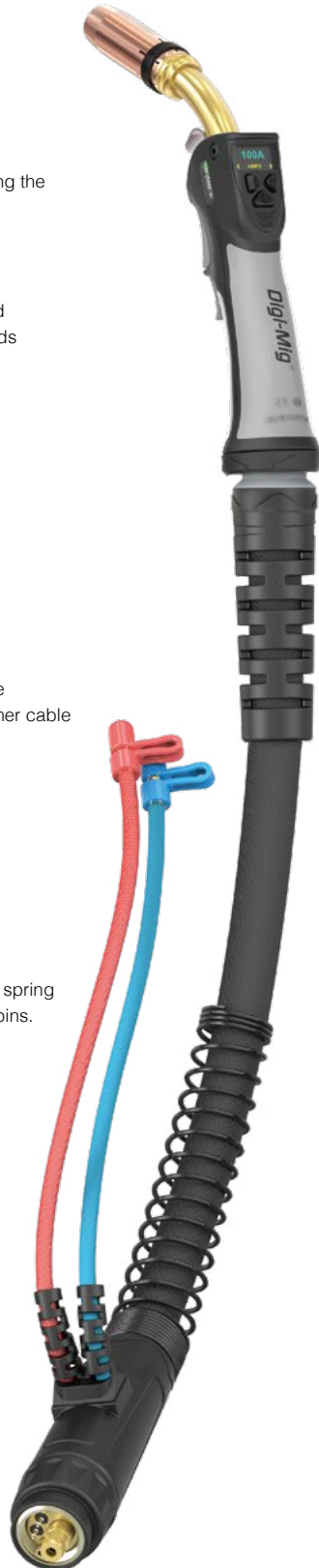


Rear Cable Support

Extra length cable support systems ensure smooth and consistent wire feed at any angle.

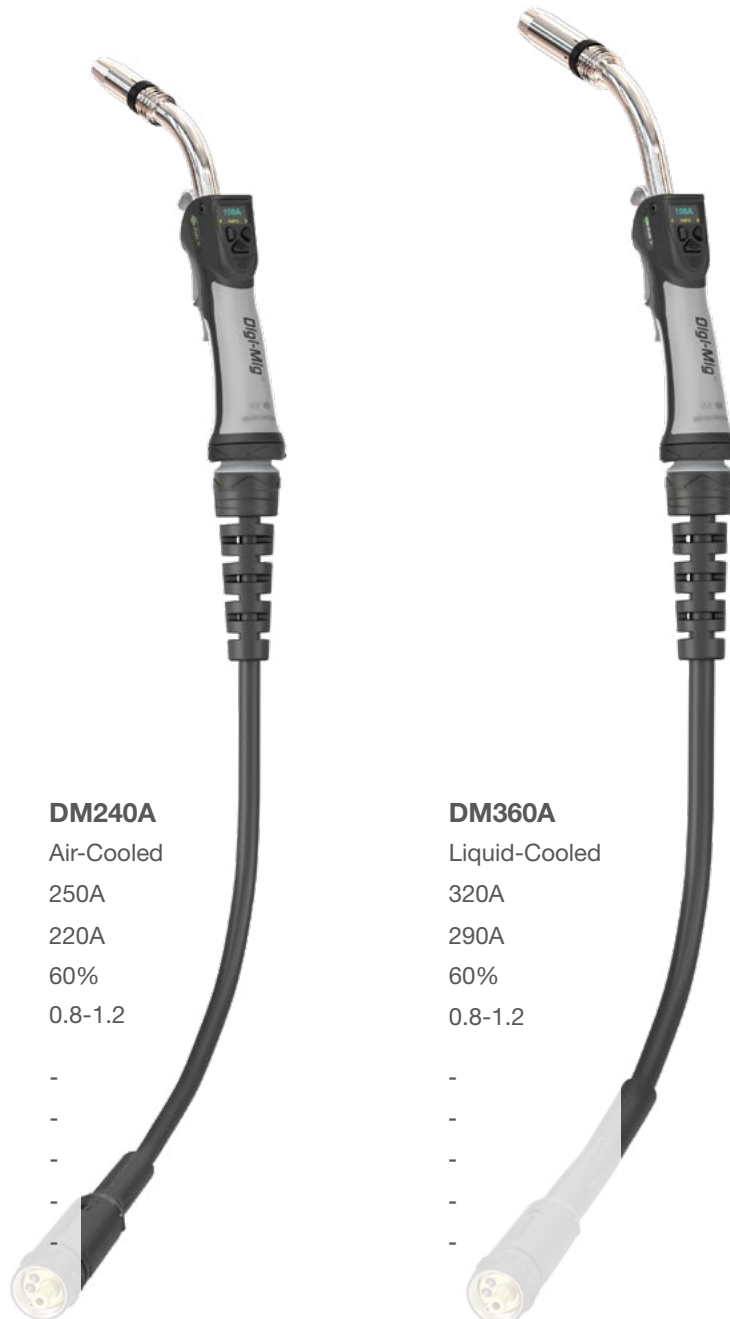
Water In/Out Supports

Fitted as standard to ensure delivery and flow rate of coolants.



Machine Control Digital Display Torch Range

Ratings: 220 Amp to 350 Amp, Mixed Gas M21



Technical Data

Cooling Method

Rating: CO₂

Rating: Mixed Gas M21

Duty Cycle:

Wire Size:

Minimum Water Flow

Minimum Water Inlet Pressure

Minimum Cooling Requirements

Maximum Water Inlet Pressure

Maximum Water Inlet Temperature

DM240A

Air-Cooled

250A

220A

60%

0.8-1.2

-

-

-

-

-

DM360A

Liquid-Cooled

320A

290A

60%

0.8-1.2

-

-

-

-

-

Meter

Order Codes	3mt	DM2400-DM4-MT1-30ER	DM3600-DM4-MT1-30ER
	4mt	DM2400-DM4-MT1-40ER	DM3600-DM4-MT1-40ER
	5mt	DM2400-DM4-MT1-50ER	DM3600-DM4-MT1-50ER

Machine Control

Digital Display Torch Range

Ratings: 220 Amp to 350 Amp, Mixed Gas M21

Technical Data

Cooling Method

Rating: CO₂

Rating: Mixed Gas M21

Duty Cycle:

Wire Size:

Minimum Water Flow

Minimum Water Inlet Pressure

Minimum Cooling Requirements

Maximum Water Inlet Pressure

Maximum Water Inlet Temperature

DM240W

Liquid-Cooled

300A

270A

100%

0.8-1.2

1.2 L/min

2.0 Bar

900W

5.0 Bar

50°C

DM401W

Liquid-Cooled

400A

350A

100%

0.8-1.2

1.2 L/min

2.0 Bar

1000W

5.0 Bar

50°C

Order Codes	Meter		
	3mt	DM2400W-DM4-MT1-30ER	DM4001W-DM4-MT1-30ER
	4mt	DM2400W-DM4-MT1-40ER	DM4001W-DM4-MT1-40ER
	5mt	DM2400W-DM4-MT1-50ER	DM4001W-DM4-MT1-50ER

Digital Display Torch Control

All control module signalling to the machine is sent via the trigger leads and gun plug body pins.

Digital signalling requires software systems integration in collaboration with equipment manufacturers.



Control Module
UNDM4

Function:

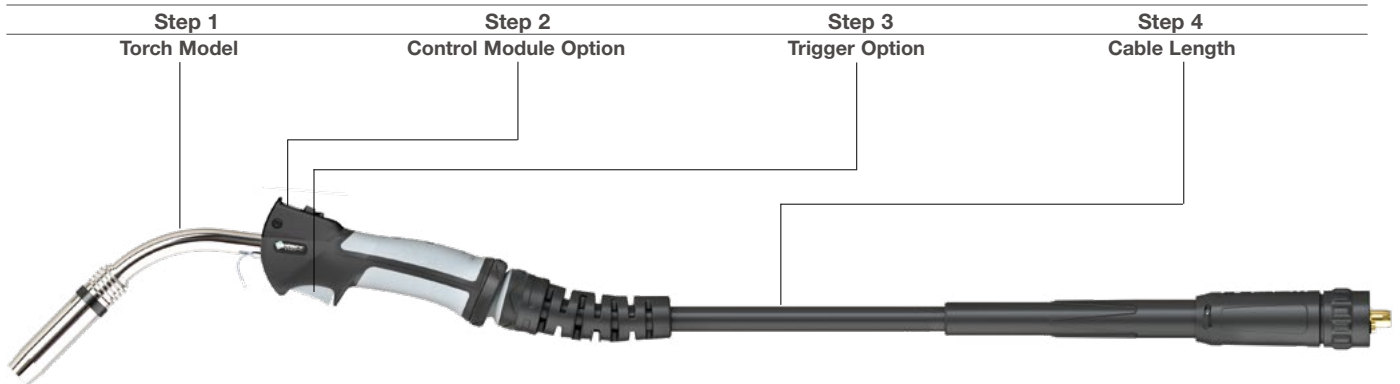
ON / OFF Switch,
On/Off Illumination,
Job Mode / Parameter Display,
Up Down Mouse Control

Wiring Method available on request please contact
info@uniarctorchology.com

Machine Control

Digital Display Torch Range

Torch Package Configurator



Ordering Information


Torch package part numbering is configured using the simple 4 stage system outlined below:

1. Select the correct model of torch
2. Select the control module required
3. Select the trigger type
4. Select the cable length required

Example: DM2400-DM4-MT1-30ER

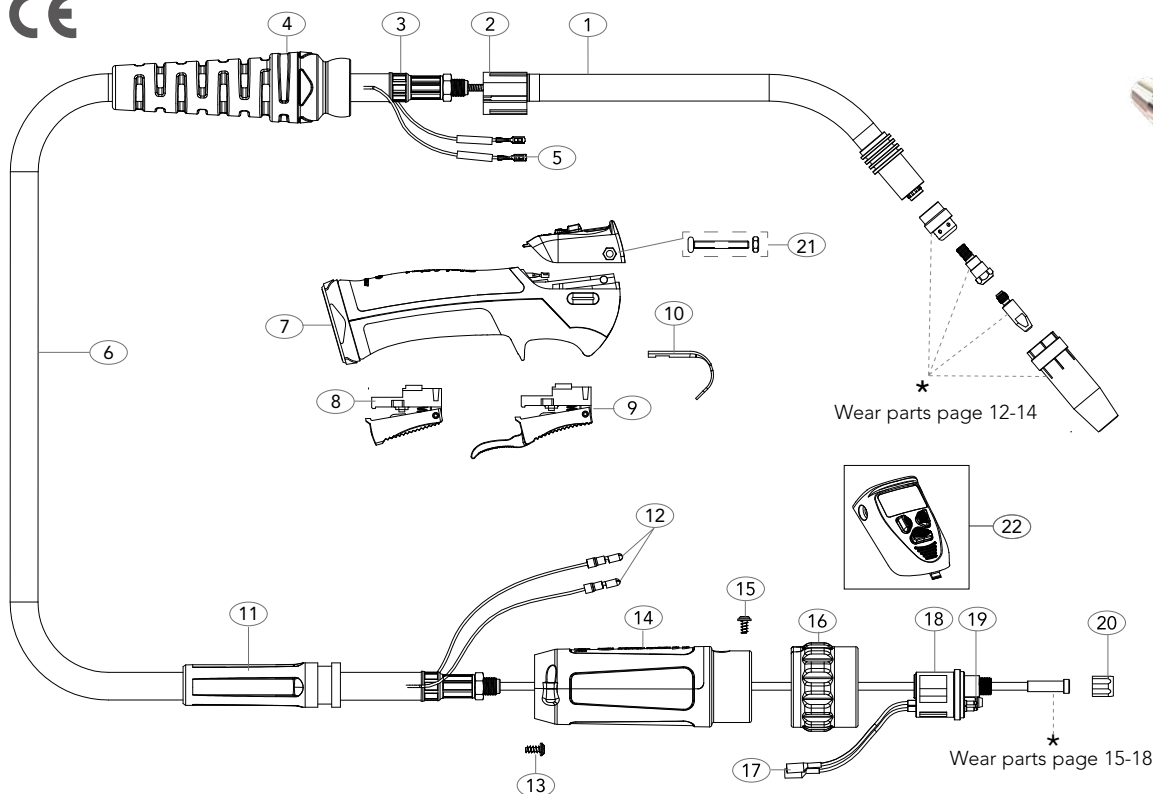
Digital Display 240A Air-Cooled Torch Package c/w digital display control and standard trigger x 3mt

Step 1 Torch Model		Step 2 Control Module Option		Step 3 Trigger Option		Step 4 Cable Length	
Part No.	Description	Part No.	Description	Part No.	Description	Part No.	Description
DM240A	DM240 Air-Cooled Package	MT1	Standard Trigger	30ER	Cable Assembly x 3mt		
DM360A	DM360 Air-Cooled Package	MT2	Extended Trigger	40ER	Cable Assembly x 4mt		
DM240W	DM240 Liquid-Cooled Package			50ER	Cable Assembly x 5mt		
DM401W	DM401 Liquid-Cooled Package						
Part No.	Description						
UNDM4	Digi-Mig Module Control						



Function
On / Off Switch
LED On / Off Illumination
Programme Select Switch
LED Display: Programme Reference
Job
Amps
Wire Speed
Arc Length
Up/Down Mouse Control

UNDM4



MODEL

Description	Part Number		
	3mt	4mt	5mt
Digital Display Torch Package	DM2400-DM4-MT1-30ER	DM2400-DM4-MT1-40ER	DM2400-DM4-MT1-50ER

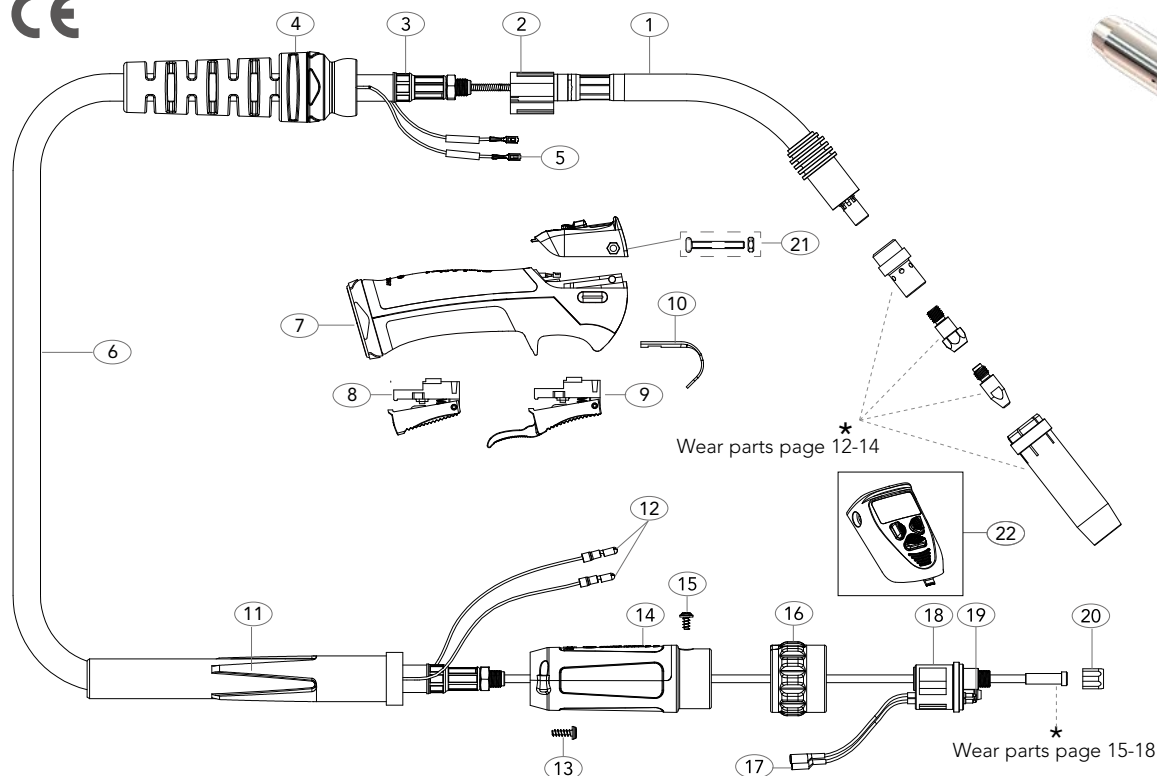
SPARE PARTS

Part Number	Description	Part Number	Description
1 UG2401	Swan Neck	16 UB1519/S	Gun Plug Nut
2 UG1515	Ergo Handle Location Body	17 UB1523	Gun Plug Terminal Female
3 UB1505	Lock Nut	18 UC1528	Hybrid Gun Plug Body c/w Spring Pins
4 UG8015	Handle Cable Support c/w Ball Joint	19 UB1524	Gun Plug 'O' Ring
5 UB1521	Cable Terminal	20 UB1525	Liner Nut
6 UB2603-30	Cable Assembly x 3mt	21 UDMNS	Screw Kit
UB2603-40	Cable Assembly x 4mt	22 UNDM4	Digital Display Module
UB2603-50	Cable Assembly x 5mt		
7 DM2514/KJ	Digital Handle Kit c/w wiring harness		
8 DMN2516M	Standard Trigger		
9 DMN2516LM	Extended Trigger		
10 UB2517	Hanger Hook (Optional Extra)		
11 UC2841	Cable Support		
12 UB1522	Cable Terminal Male		
13 SCSP1-1	Gun Plug Housing Screw		
14 SC2578/S	Gun Plug Housing		
15 UBL1541	Gun Plug Screw		

All products conform to EN60974-7, **CE** and are RoHS2, REACH and WEEE compliant

DM360A Machine Control Digital Display Air-Cooled Mig Welding Torch

Rating: 320A CO₂ 290A mixed gas M21, EN60974-7 @ 60% duty cycle. 0.8 to 1.2mm wires



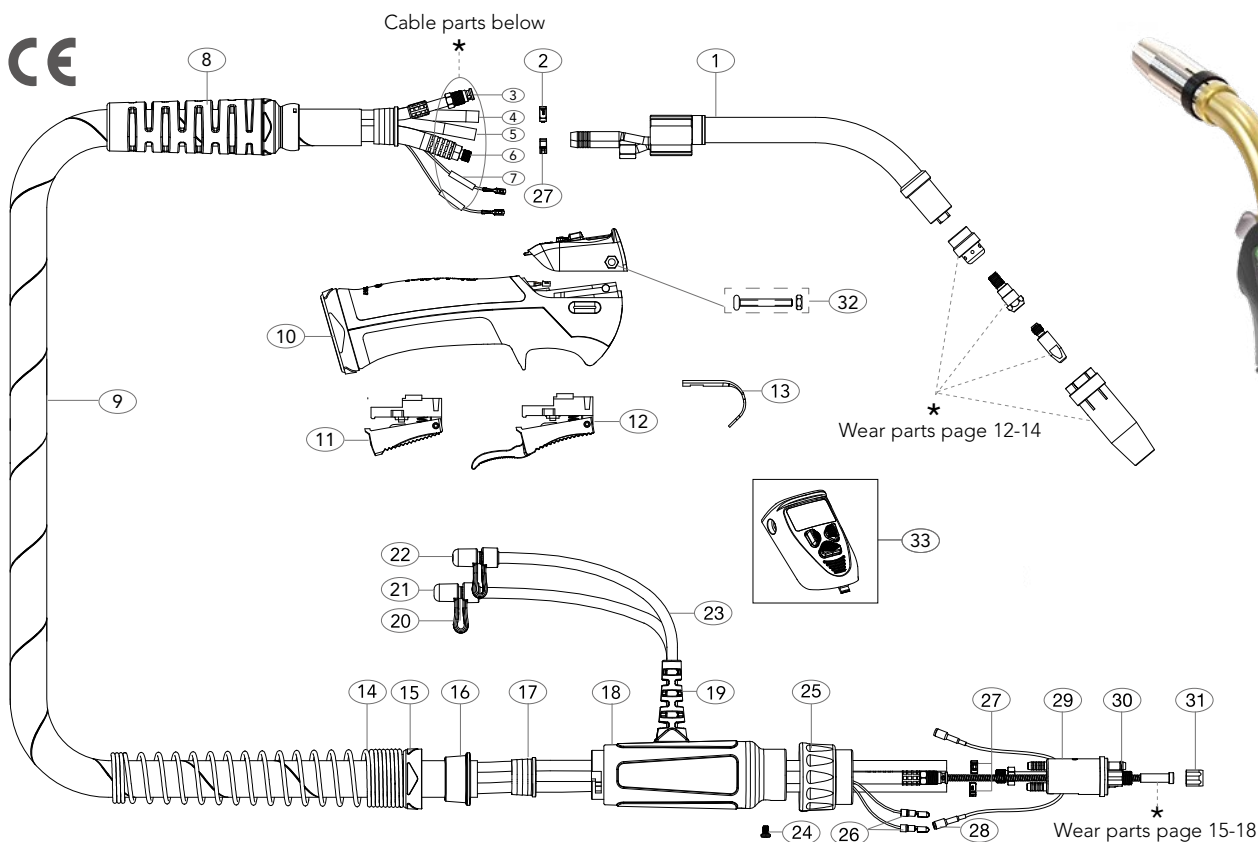
MODEL

Description	Part Number		
	3mt	4mt	5mt
Digital Display Torch Package	DM3600-DM4-MT1-30ER	DM3600-DM4-MT1-40ER	DM3600-DM4-MT1-50ER

SPARE PARTS

Part Number	Description	Part Number	Description
1 UG3603	Swan Neck	16 UC1519/S	Gun Plug Nut
2 UG1515	Ergo Handle Location Body	17 UB1523	Gun Plug Terminal Female
3 UB1505	Lock Nut	18 UC1528	Hybrid Gun Plug Body c/w Spring Pins
4 UG8016	Handle Cable Support c/w Ball Joint	19 UB1524	Gun Plug 'O' Ring
5 UB1521	Cable Terminal	20 UB1525	Liner Nut
6 UB3609-30	Cable Assembly x 3mt	21 UDMNS	Screw Kit
UB3609-40	Cable Assembly x 4mt	22 UNDM4	Digital Display Module
UB3609-50	Cable Assembly x 5mt		
7 DM2514/KJ	Digital Handle Kit c/w wiring harness		
8 DMN2516M	Standard Trigger		
9 DMN2516LM	Extended Trigger		
10 UB2517	Hanger Hook (Optional Extra)		
11 UPA3541	Cable Support		
12 UB1522	Cable Terminal Male		
13 SCSP1-1	Gun Plug Housing Screw		
14 SC2578/L	Gun Plug Housing		
15 UBL1541	Gun Plug Screw		

All products conform to EN60974-7, and are RoHS2, REACH and WEEE compliant



MODEL

Description	Part Number		
	3mt	4mt	5mt
Digital Display Torch Package	DM2400W-DM4-MT1-30ER	DM2400W-DM4-MT1-40ER	DM2400W-DM4-MT1-50ER

SPARE PARTS

Part Number	Description	Part Number	Description
1 UG2409	Swan Neck	27 15400023	Water Hose Clamp 10.0mm
2 15400020	Hose Clamp 8.7mm	28 UB1523	Gun Plug Terminal Female
8 UG3208	Handle Cable Support c/w Ball Joint	29 UB5098	Gun Plug Body c/w Spring Pins
9 UG4006C-30	Cable Assembly x 3mt	30 UB1524	Gun Plug 'O' Ring
UG4006C-40	Cable Assembly x 4mt	31 UB1525	Liner Nut
UG4006C-50	Cable Assembly x 5mt	32 UDMNS	Screw Kit
10 DM2514/KJ	Digital Handle Kit c/w wiring harness	33 UNDM4	Digital Display Module
11 DMN2516M	Standard Trigger		
12 DMN2516LM	Extended Trigger		
13 UB2517	Hanger Hook (Optional Extra)		
14 UC8027	Housing Spring		
15 UT8028	Spring Cable Support Nut		
16 UT8009	Canvas Cover Clamp		
17 UG8010	Canvas Cover Retainer Small		
18 UT5022	Large Housing		
19 USLH1820-S	Inlet/Outlet Hose Support		
20 UB5023A	Water Hose Nipple		
21 UBD-80320	Red Cap Stopper		
22 UBD-80310	Blue Cap Stopper		
23 UB5017	Water Outlet Hose		
24 UB1526	Gun Plug Screw		
25 UB1519/S	Gun Plug Nut		
26 UB1522	Cable Terminal Male		

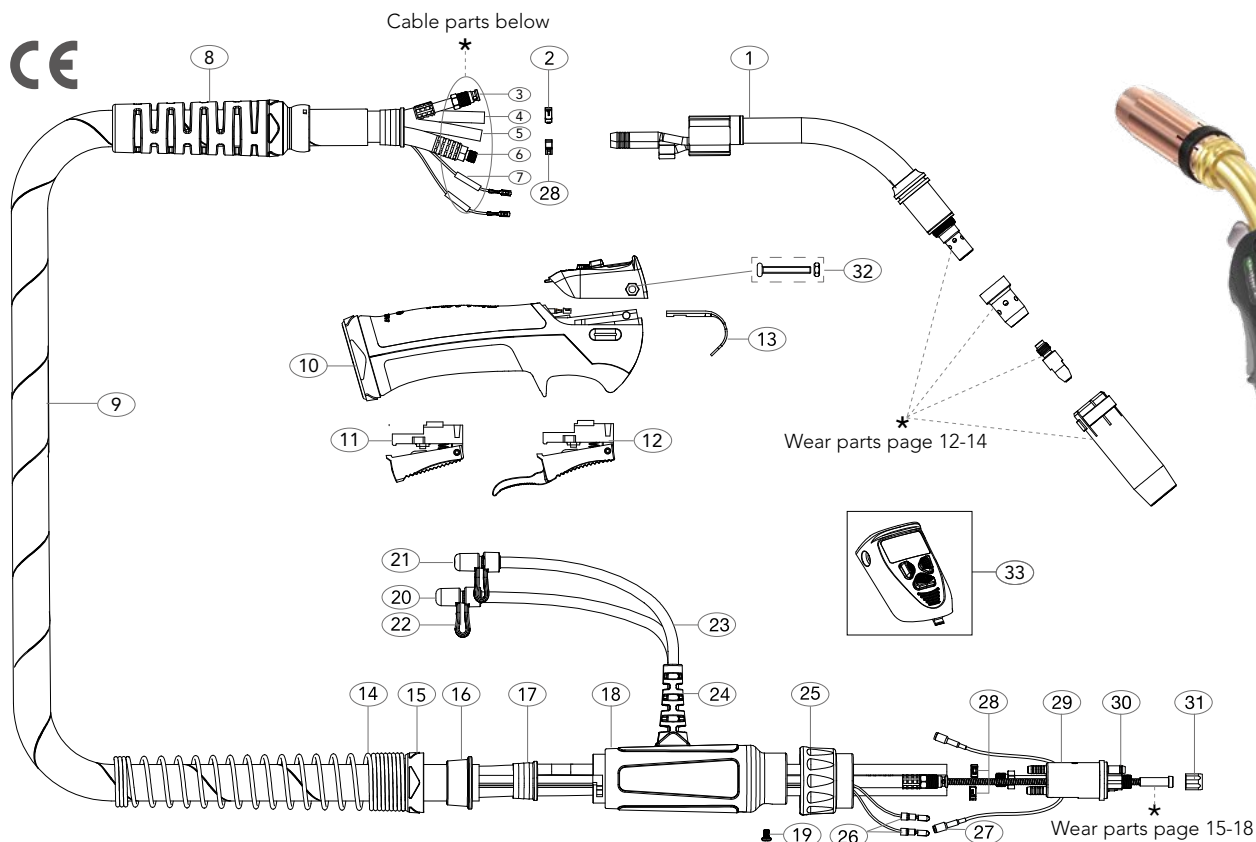
CABLE PARTS

Part Number	Description	3mt	4mt	5mt
3	Outer Liner Assembly	UC5008-30	UC5008-40	UC5008-50
4	Gas Hose Assembly	UB5013-30	UB5013-40	UB5013-50
5	Water Inlet Hose Assembly	UB5012-30	UB5012-40	UB5012-50
6	Power Cable Assembly	UB4015-30	UB4015-40	UB4015-50
7	Switch Lead Assembly	UB5010M-30	UB5010M-40	UB5010M-50

All products conform to EN60974-7, CE and are RoHS2, REACH and WEEE compliant

DM401W Machine Control Digital Display Liquid-Cooled Mig Welding Torch

Rating: 400A CO₂ 350A mixed gas M21, EN60974-7 @ 100% duty cycle. 0.8 to 1.2mm wires



MODEL

Description	Part Number		
	3mt	4mt	5mt
Digital Display Torch Package	DM4001W-DM4-MT1-30ER	DM4001W-DM4-MT1-40ER	DM4001W-DM4-MT1-50ER

SPARE PARTS

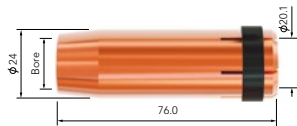
Part Number	Description	Part Number	Description
1 UG4011	Swan Neck	27 UB1523	Gun Plug Terminal Female
2 15400020	Hose Clamp 8.7mm	28 15400023	Water Hose Clamp 10.0mm
8 UG3208	Handle Cable Support c/w Ball Joint	29 UB5098	Gun Plug Body c/w Spring Pins
9 UG4006C-30	Cable Assembly x 3mt	30 UB1524	Gun Plug 'O' Ring
UG4006C-40	Cable Assembly x 4mt	31 UB1525	Liner Nut
UG4006C-50	Cable Assembly x 5mt	32 UDMNS	Screw Kit
10 DM2514/KJ	Digital Handle Kit c/w wiring harness	33 UNDM4	Digital Display Module
11 DMN2516M	Standard Trigger		
12 DMN2516LM	Extended Trigger		
13 UB2517	Hanger Hook (Optional Extra)		
14 UC8027	Housing Spring		
15 UT8028	Spring Cable Support Nut		
16 UT8009	Canvas Cover Clamp		
17 UG8010	Canvas Cover Retainer Small		
18 UT5022	Large Housing		
19 UB1526	Gun Plug Screw		
20 UBD-80310	Blue Cap Stopper		
21 UBD-80320	Red Cap Stopper		
22 UB5023A	Water Hose Nipple		
23 UB5017	Water Outlet Hose		
24 USLH1820-S	Inlet/Outlet Hose Support		
25 UB1519/S	Gun Plug Nut		
26 UB1522	Cable Terminal Male		

CABLE PARTS

Part Number	Description	3mt	4mt	5mt
3	Outer Liner Assembly	UC5008-30	UC5008-40	UC5008-50
4	Gas Hose Assembly	UB5013-30	UB5013-40	UB5013-50
5	Water Inlet Hose Assembly	UB5012-30	UB5012-40	UB5012-50
6	Power Cable Assembly	UB4015-30	UB4015-40	UB4015-50
7	Switch Lead Assembly	UB5010M-30	UB5010M-40	UB5010M-50

All products conform to EN60974-7, CE and are RoHS2, REACH and WEEE compliant

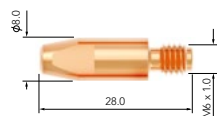
Wear Parts



Nozzles

Part No.	Description	Bore	Wall	Material	DM240A	DM360A	DM240W	DM401W
UB2415	Cylindrical Nozzle	17.2	1.4mm	Copper	●	●	●	●
UB2416	Conical Nozzle	12.6	1.4mm	Copper	●	●	●	●
UB2417	Tapered Nozzle	10.0	1.4mm	Copper	●	●	●	●
UB3615	Cylindrical Nozzle	19.0	2.25mm	Copper	●	●	●	●
UB3616	Conical Nozzle	16.1	2.25mm	Copper	●	●	●	●
UB3617	Tapered Nozzle	12.0	2.25mm	Copper	●	●	●	●
UB5027	Cylindrical Nozzle	19.0	2.5mm	Copper	●	●	●	●
UB5028	Conical Nozzle	16.0	2.5mm	Copper	●	●	●	●
UB5028HD	Conical Nozzle	16.0	3.2mm	Copper	●	●	●	●
UB5029	Tapered Nozzle	14.0	2.5mm	Copper	●	●	●	●

Wear Parts



Contact Tips

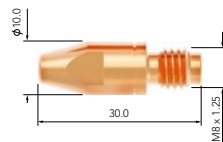
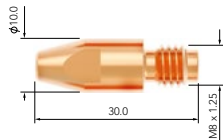
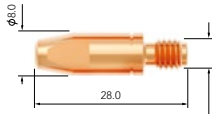
Part No.	Description	Material	Wire Size mm-inch	DM240A	DM360A	DM240W	DM401W
M6 x 28							
UB2504-06	Contact Tip	Ecu	0.6-0.023	●	●	●	●
UB2504-08	Contact Tip	Ecu	0.8-0.030	●	●	●	●
UB2504-09	Contact Tip	Ecu	0.9-0.035	●	●	●	●
UB2504-10	Contact Tip	Ecu	1.0-0.040	●	●	●	●
UB2504-12	Contact Tip	Ecu	1.2-0.045	●	●	●	●
UB2504-14	Contact Tip	Ecu	1.4-0.055	●	●	●	●
UB2504-16	Contact Tip	Ecu	1.6-1/16"	●	●	●	●
UB2504-08A	Contact Tip	Ecu	0.8-0.030	●	●	●	●
UB2504-09A	Contact Tip	Ecu	0.9-0.035	●	●	●	●
UB2504-10A	Contact Tip	Ecu	1.0-0.040	●	●	●	●
UB2504-12A	Contact Tip	Ecu	1.2-0.045	●	●	●	●
UB2504-16A	Contact Tip	Ecu	1.6-1/16"	●	●	●	●

● Standard wear part range ● Torch package standard wear part set-up

Wear Parts

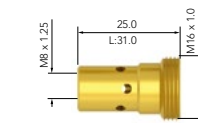
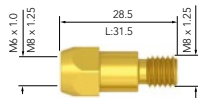
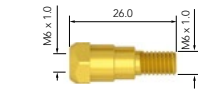
Contact Tips

Part No.	Description	Material	Wire Size mm-inch	DM240A	DM360A	DM240W	DM401W
M6 x 28							
UB2505-08	Contact Tip	CuCrZr	0.8-0.030	●	●	●	●
UB2505-09	Contact Tip	CuCrZr	0.9-0.035	●	●	●	●
UB2505-10	Contact Tip	CuCrZr	1.0-0.040	●	●	●	●
UB2505-12	Contact Tip	CuCrZr	1.2-0.045	●	●	●	●
UB2505-16	Contact Tip	CuCrZr	1.6-1/16"	●	●	●	●
UB2505-10A	Contact Tip	CuCrZr	1.0-0.040	●	●	●	●
UB2505-12A	Contact Tip	CuCrZr	1.2-0.045	●	●	●	●
UB2505-16A	Contact Tip	CuCrZr	1.6-1/16"	●	●	●	●
M8 x 30							
UB4014-08	Contact Tip	Ecu	0.8-0.030	●	●	●	●
UB4014-09	Contact Tip	Ecu	0.9-0.035	●	●	●	●
UB4014-10	Contact Tip	Ecu	1.0-0.040	●	●	●	●
UB4014-12	Contact Tip	Ecu	1.2-0.045	●	●	●	●
UB4014-14	Contact Tip	Ecu	1.4-0.055	●	●	●	●
UB4014-16	Contact Tip	Ecu	1.6-1/16"	●	●	●	●
UB4014-20	Contact Tip	Ecu	2.0-5/64"	●	●	●	●
UB4014-24	Contact Tip	Ecu	2.4-3/32"	●	●	●	●
UB4014-10A	Contact Tip	Ecu	1.0-0.040	●	●	●	●
UB4014-12A	Contact Tip	Ecu	1.2-0.045	●	●	●	●
UB4014-16A	Contact Tip	Ecu	1.6-1/16"	●	●	●	●
M8 x 30							
UB4015-08	Contact Tip	CuCrZr	0.8-0.030	●	●	●	●
UB4015-09	Contact Tip	CuCrZr	0.9-0.035	●	●	●	●
UB4015-10	Contact Tip	CuCrZr	1.0-0.040	●	●	●	●
UB4015-12	Contact Tip	CuCrZr	1.2-0.045	●	●	●	●
UB4015-13	Contact Tip	CuCrZr	1.3-0.052	●	●	●	●
UB4015-14	Contact Tip	CuCrZr	1.4-0.055	●	●	●	●
UB4015-16	Contact Tip	CuCrZr	1.6-1/16"	●	●	●	●
UB4015-20	Contact Tip	CuCrZr	2.0-5/64"	●	●	●	●
UB4015-24	Contact Tip	CuCrZr	2.4-3/32"	●	●	●	●
UB4015-10A	Contact Tip	CuCrZr	1.0-0.040	●	●	●	●
UB4015-12A	Contact Tip	CuCrZr	1.2-0.045	●	●	●	●
UB4015-16A	Contact Tip	CuCrZr	1.6-1/16"	●	●	●	●



● Standard wear part range ● Torch package standard wear part set-up

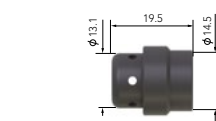
Wear Parts



Tip Adaptors

Part No.	Description	Material	DM240A	DM360A	DM240W	DM401W
UB2412	Tip Adaptor	Brass	●	●	●	●
UB3612	Tip Adaptor 28.5mm M6	Brass	●	●	●	●
UB3613	Tip Adaptor 31.5mm M6	Brass	●	●	●	●
UB3614	Tip Adaptor 28.5mm M8	Brass	●	●	●	●
UB5001	Tip Adaptor 25mm M8	Brass	●	●	●	●
UB5001C	Tip Adaptor 25mm M8	CuCrZr	●	●	●	●
UB5001L	Tip Adaptor Long	Brass	●	●	●	●

Wear Parts








Diffusers

Part No.	Description	Colour	Material	DM240A	DM360A	DM240W	DM401W
UB2405B	Diffuser	Black	DMC3	●	●	●	●
UB2405C	Diffuser	White	Ceramic	●	●	●	●
UB2405W	Diffuser	White	DMC3	●	●	●	●
UB2405S	Diffuser	Red	Silicon	●	●	●	●
UB3605B	Diffuser	Black	DMC3	●	●	●	●
UB3605C	Diffuser	White	Ceramic	●	●	●	●
UB3605H	Diffuser, High Temperature	White	HPP	●	●	●	●
UB3605W	Diffuser	White	DMC3	●	●	●	●
UB5005B	Diffuser	Black	DMC3	●	●	●	●
UB5005C	Diffuser	White	Ceramic	●	●	●	●
UB5005H	Diffuser, High Temperature	Black	HPP	●	●	●	●
UB5005W	Diffuser	White	DMC3	●	●	●	●

● Standard wear part range ● Torch package standard wear part set-up

Wear Parts

Liners

Part No.	Length	Description	Nipple	Wire Size mm-inch	DM240A	DM360A	DM240W	DM40TW
								
UB1535-30	3.4mt	Steel Liner x 3mt	Moulded Nipple	0.6-0.9	●	●	●	●
UB1535-40	4.4mt	Steel Liner x 4mt	Moulded Nipple	0.6-0.9	●	●	●	●
UB1535-50	5.4mt	Steel Liner x 5mt	Moulded Nipple	0.6-0.9	●	●	●	●
								
UB1535-30B	3.4mt	Steel Liner x 3mt	Brass Nipple	0.6-0.9	●	●	●	●
UB1535-40B	4.4mt	Steel Liner x 4mt	Brass Nipple	0.6-0.9	●	●	●	●
UB1535-50B	5.4mt	Steel Liner x 5mt	Brass Nipple	0.6-0.9	●	●	●	●
								
UB1536-30	3.6mt	Teflon Liner x 3mt	Brass Nipple	0.6-0.9	●	●	●	●
UB1536-40	4.6mt	Teflon Liner x 4mt	Brass Nipple	0.6-0.9	●	●	●	●
UB1536-50	5.6mt	Teflon Liner x 5mt	Brass Nipple	0.6-0.9	●	●	●	●
UNE1564	0.3mt	Optional Bronze Neck Liner	Brass Nipple	0.8-1.2	●	●	●	●
								
UB1564-30	3.6mt	Polyamide Liner X 3mt,4.0mm OD	Brass Nipple	0.8-1.2	●	●	●	●
UB1564-40	4.6mt	Polyamide Liner X 4mt,4.0mm OD	Brass Nipple	0.8-1.2	●	●	●	●
UB1564-50	5.6mt	Polyamide Liner X 5mt,4.0mm OD	Brass Nipple	0.8-1.2	●	●	●	●
								
UB2524-30	3.4mt	Steel Liner x 3mt	Moulded Nipple	1.0-1.2	●	●	●	●
UB2524-40	4.4mt	Steel Liner x 4mt	Moulded Nipple	1.0-1.2	●	●	●	●
UB2524-50	5.4mt	Steel Liner x 5mt	Moulded Nipple	1.0-1.2	●	●	●	●

● Standard wear part range ● Torch package standard wear part set-up

Wear Parts





Liners

Part No.	Length	Description	Nipple	Wire Size mm-inch	DM240A	DM360A	DM240W	DM40TW
								
UB2524-30B	3.4mt	Steel Liner x 3mt	Brass Nipple	1.0-1.2	●	●	●	●
UB2524-40B	4.4mt	Steel Liner x 4mt	Brass Nipple	1.0-1.2	●	●	●	●
UB2524-50B	5.4mt	Steel Liner x 5mt	Brass Nipple	1.0-1.2	●	●	●	●
								
UB2513-30	3.6mt	Teflon Liner x 3mt	Teflon Brass Nipple	1.0-1.2	●	●	●	●
UB2513-40	4.6mt	Teflon Liner x 4mt	Teflon Brass Nipple	1.0-1.2	●	●	●	●
UB2513-50	5.6mt	Teflon Liner x 5mt	Teflon Brass Nipple	1.0-1.2	●	●	●	●
UNE1564	0.3mt	Optional Bronze Neck Liner	Brass Nipple	0.8-1.2	●	●	●	●
								
UB2564-30	3.6mt	Polyamide Liner x 3mt, 4.7mm O/D	Brass Nipple	1.2-1.6	●	●	●	●
UB2564-40	4.6mt	Polyamide Liner x 4mt, 4.7mm O/D	Brass Nipple	1.2-1.6	●	●	●	●
UB2564-50	5.6mt	Polyamide Liner x 5mt, 4.7mm O/D	Brass Nipple	1.2-1.6	●	●	●	●
								
UB3564-30	3.6mt	Polyamide Liner x 3mt, 4.7mm O/D	Brass Nipple	1.6-2.0	●	●	●	●
UB3564-40	4.6mt	Polyamide Liner x 4mt, 4.7mm O/D	Brass Nipple	1.6-2.0	●	●	●	●
UB3564-50	5.6mt	Polyamide Liner x 5mt, 4.7mm O/D	Brass Nipple	1.6-2.0	●	●	●	●

● Standard wear part range ● Torch package standard wear part set-up

Wear Parts




Liners

Part No.	Length	Description	Nipple	Wire Size mm-inch	DM240A	DM360A	DM240W	DM40TW
								
UB3631-30	3.4mt	Steel Liner x 3mt	Moulded Nipple	1.6	●	●	●	●
UB3631-40	4.4mt	Steel Liner x 4mt	Moulded Nipple	1.6	●	●	●	●
UB3631-50	5.4mt	Steel Liner x 5mt	Moulded Nipple	1.6	●	●	●	●
								
UB3631-30B	3.4mt	Steel Liner x 3mt	Brass Nipple	1.6	●	●	●	●
UB3631-40B	4.4mt	Steel Liner x 4mt	Brass Nipple	1.6	●	●	●	●
UB3631-50B	5.4mt	Steel Liner x 5mt	Brass Nipple	1.6	●	●	●	●
								
UB3626-30	3.6mt	Teflon Liner x 3mt	Teflon Brass Nipple	1.2-1.6	●	●	●	●
UB3626-40	4.6mt	Teflon Liner x 4mt	Teflon Brass Nipple	1.2-1.6	●	●	●	●
UB3626-50	5.6mt	Teflon Liner x 5mt	Teflon Brass Nipple	1.2-1.6	●	●	●	●
UNE2564	0.3mt	Optional Bronze Neck Liner	Brass Nipple	1.2-1.6	●	●	●	●
								
UB4631-30B	3.5mt	Steel Liner x 3mt	Brass Nipple	2.0-2.4	●	●	●	●
UB4631-40B	4.5mt	Steel Liner x 4mt	Brass Nipple	2.0-2.4	●	●	●	●
UB4631-50B	5.5mt	Steel Liner x 5mt	Brass Nipple	2.0-2.4	●	●	●	●

● Standard wear part range ● Torch package standard wear part set-up

Wear Parts

Liners

Part No.	Length	Description	Nipple	Wire Size mm-inch	DM240A	DM360A	DM240W	DM40TW
								
UB5033-30	3.5mt	Steel Liner x 3mt	Moulded Nipple	1.0-1.2	●	●	●	●
UB5033-40	4.5mt	Steel Liner x 4mt	Moulded Nipple	1.0-1.2	●	●	●	●
UB5033-50	5.5mt	Steel Liner x 5mt	Moulded Nipple	1.0-1.2	●	●	●	●
								
UB5033-30B	3.5mt	Steel Liner x 3mt	Brass Nipple	1.0-1.2	●	●	●	●
UB5033-40B	4.5mt	Steel Liner x 4mt	Brass Nipple	1.0-1.2	●	●	●	●
UB5033-50B	5.5mt	Steel Liner x 5mt	Brass Nipple	1.0-1.2	●	●	●	●
								
UB5035-30B	3.5mt	Steel Liner x 3mt	Moulded Nipple	1.2-1.6	●	●	●	●
UB5035-40B	4.5mt	Steel Liner x 4mt	Moulded Nipple	1.2-1.6	●	●	●	●
UB5035-50B	5.5mt	Steel Liner x 5mt	Moulded Nipple	1.2-1.6	●	●	●	●

● Standard wear part range ● Torch package standard wear part set-up

Welding & Cutting Torch Technology

JINAN UNIARC WELDING TECHNOLOGY CO., LTD

13A Zhangjin Comprehensive Bonded Zone
33688, Jing Shi Dong Road
Jinan Area of China (Shandong) Pilot Free Trade Zone
Jinan 250102, P.R. China

Tel: +86 531 88239823

Website: www.uniarctorchology.com

Email: info@uniarctorchology.com

MPU003 / V.2024.03