



Welding & Cutting Torch Technology

Product Catalogue

BZL Progrip Series



About Us

Uniarc is part of a group of companies specializing in the production of Welding and Cutting torches.

With over 40 years experience, the group is positioned as a global leader at the heart of the welding torch industry.

Originally established in the United Kingdom in the 1980's, the company is now a fully-fledged, vertically integrated Chinese product innovator and manufacturer.

Our customers span a full cross section of the industry, ranging from general distribution to leading global original equipment manufacturers.

Our products are used in a broad cross-section of industrial sectors ranging from auto body repair to ship building.

Whether you need a standard off the shelf product or a customized branded option with your own colours, logos and packaging we have a one stop solution for your requirements.

Our team are here to help, contact us today if you need anymore information.



find out more www.uniartorchology.com

Contents

	Features Focus	2
	Range Overview	4
	Torch Model	
Air-Cooled	Progrip PG150A	8
	Progrip PG240A	9
	Progrip PG250A	10
	Progrip PG360A	11
	Progrip PG380A	12
	Progrip PG360A Auto	13
Liquid-Cooled	Progrip PG240W	14
	Progrip PG401W	15
	Progrip PG501W	16
	Progrip PG555W	17
	Progrip PG605W	18
	Progrip PG501W Auto	19
	Features Focus	20
	Range Overview	21
Lite Air-Cooled	Progrip Lite 150A	22
	Progrip Lite 240A	23
	Progrip Lite 250A	24
	Progrip Lite 360A	25
	Wear Parts	
	BZL Nozzles	26
	BZL Nozzle Adaptors	27
	BZL Contact Tips	27
	BZL Tip Adaptors	29
	BZL Diffusers	30
	BZL Liners	31
	Customized Branding Options	
	Handle Options	35
	Trigger Options	35
	Label Options	36

BZL Progrip Mig / Mag Air-Cooled Series

Features Focus

Premium torches offered in a neutral brand, with the option to customize with your own colours and packaging giving your brand a presence that truly stands out.

Consumable Parts

All wear and spare parts are manufactured to the same specification as the OEM and are fully interchangeable.

Hanger Hook

A "plug and play" option, they encourage the operator to hang the torch off the ground where it is easy to locate.

Trigger

Rapid field servicing ensured by a simple "plug and play" system. Switches can be exchanged in 5 seconds without the use of tools.

Knuckle Joint and Cable Support

Small movements of the handle and neck are possible independent of the cable assembly. A moulded polymer cable support increases flexibility and electrode support.



Spring Pins

Fitted with unbreakable spring loaded gun plug body pins.

Rear Cable Support

Extra length cable support systems ensure smooth and consistent wire feed at any angle.

Gun Plug Housing

Tough and damage resistant, housings and nuts are formed in robust glass-reinforced polymers encasing all conductive parts in accordance with EN60974-7.

Swan Necks

Manufactured to the same specification as the OEM.

Ergo Handle

A patented screwless design combines the ultimate in balance, positioning and ergonomics.

Torch handles disassemble in 5 seconds for rapid fault analysis. Top and bottom handle soft grips ensure all-day welder comfort.



Cable Systems

Air-Cooled cable assemblies offer outstanding flexibility with the highest heat and abrasion resistance of any known cable.

The outer jacket is constructed from cross-linked polymers providing a tear proof outer with a burn threshold of 375°C.



BZL Progrip Mig / Mag Liquid-Cooled Series

Features Focus

Premium torches offered in a neutral brand, with the option to customize with your own colours and packaging giving your brand a presence that truly stands out.

Consumable Parts

All wear and spare parts are manufactured to the same specification as the OEM and are fully interchangeable.

Hanger Hook

A "plug and play" option, they encourage the operator to hang the torch off the ground where it is easy to locate.

Trigger

Rapid field servicing ensured by a simple "plug and play" system. Switches can be exchanged in 5 seconds without the use of tools.

Knuckle Joint and Cable Support

Small movements of the handle and neck are possible independent of the cable. A moulded polymer cable support increases flexibility and electrode support.

Swan Necks

Manufactured to the same specification as the OEM.

Ergo Handle

Handle weight has been reduced wherever possible, which when combined with the correct ratio of cable support length and stiffness, provides the perfect balance between user comfort and excellent wire feed performance.

Top and bottom handle soft grips ensure all-day welder comfort.



Cable Systems

Liquid-Cooled cable systems use high temperature-resistant rubber cables and are colour-coded for ease of identification.

Unique cable end geometries ensure leak free terminations.



Spring Pins

Fitted with unbreakable spring loaded gun plug body pins.

Water In/Out Supports

Fitted as standard to ensure delivery and uninterrupted flow rate of coolants.

Rear Cable Support

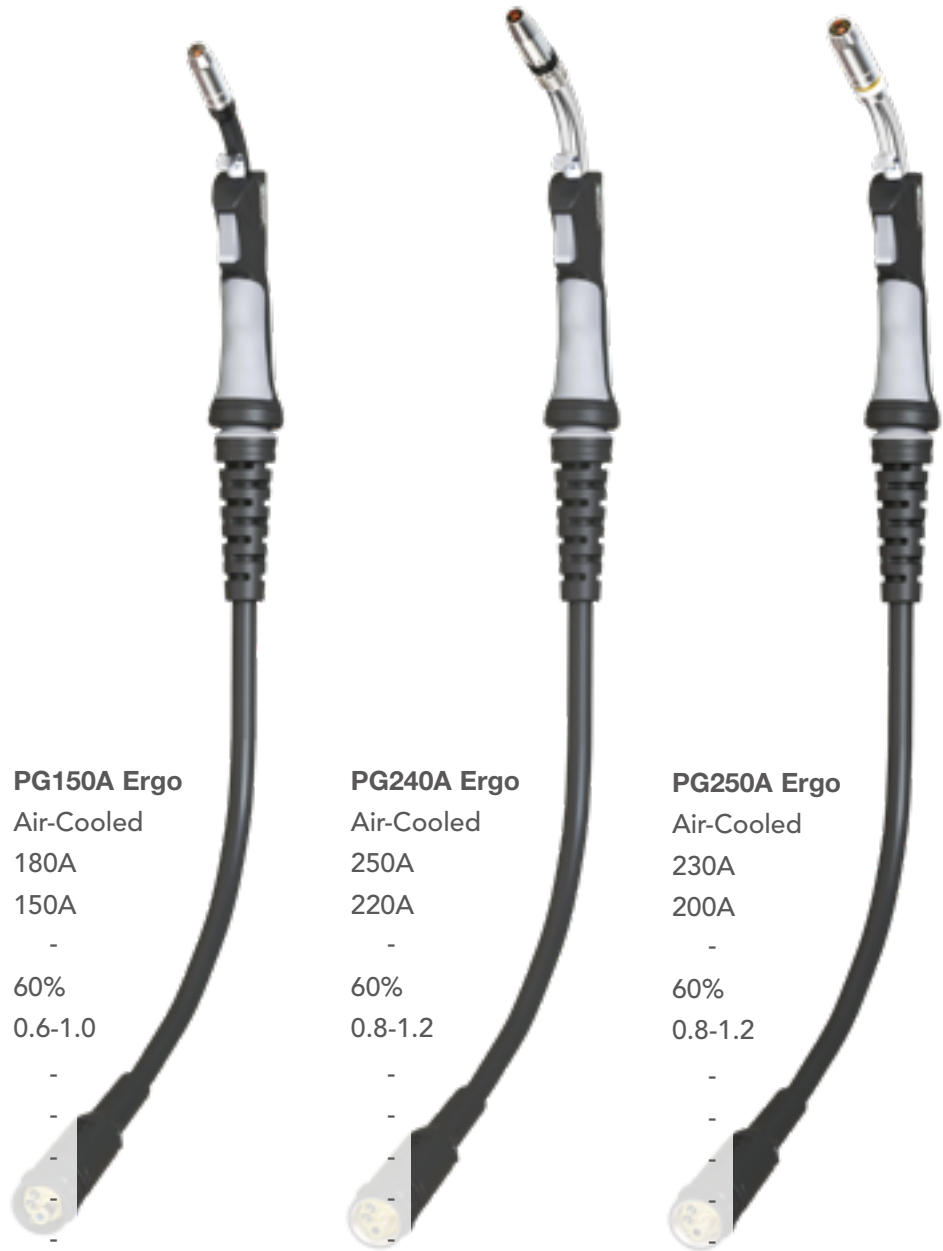
Extra length cable support systems ensure smooth and consistent wire feed at any angle.

Gun Plug Housing

Tough and damage resistant, housings and nuts are formed in robust glass-reinforced polymers encasing all conductive parts in accordance with EN60974-7.

BZL Progrip Mig / Mag Torch Series

Ratings: 150 Amp to 550 Amp, Mixed Gas M21



Technical Data

Cooling Method

Rating: CO₂

Rating: Mixed Gas M21

Rating: Pulse

Duty Cycle:

Wire Size:

Minimum Water Flow

Minimum Water Inlet Pressure

Minimum Cooling Requirements

Maximum Water Inlet Pressure

Maximum Water Inlet Temperature

PG150A Ergo

Air-Cooled

180A

150A

-

60%

0.6-1.0

-

-

-

-

-

PG240A Ergo

Air-Cooled

250A

220A

-

60%

0.8-1.2

-

-

-

-

-

PG250A Ergo

Air-Cooled

230A

200A

-

60%

0.8-1.2

-

-

-

-

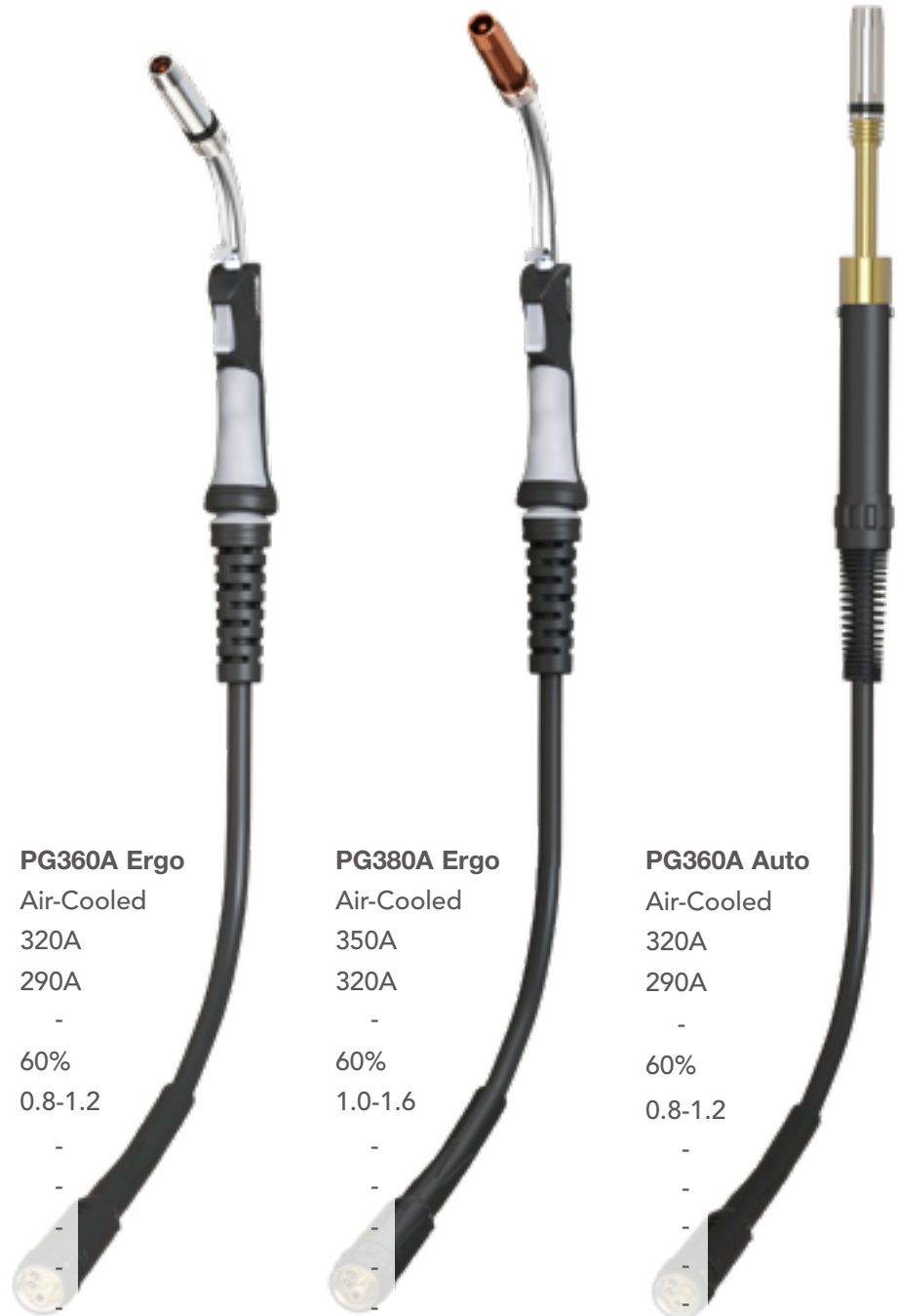
-

Order Codes	3mt	UG1500-30ER	UG2400-30ER	UG2500-30ER
	4mt	UG1500-40ER	UG2400-40ER	UG2500-40ER
	5mt	UG1500-50ER	UG2400-50ER	UG2500-50ER

Standard products can be customized & branded as necessary.

BZL Progrip Mig / Mag Torch Series

Ratings: 150 Amp to 550 Amp, Mixed Gas M21



Technical Data

Cooling Method

Rating: CO₂

Rating: Mixed Gas M21

Rating: Pulse

Duty Cycle:

Wire Size:

Minimum Water Flow

Minimum Water Inlet Pressure

Minimum Cooling Requirements

Maximum Water Inlet Pressure

Maximum Water Inlet Temperature

PG360A Ergo

Air-Cooled

320A

290A

-

60%

0.8-1.2

-

-

-

-

-

PG380A Ergo

Air-Cooled

350A

320A

-

60%

1.0-1.6

-

-

-

-

-

PG360A Auto

Air-Cooled

320A

290A

-

60%

0.8-1.2

-

-

-

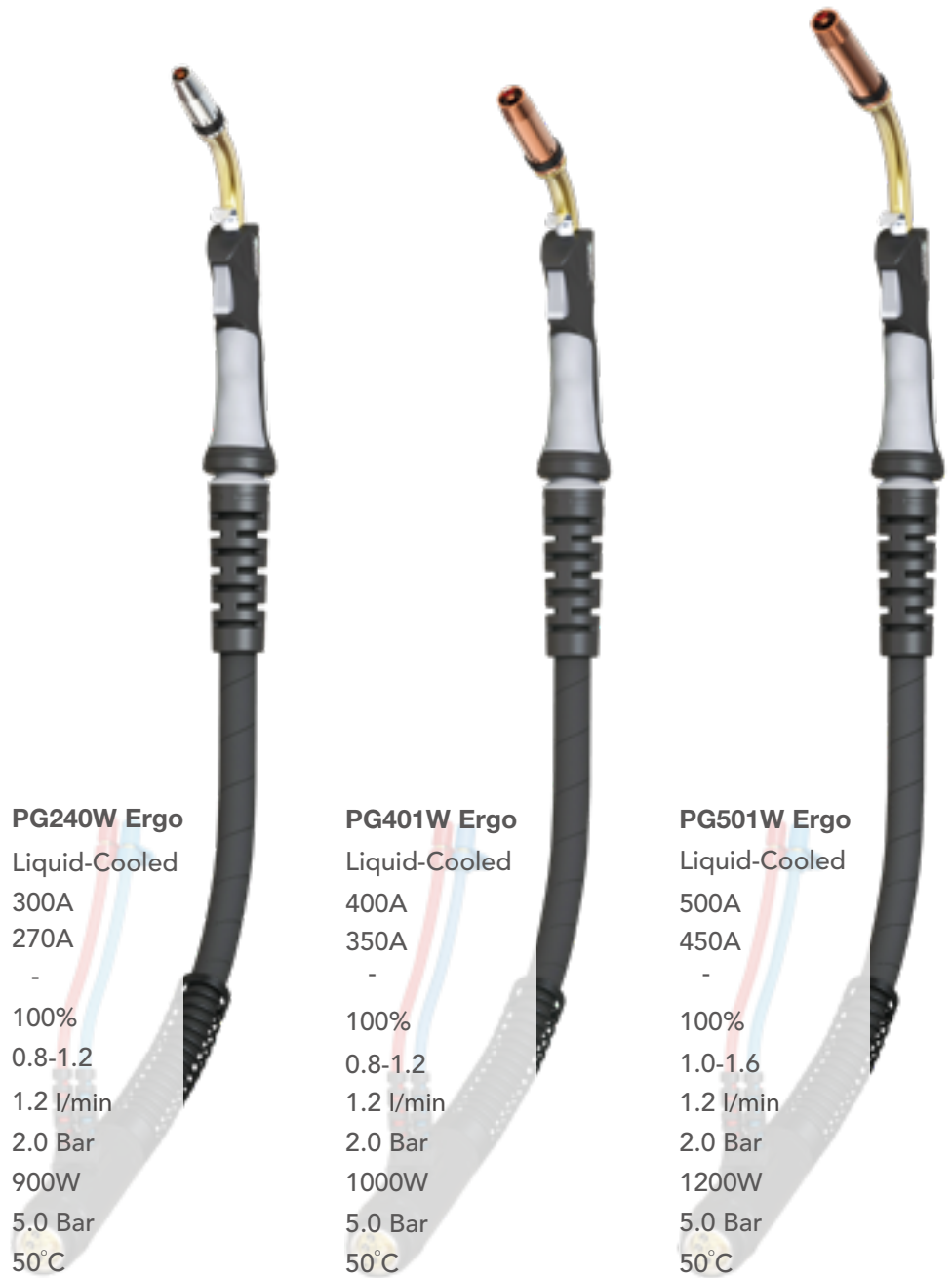
-

-

Order Codes	3mt	UG3600-30ER	UG3800-30ER	UB3600-20A
	4mt	UG3600-40ER	UG3800-40ER	UB3600-30A
	5mt	UG3600-50ER	UG3800-50ER	UB3600-40A

BZL Progrip Mig / Mag Torch Series

Ratings: 150 Amp to 550 Amp, Mixed Gas M21



Technical Data

Cooling Method

Rating: CO₂

Rating: Mixed Gas M21

Rating: Pulse

Duty Cycle:

Wire Size:

Minimum Water Flow

Minimum Water Inlet Pressure

Minimum Cooling Requirements

Maximum Water Inlet Pressure

Maximum Water Inlet Temperature

PG240W Ergo

Liquid-Cooled

300A

270A

-

100%

0.8-1.2

1.2 l/min

2.0 Bar

900W

5.0 Bar

50°C

PG401W Ergo

Liquid-Cooled

400A

350A

-

100%

0.8-1.2

1.2 l/min

2.0 Bar

1000W

5.0 Bar

50°C

PG501W Ergo

Liquid-Cooled

500A

450A

-

100%

1.0-1.6

1.2 l/min

2.0 Bar

1200W

5.0 Bar

50°C

Order Codes	3mt	UG2400W-30ER	UG4001-30ER	UG5000-30ER
	4mt	UG2400W-40ER	UG4001-40ER	UG5000-40ER
	5mt	UG2400W-50ER	UG4001-50ER	UG5000-50ER

BZL Progrip Mig / Mag Torch Series

Ratings: 150 Amp to 550 Amp, Mixed Gas M21



Technical Data

Cooling Method

Rating: CO₂

Rating: Mixed Gas M21

Rating: Pulse

Duty Cycle:

Wire Size:

Minimum Water Flow

Minimum Water Inlet Pressure

Minimum Cooling Requirements

Maximum Water Inlet Pressure

Maximum Water Inlet Temperature

PG555W Ergo

Liquid-Cooled

550A

500A

400A

100%

1.0-1.6

1.2 l/min

2.0 Bar

1500W

5.0 Bar

50°C

PG605W Ergo

Liquid-Cooled

600A

550A

450A

100%

1.0-1.6

1.2 l/min

2.0 Bar

1700W

5.0 Bar

50°C

PG501W Auto

Liquid-Cooled

500A

450A

-

100%

1.0-1.6

1.2 l/min

2.0 Bar

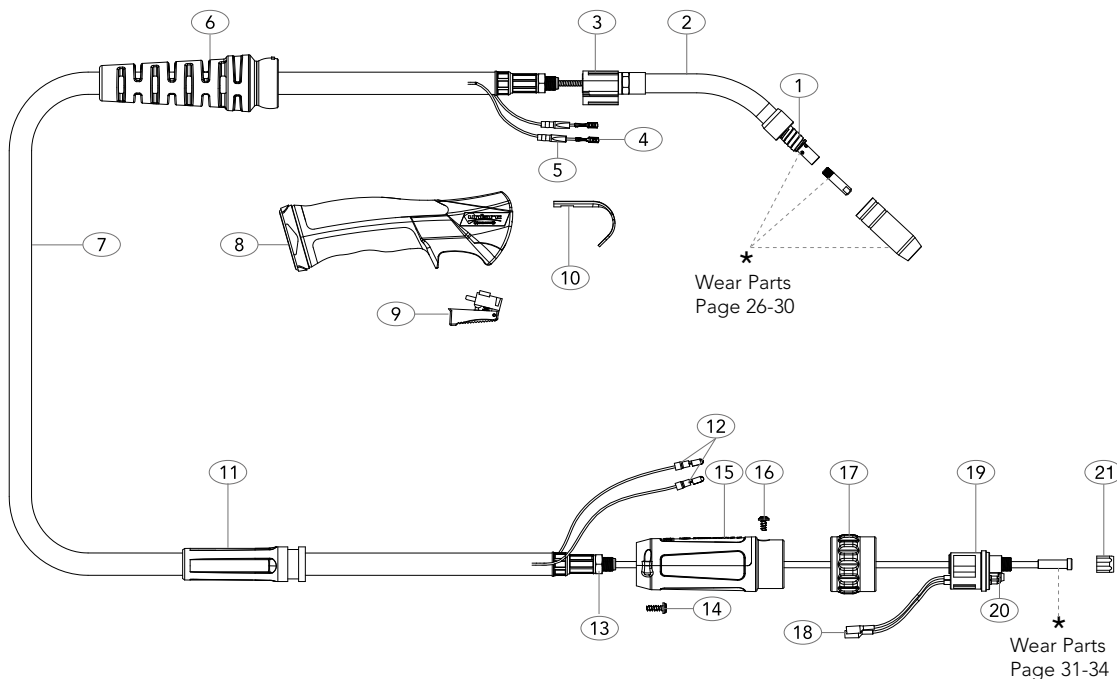
1200W

5.0 Bar

50°C

Order Codes

3mt	UG5550-30ER	UG6050-30ER	UB5000-20A
4mt	UG5550-40ER	UG6050-40ER	UB5000-30A
5mt	UG5550-50ER	UG6050-50ER	UB5000-40A



MODEL

Description	Part Number		
Progrip Ergo Torch Package	3mt UG1500-30ER	4mt UG1500-40ER	5mt UG1500-50ER

SPARE PARTS

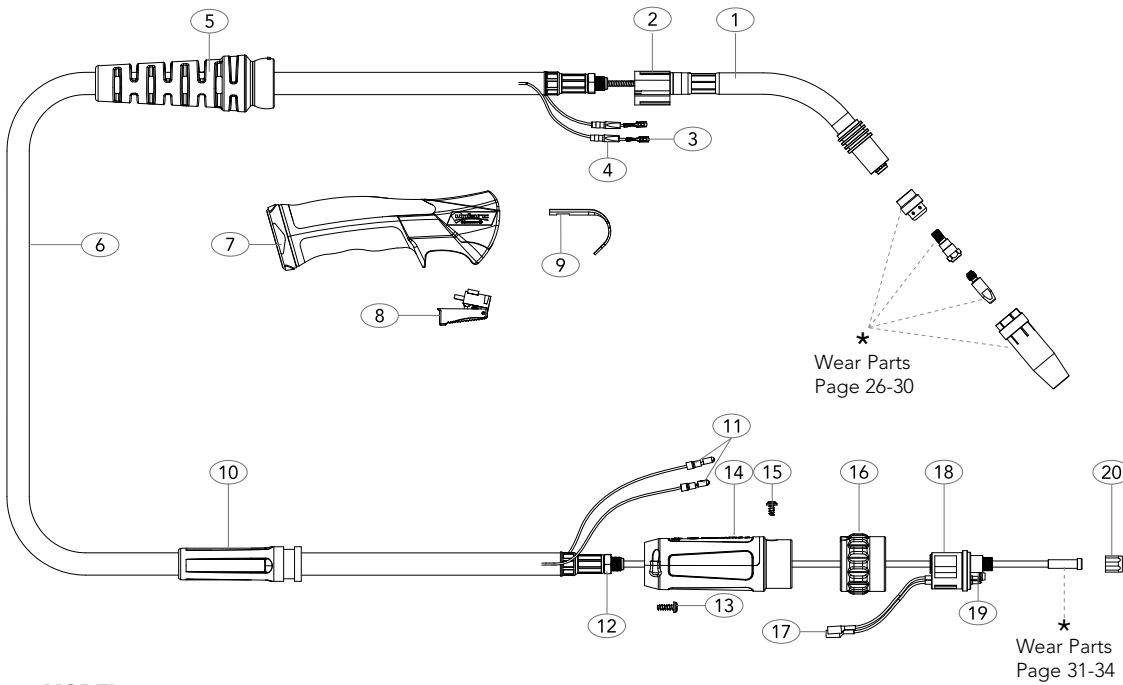
Part Number	Description	Part Number	Description
1 UB1504	Shroud Spring	16 UBL1541	Gun Plug Screw
2 UB1501	Swan Neck	17 UC1519/P	Gun Plug Nut
3 UG1515	Ergo Handle Location Body	18 UB1523	Gun Plug Terminal Female
4 UB1521	Cable Terminal	19 UC1528	Hybrid Gun Plug Body c/w Spring Pins
5 UB1521-C	Cable Terminal Cover	20 UB1524	Gun Plug 'O' Ring
6 UG8015	Handle Cable Support c/w Ball Joint	21 UB1525	Liner Nut
7 UB1517-30	Cable Assembly x 3mt		
UB1517-40	Cable Assembly x 4mt		
UB1517-50	Cable Assembly x 5mt		
8 UG2514	Ergo Handle Kit c/w Lock Nut		
9 UG2516	Medium / Large Trigger		
10 UB2517	Hanger Hook (Optional Extra)		
11 UC2841	Cable Support		
12 UB1522	Cable Terminal Male		
13 UB1505	Lock Nut		
14 SCSP1-1	Gun Plug Housing Screw		
15 SC2578/S	Gun Plug Housing		

**Standard products can be fully
customized and branded**

All products conform to EN60974-7, **CE** and are RoHS2, REACH and WEEE compliant

PG240A Air-Cooled MIG Welding Torch

Rating: 250A CO₂ 220A mixed gas M21, EN60974-7 @ 60% duty cycle. 0.8 to 1.2mm wires



MODEL

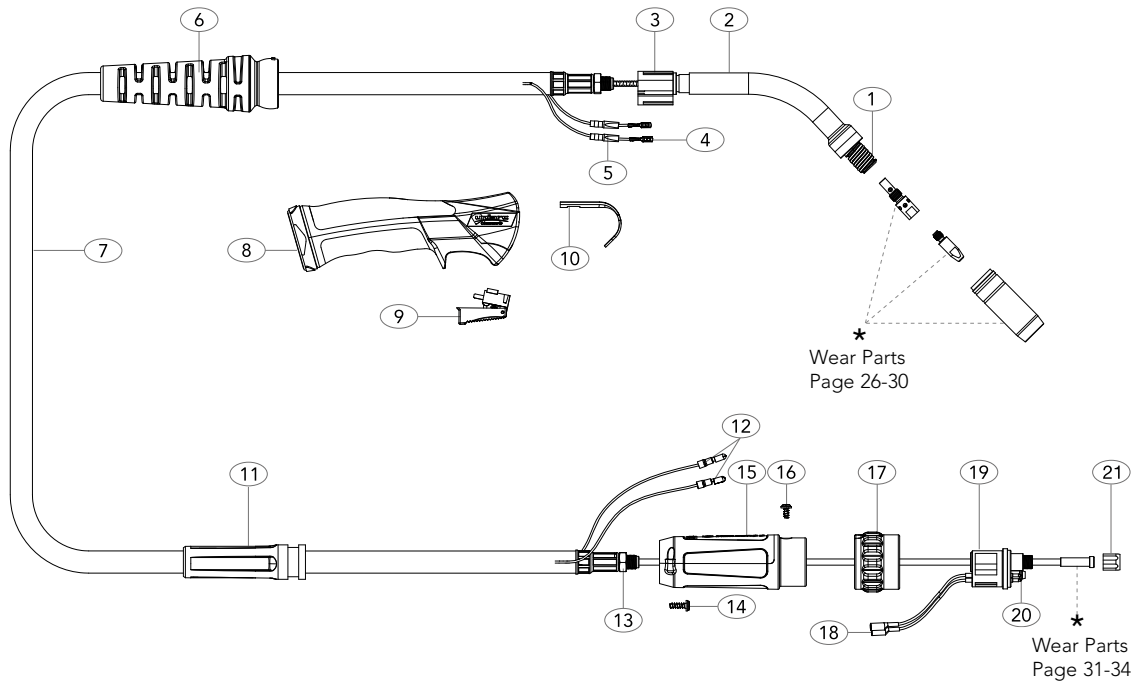
Description	Part Number		
Progrip Ergo Torch Package	3mt UG2400-30ER	4mt UG2400-40ER	5mt UG2400-50ER

SPARE PARTS

Part Number	Description	Part Number	Description
1 UG2401	Swan Neck	16 UC1519/S	Gun Plug Nut
2 UG1515	Ergo Handle Location Body	17 UB1523	Gun Plug Terminal Female
3 UB1521	Cable Terminal	18 UC1528	Hybrid Gun Plug Body c/w Spring Pins
4 UB1521-C	Cable Terminal Cover	19 UB1524	Gun Plug 'O' Ring
5 UG8015	Handle Cable Support c/w Ball Joint	20 UB1525	Liner Nut
6 UB2603-30	Cable Assembly x 3mt		
UB2603-40	Cable Assembly x 4mt		
UB2603-50	Cable Assembly x 5mt		
7 UG2514	Ergo Handle Kit c/w Lock Nut		
8 UG2516	Medium / Large Trigger		
9 UB2517	Hanger Hook (Optional Extra)		
10 UC2841	Cable Support		
11 UB1522	Cable Terminal Male		
12 UB1505	Lock Nut		
13 SCSP1-1	Gun Plug Housing Screw		
14 SC2578/S	Gun Plug Housing		
15 UBL1541	Gun Plug Screw		

**Standard products can be fully
customized and branded**

All products conform to EN60974-7, **CE** and are RoHS2, REACH and WEEE compliant



MODEL

Description	Part Number		
Progrip Ergo Torch Package	3mt UG2500-30ER	4mt UG2500-40ER	5mt UG2500-50ER

SPARE PARTS

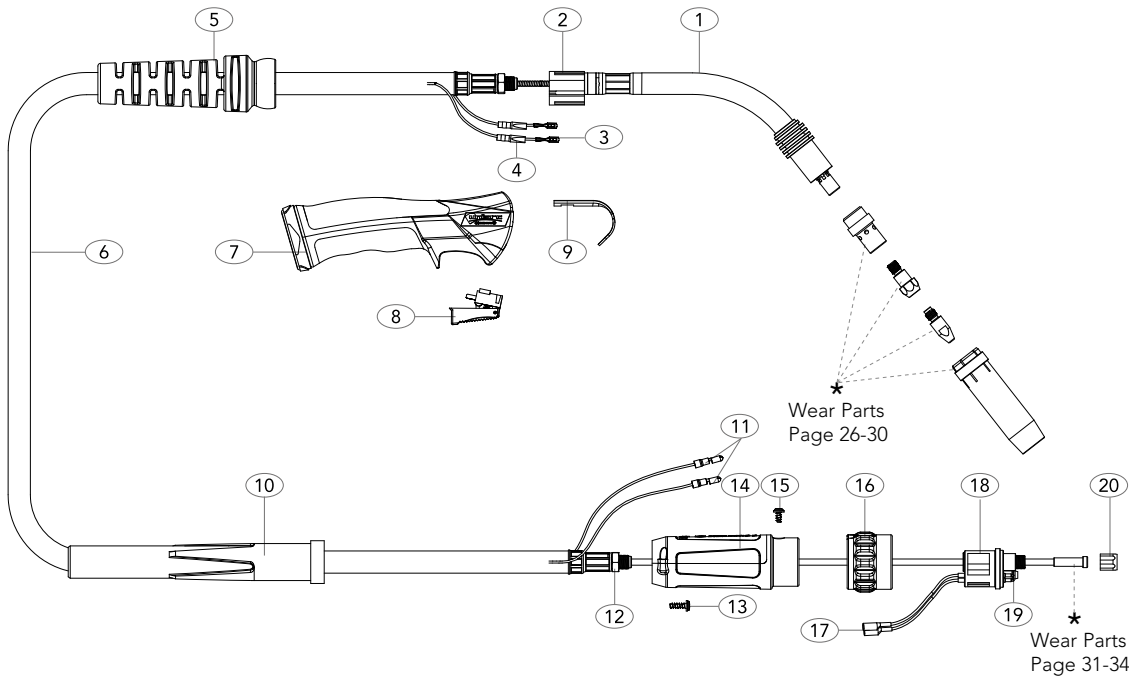
Part Number	Description	Part Number	Description
1 UB2502	Shroud Spring	16 UBL1541	Gun Plug Screw
2 UG2501	Swan Neck	17 UC1519/S	Gun Plug Nut
3 UG1515	Ergo Handle Location Body	18 UB1523	Gun Plug Terminal Female
4 UB1521	Cable Terminal	19 UC1528	Hybrid Gun Plug Body c/w Spring Pins
5 UB1521-C	Cable Terminal Cover	20 UB1524	Gun Plug 'O' Ring
6 UG8015	Handle Cable Support c/w Ball Joint	21 UB1525	Liner Nut
7 UB2503-30	Cable Assembly x 3mt		
UB2503-40	Cable Assembly x 4mt		
UB2503-50	Cable Assembly x 5mt		
8 UG2514	Ergo Handle Kit c/w Lock Nut		
9 UG2516	Medium / Large Trigger		
10 UB2517	Hanger Hook (Optional Extra)		
11 UC2841	Cable Support		
12 UB1522	Cable Terminal Male		
13 UB1505	Lock Nut		
14 SCSP1-1	Gun Plug Housing Screw		
15 SC2578/S	Gun Plug Housing		

**Standard products can be fully
customized and branded**

All products conform to EN60974-7, **CE** and are RoHS2, REACH and WEEE compliant

PG360A Air-Cooled MIG Welding Torch

Rating: 320A CO₂ 290A mixed gas M21, EN60974-7 @ 60% duty cycle. 0.8 to 1.2mm wires



MODEL

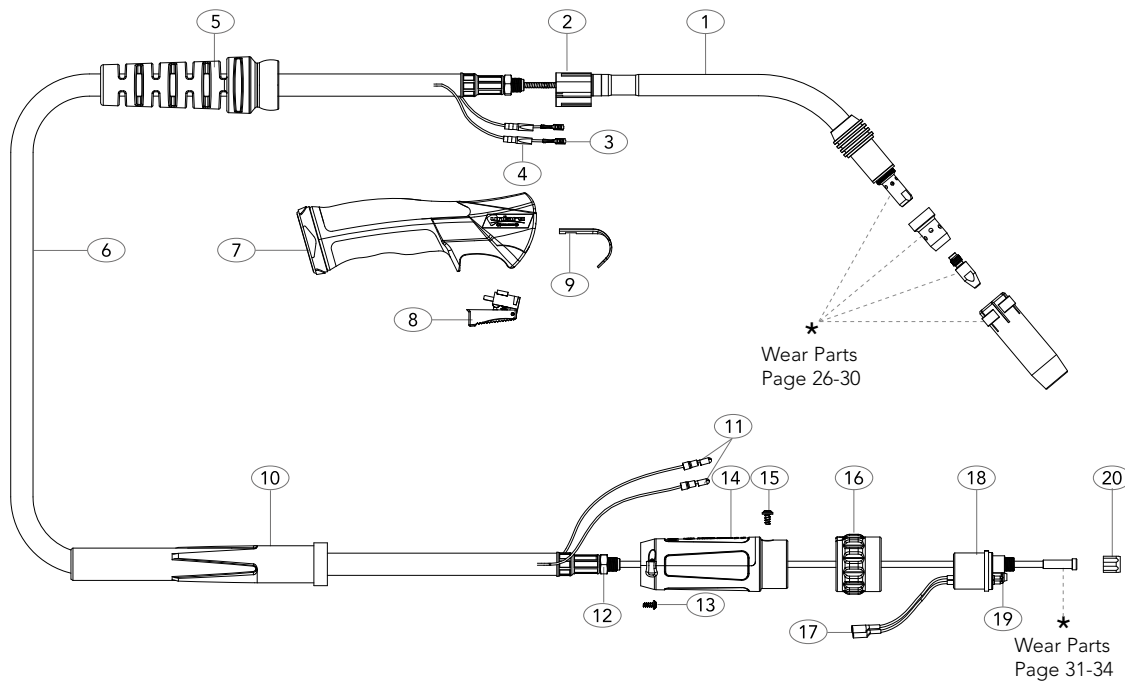
Description	Part Number		
Progrip Ergo Torch Package	3mt UG3600-30ER	4mt UG3600-40ER	5mt UG3600-50ER

SPARE PARTS

Part Number	Description	Part Number	Description
1 UG3603	Swan Neck	16 UC1519/S	Gun Plug Nut
2 UG1515	Ergo Handle Location Body	17 UB1523	Gun Plug Terminal Female
3 UB1521	Cable Terminal	18 UC1528	Hybrid Gun Plug Body c/w Spring Pins
4 UB1521-C	Cable Terminal Cover	19 UB1524	Gun Plug 'O' Ring
5 UG8016	Handle Cable Support c/w Ball Joint	20 UB1525	Liner Nut
6 UB3609-30	Cable Assembly x 3mt		
UB3609-40	Cable Assembly x 4mt		
UB3609-50	Cable Assembly x 5mt		
7 UG2514	Ergo Handle Kit c/w Lock Nut		
8 UG2516	Medium / Large Trigger		
9 UB2517	Hanger Hook (Optional Extra)		
10 UPA3541	Cable Support		
11 UB1522	Cable Terminal Male		
12 UB1505	Lock Nut		
13 SCSP1-1	Gun Plug Housing Screw		
14 SC2578/L	Gun Plug Housing		
15 UBL1541	Gun Plug Screw		

**Standard products can be fully
customized and branded**

All products conform to EN60974-7, **CE** and are RoHS2, REACH and WEEE compliant



MODEL

Description	Part Number		
Progrip Ergo Torch Package	3mt UG3800-30ER	4mt UG3800-40ER	5mt UG3800-50ER

SPARE PARTS

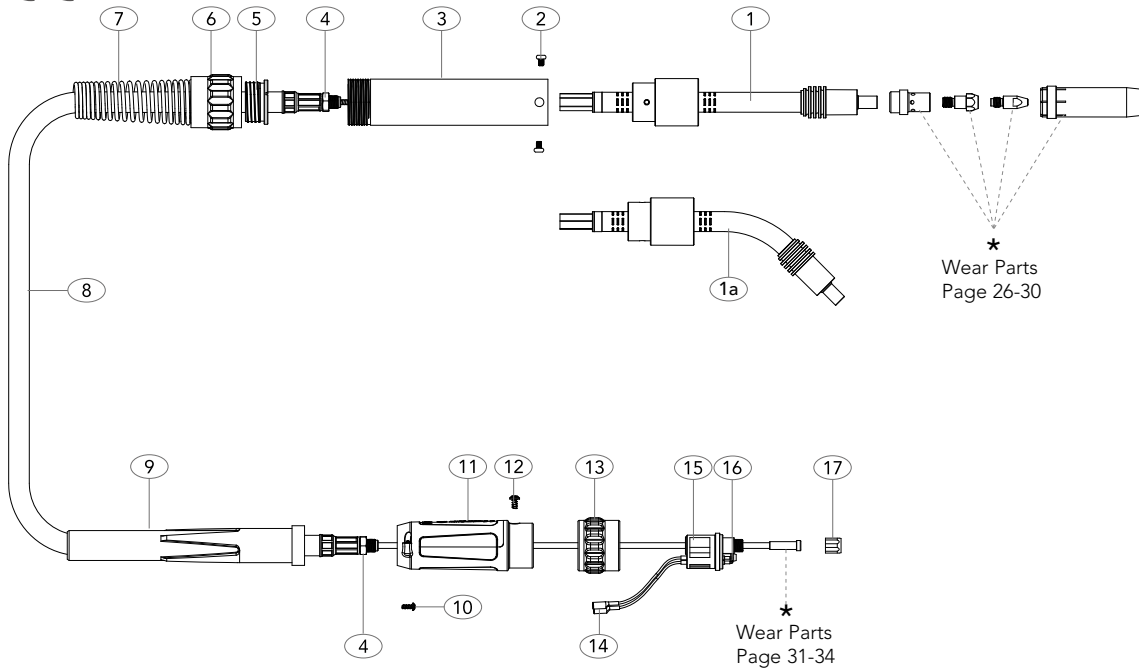
Part Number	Description	Part Number	Description
1 UG3801	Swan Neck	16 UC1519/S	Gun Plug Nut
2 UG1515	Ergo Handle Location Body	17 UB1523	Gun Plug Terminal Female
3 UB1521	Cable Terminal	18 UB1528	Gun Plug Body c/w Spring Pins
4 UB1521-C	Cable Terminal Cover	19 UB1524	Gun Plug 'O' Ring
5 UG8016	Handle Cable Support c/w Ball Joint	20 UB1525	Liner Nut
6 UB3809-30	Cable Assembly x 3mt		
UB3809-40	Cable Assembly x 4mt		
UB3809-50	Cable Assembly x 5mt		
7 UG2514	Ergo Handle Kit c/w Lock Nut		
8 UG2516	Medium/Large Trigger		
9 UB2517	Hanger Hook (Optional Extra)		
10 UPA3541	Cable Support		
11 UB1522	Cable Terminal Male		
12 UB1505	Lock Nut		
13 SCSP1-1	Gun Plug Housing Screw		
14 SC2578/L	Gun Plug Housing		
15 UB1526	Gun Plug Screw		

**Standard products can be fully
customized and branded**

All products conform to EN60974-7, **CE** and are RoHS2, REACH and WEEE compliant

PG360A Auto Air-Cooled MIG Welding Torch

Rating: 320A CO₂ 290A mixed gas M21, EN60974-7 @ 60% duty cycle. 0.8 to 1.2mm wires



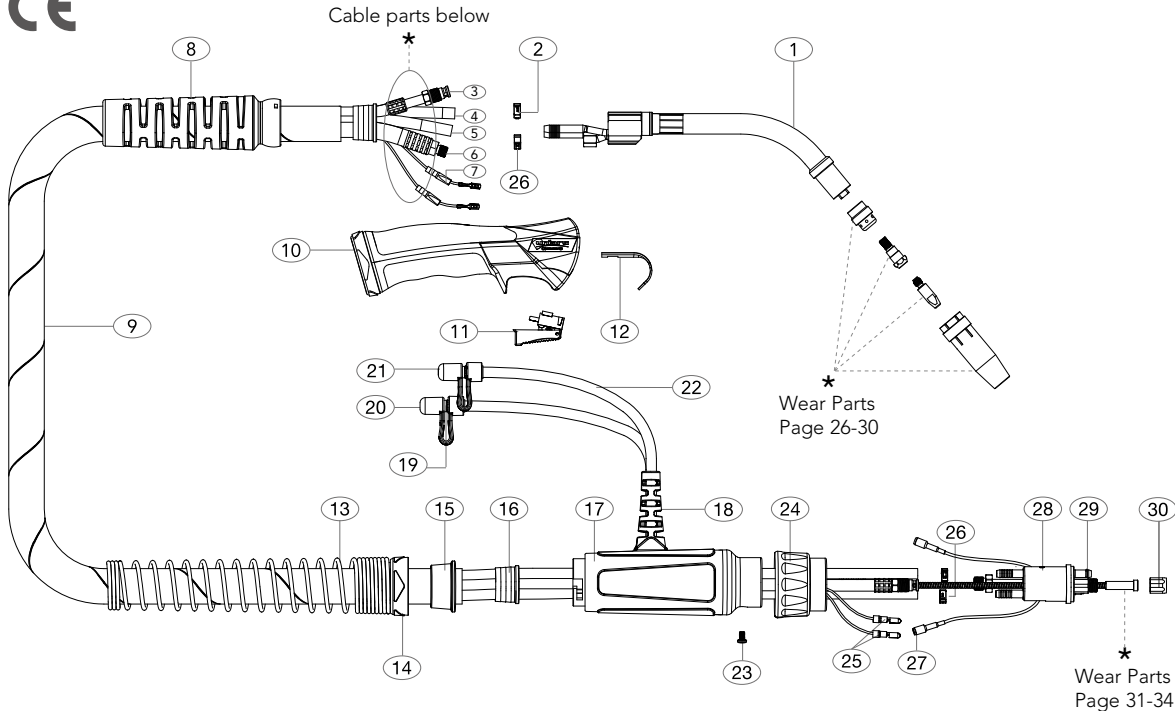
MODEL

Description	Part Number		
Classic Auto Torch	2mt	3mt	4mt
	UB3600-20A	UB3600-30A	UB3600-40A
	UB3600-20A45	UB3600-30A45	UB3600-40A45

SPARE PARTS

Part Number	Description	Part Number	Description
1 UB3627	Swan Neck	16 UB1524	Gun Plug 'O' Ring
1a UB3645A	Swan Neck 45°	17 UB1525	Liner Nut
2 UB3629	Handle Screw		
3 UB3630	Automatic Handle		
4 UB1505	Lock Nut		
5 UB8110A	Auto Handle Insert		
6 UB8030A	Auto Handle Lock Nut		
7 MIG8017A	Auto Handle Spring		
8 UB3609-20A	Cable Assembly x 2mt		
UB3609-30A	Cable Assembly x 3mt		
UB3609-40A	Cable Assembly x 4mt		
9 UPA3541	Cable Support		
10 SCSP1-1	Gun Plug Housing Screw		
11 SC2578/L	Gun Plug Housing		
12 UBL1541	Gun Plug Screw		
13 UC1519/S	Gun Plug Nut		
14 UB1523	Gun Plug Terminal Female		
15 UC1528	Hybrid Gun Plug Body c/w Spring Pins		

All products conform to EN60974-7, **CE** and are RoHS2, REACH and WEEE compliant



MODEL

Description	Part Number		
Progrip Ergo Torch Package	3mt	4mt	5mt
	UG2400W-30ER	UG2400W-40ER	UG2400W-50ER

SPARE PARTS

Part Number	Description
1 UG2409	Swan Neck
2 15400020	Hose Clamp 8.7mm
8 UG3208	Handle Cable Support c/w Ball Joint
9 UG4006-30	Cable Assembly x 3mt
UG4006-40	Cable Assembly x 4mt
UG4006-50	Cable Assembly x 5mt
10 UG2514	Ergo Handle Kit c/w Lock Nut
11 UG2516	Medium / Large Trigger
12 UB2517	Hanger Hook (Optional Extra)
13 UC8027	Housing Spring
14 UT8028	Spring Cable Support Nut
15 UT8009	Canvas Cover Clamp
16 UG8010	Canvas Cover Retainer
17 UT5022	Gun Plug Housing Assembly
18 USLH1820-S	Inlet/Outlet Hose Support
19 UB5023A	Water Hose Nipple
20 UBD-80320	Blue Cap Stopper
21 UBD-80310	Red Cap Stopper
22 UB5017	Water Outlet Hose
23 UB1526	Gun Plug Screw
24 UB1519/S	Gun Plug Nut
25 UB1522	Cable Terminal Male
26 15400023	Water Hose Clamp 10.0mm
27 UB1523	Gun Plug Terminal Female
28 UB5098	Gun Plug Body c/w Spring Pins
29 UB1524	Gun Plug 'O' Ring
30 UB1525	Liner Nut

CABLE PARTS

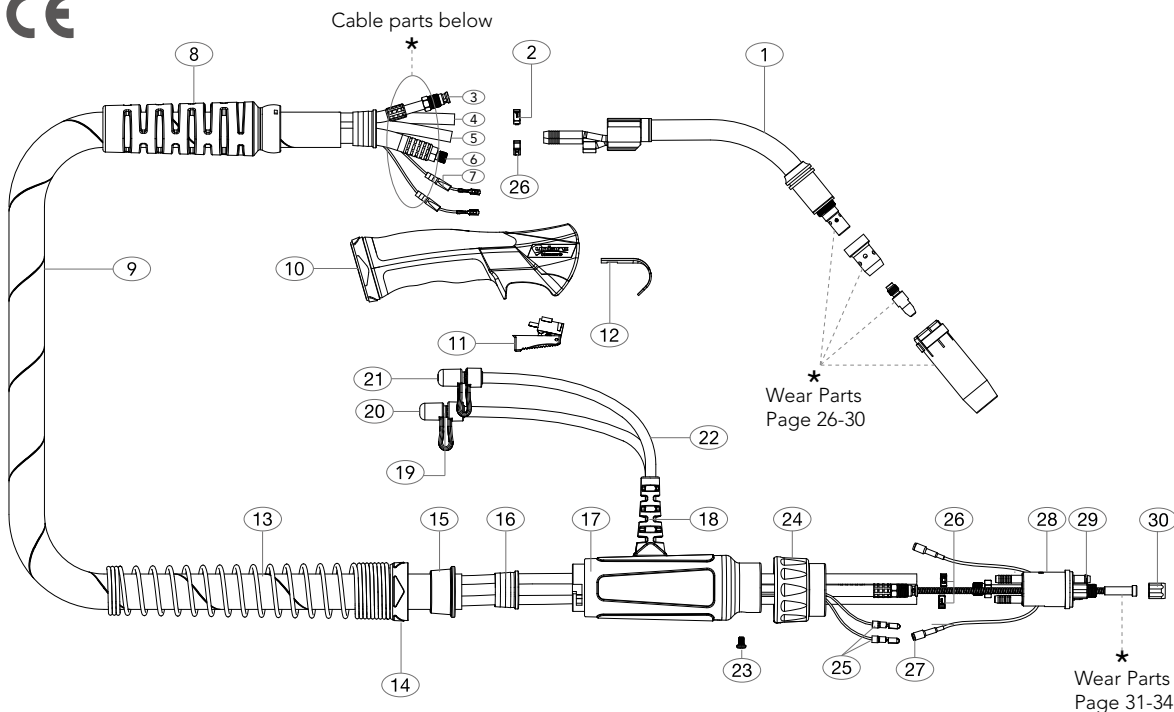
Description	Part Number		
	3mt	4mt	5mt
3 Outer Liner Assembly	UC5008-30	UB5008-40	UB5008-50
4 Gas Hose Assembly	UB5013-30	UB5013-40	UB5013-50
5 Water Inlet Hose Assembly	UB5012-30	UB5012-40	UB5012-50
6 Power Cable Assembly	UB4015-30	UB4015-40	UB4015-50
7 Switch Lead Assembly	UB5010-30	UB5010-40	UB5010-50

Standard products can be fully customized and branded

All products conform to EN60974-7, **CE** and are RoHS2, REACH and WEEE compliant

PG401W Liquid-Cooled MIG Welding Torch

Rating: 400A CO₂ 350A mixed gas M21, EN60974-7 @100% duty cycle. 0.8 to 1.2mm wires



MODEL

Description	Part Number		
	3mt	4mt	5mt
Progrip Ergo Torch Package	UG4001-30ER	UG4001-40ER	UG4001-50ER

SPARE PARTS

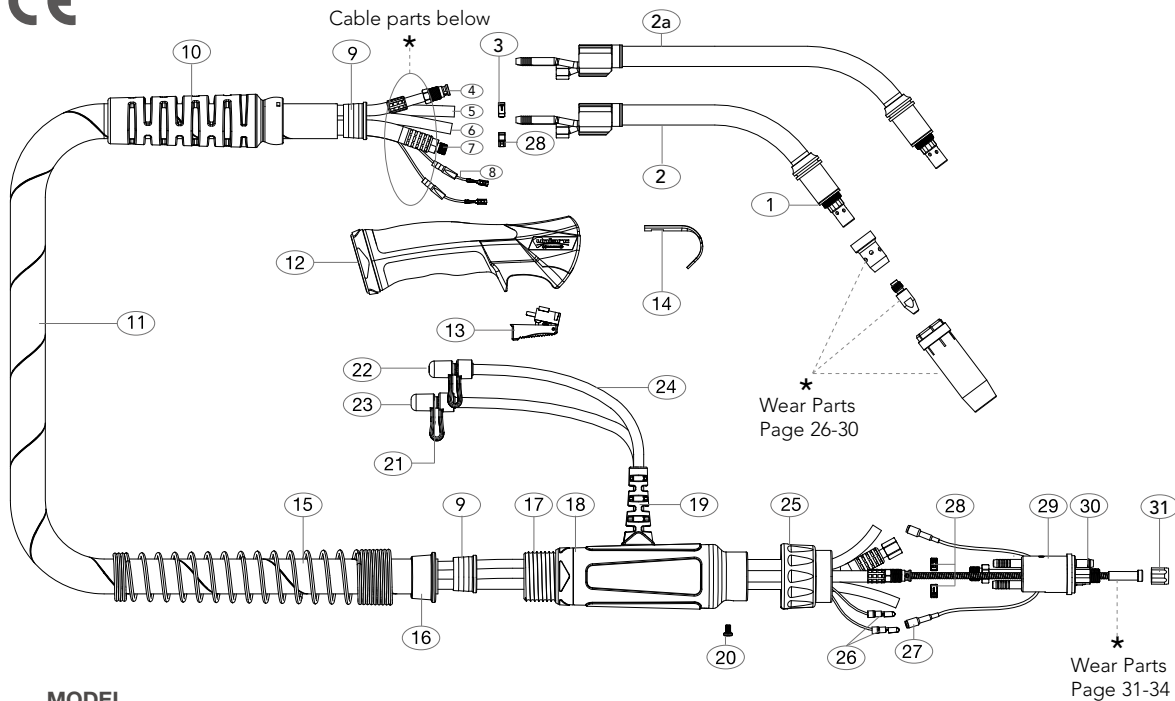
Part Number	Description
1 UG4011	Swan Neck
2 15400020	Hose Clamp 8.7mm
8 UG3208	Handle Cable Support c/w Ball Joint
9 UG4006-30	Cable Assembly x 3mt
UG4006-40	Cable Assembly x 4mt
UG4006-50	Cable Assembly x 5mt
10 UG2514	Ergo Handle Kit c/w Lock Nut
11 UG2516	Medium / Large Trigger
12 UB2517	Hanger Hook (Optional Extra)
13 UC8027	Housing Spring
14 UT8028	Spring Cable Support Nut
15 UT8009	Canvas Cover Clamp
16 UT8010	Canvas Cover Retainer
17 UT5022	Gun Plug Housing Assembly
18 USLH1820-S	Inlet/Outlet Hose Support
19 UB5023A	Water Hose Nipple
20 UBD-80320	Blue Cap Stopper
21 UBD-80310	Red Cap Stopper
22 UB5017	Water Outlet Hose
23 UB1526	Gun Plug Screw
24 UB1519/S	Gun Plug Nut
25 UB1522	Cable Terminal Male
26 15400023	Water Hose Clamp 10.0mm
27 UB1523	Gun Plug Terminal Female
28 UB5098	Gun Plug Body c/w Spring Pins
29 UB1524	Gun Plug 'O' Ring
30 UB1525	Liner Nut

CABLE PARTS

Description	Part Number		
	3mt	4mt	5mt
3 Outer Liner Assembly	UC5008-30	UC5008-40	UC5008-50
4 Gas Hose Assembly	UB5013-30	UB5013-40	UB5013-50
5 Water Inlet Hose Assembly	UB5012-30	UB5012-40	UB5012-50
6 Power Cable Assembly	UB4015-30	UB4015-40	UB4015-50
7 Switch Lead Assembly	UB5010-30	UB5010-40	UB5010-50

Standard products can be fully customized and branded

All products conform to EN60974-7, **CE** and are RoHS2, REACH and WEEE compliant



MODEL

Description	Part Number		
Progrip Ergo Torch Package	3mt	4mt	5mt
	UG5000-30ER UG5000L-30ER	UG5000-40ER UG5000L-40ER	UG5000-50ER UG5000L-50ER

SPARE PARTS

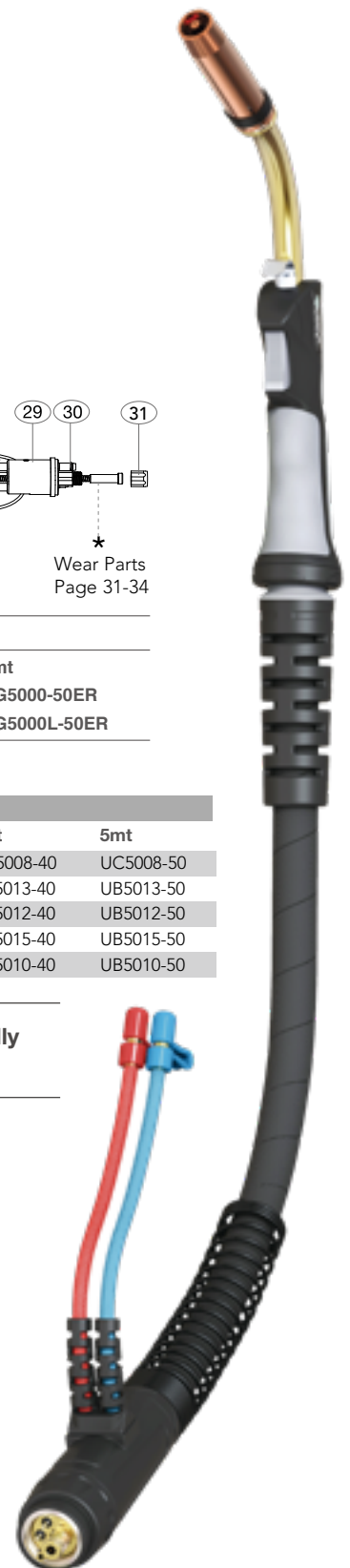
Part Number	Description
1 UB5003	Insulating Washer
2 UG5002	Swan Neck
2a UG5002L	Swan Neck Long
3 1540002	Hose Clamp 8.7mm
9 UG8010	Canvas Cover Retainer Small
10 UG3208	Handle Cable Support c/w Ball Joint
11 UG5006-30	Cable Assembly x 3mt
UG5006-40	Cable Assembly x 4mt
UG5006-50	Cable Assembly x 5mt
12 UG2514	Ergo Handle Kit c/w Lock Nut
13 UG2516	Medium / Large Trigger
14 UB2517	Hanger Hook (Optional Extra)
15 UC8027	Housing Spring
16 UT8009	Canvas Cover Clamp
17 UT8028	Spring Cable Support Nut
18 UT5022	Gun Plug Housing Assembly
19 USLH1820-S	Inlet/Outlet Hose Support
20 UB1526	Gun Plug Screw
21 UB5023A	Water Hose Nipple
22 UBD-80320	Red Cap Stopper
23 UBD-80310	Blue Cap Stopper
24 UB5017	Water Outlet Hose
25 UB1519/S	Gun Plug Nut
26 UB1522	Cable Terminal Male
27 UB1523	Gun Plug Terminal Female
28 15400023	Water Hose Clamp 10.0mm
29 UB5098	Gun Plug Body c/w Spring Pins
30 UB1524	Gun Plug 'O' Ring
31 UB1525	Liner Nut

CABLE PARTS

Description	Part Number		
	3mt	4mt	5mt
4 Outer Liner Assembly	UC5008-30	UC5008-40	UC5008-50
5 Gas Hose Assembly	UB5013-30	UB5013-40	UB5013-50
6 Water Inlet Hose Assembly	UB5012-30	UB5012-40	UB5012-50
7 Power Cable Assembly	UB5015-30	UB5015-40	UB5015-50
8 Switch Lead Assembly	UB5010-30	UB5010-40	UB5010-50

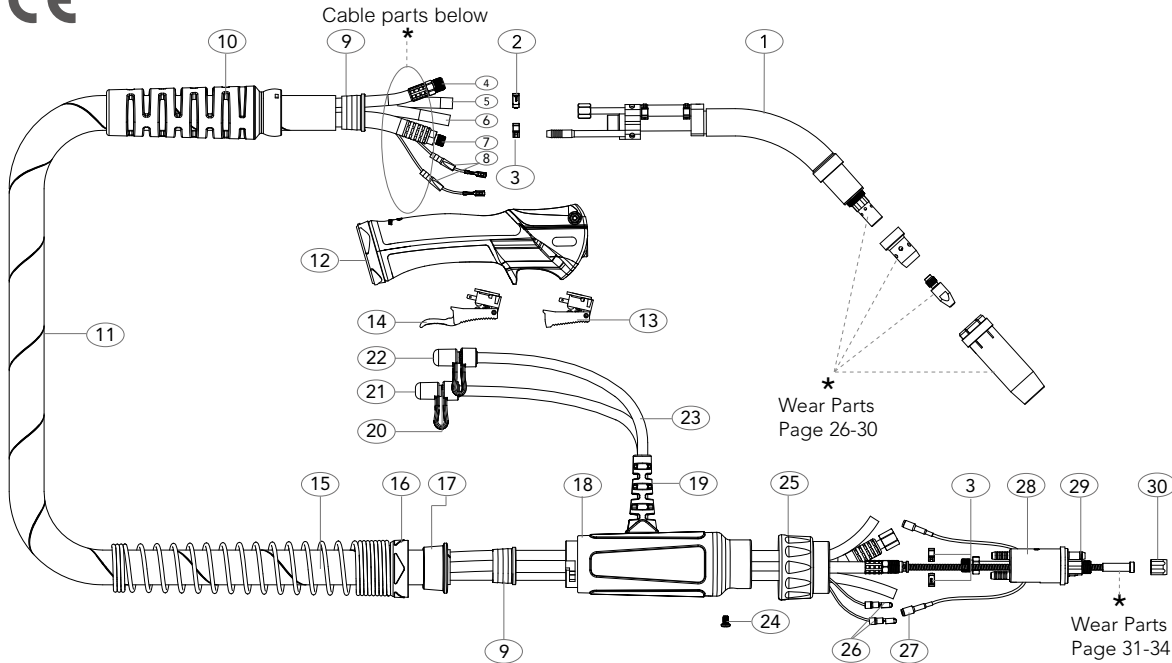
Standard products can be fully customized and branded

All products conform to EN60974-7, **CE** and are RoHS2, REACH and WEEE compliant



PG555W Liquid-Cooled MIG Welding Torch

Rating: 550A CO₂ 500A mixed gas M21, 400A Pulse EN60974-7 @100% duty cycle. 1.0 to 1.6mm wires



MODEL

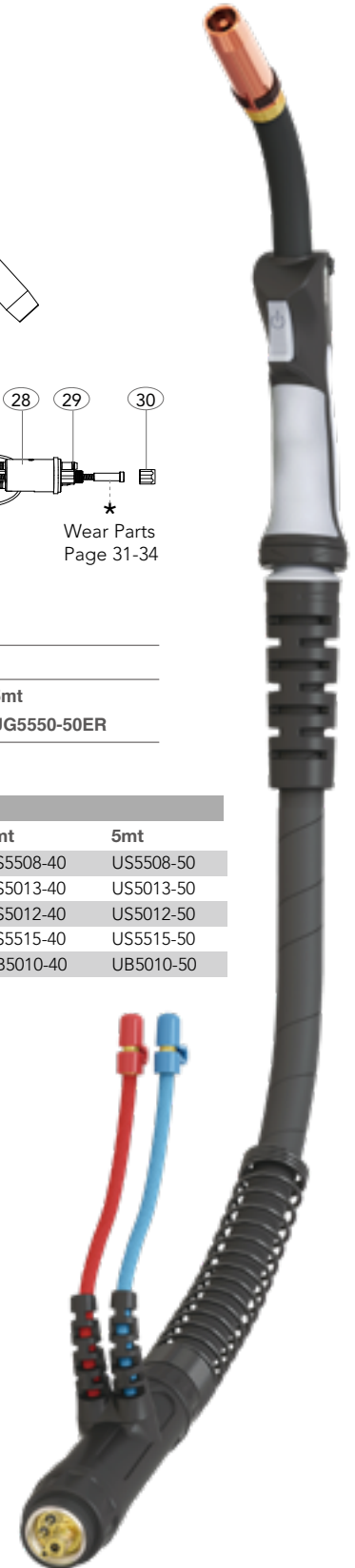
Description	Part Number		
Progrip Ergo Torch Package	3mt UG5550-30ER	4mt UG5550-40ER	5mt UG5550-50ER

SPARE PARTS

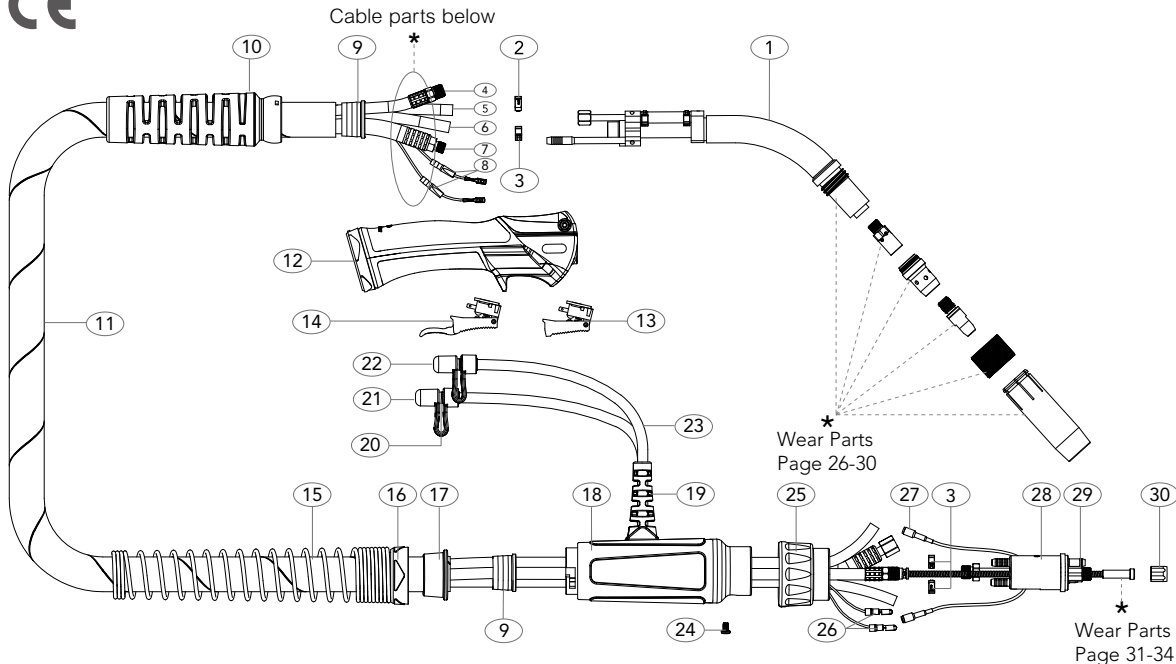
Part Number	Description
1 UB5502	Swan Neck
2 1540002	Hose Clamp 8.7mm
3 15400023	Water Hose Clamp 10.0mm
9 UG8010	Canvas Cover Retainer
10 UG3208	Handle Cable Support c/w Ball Joint
11 UG5506-30	Cable Assembly x 3mt
UG5506-40	Cable Assembly x 4mt
UG5506-50	Cable Assembly x 5mt
12 UG2515	Handle Assembly
13 UGBH2516	Standard Trigger
14 UGBH2516L	Extended Trigger
15 UC8027	Housing Spring
16 UT8028	Spring Cable Support Nut
17 UT8009	Canvas Cover Clamp
18 UT5022	Gun Plug Housing Assembly
19 USLH1820-S	Inlet/Outlet Hose Support
20 UB5023A	Water Hose Nipple
21 UBD-80310	Blue Cap Stopper
22 UBD-80320	Red Cap Stopper
23 UB5017	Water Outlet Hose
24 UB1526	Gun Plug Screw
25 UB1519/S	Gun Plug Nut
26 UB1522	Cable Terminal Male
27 UB1523	Gun Plug Terminal Female
28 UB5098	Gun Plug Body c/w Spring Pins
29 UB1524	Gun Plug 'O' Ring
30 UB1525	Liner Nut

CABLE PARTS

Description	Part Number		
	3mt	4mt	5mt
4 Outer Liner Assembly	US5508-30	US5508-40	US5508-50
5 Gas Hose Assembly	US5013-30	US5013-40	US5013-50
6 Water Inlet Hose Assembly	US5012-30	US5012-40	US5012-50
7 Power Cable Assembly	US5515-30	US5515-40	US5515-50
8 Switch Lead Assembly	UB5010-30	UB5010-40	UB5010-50



All products conform to EN60974-7, **CE** and are RoHS2, REACH and WEEE compliant



MODEL

Description	Part Number		
Progrip Ergo Torch Package	3mt UG6050-30ER	4mt UG6050-40ER	5mt UG6050-50ER

SPARE PARTS

Part Number	Description
1 UB6502	Swan Neck
2 15400020	Hose Clamp 8.7mm
3 15400023	Water Hose Clamp 10.0mm
9 UG8010	Canvas Cover Retainer
10 UG3208	Handle Cable Support c/w Ball Joint
11 UG5506-30	Cable Assembly x 3mt
UG5506-40	Cable Assembly x 4mt
UG5506-50	Cable Assembly x 5mt
12 UG2515	Handle Assembly
13 UGBH2516	Standard Trigger
14 UGBH2516L	Extended Trigger
15 UC8027	Housing Spring
16 UT8028	Spring Cable Support Nut
17 UT8009	Canvas Cover Clamp
18 UT5022	Gun Plug Housing Assembly
19 USLH1820-S	Inlet/Outlet Hose Support
20 UB5023A	Water Hose Nipple
21 UBD-80310	Blue Cap Stopper
22 UBD-80320	Red Cap Stopper
23 UB5017	Water Outlet Hose
24 UB1526	Gun Plug Screw
25 UB1519/S	Gun Plug Nut
26 UB1522	Cable Terminal Male
27 UB1523	Gun Plug Terminal Female
28 UB5098	Gun Plug Body c/w Spring Pins
29 UB1524	Gun Plug 'O' Ring
30 UB1525	Liner Nut

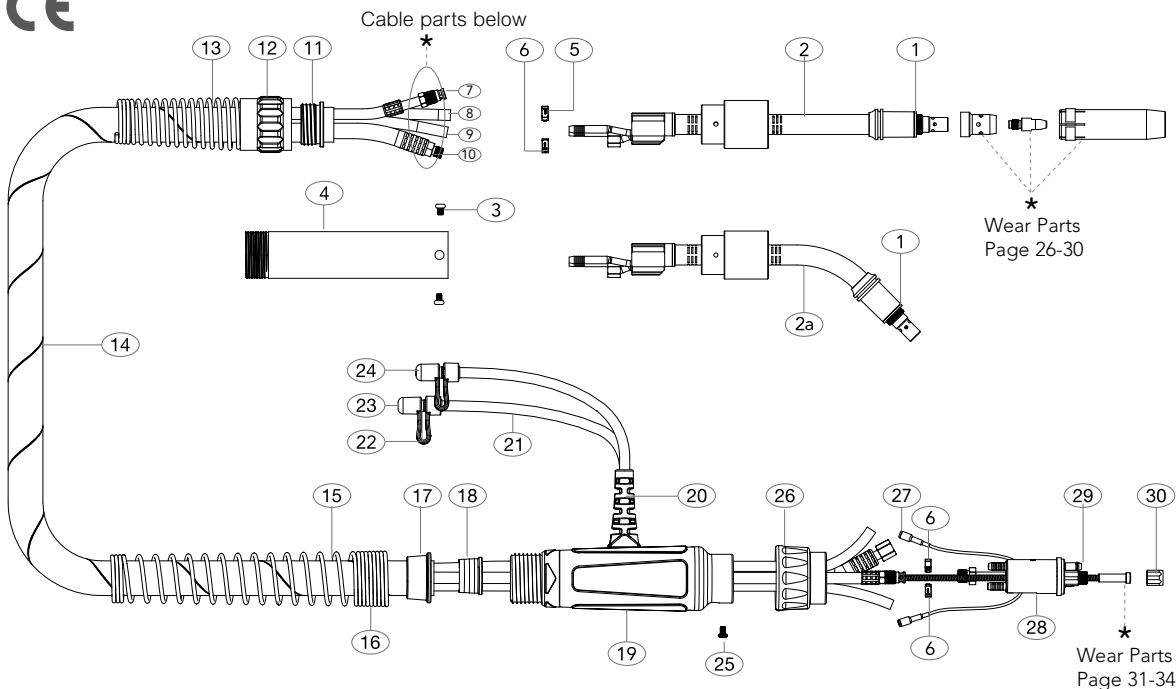
CABLE PARTS

Description	Part Number		
	3mt	4mt	5mt
4 Outer Liner Assembly	US5508-30	US5508-40	US5508-50
5 Gas Hose Assembly	US5013-30	US5013-40	US5013-50
6 Water Inlet Hose Assembly	US5012-30	US5012-40	US5012-50
7 Power Cable Assembly	US5515-30	US5515-40	US5515-50
8 Switch Lead Assembly	UB5010-30	UB5010-40	UB5010-50

All products conform to EN60974-7, **CE** and are RoHS2, REACH and WEEE compliant

PG501W Auto Liquid-Cooled MIG Welding Torch

Rating: 500A CO₂, 450A mixed gas M21, EN60974-7 @ 100% duty cycle. 1.0 to 1.6mm wires



MODEL


Description	Part Number		
Classic Auto Torch	2mt	3mt	4mt
	UB5000-20A	UB5000-30A	UB5000-40A
	UB5000-20A45	UB5000-30A45	UB5000-40A45

SPARE PARTS

Part Number	Description
1 UB5003	Insulating Washer
2 UB5002A	Swan Neck
2a UB5045A	Swan Neck 45°
3 UB3629	Handle Screw
4 UB3630	Automatic Handle
5 15400020	Hose Clamp 8.7mm
6 15400023	Water Hose Clamp 10.0mm
11 UB8110A	Auto Handle Insert
12 UB8030A	Auto Handle Lock Nut
13 UB8017A	Auto Handle Spring
14 UPRB5006-AUTO-20	Cable Assembly x 2mt
UPRB5006-AUTO-30	Cable Assembly x 3mt
UPRB5006-AUTO-40	Cable Assembly x 4mt
15 UC8027	Housing Spring
16 UT8028	Spring Cable Support Nut
17 UT8009	Canvas Cover Clamp
18 UG8010	Canvas Cover Retainer
19 UT5022	Gun Plug Housing Assembly
20 USLH1820-S	Inlet/Outlet Hose Support
21 UB5017	Water Outlet Hose
22 UB5023A	Water Hose Nipple
23 UBD-80320	Red Cap Stopper
24 UBD-80310	Blue Cap Stopper
25 UB1526	Gun Plug Screw
26 UB1519/S	Gun Plug Nut
27 UB1523	Gun Plug Terminal Female

Part Number	Description
28 UB5098	Gun Plug Body c/w Spring Pins
29 UB1524	Gun Plug 'O' Ring
30 UB1525	Liner Nut

Cable parts				
Description	Part Number			
	2mt	3mt	4mt	
7 Outer Liner Assembly	UC5008-20	UC5008-30	UC5008-40	
8 Gas Hose Assembly	UB5013-20	UB5013-30	UB5013-40	
9 Water Inlet Hose Assembly	UB5012-20	UB5012-30	UB5012-40	
10 Power Cable Assembly	UB5015-20	UB5015-30	UB5015-40	



All products conform to EN60974-7, and are RoHS2, REACH and WEEE compliant

Torches are offered in a neutral brand, with the option to customize with your own colours and packaging giving your brand a presence that truly stands out.

Consumable Parts

All wear and spare parts are manufactured to the same specification as the OEM and are fully interchangeable.

Trigger

Rapid field servicing ensured by a simple "plug and play" system. Switches can be exchanged in 5 seconds without the use of tools.

Knuckle Joint and Cable Support

Small movements of the handle and neck are possible independent of the cable assembly. A moulded polymer cable support increases flexibility and electrode support.



Spring Pins

Fitted with unbreakable spring loaded gun plug body pins.

Rear Cable Support

Extra length cable support systems ensure smooth and consistent wire feed at any angle.

Gun Plug Housing

Tough and damage resistant, housings and nuts are formed in robust glass-reinforced polymers encasing all conductive parts in accordance with EN60974-7.

Swan Necks

Manufactured to the same specification as the OEM.

Ergo Handle

A patented screwless design combines the ultimate in balance, positioning and ergonomics.

Torch handles disassemble in 5 seconds for rapid fault analysis. Top and bottom handle soft grips ensure all day welder comfort.



Cable Systems

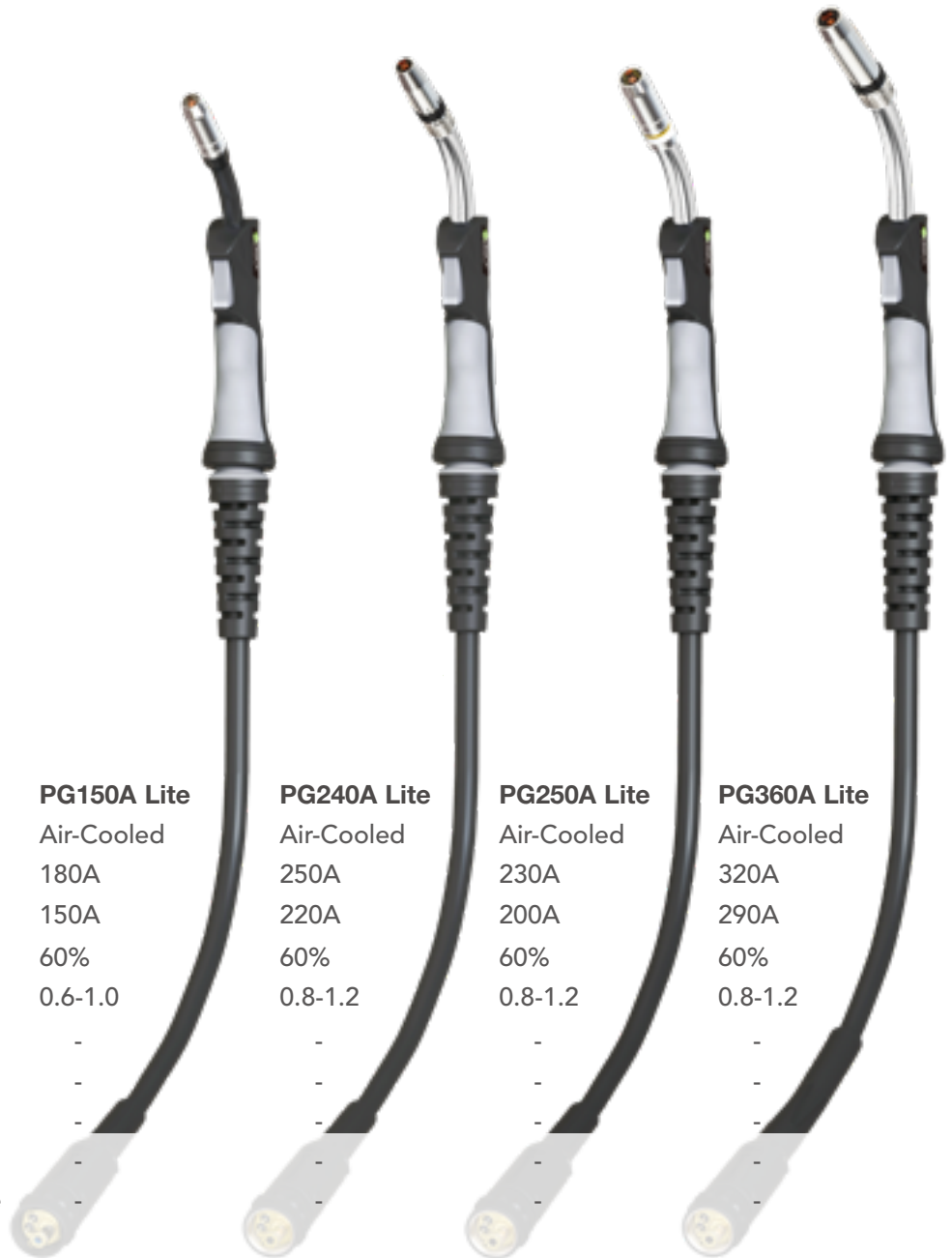
Lite series cable sets offer a 30-40% weight saving at equivalent performance levels.

The outer jacket is constructed from cross-linked polymers providing a tear proof outer with a burn threshold of 375°C.



BZL Progrip Lite Mig / Mag Air-Cooled Series

Ratings: 150 Amp to 290 Amp, Mixed Gas M21

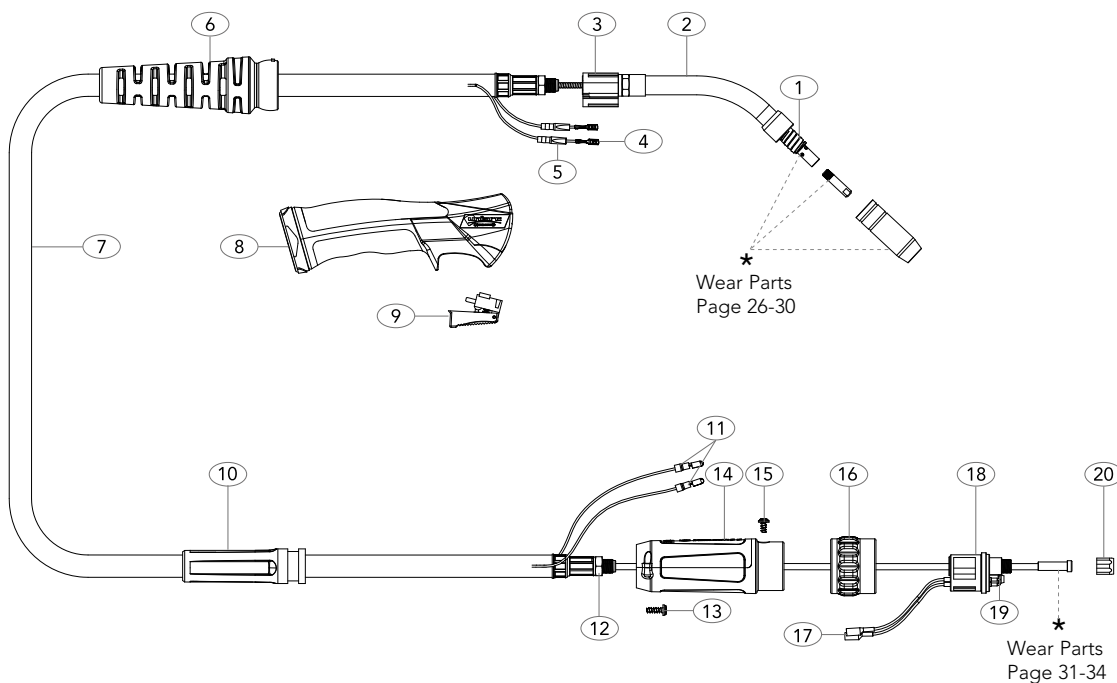


Technical Data	PG150A Lite	PG240A Lite	PG250A Lite	PG360A Lite
Cooling Method	Air-Cooled	Air-Cooled	Air-Cooled	Air-Cooled
Rating: CO ₂	180A	250A	230A	320A
Rating: Mixed Gas M21	150A	220A	200A	290A
Duty Cycle:	60%	60%	60%	60%
Wire Size:	0.6-1.0	0.8-1.2	0.8-1.2	0.8-1.2
Minimum Water Flow	-	-	-	-
Minimum Water Inlet Pressure	-	-	-	-
Minimum Cooling Requirements	-	-	-	-
Maximum Water Inlet Pressure	-	-	-	-
Maximum Water Inlet Temperature	-	-	-	-

Order Codes	3mt	UDU1500-30ER	UDU2400-30ER	UDU2500-30ER	UDU3600-30ER
	4mt	UDU1500-40ER	UDU2400-40ER	UDU2500-40ER	UDU3600-40ER
	5mt	UDU1500-50ER	UDU2400-50ER	UDU2500-50ER	UDU3600-50ER

PG150A Progrid Lite Air-Cooled Mig Welding Torch

Rating: 180A CO₂ 150A mixed gas M21, EN60974-7 @ 60% duty cycle. 0.6 to 1.0mm wires



MODEL

Description	Part Number		
Progrid Lite Torch Package	3mt UDU1500-30ER	4mt UDU1500-40ER	5mt UDU1500-50ER

SPARE PARTS

Part Number	Description	Part Number	Description
1 UB1504	Shroud Spring	15 UBL1541	Gun Plug Screw
2 UB1501	Swan Neck	16 UC1519/P	Gun Plug Nut
3 UG1515	Ergo Handle Location Body	17 UB1523	Gun Plug Terminal Female
4 UB1521	Cable Terminal	18 UC1528	Hybrid Gun Plug Body c/w Spring Pins
5 UB1521-C	Cable Terminal Cover	19 UB1524	Gun Plug 'O' Ring
6 UG8015	Handle Cable Support c/w Ball Joint	20 UB1525	Liner Nut
7 UDU1517-30	Lite Cable Assembly x 3mt		
UDU1517-40	Lite Cable Assembly x 4mt		
UDU1517-50	Lite Cable Assembly x 5mt		
8 UG2514	Ergo Handle Kit c/w Lock Nut		
9 UG2516	Medium / Large Trigger		
10 UC2841	Cable Support		
11 UB1522	Cable Terminal Male		
12 UB1505	Lock Nut		
13 SCSP1-1	Gun Plug Housing Screw		
14 SC2578/S	Gun Plug Housing		

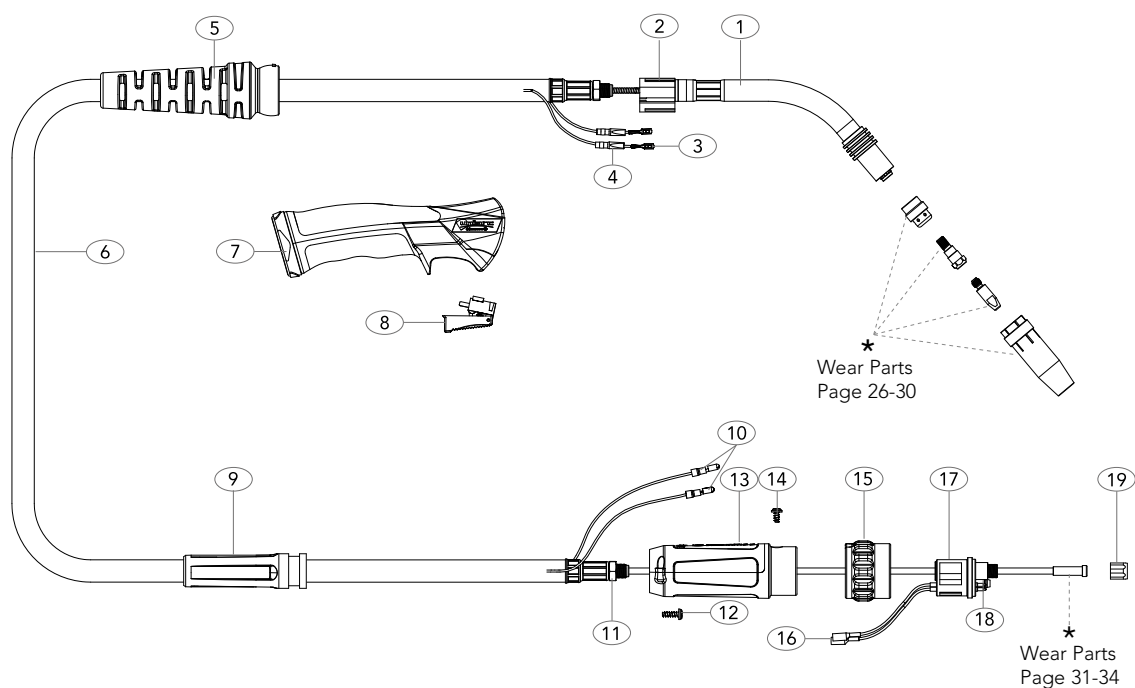
**Standard products can be fully
customized and branded**

Lite Cable

All products conform to EN60974-7, **CE** and are RoHS2, REACH and WEEE compliant

PG240A Progrid Lite Air-Cooled Mig Welding Torch

Rating: 250A CO₂ 220A mixed gas M21, EN60974-7 @ 60% duty cycle. 0.8 to 1.2mm wires



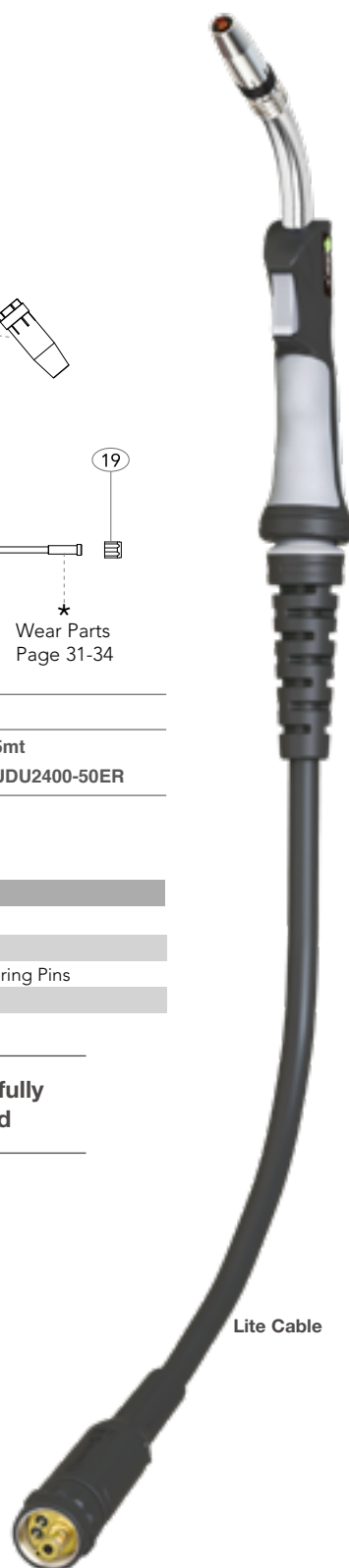
MODEL

Description	Part Number		
Progrid Lite Torch Package	3mt UDU2400-30ER	4mt UDU2400-40ER	5mt UDU2400-50ER

SPARE PARTS

Part Number	Description	Part Number	Description
1 UG2401	Swan Neck	15 UC1519/S	Gun Plug Nut
2 UG1515	Ergo Handle Location Body	16 UB1523	Gun Plug Terminal Female
3 UB1521	Cable Terminal	17 UC1528	Hybrid Gun Plug Body c/w Spring Pins
4 UB1521-C	Cable Terminal Cover	18 UB1524	Gun Plug 'O' Ring
5 UG8015	Handle Cable Support c/w Ball Joint	19 UB1525	Liner Nut
6 UDU2603-30	Lite Cable Assembly x 3mt		
UDU2603-40	Lite Cable Assembly x 4mt		
UDU2603-50	Lite Cable Assembly x 5mt		
7 UG2514	Ergo Handle Kit c/w Lock Nut		
8 UG2516	Medium / Large Trigger		
9 UC3641	Cable Support		
10 UB1522	Cable Terminal Male		
11 UB1505	Lock Nut		
12 SCSP1-1	Gun Plug Housing Screw		
13 SC2578/S	Gun Plug Housing		
14 UBL1541	Gun Plug Screw		

Standard products can be fully
customized and branded

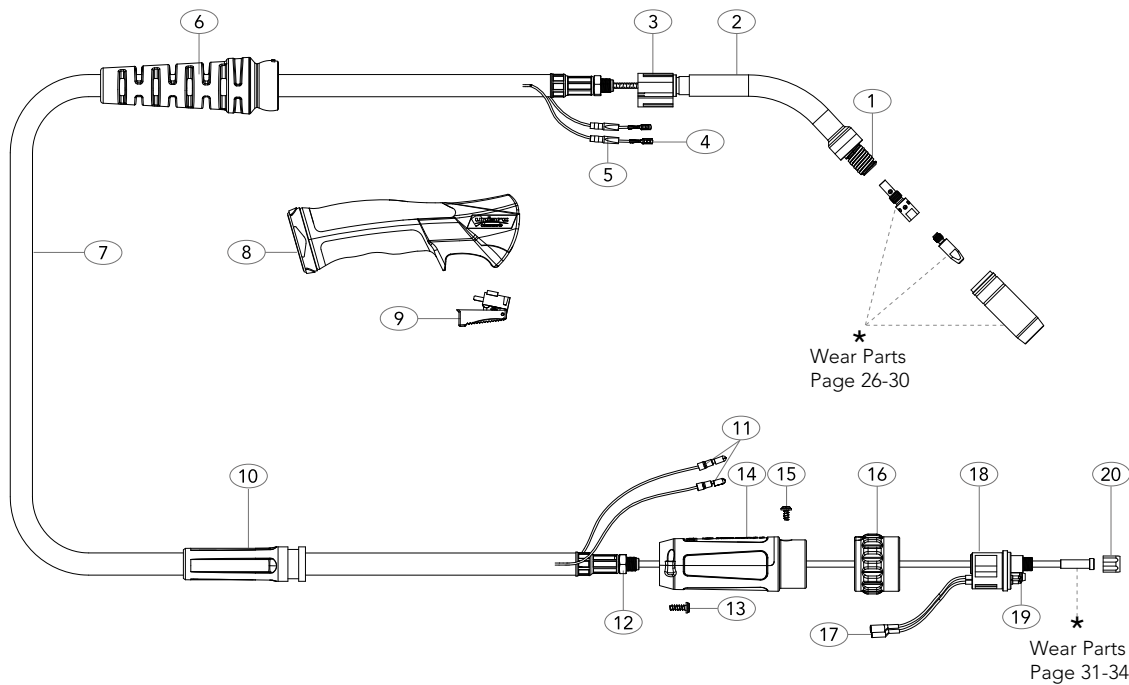


Lite Cable

All products conform to EN60974-7, **CE** and are RoHS2, REACH and WEEE compliant

PG250A Progrip Lite Air-Cooled Mig Welding Torch

Rating: 230A CO₂ 200A mixed gas M21, EN60974-7 @ 60% duty cycle. 0.8 to 1.2mm wires



MODEL

Description	Part Number		
Progrip Lite Torch Package	3mt UDU2500-30ER	4mt UDU2500-40ER	5mt UDU2500-50ER

SPARE PARTS

Part Number	Description	Part Number	Description
1 UB2502	Shroud Spring	15 UBL1541	Gun Plug Screw
2 UG2501	Swan Neck	16 UC1519/S	Gun Plug Nut
3 UG1515	Ergo Handle Location Body	17 UB1523	Gun Plug Terminal Female
4 UB1521	Cable Terminal	18 UC1528	Hybrid Gun Plug Body c/w Spring Pins
5 UB1521-C	Cable Terminal Cover	19 UB1524	Gun Plug 'O' Ring
6 UG8015	Handle Cable Support c/w Ball Joint	20 UB1525	Liner Nut
7 UDU2503-30	Lite Cable Assembly x 3mt		
UDU2503-40	Lite Cable Assembly x 4mt		
UDU2503-50	Lite Cable Assembly x 5mt		
8 UG2514	Ergo Handle Kit c/w Lock Nut		
9 UG2516	Medium / Large Trigger		
10 UC2841	Cable Support		
11 UB1522	Cable Terminal Male		
12 UB1505	Lock Nut		
13 SCSP1-1	Gun Plug Housing Screw		
14 SC2578/S	Gun Plug Housing		

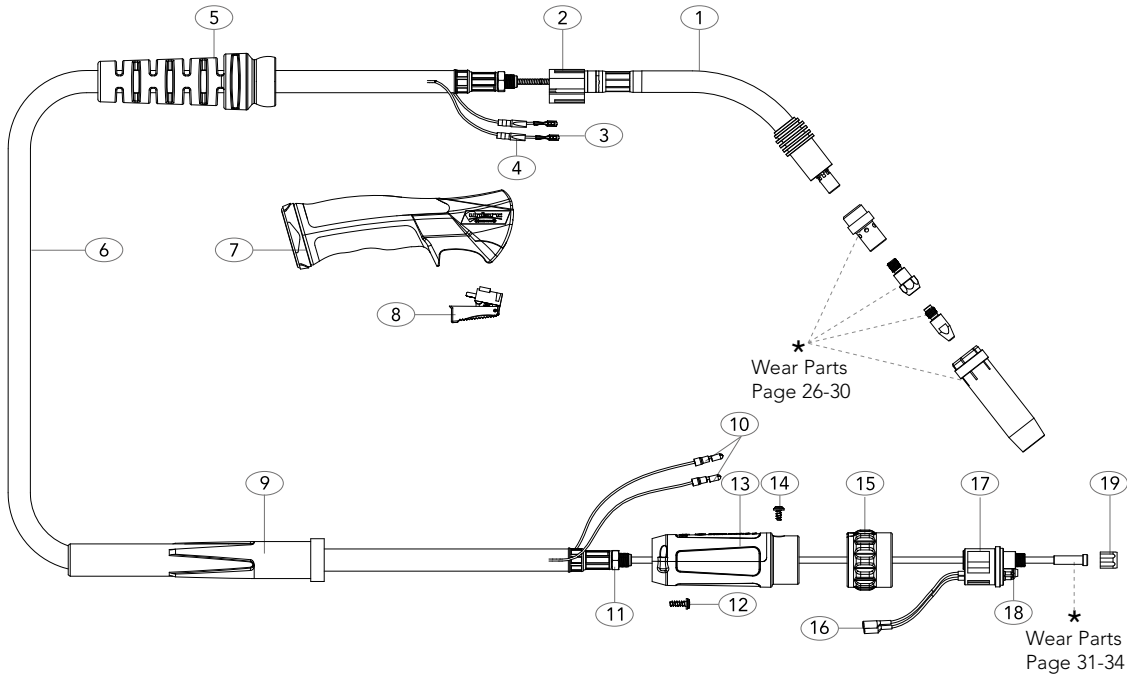
**Standard products can be fully
customized and branded**

Lite Cable

All products conform to EN60974-7, **CE** and are RoHS2, REACH and WEEE compliant

PG360A Progrip Lite Air-Cooled Mig Welding Torch

Rating: 320A CO₂ 290A mixed gas M21, EN60974-7 @ 60% duty cycle. 0.8 to 1.2mm wires



MODEL

Description	Part Number		
Progrip Lite Torch Package	3mt UDU3600-30ER	4mt UDU3600-40ER	5mt UDU3600-50ER

SPARE PARTS

Part Number	Description	Part Number	Description
1 UG3603	Swan Neck	15 UC1519/S	Gun Plug Nut
2 UG1515	Ergo Handle Location Body	16 UB1523	Gun Plug Terminal Female
3 UB1521	Cable Terminal	17 UC1528	Hybrid Gun Plug Body c/w Spring Pins
4 UB1521-C	Cable Terminal Cover	18 UB1524	Gun Plug 'O' Ring
5 UG8016	Handle Cable Support c/w Ball Joint	19 UB1525	Liner Nut
6 UDU3609-30	Lite Cable Assembly x 3mt		
UDU3609-40	Lite Cable Assembly x 4mt		
UDU3609-50	Lite Cable Assembly x 5mt		
7 UG2514	Ergo Handle Kit c/w Lock Nut		
8 UG2516	Medium / Large Trigger		
9 UPA3541	Cable Support		
10 UB1522	Cable Terminal Male		
11 UB1505	Lock Nut		
12 SCSP1-1	Gun Plug Housing Screw		
13 SC2578/L	Gun Plug Housing		
14 UBL1541	Gun Plug Screw		

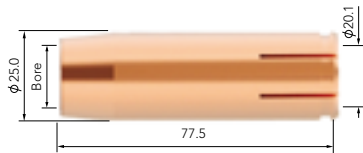
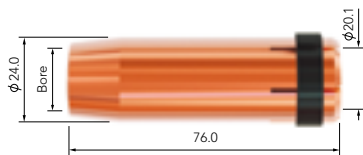
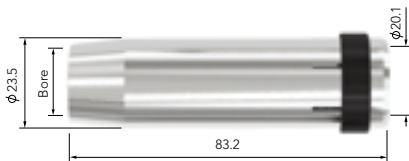
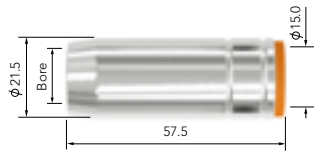
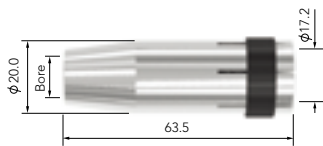
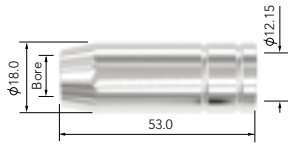
Standard products can be fully
customized and branded



Lite Cable

All products conform to EN60974-7, **CE** and are RoHS2, REACH and WEEE compliant

Wear Parts

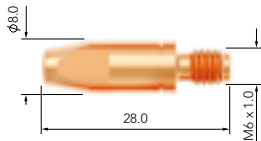
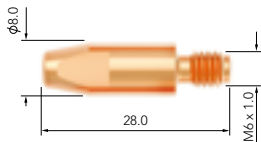
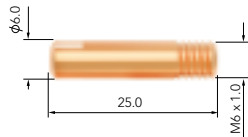
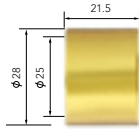


BZL Nozzles

Part No.	Description	Bore	Wall	Material	PG150A	PG240A	PG250A	PG360A (PG380A Alloy)	PG380A	PG240W	PG401W	PG501W (PG501W Alloy)	PG555W	PG605W
UB1529	Cylindrical Nozzle	16.2	0.9mm	Copper	●	●	●	●	●	●	●	●	●	●
UB1530	Conical Nozzle	12.0	0.9mm	Copper	●	●	●	●	●	●	●	●	●	●
UB1531	Tapered Nozzle	10.6	0.9mm	Copper	●	●	●	●	●	●	●	●	●	●
UB1532	Bottle Nozzle	12.8	0.9mm	Copper	●	●	●	●	●	●	●	●	●	●
UB1533	Spot Welding Nozzle	16.2	0.9mm	Copper	●	●	●	●	●	●	●	●	●	●
UB2415	Cylindrical Nozzle	17.2	1.4mm	Copper	●	●	●	●	●	●	●	●	●	●
UB2416	Conical Nozzle	12.6	1.4mm	Copper	●	●	●	●	●	●	●	●	●	●
UB2417	Tapered Nozzle	10.0	1.4mm	Copper	●	●	●	●	●	●	●	●	●	●
UC2415	Eco Nozzle Cylindrical	17.2	1.4mm	Brass	●	●	●	●	●	●	●	●	●	●
UC2416	Eco Nozzle Conical	12.6	1.4mm	Brass	●	●	●	●	●	●	●	●	●	●
UC2417	Eco Nozzle Tapered	10.0	1.4mm	Brass	●	●	●	●	●	●	●	●	●	●
UB2507	Cylindrical Nozzle	18.5	1.5mm	Copper	●	●	●	●	●	●	●	●	●	●
UB2508	Conical Nozzle	15.0	1.5mm	Copper	●	●	●	●	●	●	●	●	●	●
UB2509	Tapered Nozzle	12.0	1.5mm	Copper	●	●	●	●	●	●	●	●	●	●
UB2510	Bottle Nozzle	14.5	1.5mm	Copper	●	●	●	●	●	●	●	●	●	●
UB2511	Spot Welding Nozzle	18.0	1.5mm	Copper	●	●	●	●	●	●	●	●	●	●
UB3615	Cylindrical Nozzle	19.0	2.25mm	Copper	●	●	●	●	●	●	●	●	●	●
UB3616	Conical Nozzle	16.1	2.25mm	Copper	●	●	●	●	●	●	●	●	●	●
UB3617	Tapered Nozzle	12.0	2.25mm	Copper	●	●	●	●	●	●	●	●	●	●
UB5027	Cylindrical Nozzle	19.0	2.25mm	Copper	●	●	●	●	●	●	●	●	●	●
UB5028	Conical Nozzle	16.0	2.25mm	Copper	●	●	●	●	●	●	●	●	●	●
UB5028HD	Conical Nozzle	16.0	3.2mm	Copper	●	●	●	●	●	●	●	●	●	●
UB5029	Tapered Nozzle	14.0	2.25mm	Copper	●	●	●	●	●	●	●	●	●	●
UB6528	Conical Nozzle	17.0	2.6mm	Copper	●	●	●	●	●	●	●	●	●	●

● Standard wear part range ● Torch package standard wear part set-up

Wear Parts



BZL Nozzles Adaptors

Part No.	Description	Material	PG150A	PG240A	PG250A	PG360A (PG380A, Aug)	PG380A	PG240W	PG401W	PG501W (PG501W Aug)	PG555W	PG605W
UB6515	Nozzle Adaptor	Brass										

BZL Contact Tips

Part No.	Description	Material	Wire Size mm-inch	PG150A	PG240A	PG250A	PG360A (PG380A, Aug)	PG380A	PG240W	PG401W	PG501W (PG501W Aug)	PG555W	PG605W
M6 x 25													
UB1527-06	Contact Tip	Ecu	0.6-0.023										
UB1527-08	Contact Tip	Ecu	0.8-0.030										
UB1527-09	Contact Tip	Ecu	0.9-0.035										
UB1527-10	Contact Tip	Ecu	1.0-0.040										
UB1527-12	Contact Tip	Ecu	1.2-0.045										
UB1527-08A	Contact Tip	Ecu	0.8-0.030										
UB1527-09A	Contact Tip	Ecu	0.9-0.035										
UB1527-10A	Contact Tip	Ecu	1.0-0.040										

M6 x 28

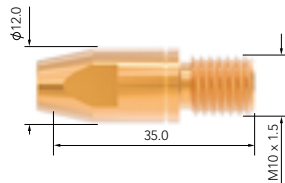
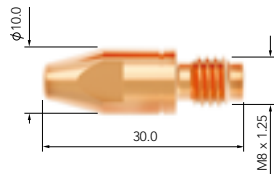
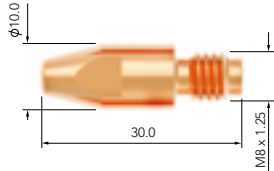
UB2504-06	Contact Tip	Ecu	0.6-0.023										
UB2504-08	Contact Tip	Ecu	0.8-0.030										
UB2504-09	Contact Tip	Ecu	0.9-0.035										
UB2504-10	Contact Tip	Ecu	1.0-0.040										
UB2504-12	Contact Tip	Ecu	1.2-0.045										
UB2504-14	Contact Tip	Ecu	1.4-0.055										
UB2504-16	Contact Tip	Ecu	1.6-0.063										
UB2504-08A	Contact Tip	Ecu	0.8-0.030										
UB2504-10A	Contact Tip	Ecu	1.0-0.040										
UB2504-12A	Contact Tip	Ecu	1.2-0.045										
UB2504-16A	Contact Tip	Ecu	1.6-0.063										

M6 x 28

UB2505-08	Contact Tip	CuCrZr	0.8-0.030										
UB2505-09	Contact Tip	CuCrZr	0.9-0.035										
UB2505-10	Contact Tip	CuCrZr	1.0-0.040										
UB2505-12	Contact Tip	CuCrZr	1.2-0.045										
UB2505-16	Contact Tip	CuCrZr	1.6-0.063										
UB2505-10A	Contact Tip	CuCrZr	1.0-0.040										
UB2505-12A	Contact Tip	CuCrZr	1.2-0.045										
UB2505-16A	Contact Tip	CuCrZr	1.6-0.063										

● Standard wear part range ● Torch package standard wear part set-up

Wear Parts

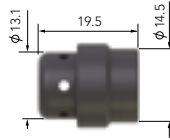


BZL Contact Tips

Part No.	Description	Material	Wire Size mm-inch	PG150A	PG240A	PG250A	PG360A (PG380A Alloy)	PG380A	PG240W	PG401W	PG501W (PG501W Alloy)	PG555W	PG605W
M8 x 30													
UB4014-08	Contact Tip	Ecu	0.8-0.030	●	●	●	●	●	●	●	●	●	●
UB4014-09	Contact Tip	Ecu	0.9-0.035	●	●	●	●	●	●	●	●	●	●
UB4014-10	Contact Tip	Ecu	1.0-0.040	●	●	●	●	●	●	●	●	●	●
UB4014-12	Contact Tip	Ecu	1.2-0.045	●	●	●	●	●	●	●	●	●	●
UB4014-14	Contact Tip	Ecu	1.4-0.055	●	●	●	●	●	●	●	●	●	●
UB4014-16	Contact Tip	Ecu	1.6-0.063	●	●	●	●	●	●	●	●	●	●
UB4014-20	Contact Tip	Ecu	2.0-0.080	●	●	●	●	●	●	●	●	●	●
UB4014-24	Contact Tip	Ecu	2.4-0.095	●	●	●	●	●	●	●	●	●	●
UB4014-10A	Contact Tip	Ecu	1.0-0.040	●	●	●	●	●	●	●	●	●	●
UB4014-12A	Contact Tip	Ecu	1.2-0.045	●	●	●	●	●	●	●	●	●	●
UB4014-16A	Contact Tip	Ecu	1.6-0.063	●	●	●	●	●	●	●	●	●	●
M8 x 30													
UB4015-08	Contact Tip	CuCrZr	0.8-0.030	●	●	●	●	●	●	●	●	●	●
UB4015-09	Contact Tip	CuCrZr	0.9-0.035	●	●	●	●	●	●	●	●	●	●
UB4015-10	Contact Tip	CuCrZr	1.0-0.040	●	●	●	●	●	●	●	●	●	●
UB4015-12	Contact Tip	CuCrZr	1.2-0.045	●	●	●	●	●	●	●	●	●	●
UB4015-14	Contact Tip	CuCrZr	1.4-0.055	●	●	●	●	●	●	●	●	●	●
UB4015-16	Contact Tip	CuCrZr	1.6-0.063	●	●	●	●	●	●	●	●	●	●
UB4015-24	Contact Tip	CuCrZr	2.4-0.095	●	●	●	●	●	●	●	●	●	●
UB4015-10A	Contact Tip	CuCrZr	1.0-0.040	●	●	●	●	●	●	●	●	●	●
UB4015-12A	Contact Tip	CuCrZr	1.2-0.045	●	●	●	●	●	●	●	●	●	●
UB4015-16A	Contact Tip	CuCrZr	1.6-0.063	●	●	●	●	●	●	●	●	●	●
UB4015-24A	Contact Tip	CuCrZr	2.4-0.095	●	●	●	●	●	●	●	●	●	●
M10 x 35													
UB6015-10	Contact Tip	CuCrZr	1.0-0.040	●	●	●	●	●	●	●	●	●	●
UB6015-12	Contact Tip	CuCrZr	1.2-0.045	●	●	●	●	●	●	●	●	●	●
UB6015-14	Contact Tip	CuCrZr	1.4-0.055	●	●	●	●	●	●	●	●	●	●
UB6015-16	Contact Tip	CuCrZr	1.6-0.063	●	●	●	●	●	●	●	●	●	●
UB6015-20	Contact Tip	CuCrZr	2.0-0.080	●	●	●	●	●	●	●	●	●	●
UB6015-24	Contact Tip	CuCrZr	2.4-0.095	●	●	●	●	●	●	●	●	●	●

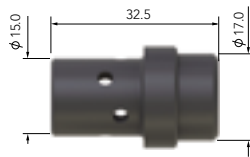
● Standard wear part range ● Torch package standard wear part set-up

Wear Parts

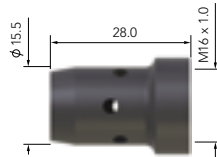


BZL Diffusers

Part No.	Description	Colour	Material	PG150A	PG240A	PG250A	PG360A (PG380A Alloy)	PG380A	PG240W	PG401W	PG501W (PG501W Alloy)	PG555W	PG605W
UB2405B	Diffuser	Black	DMC3	●	●	●	●	●	●	●	●	●	●
UB2405C	Diffuser	White	Ceramic	●	●	●	●	●	●	●	●	●	●
UB2405W	Diffuser	White	DMC3	●	●	●	●	●	●	●	●	●	●
UB2405S	Diffuser	Red	Silicon	●	●	●	●	●	●	●	●	●	●



UB3605B	Diffuser	Black	DMC3	●	●	●	●	●	●	●	●	●	●
UB3605C	Diffuser	White	Ceramic	●	●	●	●	●	●	●	●	●	●
UB3605H	Diffuser, High Performance	Black	HPP	●	●	●	●	●	●	●	●	●	●
UB3605W	Diffuser	White	DMC3	●	●	●	●	●	●	●	●	●	●








UB5005B	Diffuser	Black	DMC3	●	●	●	●	●	●	●	●	●	●
UB5005C	Diffuser	White	Ceramic	●	●	●	●	●	●	●	●	●	●
UB5005H	Diffuser, High Performance	Black	HPP	●	●	●	●	●	●	●	●	●	●
UB5005W	Diffuser	White	DMC3	●	●	●	●	●	●	●	●	●	●



UB6505H	Diffuser, High Temperature	Black	HPP	●	●	●	●	●	●	●	●	●	●
---------	----------------------------	-------	-----	---	---	---	---	---	---	---	---	---	---

Wear Parts





BZL Liners

Part No.	Length	Description	Nipple	Wire Size mm	PG150A	PG240A	PG250A	PG360A (PG380W Aug)	PG380A	PG240W	PG401W	PG501W (PG501W Aug)	PG555W	PG605W
														
UB1535-30	3.4mt	Steel Liner x 3mt	Moulded Nipple	0.6-0.9	●	●	●	●	●	●	●	●	●	●
UB1535-40	4.4mt	Steel Liner x 4mt	Moulded Nipple	0.6-0.9	●	●	●	●	●	●	●	●	●	●
UB1535-50	5.4mt	Steel Liner x 5mt	Moulded Nipple	0.6-0.9	●	●	●	●	●	●	●	●	●	●
														
UB1535-30B	3.4mt	Steel Liner x 3mt	Brass Nipple	0.6-0.9	●	●	●	●	●	●	●	●	●	●
UB1535-40B	4.4mt	Steel Liner x 4mt	Brass Nipple	0.6-0.9	●	●	●	●	●	●	●	●	●	●
UB1535-50B	5.4mt	Steel Liner x 5mt	Brass Nipple	0.6-0.9	●	●	●	●	●	●	●	●	●	●
														
UB1536-30	3.6mt	Teflon Liner x 3mt	Teflon Brass Nipple	0.6-0.9	●	●	●	●	●	●	●	●	●	●
UB1536-40	4.6mt	Teflon Liner x 4mt	Teflon Brass Nipple	0.6-0.9	●	●	●	●	●	●	●	●	●	●
UB1536-50	5.6mt	Teflon Liner x 5mt	Teflon Brass Nipple	0.6-0.9	●	●	●	●	●	●	●	●	●	●
UNE1564	0.3mt	Optional Bronze Neck Liner	Teflon Brass Nipple	0.8-1.2	●	●	●	●	●	●	●	●	●	●
														
UB1564-30	3.6mt	Polyamide / Brass Liner x 3mt, 4.0mm O/D	Brass Nipple	0.8-1.2	●	●	●	●	●	●	●	●	●	●
UB1564-40	4.6mt	Polyamide / Brass Liner x 4mt, 4.0mm O/D	Brass Nipple	0.8-1.2	●	●	●	●	●	●	●	●	●	●
UB1564-50	5.6mt	Polyamide / Brass Liner x 5mt, 4.0mm O/D	Brass Nipple	0.8-1.2	●	●	●	●	●	●	●	●	●	●
														
UB2524-30	3.4mt	Steel Liner x 3mt	Moulded Nipple	1.0-1.2	●	●	●	●	●	●	●	●	●	●
UB2524-40	4.4mt	Steel Liner x 4mt	Moulded Nipple	1.0-1.2	●	●	●	●	●	●	●	●	●	●
UB2524-50	5.4mt	Steel Liner x 5mt	Moulded Nipple	1.0-1.2	●	●	●	●	●	●	●	●	●	●

● Standard wear part range ● Torch package standard wear part set-up

Wear Parts






BZL Liners

Part No.	Length	Description	Nipple	Wire Size mm	PG150A	PG240A	PG250A	PG360A (PG380A, Aukey)	PG380A	PG240W	PG401W	PG501W (PG501W Aukey)	PG555W	PG605W
														
UB2524-30B	3.4mt	Steel Liner x 3mt	Brass Nipple	1.0-1.2	●	●	●	●	●	●	●	●	●	●
UB2524-40B	4.4mt	Steel Liner x 4mt	Brass Nipple	1.0-1.2	●	●	●	●	●	●	●	●	●	●
UB2524-50B	5.4mt	Steel Liner x 5mt	Brass Nipple	1.0-1.2	●	●	●	●	●	●	●	●	●	●
														
UB2513-30	3.6mt	Teflon Liner x 3mt	Teflon Brass Nipple	1.0-1.2	●	●	●	●	●	●	●	●	●	●
UB2513-40	4.6mt	Teflon Liner x 4mt	Teflon Brass Nipple	1.0-1.2	●	●	●	●	●	●	●	●	●	●
UB2513-50	5.6mt	Teflon Liner x 5mt	Teflon Brass Nipple	1.0-1.2	●	●	●	●	●	●	●	●	●	●
UNE1564	0.3mt	Optional Bronze Neck Liner	Brass Nipple	0.8-1.2	●	●	●	●	●	●	●	●	●	●
														
UB2564-30	3.6mt	Polyamide / Brass Liner x 3mt, 4.7mm O/D	Brass Nipple	1.2-1.6	●	●	●	●	●	●	●	●	●	●
UB2564-40	4.6mt	Polyamide / Brass Liner x 4mt, 4.7mm O/D	Brass Nipple	1.2-1.6	●	●	●	●	●	●	●	●	●	●
UB2564-50	5.6mt	Polyamide / Brass Liner x 5mt, 4.7mm O/D	Brass Nipple	1.2-1.6	●	●	●	●	●	●	●	●	●	●
														
UB3631-30	3.4mt	Steel Liner x 3mt	Moulded Nipple	1.6	●	●	●	●	●	●	●	●	●	●
UB3631-40	4.4mt	Steel Liner x 4mt	Moulded Nipple	1.6	●	●	●	●	●	●	●	●	●	●
UB3631-50	5.4mt	Steel Liner x 5mt	Moulded Nipple	1.6	●	●	●	●	●	●	●	●	●	●

● Standard wear part range ● Torch package standard wear part set-up

Wear Parts





BZL Liners

Part No.	Length	Description	Nipple	Wire Size mm	PG150A	PG240A	PG250A	PG360A (PG380A Alloy)	PG380A	PG240W	PG401W	PG501W (PG501W Alloy)	PG555W	PG605W
														
UB3631-30B	3.4mt	Steel Liner x 3mt	Brass Nipple	1.6-2.0	●	●	●	●	●	●	●	●	●	●
UB3631-40B	4.4mt	Steel Liner x 4mt	Brass Nipple	1.6-2.0	●	●	●	●	●	●	●	●	●	●
UB3631-50B	5.4mt	Steel Liner x 5mt	Brass Nipple	1.6-2.0	●	●	●	●	●	●	●	●	●	●
 														
UB3626-30	3.6mt	Teflon Liner x 3mt	Teflon Brass Nipple	1.6-2.0	●	●	●	●	●	●	●	●	●	●
UB3626-40	4.6mt	Teflon Liner x 4mt	Teflon Brass Nipple	1.6-2.0	●	●	●	●	●	●	●	●	●	●
UB3626-50	5.6mt	Teflon Liner x 5mt	Teflon Brass Nipple	1.6-2.0	●	●	●	●	●	●	●	●	●	●
UNE2564	0.3mt	Optional Bronze Neck Liner	Brass Nipple	1.2-1.6	●	●	●	●	●	●	●	●	●	●
														
UB3564-30	3.6mt	Polyamide / Brass Liner x 3mt, 4.7mm O/D	Brass Nipple	1.6-2.0	●	●	●	●	●	●	●	●	●	●
UB3564-40	4.6mt	Polyamide / Brass Liner x 4mt, 4.7mm O/D	Brass Nipple	1.6-2.0	●	●	●	●	●	●	●	●	●	●
UB3564-50	5.6mt	Polyamide / Brass Liner x 5mt, 4.7mm O/D	Brass Nipple	1.6-2.0	●	●	●	●	●	●	●	●	●	●
														
UB4631-30B	3.5mt	Steel Liner x 3mt	Brass Nipple	2.0-2.4	●	●	●	●	●	●	●	●	●	●
UB4631-40B	4.5mt	Steel Liner x 4mt	Brass Nipple	2.0-2.4	●	●	●	●	●	●	●	●	●	●
UB4631-50B	5.5mt	Steel Liner x 5mt	Brass Nipple	2.0-2.4	●	●	●	●	●	●	●	●	●	●

● Standard wear part range ● Torch package standard wear part set-up

Wear Parts

BZL Liners

Part No.	Length	Description	Nipple	Wire Size mm	PG150A	PG240A	PG250A	PG360A (PG380A, Auger)	PG380A	PG240W	PG401W	PG501W (PG501W Auger)	PG555W	PG605W
														
UB5033-30	3.5mt	Steel Liner x 3mt	Moulded Nipple	1.0-1.2	●	●	●	●	●	●	●	●	●	●
UB5033-40	4.5mt	Steel Liner x 4mt	Moulded Nipple	1.0-1.2	●	●	●	●	●	●	●	●	●	●
UB5033-50	5.5mt	Steel Liner x 5mt	Moulded Nipple	1.0-1.2	●	●	●	●	●	●	●	●	●	●
														
UB5033-30B	3.5mt	Steel Liner x 3mt	Brass Nipple	1.0-1.2	●	●	●	●	●	●	●	●	●	●
UB5033-40B	4.5mt	Steel Liner x 4mt	Brass Nipple	1.0-1.2	●	●	●	●	●	●	●	●	●	●
UB5033-50B	5.5mt	Steel Liner x 5mt	Brass Nipple	1.0-1.2	●	●	●	●	●	●	●	●	●	●
UB5033-80B	8.5mt	Steel Liner x 8mt	Brass Nipple	1.0-1.2	●	●	●	●	●	●	●	●	●	●
														
UB5034-30	3.5mt	Steel Liner x 3mt	Moulded Nipple	1.2-1.6	●	●	●	●	●	●	●	●	●	●
UB5034-40	4.5mt	Steel Liner x 4mt	Moulded Nipple	1.2-1.6	●	●	●	●	●	●	●	●	●	●
UB5034-50	5.5mt	Steel Liner x 5mt	Moulded Nipple	1.2-1.6	●	●	●	●	●	●	●	●	●	●
														
UB5034-30B	3.5mt	Steel Liner x 3mt	Brass Nipple	1.2-1.6	●	●	●	●	●	●	●	●	●	●
UB5034-40B	4.5mt	Steel Liner x 4mt	Brass Nipple	1.2-1.6	●	●	●	●	●	●	●	●	●	●
UB5034-50B	5.5mt	Steel Liner x 5mt	Brass Nipple	1.2-1.6	●	●	●	●	●	●	●	●	●	●
UB5034-80B	8.5mt	Steel Liner x 8mt	Brass Nipple	1.2-1.6	●	●	●	●	●	●	●	●	●	●

● Standard wear part range ● Torch package standard wear part set-up

Customized Branding

The Progrip series of Mig torches are offered in black and grey as standard.

Subject to minimum order quantities, handles are available in various colours and styles which can be built to order.

Standard Label Size: 38x10mm



PRO-BLK/GRY

Customized Handle Options

Grip Handle - Optional Upgrade Label Size: 38x10mm



PRO-BLK/BLK



PRO-BLU/BLK



PRO-BLK/RED

Other Colour Options
Available on Request

Note:
Minimum Order Quantities Apply

Customized Trigger Options



PRO-GRY

Other Colour Options
Available on Request

Note:
Minimum Order Quantities Apply

To discuss options available please contact us on info@uniarc.com.cn
Colours maybe restricted dependent on market

Customized Handle Label Options

Enhance your product image further with brandable handle stickers.

Template



Example



Note: Minimum Order Quantities Apply

Packaging Options

Products are supplied in plain white boxes as standard.

Boxes and bespoke packaging are available subject to minimum order quantities and additional costs.



Welding & Cutting Torch Technology

JINAN UNIARC WELDING TECHNOLOGY CO., LTD

13A Zhangjin Comprehensive Bonded Zone
33688, Jing Shi Dong Road
Jinan Area of China (Shandong) Pilot Free Trade Zone
Jinan 250102, P.R. China

Tel: +86 531 88239823

Website: www.uniarctorchology.com

Email: info@uniarctorchology.com

MPU001 / V.2024.03