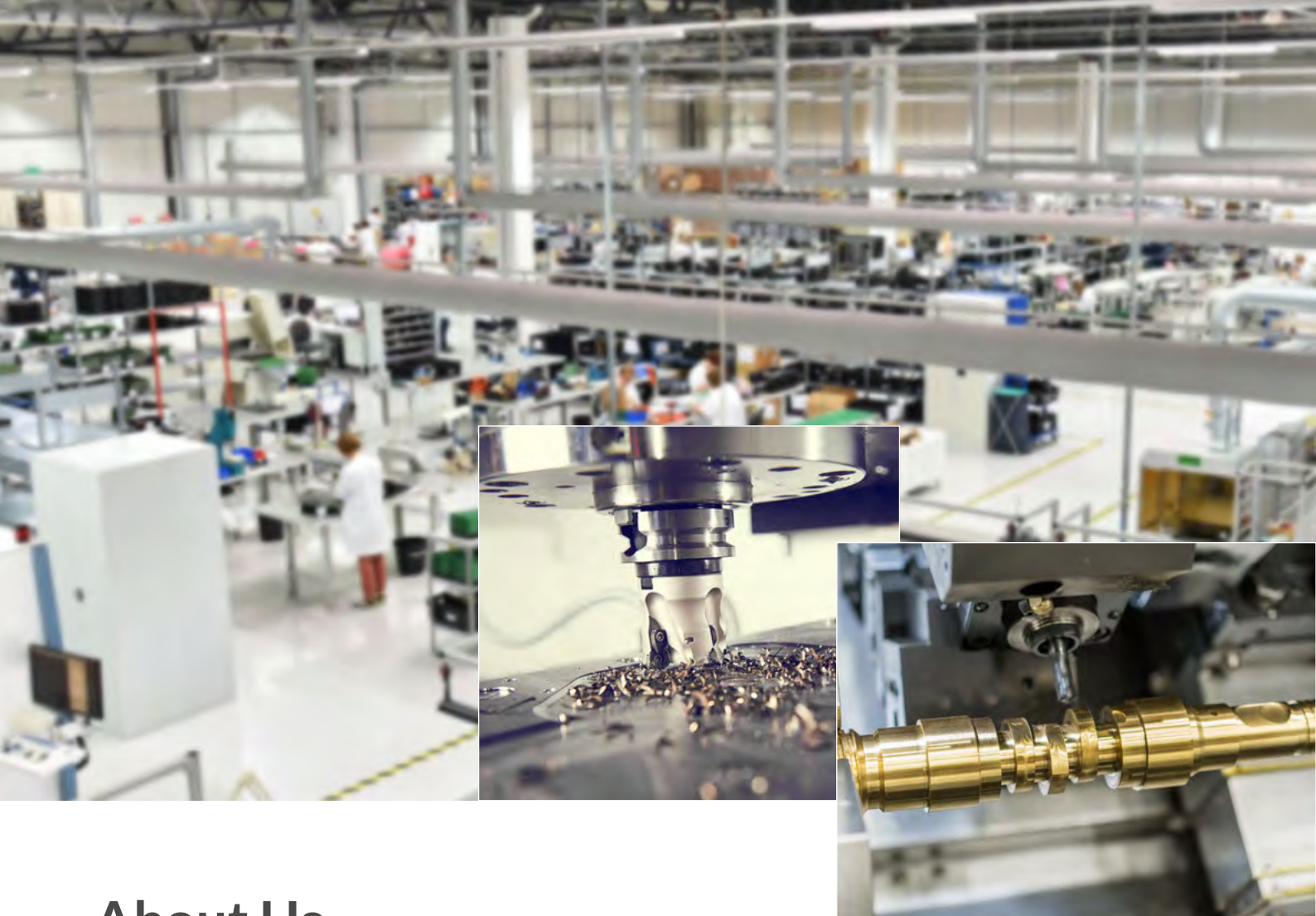




Welding & Cutting Torch Technology

Product Catalogue

BZL Progrip Series



About Us

Uniarc is part of a group of companies specializing in the production of Welding and Cutting torches.

With over 40 years experience, the group is positioned as a global leader at the heart of the welding torch industry.

Originally established in the United Kingdom in the 1980's, the company is now a fully-fledged, vertically integrated Chinese product innovator and manufacturer.

Our customers span a full cross section of the industry, ranging from general distribution to leading global original equipment manufacturers.

Our products are used in a broad cross-section of industrial sectors ranging from auto body repair to ship building.

Whether you need a standard off the shelf product or a customized branded option with your own colours, logos and packaging we have a one stop solution for your requirements.

Our team are here to help, contact us today if you need anymore information.



find out more www.uniarc.com.cn

Ranges

BZL Mig/Mag Torch Series

BZL Progrip Lite Mig/Mag Torch Range	1
BZL Progrip Mig/Mag Torch Range	9

Contents

Features Focus	2
Range Overview	3
<hr/>	
Torch Model	
Progrip Lite 150A	4
Progrip Lite 240A	5
Progrip Lite 250A	6
Progrip Lite 360A	7
<hr/>	
Wear Parts	
BZL Nozzles	28
BZL Nozzle Adaptors	29
BZL Contact Tips	29
BZL Tip Adaptors	31
BZL Diffusers	32
BZL Liners	33
<hr/>	
Customized Branding Options	
Handle Options	37
Trigger Options	38
Label Options	39

Air-Cooled

Auto-Series

BZL Progrip Lites BZL Air-Cooled torches offered in a neutral brand, with the option to customize your own colours and packaging giving your brand a presence that truly stands out.

Consumable Parts

All wear and spare parts are manufactured to the same specification as the OEM and are fully interchangeable.

Medium Ergo Trigger Assembly

Rapid field servicing ensured by a simple "plug and play" system. Switches can be exchanged in 5 seconds without the use of tools.

Knuckle Joint and Cable Support

Small movements of the handle and neck are possible independent of the cable assembly. A moulded polymer cable support increases flexibility and electrode support.

Swan Necks

Manufactured to the same specification as the OEM.

Ergo Handle

A patented screwless design combines the ultimate in balance, positioning and ergonomics.

Torch handles disassemble in 5 seconds for rapid fault analysis. Top and bottom handle soft grips ensure all-day welder comfort.



Spring Pins

Fitted with unbreakable spring loaded gun plug body pins.



Cable Systems

Lite series cable sets offer a 30-40% weight saving at equivalent performance levels.

The outer jacket is constructed from cross-linked polymers providing a tear proof outer with a burn threshold of 375°C.

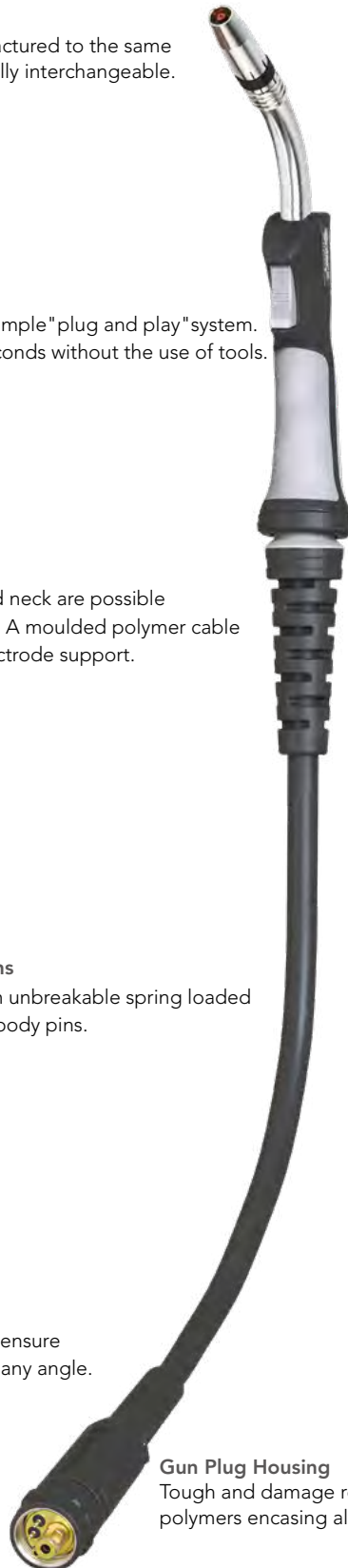


Rear Cable Support

Extra length cable support systems ensure smooth and consistent wire feed at any angle.

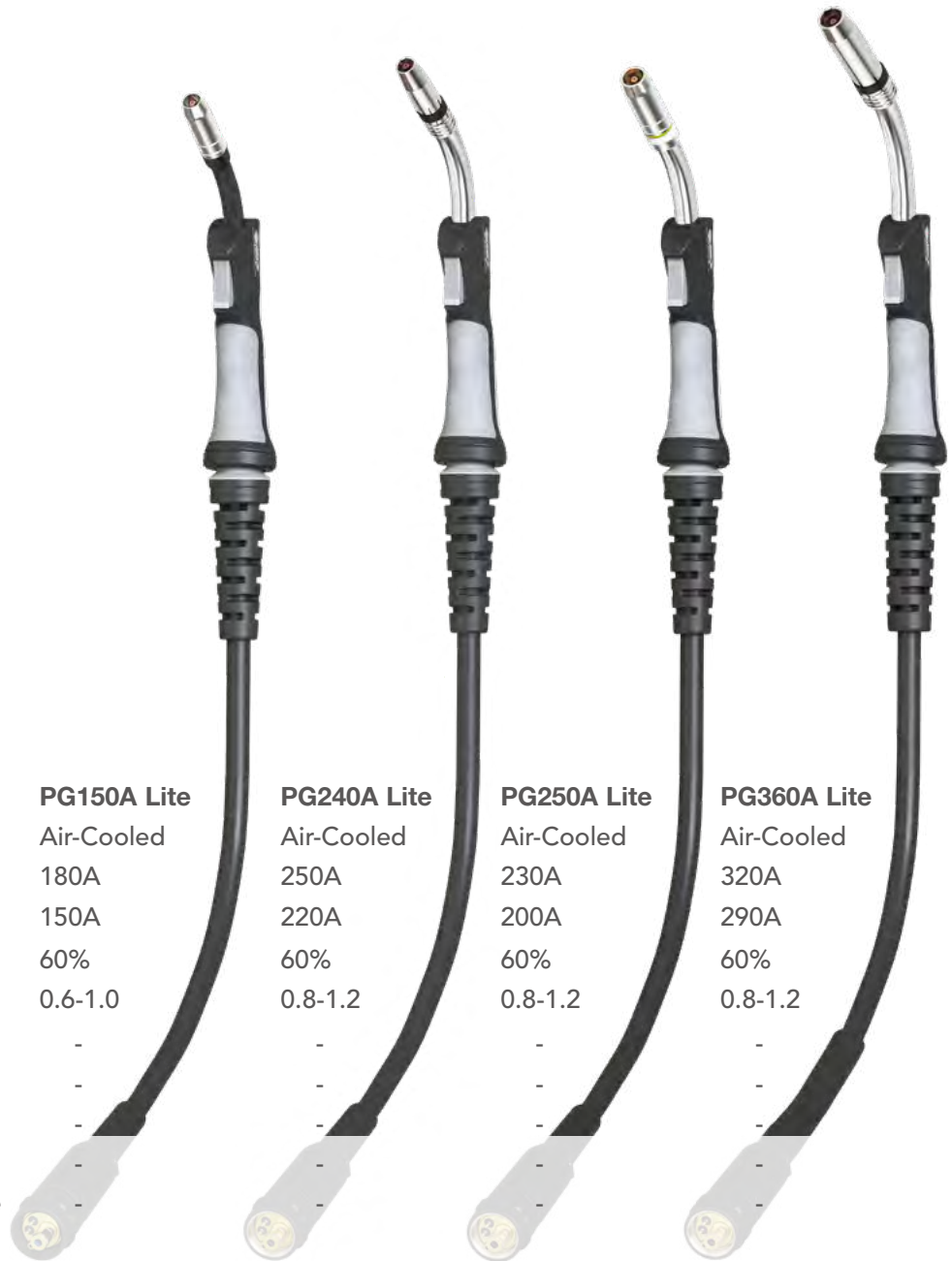
Gun Plug Housing

Tough and damage resistant, housings and nuts are formed in robust glass-reinforced polymers encasing all conductive parts in accordance with EN60974-7.



BZL Progrip Lite Mig / Mag Air-Cooled Series

Ratings: 150 Amp to 290 Amp, Mixed Gas M21



Technical Data

Cooling Method

Rating: CO₂

Rating: Mixed Gas M21

Duty Cycle:

Wire Size:

Minimum Water Flow

Minimum Water Inlet Pressure

Minimum Cooling Requirements

Maximum Water Inlet Pressure

Maximum Water Inlet Temperature

PG150A Lite

Air-Cooled

180A

150A

60%

0.6-1.0

-

-

-

-

-

PG240A Lite

Air-Cooled

250A

220A

60%

0.8-1.2

-

-

-

-

-

PG250A Lite

Air-Cooled

230A

200A

60%

0.8-1.2

-

-

-

-

-

PG360A Lite

Air-Cooled

320A

290A

60%

0.8-1.2

-

-

-

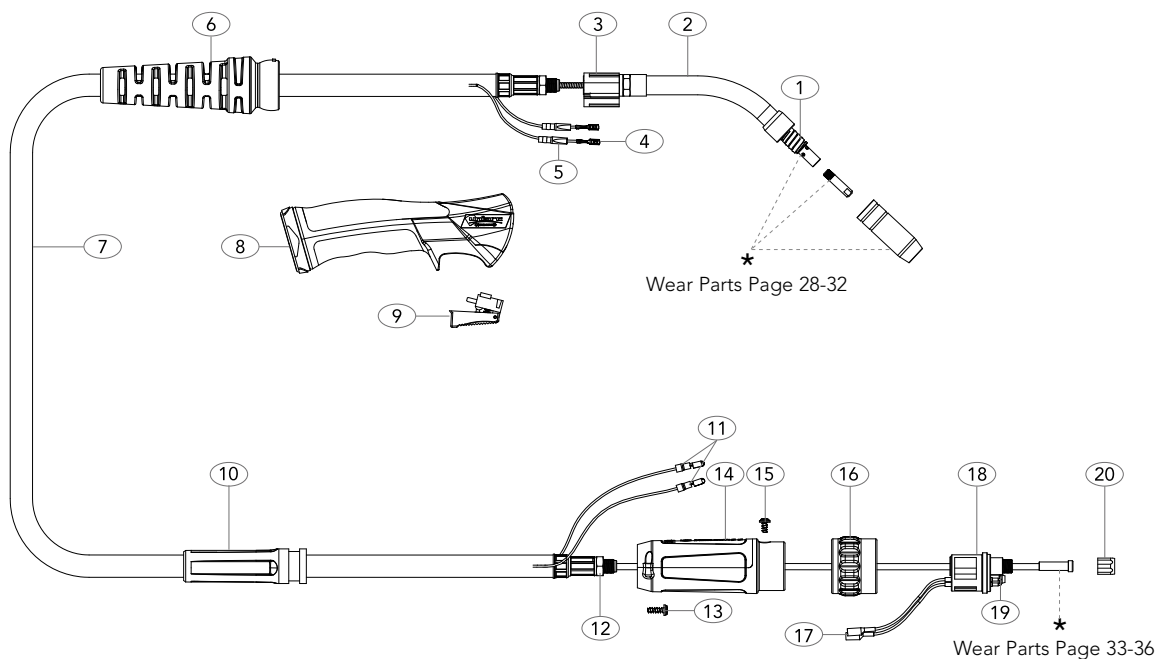
-

-

Order Codes	3mt	UDU1500-30ER	UDU2400-30ER	UDU2500-30ER	UDU3600-30ER
	4mt	UDU1500-40ER	UDU2400-40ER	UDU2500-40ER	UDU3600-40ER
	5mt	UDU1500-50ER	UDU2400-50ER	UDU2500-50ER	UDU3600-50ER

PG150A Progrid Lite Air-Cooled Mig Welding Torch

Rating: 180A CO₂ 150A mixed gas M21, EN60974-7 @ 60% duty cycle. 0.6 to 1.0mm wires



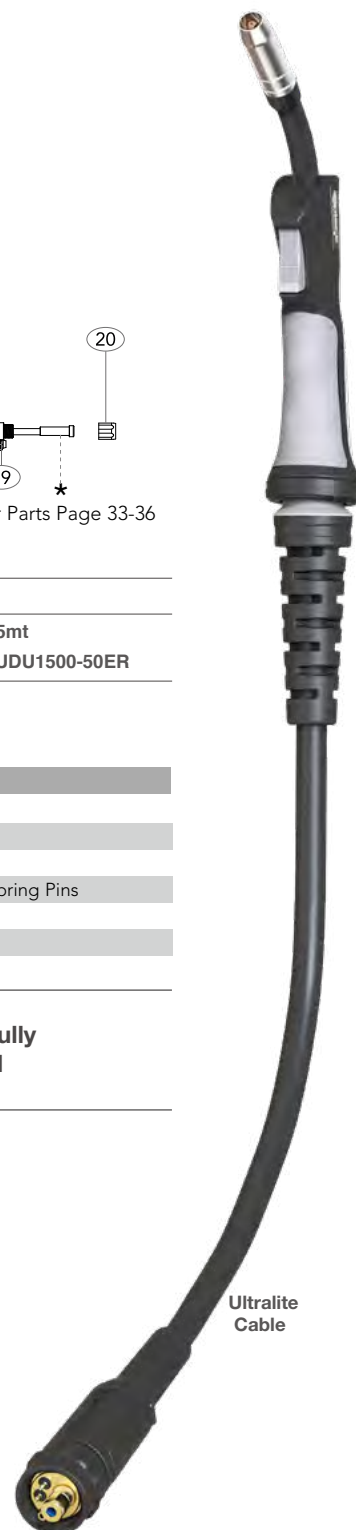
MODEL

Description	Part Number		
Progrid Lite Torch Package	3mt UDU1500-30ER	4mt UDU1500-40ER	5mt UDU1500-50ER

SPARE PARTS

Part Number	Description	Part Number	Description
1 UB1504	Shroud Spring	15 UBL1541	Gun Plug Screw
2 UB1501	Swan Neck Assembly	16 UC1519/P	Gun Plug Nut
3 UG1515	Ergo Handle Location Body	17 UB1523	Gun Plug Terminal Female
4 UB1521	Cable Terminal	18 UC1528	Hybrid Gun Plug Body c/w Spring Pins
5 UB1521-C	Cable Terminal Cover	19 UB1524	Gun Plug 'O' Ring
6 UG8015	Handle Cable Support c/w Ball Joint	20 UB1525	Liner Nut
7 UDU1517-30	Lite Cable Assembly x 3mt		
UDU1517-40	Lite Cable Assembly x 4mt		
UDU1517-50	Lite Cable Assembly x 5mt		
8 UG2514	Ergo Handle Kit c/w Lock Nut		
9 UG2516	Medium / Large Ergo Trigger		
10 UC2841	Cable Support		
11 UB1522	Cable Terminal Male		
12 UB1505	Lock Nut		
13 SCSP1-1	Gun Plug Housing Screw		
14 SC2578/S	Gun Plug Housing c/w Nut		

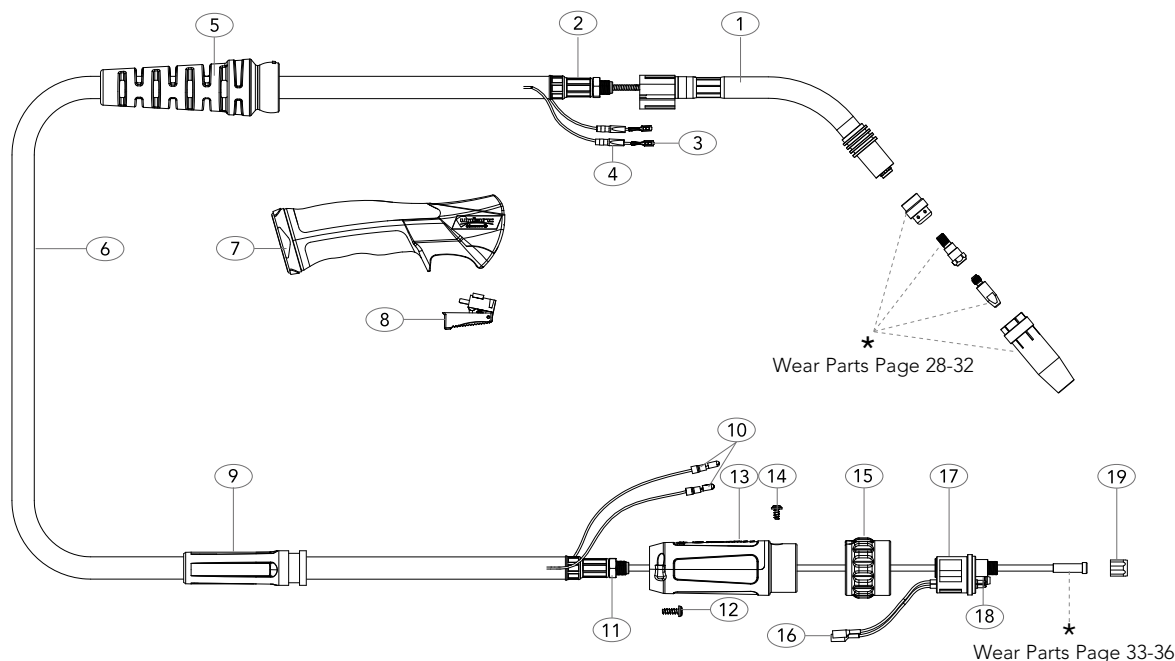
Standard products can be fully
customized and branded



All products conform to EN60974-7, **CE** and are RoHS2, REACH and WEEE compliant

PG240A Progrid Lite Air-Cooled Mig Welding Torch

Rating: 250A CO₂ 220A mixed gas M21, EN60974-7 @ 60% duty cycle. 0.8 to 1.2mm wires



MODEL

Description	Part Number		
Progrid Lite Torch Package	3mt UDU2400-30ER	4mt UDU2400-40ER	5mt UDU2400-50ER

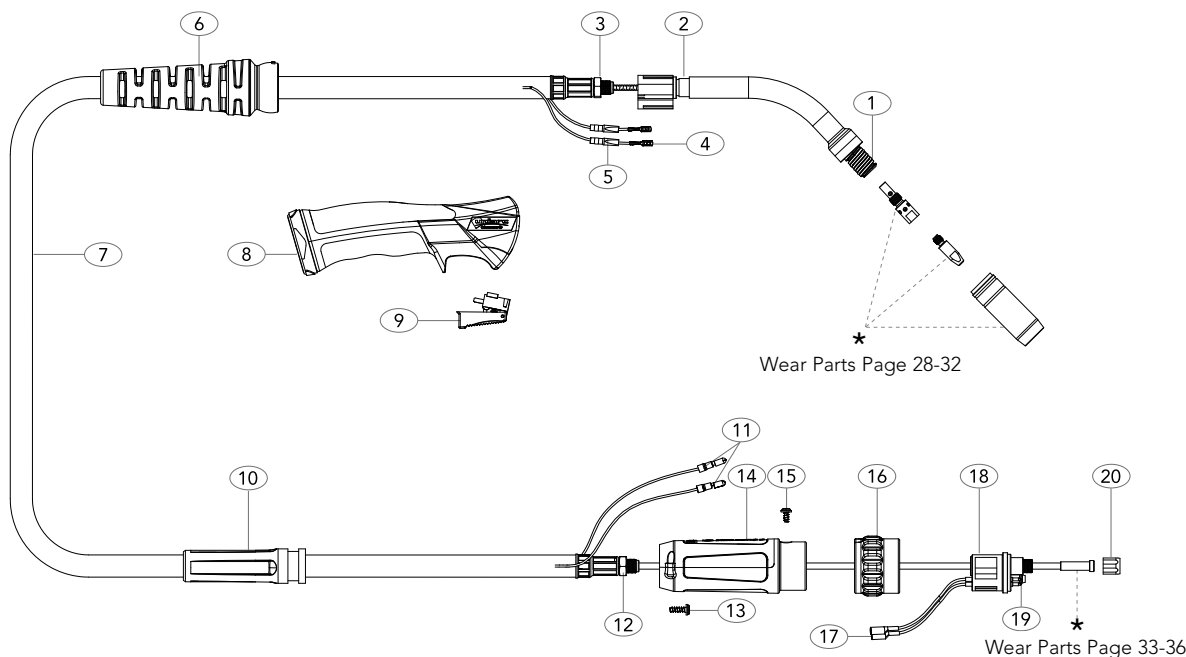
SPARE PARTS

Part Number	Description	Part Number	Description
1 UG2401	Swan Neck Assembly	15 UC1519/S	Gun Plug Nut
2 UG1515	Ergo Handle Location Body	16 UB1523	Gun Plug Terminal Female
3 UB1521	Cable Terminal	17 UC1528	Hybrid Gun Plug Body c/w Spring Pins
4 UB1521-C	Cable Terminal Cover	18 UB1524	Gun Plug 'O' Ring
5 UG8015	Handle Cable Support c/w Ball Joint	19 UB1525	Liner Nut
6 UDU2603-30	Lite Cable Assembly x 3mt		
UDU2603-40	Lite Cable Assembly x 4mt		
UDU2603-50	Lite Cable Assembly x 5mt		
7 UG2514	Ergo Handle Kit c/w Lock Nut		
8 UG2516	Medium / Large Ergo Trigger		
9 UC2841	Cable Support		
10 UB1522	Cable Terminal Male		
11 UB1505	Lock Nut		
12 SCSP1-1	Gun Plug Housing Screw		
13 SC2578/S	Gun Plug Housing c/w Nut		
14 UBL1541	Gun Plug Screw		

**Standard products can be fully
customized and branded**



All products conform to EN60974-7, **CE** and are RoHS2, REACH and WEEE compliant



MODEL

Description	Part Number		
Progrid Lite Torch Package	3mt UDU2500-30ER	4mt UDU2500-40ER	5mt UDU2500-50ER

SPARE PARTS

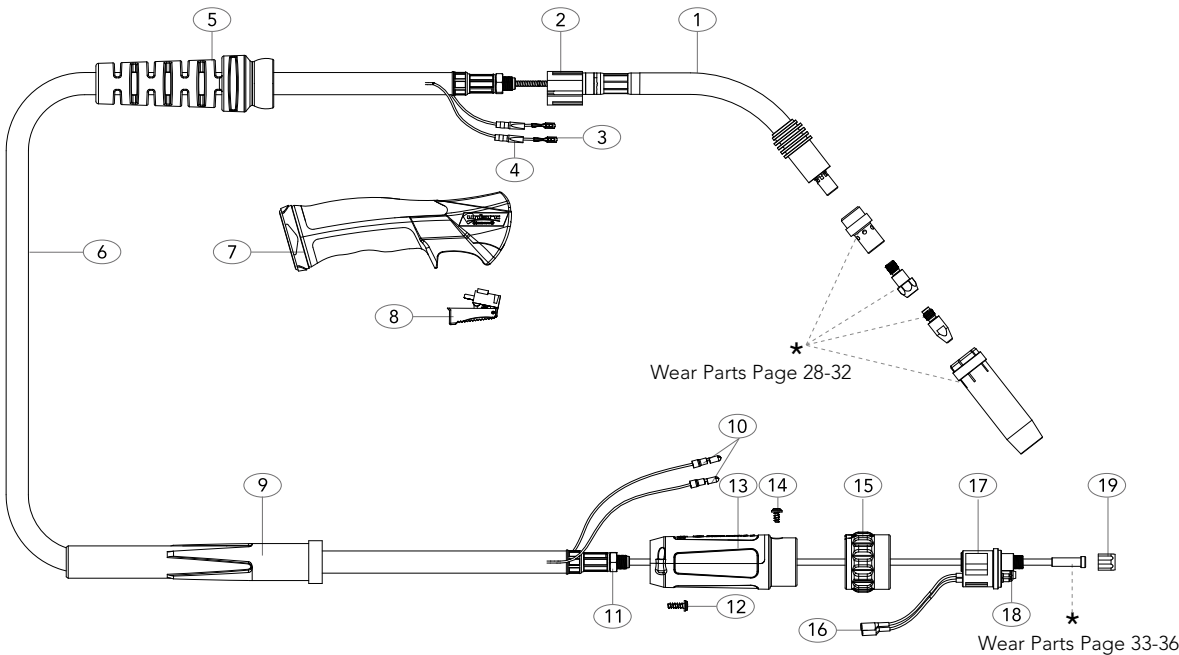
Part Number	Description	Part Number	Description
1 UB2502	Shroud Spring	15 UBL1541	Gun Plug Screw
2 UG2501	Swan Neck Assembly	16 UC1519/S	Gun Plug Nut
3 UG1515	Ergo Handle Location Body	17 UB1523	Gun Plug Terminal Female
4 UB1521	Cable Terminal	18 UC1528	Hybrid Gun Plug Body c/w Spring Pins
5 UB1521-C	Cable Terminal Cover	19 UB1524	Gun Plug 'O' Ring
6 UG8015	Handle Cable Support c/w Ball Joint	20 UB1525	Liner Nut
7 UDU2503-30	Lite Cable Assembly x 3mt		
UDU2503-40	Lite Cable Assembly x 4mt		
UDU2503-50	Lite Cable Assembly x 5mt		
8 UG2514	Ergo Handle Kit c/w Lock Nut		
9 UG2516	Medium / Large Ergo Trigger		
10 UC2841	Cable Support		
11 UB1522	Cable Terminal Male		
12 UB1505	Lock Nut		
13 SCSP1-1	Gun Plug Housing Screw		
14 SC2578/S	Gun Plug Housing c/w Nut		

Standard products can be fully customized and branded

All products conform to EN60974-7, **CE** and are RoHS2, REACH and WEEE compliant

PG360A Progrip Lite Air-Cooled Mig Welding Torch

Rating: 320A CO₂ 320A mixed gas M21, EN60974-7 @ 60% duty cycle. 0.8 to 1.2mm wires



MODEL

Description	Part Number		
Progrip Lite Torch Package	3mt UDU3600-30ER	4mt UDU3600-40ER	5mt UDU3600-50ER

SPARE PARTS

Part Number	Description	Part Number	Description
1	UG3603 Swan Neck Assembly	15	UC1519/S Gun Plug Nut
2	UG1515 Ergo Handle Location Body	16	UB1523 Gun Plug Terminal Female
3	UB1521 Cable Terminal	17	UC1528 Hybrid Gun Plug Body c/w Spring Pins
4	UB1521-C Cable Terminal Cover	18	UB1524 Gun Plug 'O' Ring
5	UG8016 Handle Cable Support c/w Ball Joint	19	UB1525 Liner Nut
6	UDU3609-30 Lite Cable Assembly x 3mt		
	UDU3609-40 Lite Cable Assembly x 4mt		
	UDU3609-50 Lite Cable Assembly x 5mt		
7	UG2514 Ergo Handle Kit c/w Lock Nut		
8	UG2516 Medium / Large Ergo Trigger		
9	UPA3541 Cable Support		
10	UB1522 Cable Terminal Male		
11	UB1505 Lock Nut		
12	SCSP1-1 Gun Plug Housing Screw		
13	SC2578/S Gun Plug Housing c/w Nut		
14	UBL1541 Gun Plug Screw		

Standard products can be fully
customized and branded



All products conform to EN60974-7, **CE** and are RoHS2, REACH and WEEE compliant

Contents

	Features Focus	10
	Range Overview	12
	Torch Model	
Air-Cooled	Progrip PG150A	16
	Progrip PG240A	17
	Progrip PG250A	18
	Progrip PG360A	19
	Progrip PG380A	20
Liquid-Cooled	Progrip PG240W	21
	Progrip PG401W	22
	Progrip PG501W	23
	Progrip PG555W	24
	Progrip PG605W	25
Auto-Series	Progrip PG360A Auto	26
	Progrip PG501W Auto	27
	Wear Parts	
	BZL Nozzles	28
	BZL Nozzle Adaptors	29
	BZL Contact Tips	29
	BZL Tip Adaptors	31
	BZL Diffusers	32
	BZL Liners	33
	Customized Branding Options	
	Handle Options	37
	Trigger Options	39
	Label Options	39

Premium BZL Progrip Air-Cooled torches offered in a neutral brand, with the option to customize your own colours and packaging giving your brand a presence that truly stands out.

Consumable Parts

All wear and spare parts are manufactured to the same specification as the OEM and are fully interchangeable.

Hanger Hook

A "plug and play" option, they encourage the operator to hang the torch off the ground where it is easy to locate.

Medium Ergo Trigger Assembly

Rapid field servicing ensured by a simple "plug and play" system. Switches can be exchanged in 5 seconds without the use of tools.

Knuckle Joint and Cable Support

Small movements of the handle and neck are possible independent of the cable assembly. A moulded polymer cable support increases flexibility and electrode support.



Spring Pins

Fitted with unbreakable spring loaded gun plug body pins.

Rear Cable Support

Extra length cable support systems ensure smooth and consistent wire feed at any angle.

Gun Plug Housing

Tough and damage resistant, housings and nuts are formed in robust glass-reinforced polymers encasing all conductive parts in accordance with EN60974-7.

Swan Necks

Manufactured to the same specification as the OEM.

Ergo Handle

A patented screwless design combines the ultimate in balance, positioning and ergonomics.

Torch handles disassemble in 5 seconds for rapid fault analysis. Top and bottom handle soft grips ensure all-day welder comfort.



Duraflex Cable Systems

Air-Cooled cable assemblies offer outstanding flexibility with the highest heat and abrasion resistance of any known cable.

The outer jacket is constructed from cross-linked polymers providing a tear proof outer with a burn threshold of 375°C.



BZL Progrip Mig / Mag Liquid-Cooled Series

Features Focus



Premium BZL Progrip Liquid-Cooled torches offered in a neutral brand, with the option to customize your own colours and packaging giving your brand a presence that truly stands out.

Consumable Parts

All wear and spare parts are manufactured to the same specification as the OEM and are fully interchangeable.

Hanger Hook

A "plug and play" option, they encourage the operator to hang the torch off the ground where it is easy to locate.

Medium Ergo Trigger Assembly

Rapid field servicing ensured by a simple "plug and play" system. Switches can be exchanged in 5 seconds without the use of tools.

Knuckle Joint and Cable Support

Small movements of the handle and neck are possible independent of the cable assembly. A moulded polymer cable support increases flexibility and electrode support.

Swan Necks

Manufactured to the same specification as the OEM.

Ergo Handle

Handle weight has been reduced wherever possible, which when combined with the correct ratio of cable support length and stiffness, provides the perfect balance between user comfort and excellent wire feed performance.

Top and bottom handle soft grips ensure all day welder comfort.



Hydroflex Cable Systems

Liquid-Cooled cable systems use high temperature-resistant rubber cables and are colour coded for ease of identification.

Unique cable end geometries ensure leak free terminations.



Spring Pins

Fitted with unbreakable spring loaded gun plug body pins.

Water In/Out Supports

Fitted as standard to ensure delivery and uninterrupted flow rate of coolants.

Rear Cable Support




Extra length cable support systems ensure smooth and consistent wire feed at any angle.

Gun Plug Housing

Tough and damage resistant, housings and nuts are formed in robust glass-reinforced polymers encasing all conductive parts in accordance with EN60974-7.

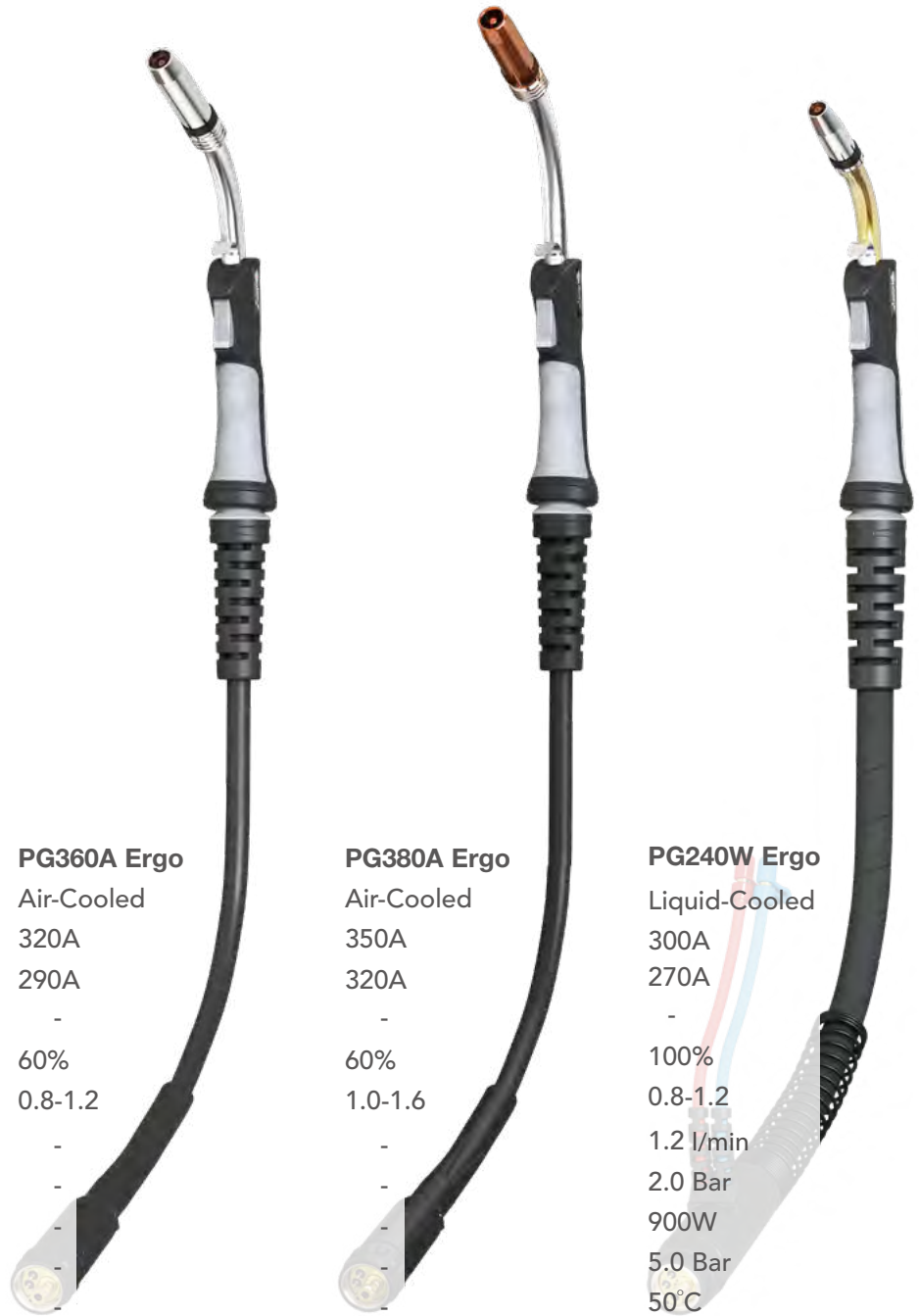
BZL Progrip Mig / Mag Torch Series

Ratings: 150 Amp to 550 Amp, Mixed Gas^{M21}

			
Technical Data	PG150A Ergo	PG240A Ergo	PG250A Ergo
Cooling Method	Air-Cooled	Air-Cooled	Air-Cooled
Rating: CO ₂	180A	250A	230A
Rating: Mixed Gas M21	150A	220A	200A
Rating: Pulse	-	-	-
Duty Cycle:	60%	60%	60%
Wire Size:	0.6-1.0	0.8-1.2	0.8-1.2
Minimum Water Flow	-	-	-
Minimum Water Inlet Pressure	-	-	-
Minimum Cooling Requirements	-	-	-
Maximum Water Inlet Pressure	-	-	-
Maximum Water Inlet Temperature	-	-	-

Order Codes	3mt	UG1500-30ER	UG2400-30ER	UG2500-30ER
	4mt	UG1500-40ER	UG2400-40ER	UG2500-40ER
	5mt	UG1500-50ER	UG2400-50ER	UG2500-50ER

Standard products can be customized & branded as necessary.



Technical Data

Cooling Method

Rating: CO₂

Rating: Mixed Gas M21

Rating: Pulse

Duty Cycle:

Wire Size:

Minimum Water Flow

Minimum Water Inlet Pressure

Minimum Cooling Requirements

Maximum Water Inlet Pressure

Maximum Water Inlet Temperature

PG360A Ergo

Air-Cooled

320A

290A

-

60%

0.8-1.2

-

-

-

-

-

PG380A Ergo

Air-Cooled

350A

320A

-

60%

1.0-1.6

-

-

-

-

-

PG240W Ergo

Liquid-Cooled

300A

270A

-

100%

0.8-1.2

1.2 l/min

2.0 Bar

900W

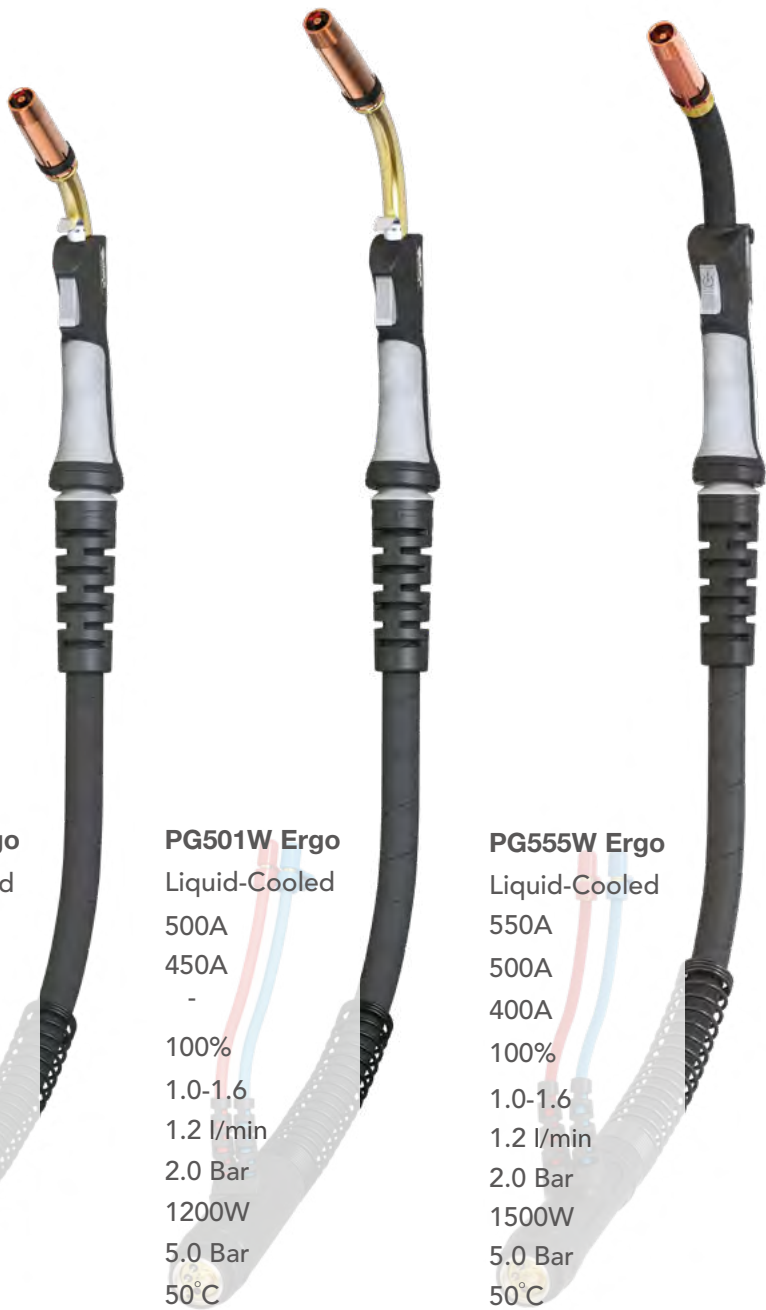
5.0 Bar

50°C

Order Codes	3mt	UG3600-30ER	UG3800-30ER	UG2400W-30ER
	4mt	UG3600-40ER	UG3800-40ER	UG2400W-40ER
	5mt	UG3600-50ER	UG3800-50ER	UG2400W-50ER

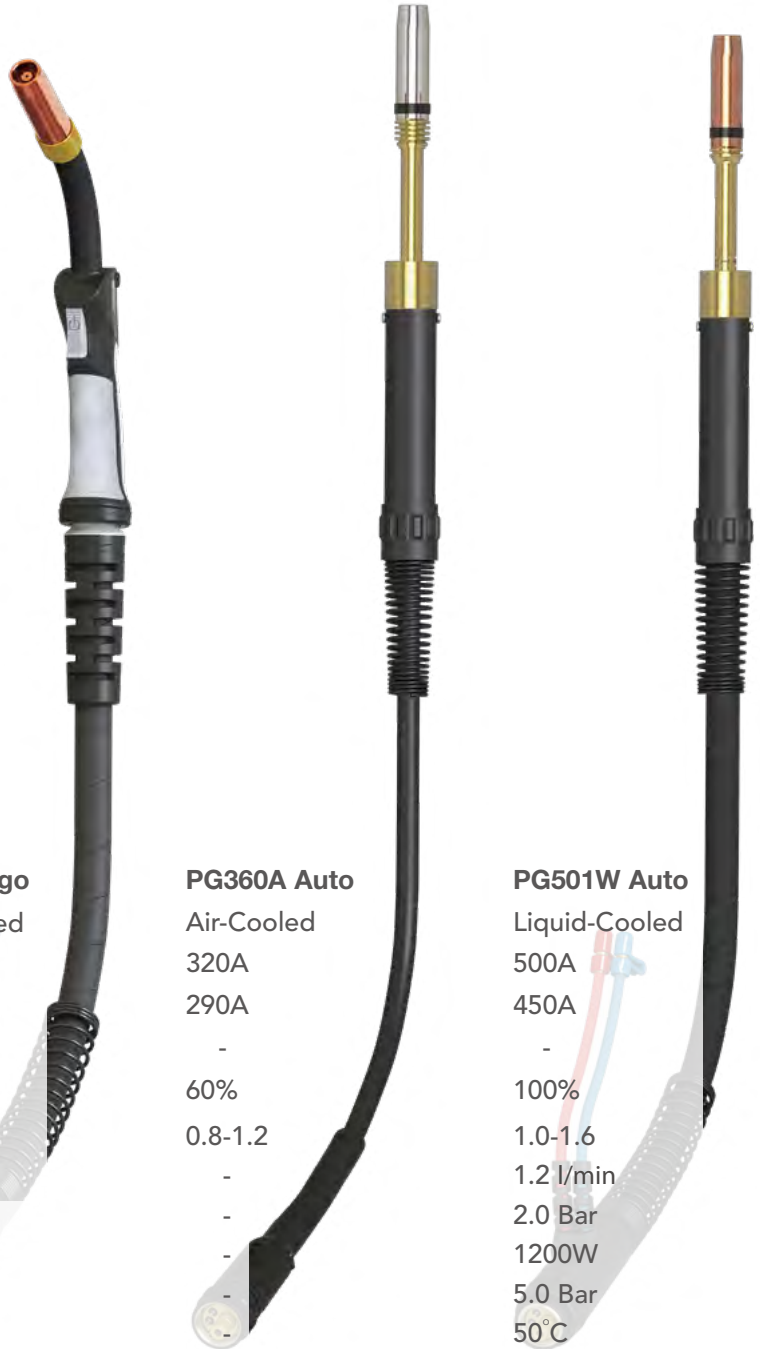
BZL Progrip Mig / Mag Torch Series

Ratings: 150 Amp to 550 Amp, Mixed Gas M21



Technical Data	PG401W Ergo	PG501W Ergo	PG555W Ergo
Cooling Method	Liquid-Cooled	Liquid-Cooled	Liquid-Cooled
Rating: CO ₂	400A	500A	550A
Rating: Mixed Gas M21	350A	450A	500A
Rating: Pulse	-	-	400A
Duty Cycle:	100%	100%	100%
Wire Size:	0.8-1.2	1.0-1.6	1.0-1.6
Minimum Water Flow	1.2 l/min	1.2 l/min	1.2 l/min
Minimum Water Inlet Pressure	2.0 Bar	2.0 Bar	2.0 Bar
Minimum Cooling Requirements	1000W	1200W	1500W
Maximum Water Inlet Pressure	5.0 Bar	5.0 Bar	5.0 Bar
Maximum Water Inlet Temperature	50°C	50°C	50°C

Order Codes	3mt	UG4001-30ER	UG5000-30ER	UG5550-30ER
	4mt	UG4001-40ER	UG5000-40ER	UG5550-40ER
	5mt	UG4001-50ER	UG5000-50ER	UG5550-50ER



Technical Data

Cooling Method	Liquid-Cooled
Rating: CO ₂	600A
Rating: Mixed Gas M21	550A
Rating: Pulse	450A
Duty Cycle:	100%
Wire Size:	1.0-1.6
Minimum Water Flow	1.2 l/min
Minimum Water Inlet Pressure	2.0 Bar
Minimum Cooling Requirements	1700W
Maximum Water Inlet Pressure	5.0 Bar
Maximum Water Inlet Temperature	50°C

PG605W Ergo

Cooling Method	Liquid-Cooled
Rating: CO ₂	600A
Rating: Mixed Gas M21	550A
Rating: Pulse	450A
Duty Cycle:	100%
Wire Size:	1.0-1.6
Minimum Water Flow	1.2 l/min
Minimum Water Inlet Pressure	2.0 Bar
Minimum Cooling Requirements	1700W
Maximum Water Inlet Pressure	5.0 Bar
Maximum Water Inlet Temperature	50°C

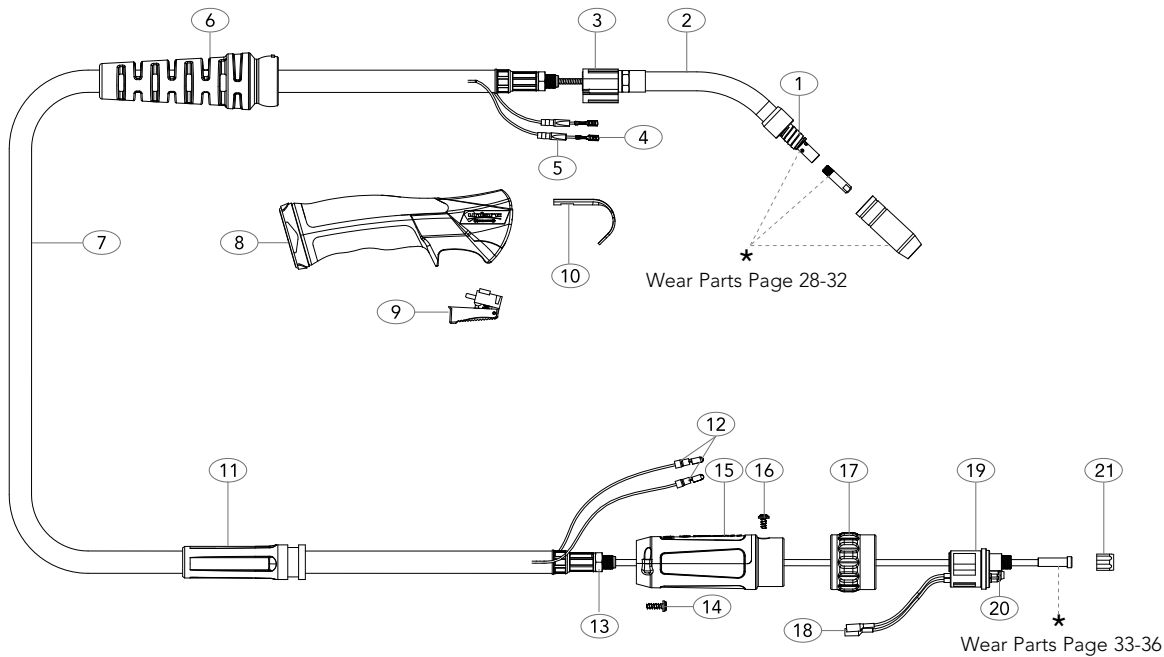
PG360A Auto

Cooling Method	Air-Cooled
Rating: CO ₂	320A
Rating: Mixed Gas M21	290A
Rating: Pulse	-
Duty Cycle:	60%
Wire Size:	0.8-1.2
Minimum Water Flow	-
Minimum Water Inlet Pressure	-
Minimum Cooling Requirements	-
Maximum Water Inlet Pressure	-
Maximum Water Inlet Temperature	-

PG501W Auto

Cooling Method	Liquid-Cooled
Rating: CO ₂	500A
Rating: Mixed Gas M21	450A
Rating: Pulse	-
Duty Cycle:	100%
Wire Size:	1.0-1.6
Minimum Water Flow	1.2 l/min
Minimum Water Inlet Pressure	2.0 Bar
Minimum Cooling Requirements	1200W
Maximum Water Inlet Pressure	5.0 Bar
Maximum Water Inlet Temperature	50°C

Order Codes	3mt	UG6050-30ER	UB3600-20A	UB5000-20A
	4mt	UG6050-40ER	UB3600-30A	UB5000-30A
	5mt	UG6050-50ER	UB3600-40A	UB5000-40A



MODEL

Description	Part Number		
Progrip Ergo Torch Package	3mt UG1500-30ER	4mt UG1500-40ER	5mt UG1500-50ER

SPARE PARTS

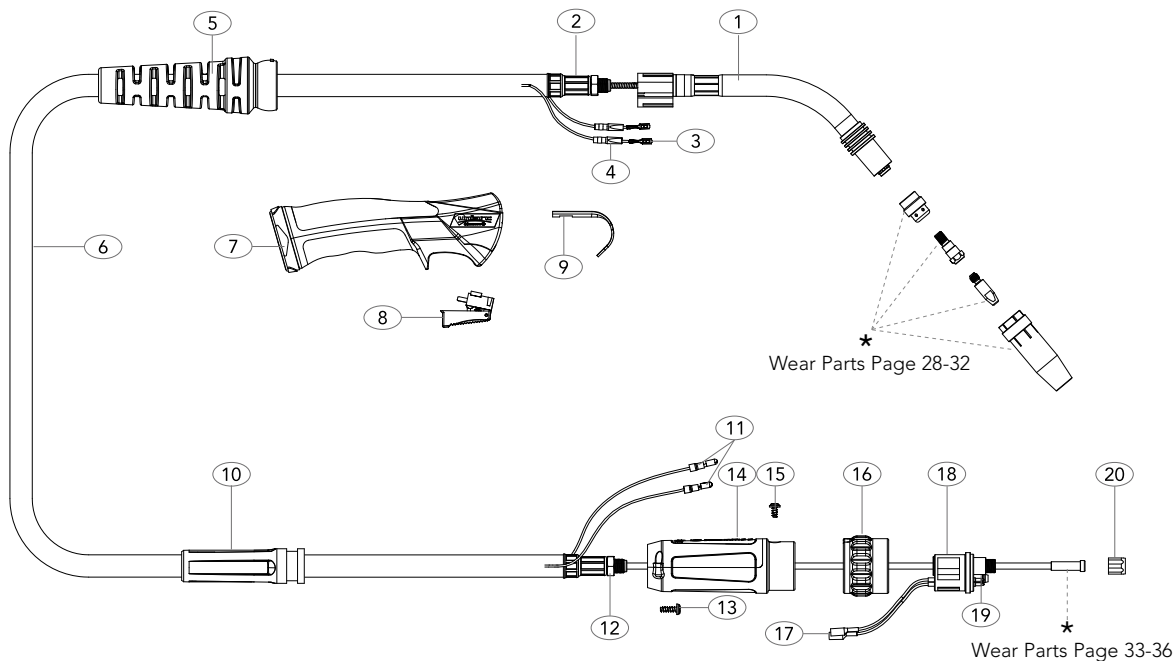
Part Number	Description	Part Number	Description
1 UB1504	Shroud Spring	16 UBL1541	Gun Plug Screw
2 UB1501	Swan Neck Assembly	17 UC1519/P	Gun Plug Nut
3 UG1515	Ergo Handle Location Body	18 UB1523	Gun Plug Terminal Female
4 UB1521	Cable Terminal	19 UC1528	Hybrid Gun Plug Body c/w Spring Pins
5 UB1521-C	Cable Terminal Cover	20 UB1524	Gun Plug 'O' Ring
6 UG8015	Handle Cable Support c/w Ball Joint	21 UB1525	Liner Nut
7 UB1517-30	Duraflex Cable Assembly x 3mt		
UB1517-40	Duraflex Cable Assembly x 4mt		
UB1517-50	Duraflex Cable Assembly x 5mt		
8 UG2514	Ergo Handle Kit c/w Lock Nut		
9 UG2516	Medium / Large Ergo Trigger		
10 UB2517	Hanger Hook (Optional Extra)		
11 UC2841	Cable Support		
12 UB1522	Cable Terminal Male		
13 UB1505	Lock Nut		
14 SCSP1-1	Gun Plug Housing Screw		
15 SC2578/S	Gun Plug Housing c/w Nut		

**Standard products can be fully
customized and branded**

All products conform to EN60974-7, **CE** and are RoHS2, REACH and WEEE compliant

PG240A Air-Cooled MIG Welding Torch

Rating: 250A CO₂ 220A mixed gas M21, EN60974-7 @ 60% duty cycle. 0.8 to 1.2mm wires



MODEL

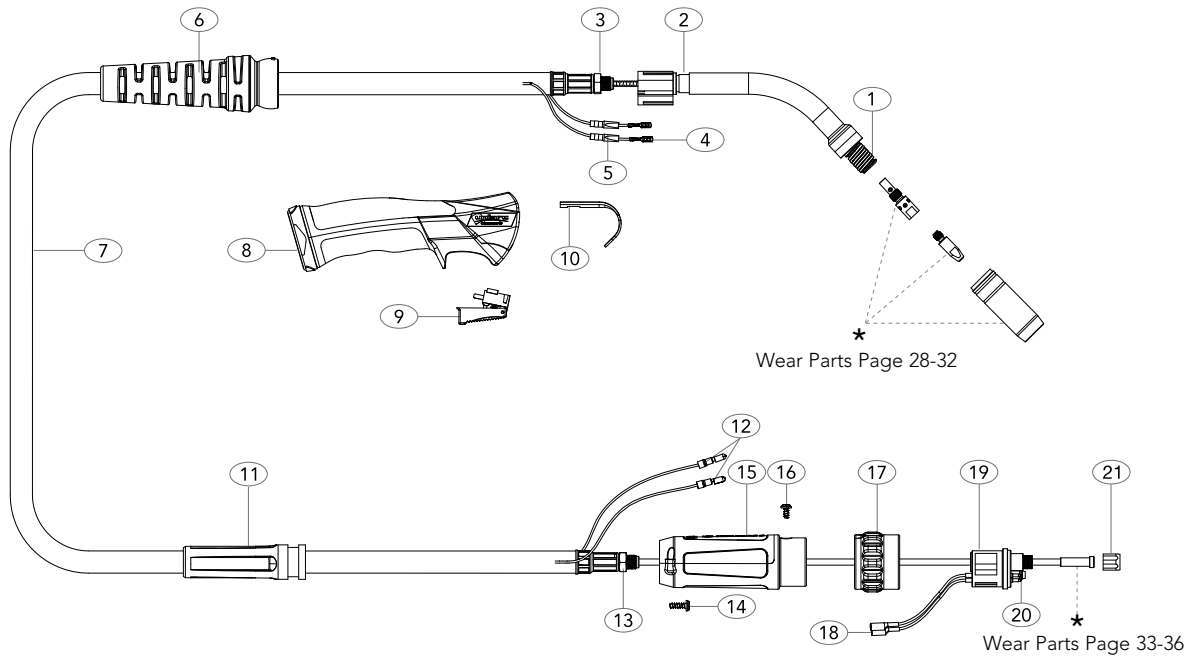
Description	Part Number		
Progrip Ergo Torch Package	3mt UG2400-30ER	4mt UG2400-40ER	5mt UG2400-50ER

SPARE PARTS

Part Number	Description	Part Number	Description
1 UG2401	Swan Neck Assembly	16 UC1519/S	Gun Plug Nut
2 UG1515	Ergo Handle Location Body	17 UB1523	Gun Plug Terminal Female
3 UB1521	Cable Terminal	18 UC1528	Hybrid Gun Plug Body c/w Spring Pins
4 UB1521-C	Cable Terminal Cover	19 UB1524	Gun Plug 'O' Ring
5 UG8015	Handle Cable Support c/w Ball Joint	20 UB1525	Liner Nut
6 UB2603-30	Duraflex Cable Assembly x 3mt		
UB2603-40	Duraflex Cable Assembly x 4mt		
UB2603-50	Duraflex Cable Assembly x 5mt		
7 UG2514	Ergo Handle Kit c/w Lock Nut		
8 UG2516	Medium / Large Ergo Trigger		
9 UG2517	Hanger Hook (Optional Extra)		
10 UC2841	Cable Support		
11 UB1522	Cable Terminal Male		
12 UB1505	Lock Nut		
13 SCSP1-1	Gun Plug Housing Screw		
14 SC2578/S	Gun Plug Housing c/w Nut		
15 UBL1541	Gun Plug Screw		

Standard products can be fully customized and branded

All products conform to EN60974-7, **CE** and are RoHS2, REACH and WEEE compliant



MODEL

Description	Part Number		
Progrip Ergo Torch Package	3mt	4mt	5mt
	UG2500-30ER	UG2500-40ER	UG2500-50ER

SPARE PARTS

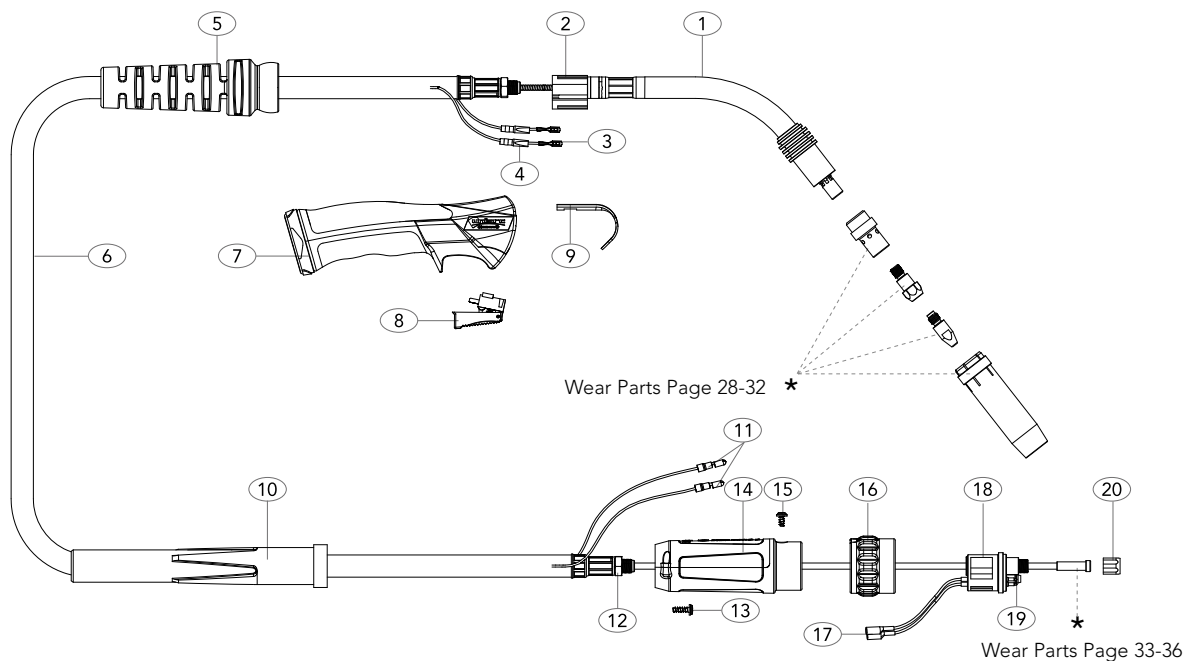
Part Number	Description	Part Number	Description
1 UB2502	Shroud Spring	16 UBL1541	Gun Plug Screw
2 UG2501	Swan Neck Assembly	17 UC1519/S	Gun Plug Nut
3 UG1515	Ergo Handle Location Body	18 UB1523	Gun Plug Terminal Female
4 UB1521	Cable Terminal	19 UC1528	Hybrid Gun Plug Body c/w Spring Pins
5 UB1521-C	Cable Terminal Cover	20 UB1524	Gun Plug 'O' Ring
6 UG8015	Handle Cable Support c/w Ball Joint	21 UB1525	Liner Nut
7 UB2503-30	Duraflex Cable Assembly x 3mt		
UB2503-40	Duraflex Cable Assembly x 4mt		
UB2503-50	Duraflex Cable Assembly x 5mt		
8 UG2514	Ergo Handle Kit c/w Lock Nut		
9 UG2516	Medium / Large Ergo Trigger		
10 UB2517	Hanger Hook (Optional Extra)		
11 UC2841	Cable Support		
12 UB1522	Cable Terminal Male		
13 UB1505	Lock Nut		
14 SCSP1-1	Gun Plug Housing Screw		
15 SC2578/S	Gun Plug Housing c/w Nut		

**Standard products can be fully
customized and branded**

All products conform to EN60974-7, **CE** and are RoHS2, REACH and WEEE compliant

PG360A Air-Cooled MIG Welding Torch

Rating: 320A CO₂ 290A mixed gas M21, EN60974-7 @ 60% duty cycle. 0.8 to 1.2mm wires



MODEL

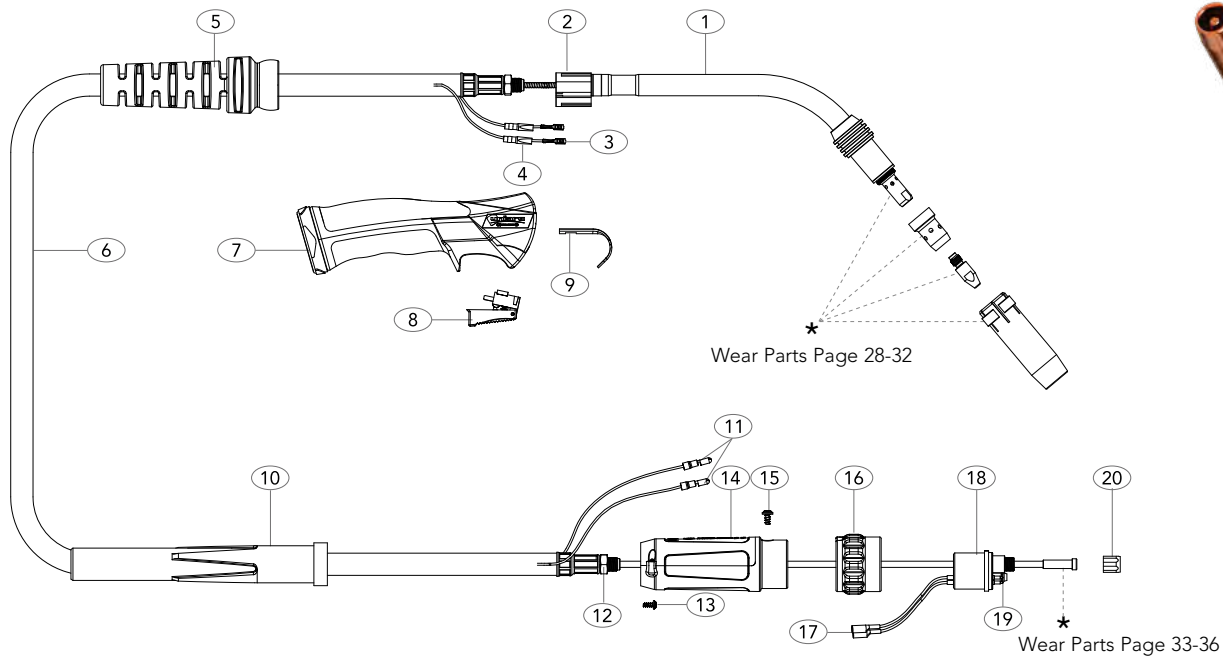
Description	Part Number		
Progrip Ergo Torch Package	3mt	4mt	5mt
	UG3600-30ER	UG3600-40ER	UG3600-50ER

SPARE PARTS

Part Number	Description	Part Number	Description
1	UG3603 Swan Neck Assembly	16	UC1519/S Gun Plug Nut
2	UG1515 Ergo Handle Location Body	17	UB1523 Gun Plug Terminal Female
3	UB1521 Cable Terminal	18	UC1528 Hybrid Gun Plug Body c/w Spring Pins
4	UB1521-C Cable Terminal Cover	19	UB1524 Gun Plug 'O' Ring
5	UG8016 Handle Cable Support c/w Ball Joint	20	UB1525 Liner Nut
6	UB3609-30 Duraflex Cable Assembly x 3mt		
	UB3609-40 Duraflex Cable Assembly x 4mt		
	UB3609-50 Duraflex Cable Assembly x 5mt		
7	UG2514 Ergo Handle Kit c/w Lock Nut		
8	UG2516 Medium / Large Ergo Trigger		
9	UB2517 Hanger Hook (Optional Extra)		
10	UPA3541 Cable Support		
11	UB1522 Cable Terminal Male		
12	UB1505 Lock Nut		
13	SCSP1-1 Gun Plug Housing Screw		
14	SC2578/S Gun Plug Housing c/w Nut		
15	UBL1541 Gun Plug Screw		

Standard products can be fully customized and branded

All products conform to EN60974-7, **CE** and are RoHS2, REACH and WEEE compliant



MODEL

Description	Part Number		
Progrip Ergo Torch Package	3mt UG3800-30ER	4mt UG3800-40ER	5mt UG3800-50ER

SPARE PARTS

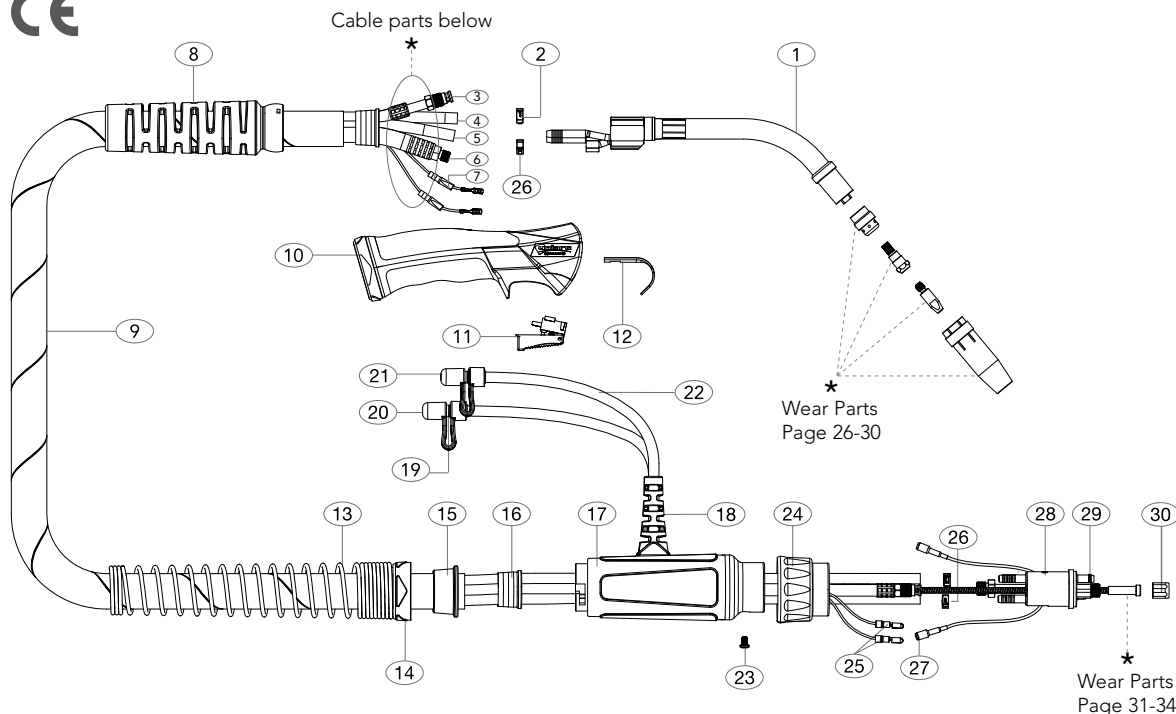
Part Number	Description	Part Number	Description			
1	UG3801	Swan Neck Assembly	16	UC1519/S	Gun Plug Nut	
2	UG1515	Ergo Handle Location Body	17	UB1523	Gun Plug Terminal Female	
3	UB1521	Cable Terminal	18	UB1528	Gun Plug Body c/w Spring Pins	
4	UB1521-C	Cable Terminal Cover	19	UB1524	Gun Plug 'O' Ring	
5	UG8016	Handle Cable Support c/w Ball Joint	20	UB1525	Liner Nut	
6	UB3809-30	Duraflex Cable Assembly x 3mt	<div>Standard products can be fully customized and branded</div>			
	UB3809-40	Duraflex Cable Assembly x 4mt				
	UB3809-50	Duraflex Cable Assembly x 5mt				
7	UG2514	Ergo Handle Kit c/w Lock Nut				
8	UG2516	Medium/Large Ergo Trigger				
9	UB2517	Hanger Hook (Optional Extra)				
10	UPA3541	Cable Support				
11	UB1522	Cable Terminal Male				
12	UB1505	Lock Nut				
13	SCSP1-1	Gun Plug Housing Screw				
14	SC2578/L	Gun Plug Housing c/w Nut				
15	UB1526	Gun Plug Screw				

**Standard products can be fully
customized and branded**

All products conform to EN60974-7, **CE** and are RoHS2, REACH and WEEE compliant

PG240W Liquid-Cooled MIG Welding Torch

Rating: 300A CO₂ 270A mixed gas M21, EN60974-7 @ 100% duty cycle. 0.8 to 1.2mm wires



MODEL

Description	Part Number		
Progrip Ergo Torch Package	3mt	4mt	5mt
	UG2400W-30ER	UG2400W-40ER	UG2400W-50ER

SPARE PARTS

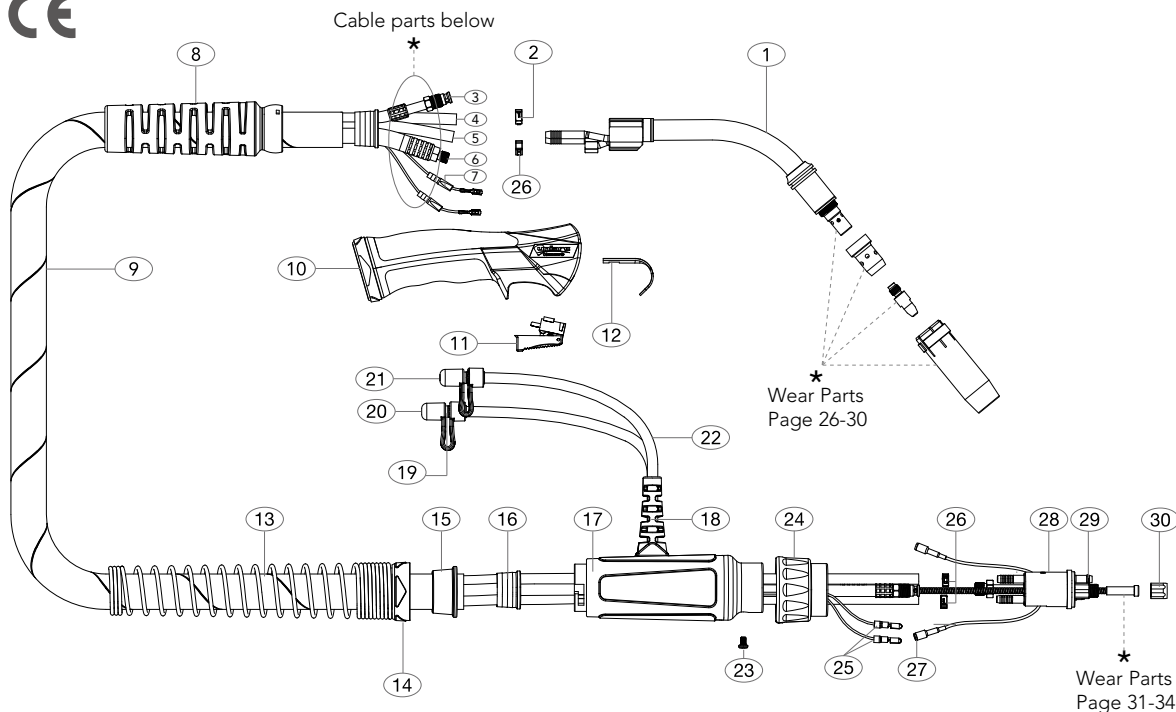
Part Number	Description
1 UG2409	Swan Neck
2 15400020	Hose Clamp 8.7mm
8 UG3208	Handle Cable Support c/w Ball Joint
9 UG4006-30	Cable Assembly x 3mt
UG4006-40	Cable Assembly x 4mt
UG4006-50	Cable Assembly x 5mt
10 UG2514	Ergo Handle Kit c/w Lock Nut
11 UG2516	Medium / Large Trigger
12 UB2517	Hanger Hook (Optional Extra)
13 UC8027	Housing Spring
14 UT8028	Spring Cable Support Nut
15 UT8009	Canvas Cover Clamp
16 UG8010	Canvas Cover Retainer
17 UT5022	Gun Plug Housing Assembly
18 USLH1820-S	Inlet/Outlet Hose Support
19 UB5023A	Water Hose Nipple
20 UBD-80320	Blue Cap Stopper
21 UBD-80310	Red Cap Stopper
22 UB5017	Water Outlet Hose
23 UB1526	Gun Plug Screw
24 UB1519/S	Gun Plug Nut
25 UB1522	Cable Terminal Male
26 15400023	Water Hose Clamp 10.0mm
27 UB1523	Gun Plug Terminal Female
28 UB5098	Gun Plug Body c/w Spring Pins
29 UB1524	Gun Plug 'O' Ring
30 UB1525	Liner Nut

CABLE PARTS

Description	Part Number		
	3mt	4mt	5mt
3 Outer Liner Assembly	UC5008-30	UB5008-40	UB5008-50
4 Gas Hose Assembly	UB5013-30	UB5013-40	UB5013-50
5 Water Inlet Hose Assembly	UB5012-30	UB5012-40	UB5012-50
6 Power Cable Assembly	UB4015-30	UB4015-40	UB4015-50
7 Switch Lead Assembly	UB5010-30	UB5010-40	UB5010-50

Standard products can be fully
customized and branded

All products conform to EN60974-7, CE and are RoHS2, REACH and WEEE compliant



MODEL

Description	Part Number		
	3mt	4mt	5mt
Progrip Ergo Torch Package	UG4001-30ER	UG4001-40ER	UG4001-50ER

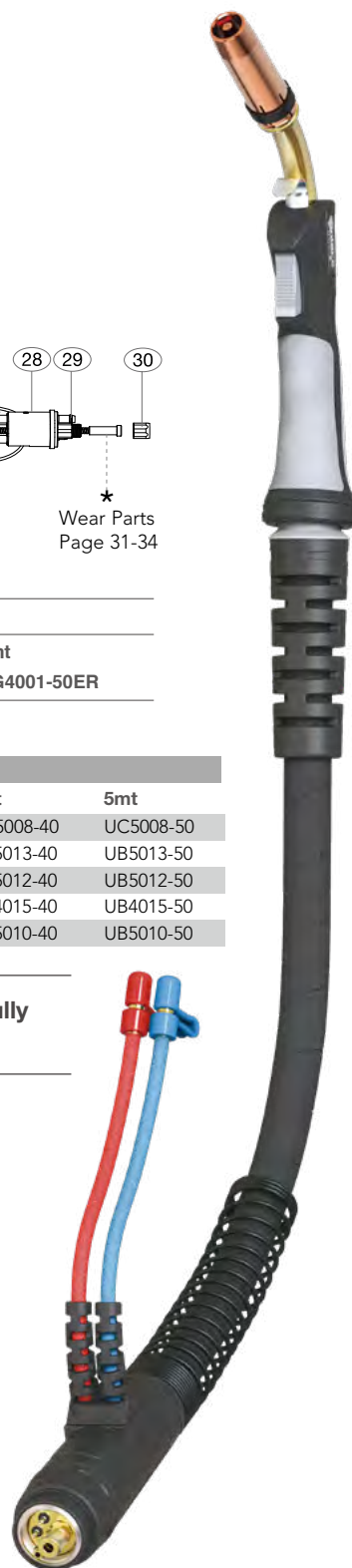
SPARE PARTS

Part Number	Description
1 UG4011	Swan Neck
2 15400020	Hose Clamp 8.7mm
8 UG3208	Handle Cable Support c/w Ball Joint
9 UG4006-30	Cable Assembly x 3mt
UG4006-40	Cable Assembly x 4mt
UG4006-50	Cable Assembly x 5mt
10 UG2514	Ergo Handle Kit c/w Lock Nut
11 UG2516	Medium / Large Trigger
12 UB2517	Hanger Hook (Optional Extra)
13 UC8027	Housing Spring
14 UT8028	Spring Cable Support Nut
15 UT8009	Canvas Cover Clamp
16 UT8010	Canvas Cover Retainer
17 UT5022	Gun Plug Housing Assembly
18 USLH1820-S	Inlet/Outlet Hose Support
19 UB5023A	Water Hose Nipple
20 UBD-80320	Blue Cap Stopper
21 UBD-80310	Red Cap Stopper
22 UB5017	Water Outlet Hose
23 UB1526	Gun Plug Screw
24 UB1519/S	Gun Plug Nut
25 UB1522	Cable Terminal Male
26 15400023	Water Hose Clamp 10.0mm
27 UB1523	Gun Plug Terminal Female
28 UB5098	Gun Plug Body c/w Spring Pins
29 UB1524	Gun Plug 'O' Ring
30 UB1525	Liner Nut

CABLE PARTS

Description	Part Number		
	3mt	4mt	5mt
3 Outer Liner Assembly	UC5008-30	UC5008-40	UC5008-50
4 Gas Hose Assembly	UB5013-30	UB5013-40	UB5013-50
5 Water Inlet Hose Assembly	UB5012-30	UB5012-40	UB5012-50
6 Power Cable Assembly	UB4015-30	UB4015-40	UB4015-50
7 Switch Lead Assembly	UB5010-30	UB5010-40	UB5010-50

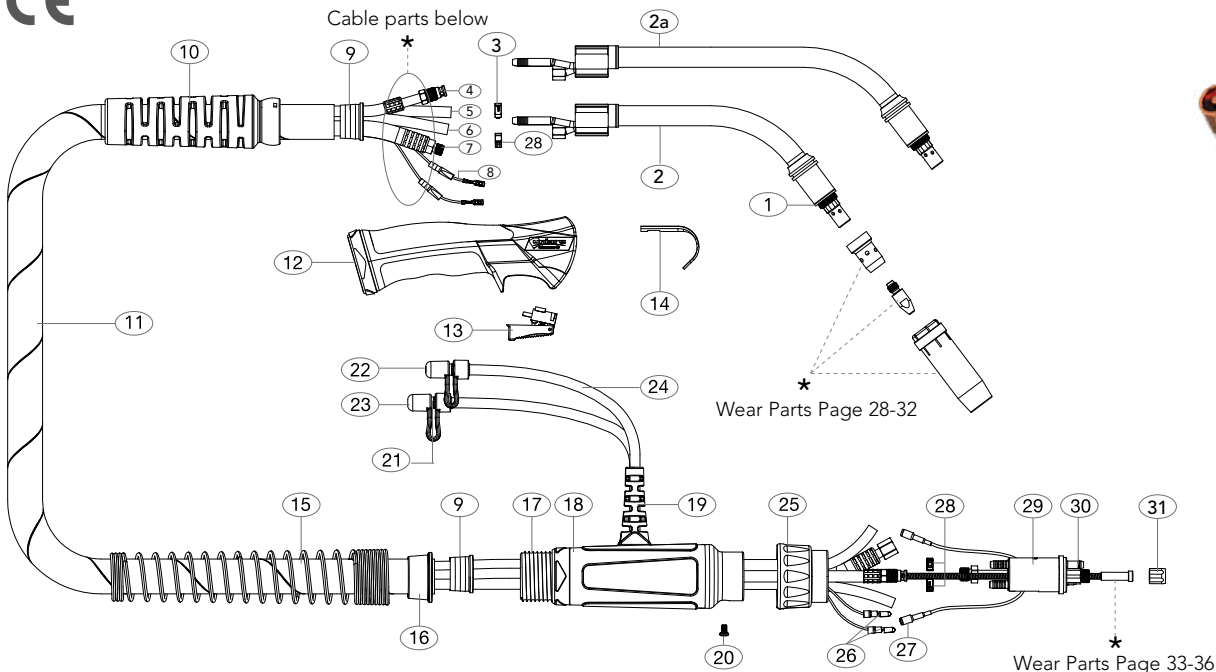
Standard products can be fully customized and branded



All products conform to EN60974-7, **CE** and are RoHS2, REACH and WEEE compliant

PG501W Liquid-Cooled MIG Welding Torch

Rating: 500A CO₂ 450A mixed gas M21, EN60974-7 @ 100% duty cycle. 1.0 to 1.6mm wires



MODEL

Description	Part Number		
Progrip Ergo Torch Package	3mt	4mt	5mt
	UG5000-30ER UG5000L-30ER	UG5000-40ER UG5000L-40ER	UG5000-50ER UG5000L-50ER

SPARE PARTS

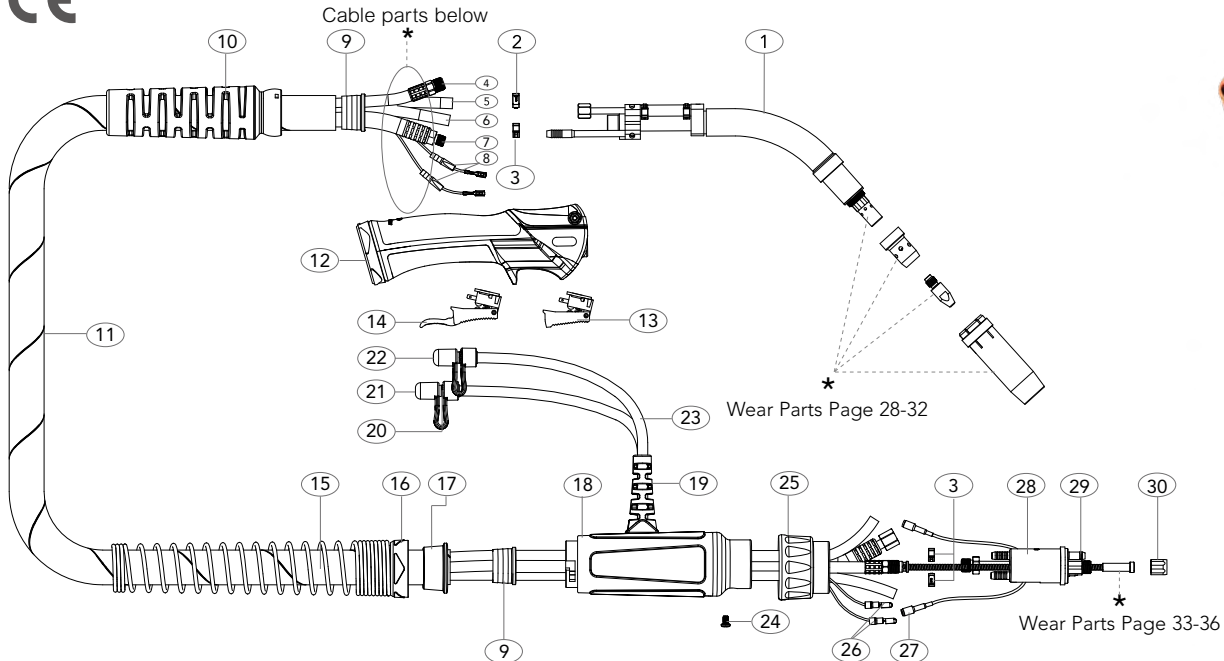
Part Number	Description
1 UB5003	Insulating Washer
2 UG5002	Swan Neck Assembly
2a UG5002L	Swan Neck Assembly Long
3 15400020	Hose Clamp 8.7mm
9 UG8010	Canvas Cover Retainer Small
10 UG3208	Handle Cable Support c/w Ball Joint
11 UG5006-30	Cable Assembly x 3mt
UG5006-40	Cable Assembly x 4mt
UG5006-50	Cable Assembly x 5mt
12 UG2514	Ergo Handle Kit c/w Lock Nut
13 UG2516	Medium / Large Ergo Trigger
14 UB2517	Hanger Hook (Optional Extra)
15 UC8027	Housing Spring
16 UT8009	Canvas Cover Clamp
17 UT8028	Spring Cable Support Nut
18 UT5022	Gun Plug Housing Assembly
19 USLH1820-S	Inlet/Outlet Hose Support
20 UB1526	Gun Plug Screw
21 UB5023A	Water Hose Nipple
22 UBD-80310	Blue Cap Stopper
23 UBD-80320	Red Cap Stopper
24 UB5017	Water Outlet Hose O/Braid
25 UB1519/S	Gun Plug Nut
26 UB1522	Cable Terminal Male
27 UB1523	Gun Plug Terminal Female
28 15400023	Hose Clamp 10.0mm
29 UB5098	Gun Plug Body c/w Spring Pins
30 UB1524	Gun Plug 'O' Ring
31 UB1525	Liner Nut

CABLE PARTS

Description	Part Number		
	3mt	4mt	5mt
4 Outer Liner Assembly	UC5008-30	UC5008-40	UC5008-50
5 Gas Hose Assembly	UB5013-30	UB5013-40	UB5013-50
6 Water Inlet Hose Assembly	UB5012-30	UB5012-40	UB5012-50
7 Power Cable Assembly	UB4015-30	UB4015-40	UB4015-50
8 Switch Lead Assembly	UB5010-30	UB5010-40	UB5010-50

Standard products can be fully customized and branded

All products conform to EN60974-7, CE and are RoHS2, REACH and WEEE compliant



MODEL

Description	Part Number		
Progrip Ergo Torch Package	3mt UG5550-30ER	4mt UG5550-40ER	5mt UG5550-50ER


SPARE PARTS

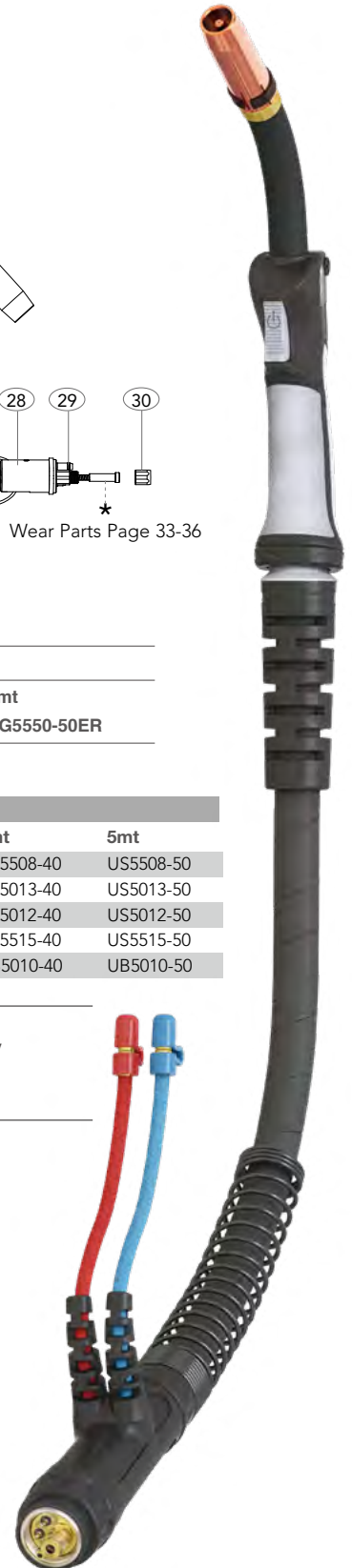
Part Number	Description
1 UB5502	Swan Neck Assembly
2 15400020	Hose Clamp 8.7mm
3 15400023	Hose Clamp 10.0mm
9 UG8010	Canvas Cover Retainer
10 UG3208	Handle Cable Support c/w Ball Joint
11 UG5506-30	Cable Assembly x 3mt
UB5506-40	Cable Assembly x 4mt
UB5506-50	Cable Assembly x 5mt
12 UG2515	Handle Assembly
13 UGH2516	Medium / Large Ergo Trigger
14 UGH2516L	Extended Trigger Assembly
15 UC8027	Housing Spring
16 UT8028	Spring Cable Support Nut
17 UT8009	Canvas Cover Clamp
18 UT5022	Gun Plug Housing Assembly
19 USLH1820-S	Inlet/Outlet Hose Support
20 UB5023A	Water Hose Nipple
21 UBD-80310	Blue Cap Stopper
22 UBD-80320	Red Cap Stopper
23 UB5017	Water Outlet Hose O/Braid
24 UB1526	Gun Plug Screw
25 UB1519/S	Gun Plug Nut
26 UB1522	Cable Terminal Male
27 UB1523	Gun Plug Terminal Female
28 UB5098	Gun Plug Body c/w Spring Pins
29 UB1524	Gun Plug 'O' Ring
30 UB1525	Liner Nut

CABLE PARTS

Description	Part Number		
	3mt	4mt	5mt
4 Outer Liner Assembly	US5508-30	US5508-40	US5508-50
5 Gas Hose Assembly	US5013-30	US5013-40	US5013-50
6 Water Inlet Hose Assembly	US5012-30	US5012-40	US5012-50
7 Power Cable Assembly	US5515-30	US5515-40	US5515-50
8 Switch Lead Assembly	UB5010-30	UB5010-40	UB5010-50

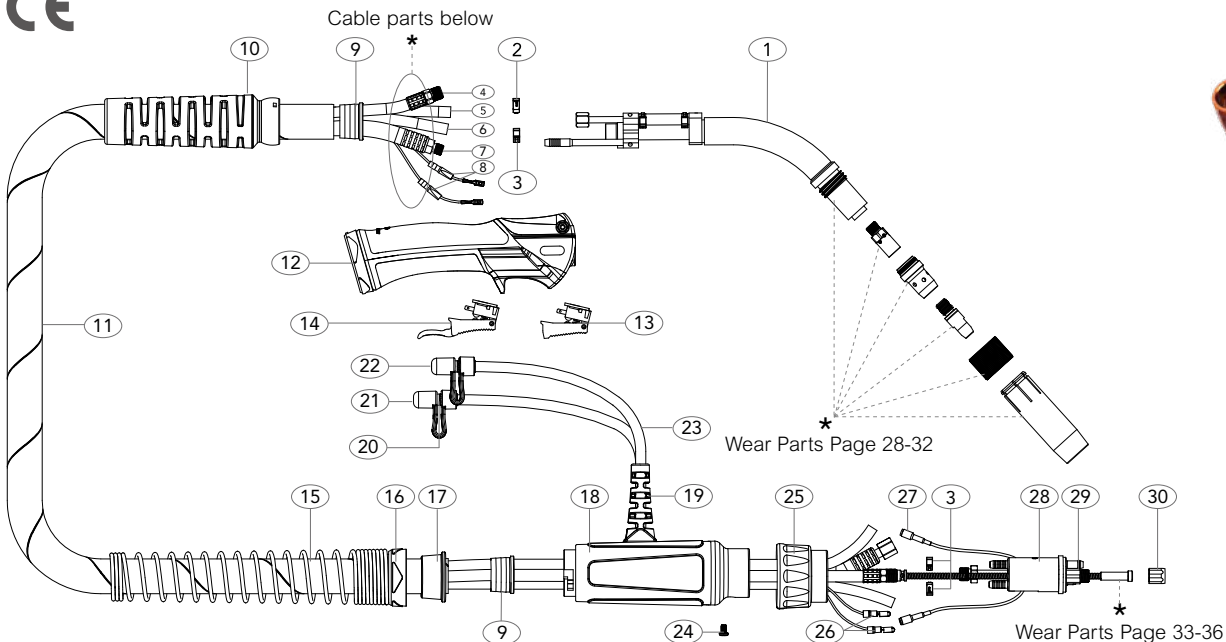
Standard products can be fully customized and branded

All products conform to EN60974-7,  and are RoHS2, REACH and WEEE compliant



PG605W Liquid-Cooled MIG Welding Torch

Rating: 600A CO₂ 550A mixed gas M21, 450A Pulse EN60974-7 @ 100% duty cycle. 1.0 to 1.6mm wires



MODEL

Description	Part Number		
Progrip Ergo Torch Package	3mt UG6050-30ER	4mt UG6050-40ER	5mt UG6050-50ER

SPARE PARTS

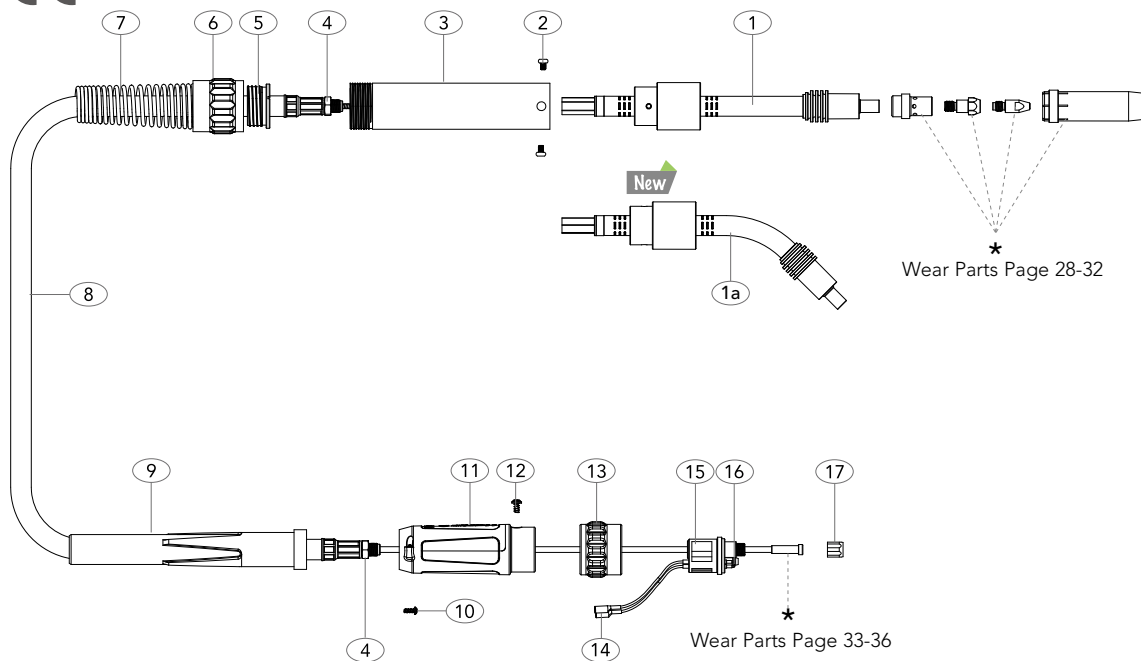
Part Number	Description
1 UB6502	Swan Neck Assembly
2 15400020	Hose Clamp 8.7mm
3 15400023	Hose Clamp 10.0mm
9 UG8010	Canvas Cover Retainer
10 UG3208	Handle Cable Support c/w Ball Joint
11 UG5506-30	Cable Assembly x 3mt
UG5506-40	Cable Assembly x 4mt
UG5506-50	Cable Assembly x 5mt
12 UG2515	Handle Assembly
13 UGH2516	Medium/Large Ergo Trigger
14 UGH2516L	Extended Trigger Assembly
15 UC8027	Housing Spring
16 UT8028	Spring Cable Support Nut
17 UB8009	Canvas Cover Clamp
18 UP5022	Gun Plug Housing Assembly
19 USLH1820-S	Inlet/Outlet Hose Support
20 UB5023A	Water Hose Nipple
21 UBD-80310	Blue Cap Stopper
22 UBD-80320	Red Cap Stopper
23 UB5017	Water Outlet Hose O/Braid
24 UB1526	Gun Plug Screw
25 UB1519/S	Gun Plug Nut
26 UB1522	Cable Terminal Male
27 UB1523	Gun Plug Terminal Female
28 UB5098	Gun Plug Body c/w Spring Pins
29 UB1524	Gun Plug 'O' Ring
30 UB1525	Liner Nut

CABLE PARTS

Description	Part Number		
	3mt	4mt	5mt
4 Outer Liner Assembly	US5508-30	US5508-40	US5508-50
5 Gas Hose Assembly	US5013-30	US5013-40	US5013-50
6 Water Inlet Hose Assembly	US5012-30	US5012-40	US5012-50
7 Power Cable Assembly	US5515-30	US5515-40	US5515-50
8 Switch Lead Assembly	UB5010-30	UB5010-40	UB5010-50

Standard products can be fully customized and branded

All products conform to EN60974-7, and are RoHS2, REACH and WEEE compliant



MODEL

Description	Part Number		
Classic Auto Torch	2mt	3mt	4mt
	UB3600-20A	UB3600-30A	UB3600-40A
	UB3600-20A45	UB3600-30A45	UB3600-40A45

SPARE PARTS

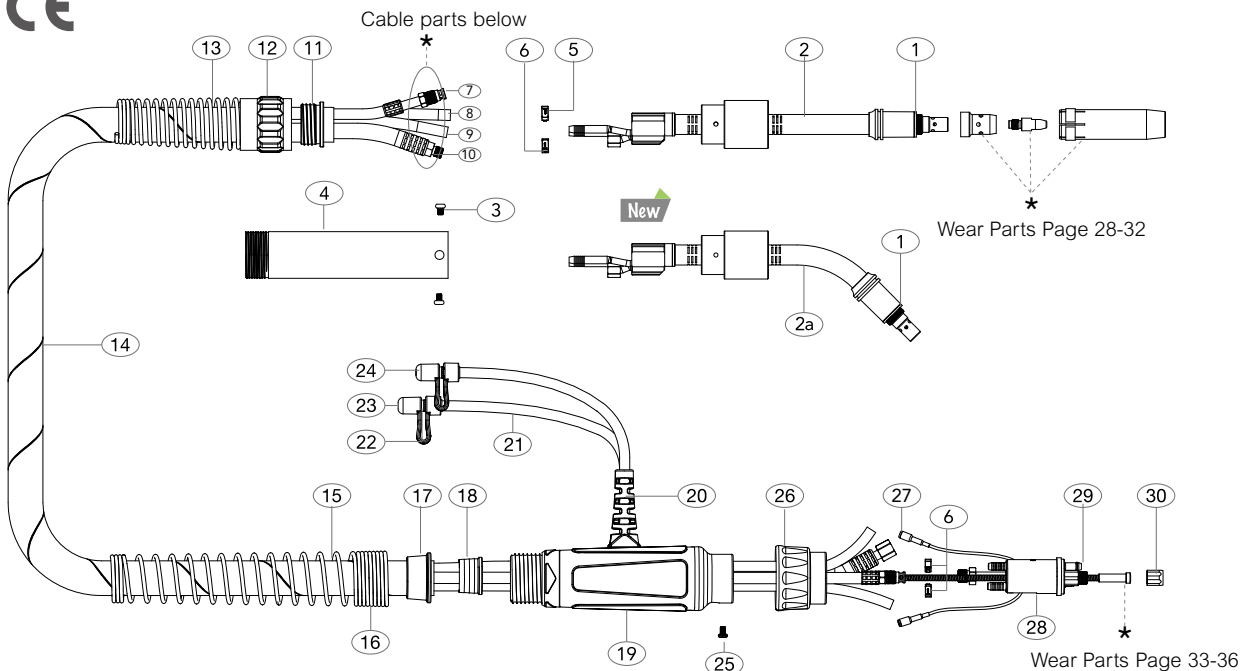
Part Number	Description	Part Number	Description
1 UB3627	Swan Neck Assembly	16 UB1524	Gun Plug 'O' Ring
2 UB3645A	Swan Neck Assembly 45°	17 UB1525	Liner Nut
2a UB3629	Handle Screw		
3 UB3630	Automatic Handle		
4 UB1505	Lock Nut		
5 UB8110A	Auto Handle Insert		
6 UB8030A	Auto Handle Lock Nut		
7 MIG8017A	Auto Handle Spring		
8 UB3609-20A	Duraflex Cable Assembly x 2mt		
9 UB3609-30A	Duraflex Cable Assembly x 3mt		
UB3609-40A	Duraflex Cable Assembly x 4mt		
UPA3541	Cable Support		
10 SCSP1-1	Gun Plug Housing Screw		
11 SC2578/L	Gun Plug Housing		
12 UBL1541	Gun Plug Screw		
13 UC1519/S	Gun Plug Nut		
14 UB1523	Gun Plug Terminal Female		
15 UC1528	Hybrid Gun Plug Body c/w Spring Pins		

**Standard products can be fully
customized and branded**

All products conform to EN60974-7, **CE** and are RoHS2, REACH and WEEE compliant

PG501W Auto Liquid-Cooled MIG Welding Torch

Rating: 500A CO₂ 450A mixed gas M21, EN60974-7 @ 100% duty cycle. 1.0 to 1.6mm wires



MODEL

Description	Part Number		
	2mt	3mt	4mt
Classic Auto Torch	UB5000-20A	UB5000-30A	UB5000-40A
	New UB5000-20A45	UB5000-30A45	UB5000-40A45

SPARE PARTS

Part Number	Description
1 UB5003	Insulating Washer
2 UB5002A	Swan Neck Assembly
2a UB5045A	Swan Neck Assembly 45°
3 UB3629	Handle Screw
4 UB3630	Automatic Handle
5 15400020	Hose Clamp 8.7mm
6 15400023	Hose Clamp 10.0mm
11 UB8110A	Auto Handle Insert
12 UB8030A	Auto Handle Lock Nut
13 UB8017A	Auto Handle Spring
14 UPRB5006-AUTO-20	Cable Assembly x 2mt
15 UPRB5006-AUTO-30	Cable Assembly x 3mt
16 UPRB5006-AUTO-40	Cable Assembly x 4mt
15 UC8027	Housing Spring
16 UT8028	Spring Cable Support Nut
17 UT8009	Canvas Cover Clamp
18 UG8010	Canvas Cover Retainer
19 UT5022	Gun Plug Housing Assembly
20 USLH1820-S	Inlet/Outlet Hose Support
21 UB5017	Water Outlet Hose O/Braid
22 UB5023	Water Hose Nipple
23 UBD-80310	Blue Cap Stopper
24 UBD-80320	Red Cap Stopper
25 UB1526	Gun Plug Screw
26 UB1519/S	Gun Plug Nut
27 UB1523	Gun Plug Terminal Female

Part Number	Description
28 UB5098	Gun Plug Body c/w Spring Pins
29 UB1524	Gun Plug 'O' Ring
30 UB1525	Liner Nut

Cable parts			
Description	Part Number		
	3M	4M	5M
7 Outer Liner Assembly	UC5008-20	UC5008-30	UC5008-40
8 Gas Hose Assembly	UB5013-20	UB5013-30	UB5013-40
9 Water Inlet Hose Assembly	UB5012-20	UB5012-30	UB5012-40
10 Power Cable Assembly	UB5015-20	UB5015-30	UB5015-40

Standard products can be fully customized and branded

All products conform to EN60974-7, **CE** and are RoHS2, REACH and WEEE compliant

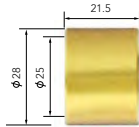
Wear Parts

BZL Nozzles

Part No.	Description	Bore	Wall	Material	PG150A	PG240A	PG250A	PG360A (PG380A Alloy)	PG380A	PG240W	PG401W	PG501W (PG501W Alloy)	PG555W	PG605W
UB1529	Cylindrical Nozzle	16.2	0.9mm	Copper	●	●	●	●	●	●	●	●	●	●
UB1530	Conical Nozzle	12.0	0.9mm	Copper	●	●	●	●	●	●	●	●	●	●
UB1531	Tapered Nozzle	10.6	0.9mm	Copper	●	●	●	●	●	●	●	●	●	●
UB1532	Bottle Nozzle	12.8	0.9mm	Copper	●	●	●	●	●	●	●	●	●	●
UB1533	Spot Welding Nozzle	16.2	0.9mm	Copper	●	●	●	●	●	●	●	●	●	●
UB2415	Cylindrical Nozzle	17.2	1.4mm	Copper	●	●	●	●	●	●	●	●	●	●
UB2416	Conical Nozzle	12.6	1.4mm	Copper	●	●	●	●	●	●	●	●	●	●
UB2417	Tapered Nozzle	10.0	1.4mm	Copper	●	●	●	●	●	●	●	●	●	●
UC2415	Eco Nozzle Cylindrical	17.2	1.4mm	Brass	●	●	●	●	●	●	●	●	●	●
UC2416	Eco Nozzle Conical	12.6	1.4mm	Brass	●	●	●	●	●	●	●	●	●	●
UC2417	Eco Nozzle Tapered	10.0	1.4mm	Brass	●	●	●	●	●	●	●	●	●	●
UB2507	Cylindrical Nozzle	18.5	1.5mm	Copper	●	●	●	●	●	●	●	●	●	●
UB2508	Conical Nozzle	15.0	1.5mm	Copper	●	●	●	●	●	●	●	●	●	●
UB2509	Tapered Nozzle	12.0	1.5mm	Copper	●	●	●	●	●	●	●	●	●	●
UB2510	Bottle Nozzle	14.5	1.5mm	Copper	●	●	●	●	●	●	●	●	●	●
UB2511	Spot Welding Nozzle	18.0	1.5mm	Copper	●	●	●	●	●	●	●	●	●	●
UB3615	Cylindrical Nozzle	19.0	2.25mm	Copper	●	●	●	●	●	●	●	●	●	●
UB3616	Conical Nozzle	16.1	2.25mm	Copper	●	●	●	●	●	●	●	●	●	●
UB3617	Tapered Nozzle	12.0	2.25mm	Copper	●	●	●	●	●	●	●	●	●	●
UB5027	Cylindrical Nozzle	19.0	2.5mm	Copper	●	●	●	●	●	●	●	●	●	●
UB5028	Conical Nozzle	16.0	2.5mm	Copper	●	●	●	●	●	●	●	●	●	●
UB5028HD	Conical Nozzle	16.0	3.2mm	Copper	●	●	●	●	●	●	●	●	●	●
UB5029	Tapered Nozzle	14.0	2.5mm	Copper	●	●	●	●	●	●	●	●	●	●
UB6528	Conical Nozzle	17.0	2.6mm	Copper	●	●	●	●	●	●	●	●	●	●

● Standard wear part range ● Torch package standard wear part set-up

Wear Parts

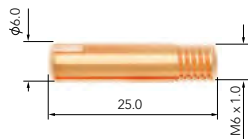


BZL Nozzles Adaptors

Part No.	Description	Material	PG150A	PG240A	PG250A	PG360A (PG380A, Aug)	PG380A	PG240W	PG401W	PG501W (PG501W Aug)	PG555W	PG605W
UB6515	Nozzle Adaptor	Brass										

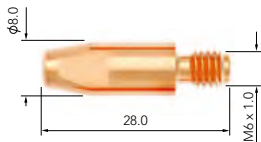
BZL Contact Tips

Part No.	Description	Material	Wire Size mm-inch	PG150A	PG240A	PG250A	PG360A (PG380A, Aug)	PG380A	PG240W	PG401W	PG501W (PG501W Aug)	PG555W	PG605W
M6x25													
UB1527-06	Contact Tip	Ecu	0.6-0.023										
UB1527-08	Contact Tip	Ecu	0.8-0.030										
UB1527-09	Contact Tip	Ecu	0.9-0.035										
UB1527-10	Contact Tip	Ecu	1.0-0.040										
UB1527-12	Contact Tip	Ecu	1.2-0.045										
UB1527-08A	Contact Tip	Ecu	0.8-0.030										
UB1527-09A	Contact Tip	Ecu	0.9-0.035										
UB1527-10A	Contact Tip	Ecu	1.0-0.040										



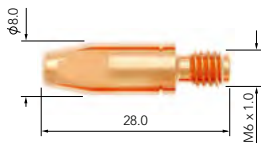
M6x28

UB2504-06	Contact Tip	Ecu	0.6-0.023										
UB2504-08	Contact Tip	Ecu	0.8-0.030										
UB2504-09	Contact Tip	Ecu	0.9-0.035										
UB2504-10	Contact Tip	Ecu	1.0-0.040										
UB2504-12	Contact Tip	Ecu	1.2-0.045										
UB2504-14	Contact Tip	Ecu	1.4-0.055										
UB2504-16	Contact Tip	Ecu	1.6-0.063										
UB2504-08A	Contact Tip	Ecu	0.8-0.030										
UB2504-10A	Contact Tip	Ecu	1.0-0.040										
UB2504-12A	Contact Tip	Ecu	1.2-0.045										
UB2504-16A	Contact Tip	Ecu	1.6-0.063										



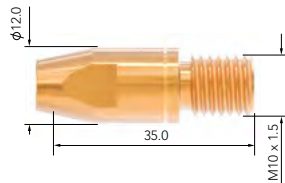
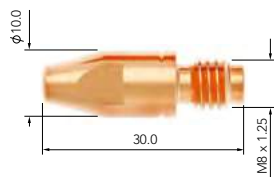
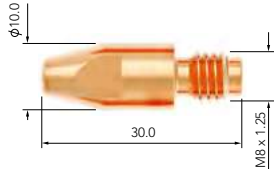
M6x28

UB2505-08	Contact Tip	CuCrZr	0.8-0.030										
UB2505-09	Contact Tip	CuCrZr	0.9-0.035										
UB2505-10	Contact Tip	CuCrZr	1.0-0.040										
UB2505-12	Contact Tip	CuCrZr	1.2-0.045										
UB2505-16	Contact Tip	CuCrZr	1.6-0.063										
UB2505-10A	Contact Tip	CuCrZr	1.0-0.040										
UB2505-12A	Contact Tip	CuCrZr	1.2-0.045										
UB2505-16A	Contact Tip	CuCrZr	1.6-0.063										



● Standard wear part range ● Torch package standard wear part set-up

Wear Parts



BZL Contact Tips

Part No.	Description	Material	Wire Size mm-inch	PG150A	PG240A	PG250A	PG360A (PG380A Alloy)	PG380A	PG240W	PG401W	PG501W (PG501W Alloy)	PG555W	PG605W
M6x30													
UB4014-08	Contact Tip	Ecu	0.8-0.030	●	●	●	●	●	●	●	●	●	●
UB4014-09	Contact Tip	Ecu	0.9-0.035	●	●	●	●	●	●	●	●	●	●
UB4014-10	Contact Tip	Ecu	1.0-0.040	●	●	●	●	●	●	●	●	●	●
UB4014-12	Contact Tip	Ecu	1.2-0.045	●	●	●	●	●	●	●	●	●	●
UB4014-14	Contact Tip	Ecu	1.4-0.055	●	●	●	●	●	●	●	●	●	●
UB4014-16	Contact Tip	Ecu	1.6-0.063	●	●	●	●	●	●	●	●	●	●
UB4014-20	Contact Tip	Ecu	2.0-0.080	●	●	●	●	●	●	●	●	●	●
UB4014-24	Contact Tip	Ecu	2.4-0.095	●	●	●	●	●	●	●	●	●	●
UB4014-10A	Contact Tip	Ecu	1.0-0.040	●	●	●	●	●	●	●	●	●	●
UB4014-12A	Contact Tip	Ecu	1.2-0.045	●	●	●	●	●	●	●	●	●	●
UB4014-16A	Contact Tip	Ecu	1.6-0.063	●	●	●	●	●	●	●	●	●	●
M8x30													
UB4015-08	Contact Tip	CuCrZr	0.8-0.030	●	●	●	●	●	●	●	●	●	●
UB4015-09	Contact Tip	CuCrZr	0.9-0.035	●	●	●	●	●	●	●	●	●	●
UB4015-10	Contact Tip	CuCrZr	1.0-0.040	●	●	●	●	●	●	●	●	●	●
UB4015-12	Contact Tip	CuCrZr	1.2-0.045	●	●	●	●	●	●	●	●	●	●
UB4015-14	Contact Tip	CuCrZr	1.4-0.055	●	●	●	●	●	●	●	●	●	●
UB4015-16	Contact Tip	CuCrZr	1.6-0.063	●	●	●	●	●	●	●	●	●	●
UB4015-24	Contact Tip	CuCrZr	2.4-0.095	●	●	●	●	●	●	●	●	●	●
UB4015-10A	Contact Tip	CuCrZr	1.0-0.040	●	●	●	●	●	●	●	●	●	●
UB4015-12A	Contact Tip	CuCrZr	1.2-0.045	●	●	●	●	●	●	●	●	●	●
UB4015-16A	Contact Tip	CuCrZr	1.6-0.063	●	●	●	●	●	●	●	●	●	●
UB4015-24A	Contact Tip	CuCrZr	2.4-0.095	●	●	●	●	●	●	●	●	●	●
M10x35													
UB6015-10	Contact Tip	CuCrZr	1.0-0.040	●	●	●	●	●	●	●	●	●	●
UB6015-12	Contact Tip	CuCrZr	1.2-0.045	●	●	●	●	●	●	●	●	●	●
UB6015-14	Contact Tip	CuCrZr	1.4-0.055	●	●	●	●	●	●	●	●	●	●
UB6015-16	Contact Tip	CuCrZr	1.6-0.063	●	●	●	●	●	●	●	●	●	●
UB6015-20	Contact Tip	CuCrZr	2.0-0.080	●	●	●	●	●	●	●	●	●	●
UB6015-24	Contact Tip	CuCrZr	2.4-0.095	●	●	●	●	●	●	●	●	●	●

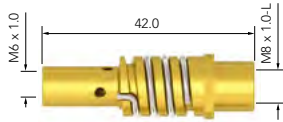
● Standard wear part range ● Torch package standard wear part set-up

Wear Parts

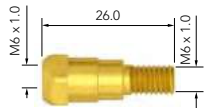
BZL Tip Adaptors

Part No. Description Material

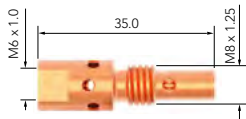
PG150A
PG240A
PG250A
PG360A
(PG380A, Aukey)
PG380A
PG240W
PG401W
PG501W
(PG501W, Aukey)
PG555W
PG605W



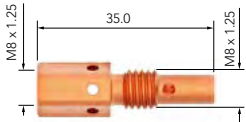
UB1507LH	Tip Adaptor Left-Hand	Brass	●																	
----------	-----------------------	-------	---	--	--	--	--	--	--	--	--	--	--	--	--	--	--	--	--	--



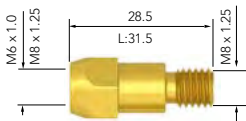
UB2412	Tip Adaptor	Brass		●						●										
--------	-------------	-------	--	---	--	--	--	--	--	---	--	--	--	--	--	--	--	--	--	--



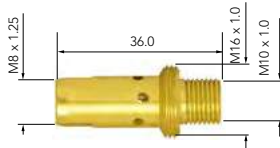
UB2506	Tip Adaptor	Brass				●														
--------	-------------	-------	--	--	--	---	--	--	--	--	--	--	--	--	--	--	--	--	--	--



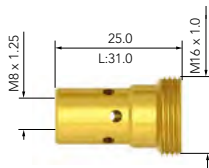
UB2536	Tip Adaptor	Brass					●													
--------	-------------	-------	--	--	--	--	---	--	--	--	--	--	--	--	--	--	--	--	--	--



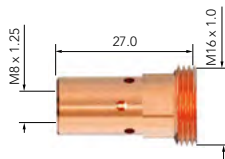
UB3612	Tip Adaptor 28.5mm M6	Brass					●													
UB3613	Tip Adaptor 31.5mm M6	Brass					●													
UB3614	Tip Adaptor 28.5mm M8	Brass					●													



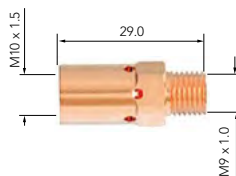
UB3812	Tip Adaptor	Brass							●											
--------	-------------	-------	--	--	--	--	--	--	---	--	--	--	--	--	--	--	--	--	--	--



UB5001	Tip Adaptor 25mm M8	Brass													●	●				
UB5001C	Tip Adaptor 25mm M8	CuCrZr													●	●				
UB5001L	Tip Adaptor Long	Brass													●	●				



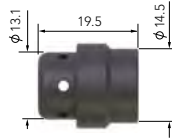
UB5501	Tip Adaptor	CuCrZr															●			
--------	-------------	--------	--	--	--	--	--	--	--	--	--	--	--	--	--	--	---	--	--	--



UB6501	Tip Adaptor	CuCrZr																●		
--------	-------------	--------	--	--	--	--	--	--	--	--	--	--	--	--	--	--	--	---	--	--

● Standard wear part range ● Torch package standard wear part set-up

Wear Parts



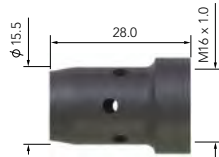
BZL Diffusers

Part No. Description Colour Material

				PG150A	PG240A	PG250A	PG360A (PG380A Alloy)	PG380A	PG240W	PG401W	PG501W (PG501W Alloy)	PG555W	PG605W
UB2405B	Diffuser	Black	DMC3	●	●	●	●	●	●	●	●	●	●
UB2405C	Diffuser	White	Ceramic	●	●	●	●	●	●	●	●	●	●
UB2405W	Diffuser	White	DMC3	●	●	●	●	●	●	●	●	●	●
UB2405S	Diffuser	Red	Silicon	●	●	●	●	●	●	●	●	●	●



UB3605B	Diffuser	Black	DMC3	●	●	●	●	●	●	●	●	●	●
UB3605C	Diffuser	White	Ceramic	●	●	●	●	●	●	●	●	●	●
UB3605H	Diffuser, High Performance	Black	HPP	●	●	●	●	●	●	●	●	●	●
UB3605W	Diffuser	White	DMC3	●	●	●	●	●	●	●	●	●	●



UB5005B	Diffuser	Black	DMC3	●	●	●	●	●	●	●	●	●	●
UB5005C	Diffuser	White	Ceramic	●	●	●	●	●	●	●	●	●	●
UB5005H	Diffuser, High Performance	Black	HPP	●	●	●	●	●	●	●	●	●	●
UB5005W	Diffuser	White	DMC3	●	●	●	●	●	●	●	●	●	●








UB6505H	Diffuser, High Temperature	Black	HPP	●	●	●	●	●	●	●	●	●	●
---------	----------------------------	-------	-----	---	---	---	---	---	---	---	---	---	---

● Standard wear part range ● Torch package standard wear part set-up

Wear Parts



BZL Liners

Part No.	Length	Description	Nipple	Wire Size mm	PG150A	PG240A	PG250A	PG360A (PG380A, Auger)	PG380A	PG240W	PG401W	PG501W (PG501W Auger)	PG555W	PG605W
														
UB1535-30	3.4mt	Steel Liner x 3mt	Moulded Nipple	0.6-0.9	●	●	●	●	●	●	●	●	●	●
UB1535-40	4.4mt	Steel Liner x 4mt	Moulded Nipple	0.6-0.9	●	●	●	●	●	●	●	●	●	●
UB1535-50	5.4mt	Steel Liner x 5mt	Moulded Nipple	0.6-0.9	●	●	●	●	●	●	●	●	●	●
														
UB1535-30B	3.4mt	Steel Liner x 3mt	Brass Nipple	0.6-0.9	●	●	●	●	●	●	●	●	●	●
UB1535-40B	4.4mt	Steel Liner x 4mt	Brass Nipple	0.6-0.9	●	●	●	●	●	●	●	●	●	●
UB1535-50B	5.4mt	Steel Liner x 5mt	Brass Nipple	0.6-0.9	●	●	●	●	●	●	●	●	●	●
														
UB1536-30	3.6mt	Teflon Liner x 3mt	Teflon Brass Nipple	0.6-0.9	●	●	●	●	●	●	●	●	●	●
UB1536-40	4.6mt	Teflon Liner x 4mt	Teflon Brass Nipple	0.6-0.9	●	●	●	●	●	●	●	●	●	●
UB1536-50	5.6mt	Teflon Liner x 5mt	Teflon Brass Nipple	0.6-0.9	●	●	●	●	●	●	●	●	●	●
UNE2564	0.3mt	Optional Bronze Neck Liner	Teflon Brass Nipple	0.6-1.2	●	●	●	●	●	●	●	●	●	●
														
UB1564-30	3.6mt	Polymaide / Brass Liner x 3mt 4.0mm O/D	Brass Nipple	0.8-1.2	●	●	●	●	●	●	●	●	●	●
UB1564-40	4.6mt	Polymaide / Brass Liner x 4mt 4.0mm O/D	Brass Nipple	0.8-1.2	●	●	●	●	●	●	●	●	●	●
UB1564-50	5.6mt	Polymaide / Brass Liner x 5mt 4.0mm O/D	Brass Nipple	0.8-1.2	●	●	●	●	●	●	●	●	●	●
														
UB2524-30	3.4mt	Steel Liner x 3mt	Moulded Nipple	1.0-1.2	●	●	●	●	●	●	●	●	●	●
UB2524-40	4.4mt	Steel Liner x 4mt	Moulded Nipple	1.0-1.2	●	●	●	●	●	●	●	●	●	●
UB2524-50	5.4mt	Steel Liner x 5mt	Moulded Nipple	1.0-1.2	●	●	●	●	●	●	●	●	●	●

● Standard wear part range ● Torch package standard wear part set-up

Wear Parts





BZL Liners

Part No.	Length	Description	Nipple	Wire Size mm	PG150A	PG240A	PG250A	PG360A (PG380A, Auger)	PG380A	PG240W	PG401W	PG501W (PG501W Auger)	PG555W	PG605W
														
UB2524-30B	3.4mt	Steel Liner x 3mt	Brass Nipple	1.0-1.2	●	●	●	●	●	●	●	●	●	●
UB2524-40B	4.4mt	Steel Liner x 4mt	Brass Nipple	1.0-1.2	●	●	●	●	●	●	●	●	●	●
UB2524-50B	5.4mt	Steel Liner x 5mt	Brass Nipple	1.0-1.2	●	●	●	●	●	●	●	●	●	●
														
UB2513-30	3.6mt	Teflon Liner x 3mt	Teflon Brass Nipple	1.0-1.2	●	●	●	●	●	●	●	●	●	●
UB2513-40	4.6mt	Teflon Liner x 4mt	Teflon Brass Nipple	1.0-1.2	●	●	●	●	●	●	●	●	●	●
UB2513-50	5.6mt	Teflon Liner x 5mt	Teflon Brass Nipple	1.0-1.2	●	●	●	●	●	●	●	●	●	●
UNE2564	0.3mt	Optional Bronze Neck Liner	Brass Nipple	1.2-1.6	●	●	●	●	●	●	●	●	●	●
														
UB2564-30	3.6mt	Polyamide / Brass Liner x 3mt 4.7mm O/D	Brass Nipple	1.2-1.6	●	●	●	●	●	●	●	●	●	●
UB2564-40	4.6mt	Polyamide / Brass Liner x 4mt 4.7mm O/D	Brass Nipple	1.2-1.6	●	●	●	●	●	●	●	●	●	●
UB2564-50	5.6mt	Polyamide / Brass Liner x 5mt 4.7mm O/D	Brass Nipple	1.2-1.6	●	●	●	●	●	●	●	●	●	●
														
UB3631-30	3.4mt	Steel Liner x 3mt	Moulded Nipple	1.6	●	●	●	●	●	●	●	●	●	●
UB3631-40	4.4mt	Steel Liner x 4mt	Moulded Nipple	1.6	●	●	●	●	●	●	●	●	●	●
UB3631-50	5.4mt	Steel Liner x 5mt	Moulded Nipple	1.6	●	●	●	●	●	●	●	●	●	●

● Standard wear part range ● Torch package standard wear part set-up

Wear Parts

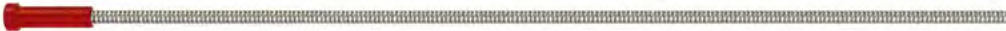



BZL Liners

Part No.	Length	Description	Nipple	Wire Size mm	PG150A	PG240A	PG250A	PG360A (PG380W Aug)	PG380A	PG240W	PG401W	PG501W (PG501W Aug)	PG555W	PG605W
														
UB3631-30B	3.4mt	Steel Liner x 3mt	Brass Nipple	1.6-2.0	●	●	●	●	●	●	●	●	●	●
UB3631-40B	4.4mt	Steel Liner x 4mt	Brass Nipple	1.6-2.0	●	●	●	●	●	●	●	●	●	●
UB3631-50B	5.4mt	Steel Liner x 5mt	Brass Nipple	1.6-2.0	●	●	●	●	●	●	●	●	●	●
														
UB3626-30	3.6mt	Teflon Liner x 3mt	Teflon Brass Nipple	1.2-1.6	●	●	●	●	●	●	●	●	●	●
UB3626-40	4.6mt	Teflon Liner x 4mt	Teflon Brass Nipple	1.2-1.6	●	●	●	●	●	●	●	●	●	●
UB3626-50	5.6mt	Teflon Liner x 5mt	Teflon Brass Nipple	1.2-1.6	●	●	●	●	●	●	●	●	●	●
UNE3564	0.3mt	Optional Bronze Neck Liner	Brass Nipple	1.6-2.0	●	●	●	●	●	●	●	●	●	●
														
UB3564-30	3.6mt	Polyamide / Brass Liner x 3mt 4.7mm O/D	Brass Nipple	1.6-2.0	●	●	●	●	●	●	●	●	●	●
UB3564-40	4.6mt	Polyamide / Brass Liner x 4mt 4.7mm O/D	Brass Nipple	1.6-2.0	●	●	●	●	●	●	●	●	●	●
UB3564-50	5.6mt	Polyamide / Brass Liner x 5mt 4.7mm O/D	Brass Nipple	1.6-2.0	●	●	●	●	●	●	●	●	●	●
														
UB4631-30B	3.5mt	Steel Liner x 3mt	Brass Nipple	2.0-2.4	●	●	●	●	●	●	●	●	●	●
UB4631-40B	4.5mt	Steel Liner x 4mt	Brass Nipple	2.0-2.4	●	●	●	●	●	●	●	●	●	●
UB4631-50B	5.5mt	Steel Liner x 5mt	Brass Nipple	2.0-2.4	●	●	●	●	●	●	●	●	●	●

● Standard wear part range ● Torch package standard wear part set-up

Wear Parts

BZL Liners

Part No.	Length	Description	Nipple	Wire Size mm	PG150A	PG240A	PG250A	PG360A (PG380A Auger)	PG380A	PG240W	PG401W	PG501W (PG501W Auger)	PG555W	PG605W
														
UB5033-30	3.5mt	Steel Liner x 3mt	Moulded Nipple	1.0-1.2	●	●	●	●	●	●	●	●	●	●
UB5033-40	4.5mt	Steel Liner x 4mt	Moulded Nipple	1.0-1.2	●	●	●	●	●	●	●	●	●	●
UB5033-50	5.5mt	Steel Liner x 5mt	Moulded Nipple	1.0-1.2	●	●	●	●	●	●	●	●	●	●
														
UB5033-30B	3.5mt	Steel Liner x 3mt	Brass Nipple	1.0-1.2	●	●	●	●	●	●	●	●	●	●
UB5033-40B	4.5mt	Steel Liner x 4mt	Brass Nipple	1.0-1.2	●	●	●	●	●	●	●	●	●	●
UB5033-50B	5.5mt	Steel Liner x 5mt	Brass Nipple	1.0-1.2	●	●	●	●	●	●	●	●	●	●
UB5033-80B	8.5mt	Steel Liner x 8mt	Brass Nipple	1.0-1.2	●	●	●	●	●	●	●	●	●	●
														
UB5034-30	3.5mt	Steel Liner x 3mt	Moulded Nipple	1.2-1.6	●	●	●	●	●	●	●	●	●	●
UB5034-40	4.5mt	Steel Liner x 4mt	Moulded Nipple	1.2-1.6	●	●	●	●	●	●	●	●	●	●
UB5034-50	5.5mt	Steel Liner x 5mt	Moulded Nipple	1.2-1.6	●	●	●	●	●	●	●	●	●	●
														
UB5034-30B	3.5mt	Steel Liner x 3mt	Brass Nipple	1.2-1.6	●	●	●	●	●	●	●	●	●	●
UB5034-40B	4.5mt	Steel Liner x 4mt	Brass Nipple	1.2-1.6	●	●	●	●	●	●	●	●	●	●
UB5034-50B	5.5mt	Steel Liner x 5mt	Brass Nipple	1.2-1.6	●	●	●	●	●	●	●	●	●	●
UB5034-80B	8.5mt	Steel Liner x 8mt	Brass Nipple	1.2-1.6	●	●	●	●	●	●	●	●	●	●

● Standard wear part range ● Torch package standard wear part set-up

Customized Branding

The Progrip series of Mig torches are offered in black and grey as standard.

Subject to minimum order quantities, handles are available in various colours and styles can be built to order.

There are 2 styles of handle available.

Softgrip Series 2 - Standard Label 1 Size: 38x10mm



PRO-BLK/GRY

Integrated Softgrip Series 2 - Optional Upgrade Label 1 Size: 38x10mm



PRO-BLK/BLK



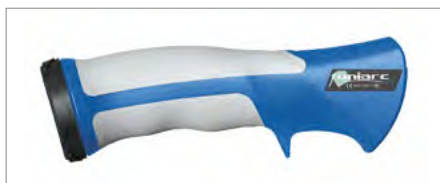
PRO-BLU/BLK



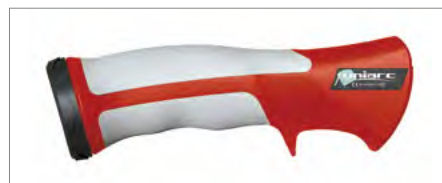
PRO-BLK/RED



PRO-BLK/YEL



PRO-BLU/GRY



PRO-RED/GRY



PRO-BLK/ORG

Note: Minimum Order Quantities apply

To discuss options available please contact us on info@uniarc.com.cn
Colours maybe restricted dependent on market

Softgrip Series 1 - Optional Upgrade Label 2 Size: 23.5x7.5mm



PRL-BLK/GRY



PRL-BLK/BLK



PRL-BLU/BLK



PRL-BLK/RED



PRL-BLK/YEL



PRL-BLU/GRY



PRL-RED/GRY



PRL-BLK/ORG

Note: Minimum Order Quantities apply

Customized Trigger Options:



Standard

PRO-GRY



PRO-YEL



PRO-BLK



PRO-RED

Note: Minimum Order Quantities apply

To discuss options available please contact us on info@uniarc.com.cn
Colours maybe restricted dependent on market

Customized Branding

Customized Handle Label Options:

Enhance your product image further with brandable handle stickers.

Template



Label 1 Size: 38x10mm

Example



Label 1 Size: 38x10mm



Label 2 Size: 23.5x7.5mm



Label 2 Size: 23.5x7.5mm

Available in PVC or Gel material

Note: Minimum Order Quantities Apply

Packaging Options

Products are supplied in plain white boxes as standard.

Boxes and bespoke packaging is available subject to minimum order quantities and additional costs.



To discuss options available please contact us on info@uniarc.com.cn
Colours maybe restricted dependend on market

Welding & Cutting Torch Technology

Floor 1 & 2, No.358, Gang Xing Er Road
Jinan Area of China (Shandong) Pilot Free Trade Zone
Jinan 250102
P.R. China

Tel: +86 531 88239823
Fax: +86 531 88239398
Website: www.uniarc.com.cn
Email: uniarc@uniarc.com.cn
MPU001 / V.2025.04