



Welding & Cutting Torch Technology

Product Catalogue

BZL Proline Series



About Us

Uniarc is part of a group of companies specializing in the production of Welding and Cutting torches.

With over 40 years experience, the group is positioned as a global leader at the heart of the welding torch industry.

Originally established in the United Kingdom in the 1980's, the company is now a fully-fledged, vertically integrated Chinese product innovator and manufacturer.

Our customers span a full cross section of the industry, ranging from general distribution to leading global original equipment manufacturers.

Our products are used in a broad cross-section of industrial sectors ranging from auto body repair to ship building.

Whether you need a standard off the shelf product or a customized branded option with your own colours, logos and packaging we have a one stop solution for your requirements.

Our team are here to help, contact us today if you need anymore information.



find out more www.uniarctorchology.com

Contents

Features Focus	2
Range Overview	4

Torch Model

Proline PL150A	6
Proline PL240A	7
Proline PL250A	8
Proline PL360A	9
Proline PL501W	10

Wear Parts

BZL Nozzles	11
BZL Contact Tips	13
BZL Tip Adaptors	14
BZL Diffusers	14
BZL Liners	15

Customized Branding Options

Handle Options	18
Trigger Options	18
Label Options	19

BZL Proline Mig / Mag Air-Cooled Series

Entry Level

Features Focus

Entry Level torches offered in a neutral brand, with the option to customize with your own colours and packaging, giving your brand a presence that truly stands out.

Consumable Parts

All wear and spare parts are fully interchangeable with the OEM.

Medium Ergo Trigger Assembly

Rapid field servicing ensured by a simple 'plug and play' system.

Switches can be exchanged in 5 seconds.

Knuckle Joint and Cable Support

Small movements of the handle and neck are possible independent of the cable assembly.



Spring Pins

Fitted with unbreakable spring loaded gun plug body pins.

Rear Cable Support

Cable support systems ensure smooth and consistent wire feed at any angle.

Swan Necks

Manufactured to the same specification as the OEM.

Ergo Handle

Screwless ergonomic design solutions combine the ultimate in balance and positioning.



Cable Systems

Lite cable sets offer a 30-40% weight saving at equivalent performance levels.

The outer jacket is constructed from cross-linked polymers providing a tear proof outer with a burn threshold of 375°C.



Gun Plug Housing

Tough and damage resistant, housings and nuts are formed in robust glass-reinforced polymers encasing all conductive parts in accordance with EN60974-7.

BZL Proline Mig / Mag Liquid-Cooled Series

Entry Level



Features Focus

Entry Level torches offered in a neutral brand, with the option to customize with your own colours and packaging giving your brand a presence that truly stands out.

Consumable Parts

All wear and spare parts are fully interchangeable with the OEM.

Medium Ergo Trigger Assembly

Rapid field servicing ensured by a simple 'plug and play' system.

Switches can be exchanged in 5 seconds.

Knuckle Joint and Cable Support

Small movements of the handle and neck are possible independent of the cable assembly.

Swan Necks

Manufactured to the same specification as the OEM.

Ergo Handle

Screwless ergonomic design solutions combine the ultimate in balance and positioning.



Spring Pins

Fitted with unbreakable spring loaded gun plug body pins.



Cable Systems

Liquid-Cooled systems use PVC cables and are colour-coded for ease of identification.

Unique cable end geometries ensure leak free terminations.



Water In/Out Supports

Fitted as standard to ensure delivery and flow rate of coolants.

Rear Cable Support

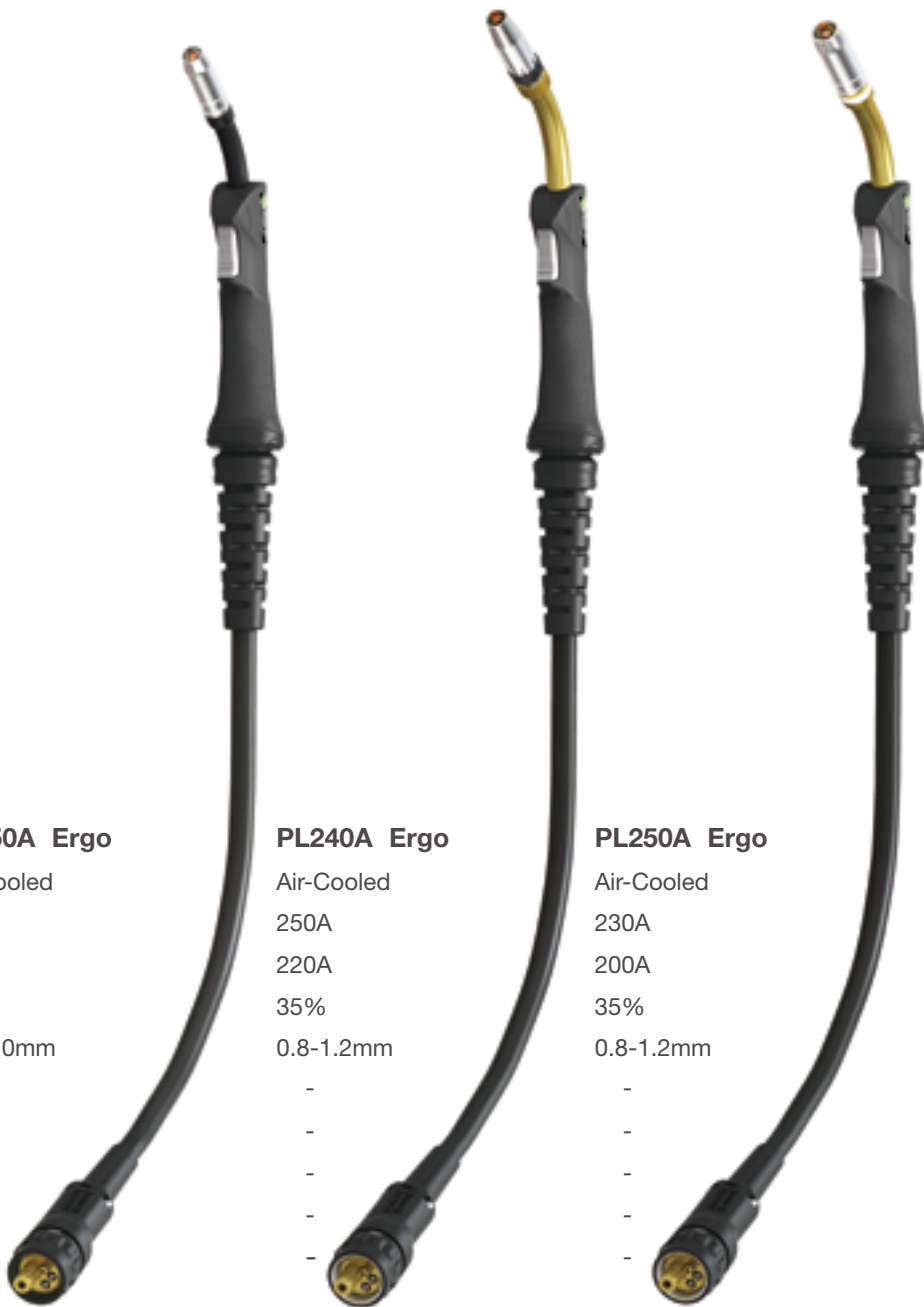
Extra length cable support systems ensure smooth and consistent wire feed at any angle.

Gun Plug Housing

Tough and damage resistant, housings and nuts are formed in robust glass-reinforced polymers encasing all conductive parts in accordance with EN60974-7.

BZL Proline Mig / Mag Torch Series

Ratings: 150 Amp to 450 Amp, Mixed Gas M21



Technical Data	PL150A Ergo	PL240A Ergo	PL250A Ergo
Cooling Method	Air-Cooled	Air-Cooled	Air-Cooled
Rating: CO ₂	180A	250A	230A
Rating: Mixed Gas M21	150A	220A	200A
Duty Cycle:	35%	35%	35%
Wire Size:	0.6-1.0mm	0.8-1.2mm	0.8-1.2mm
Minimum Water Flow	-	-	-
Minimum Water Inlet Pressure	-	-	-
Minimum Cooling Requirements	-	-	-
Maximum Water Inlet Pressure	-	-	-
Maximum Water Inlet Temperature	-	-	-

Order Codes	3mt	PLB1500-30ER	PLB2400-30ER	PLB2500-30ER
	4mt	PLB1500-40ER	PLB2400-40ER	PLB2500-40ER
	5mt	PLB1500-50ER	PLB2400-50ER	PLB2500-50ER

PL360A Ergo

Air-Cooled

320A

290A

35%

0.8-1.2mm

-

-

-

-

-

PL501W Ergo

Liquid-Cooled

500A

450A

60%

1.0-1.6mm

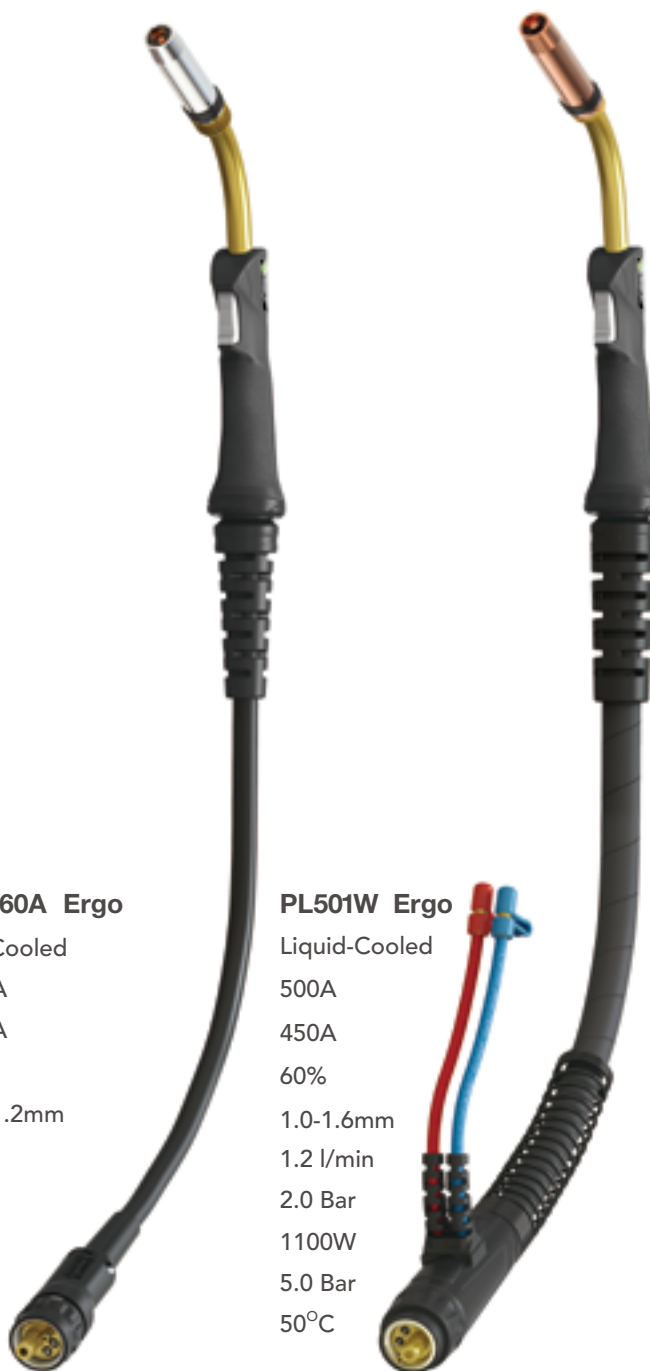
1.2 l/min

2.0 Bar

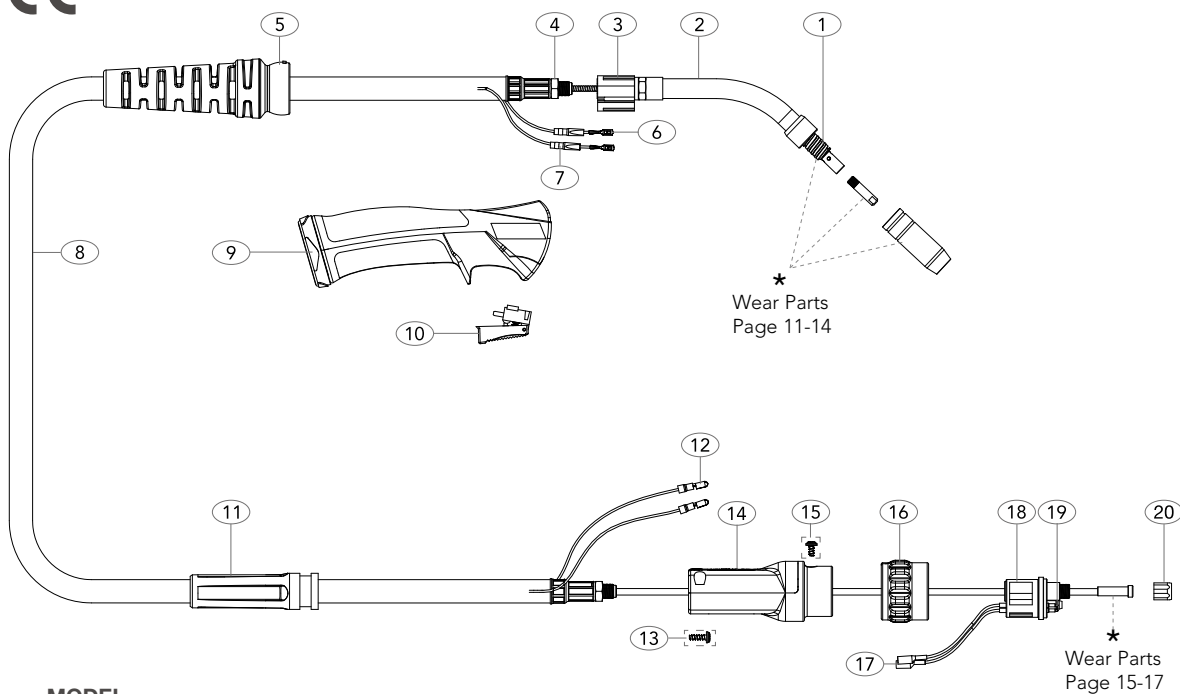
1100W

5.0 Bar

50°C



Order Codes	3mt	PLB3600-30ER	PLB5000-30ER
	4mt	PLB3600-40ER	PLB5000-40ER
	5mt	PLB3600-50ER	PLB5000-50ER



MODEL

Description	Part Number		
Proline Torch Package c/w Black Handle	3mt PLB1500-30ER	4mt PLB1500-40ER	5mt PLB1500-50ER

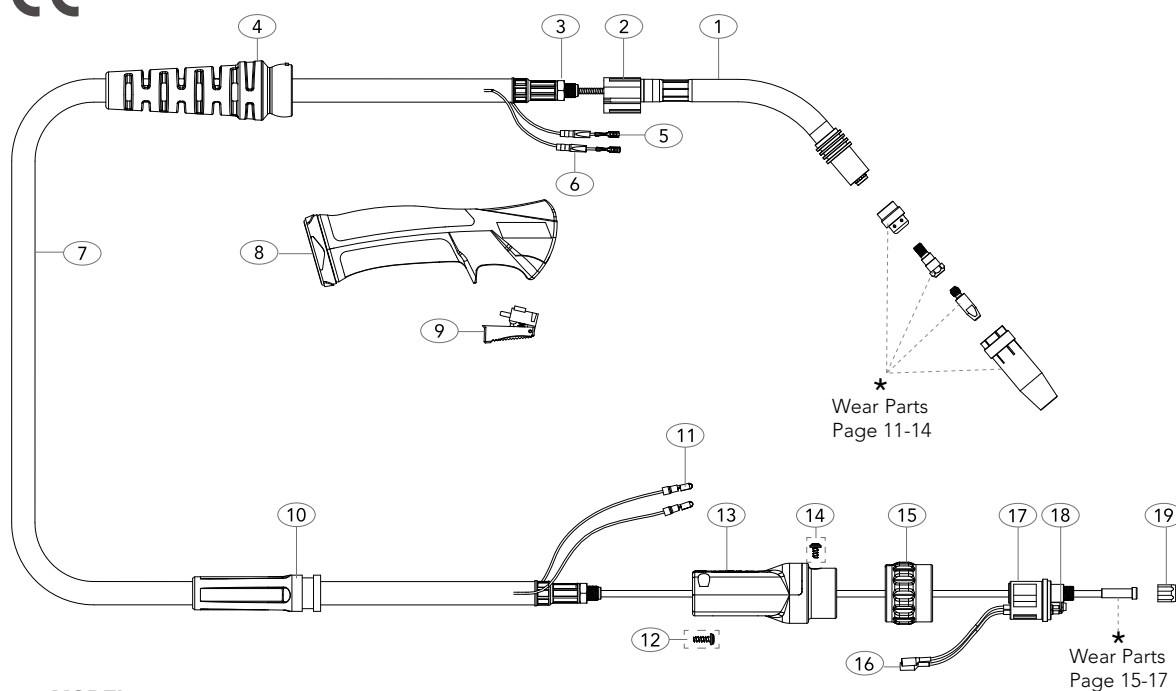
SPARE PARTS

Part Number	Description	Part Number	Description
1 UB1504	Shroud Spring	14 UC1518	Gun Plug Body Housing
2 UB1501	Swan Neck Assembly	15 UBL1541	Gun Plug Screw
3 UG1515	Ergo Handle Location Body	16 UC1519/P	Gun Plug Nut
4 UB1505	Lock Nut	17 UB1523	Gun Plug Terminal Female
5 UG8015/BK	Handle Cable Support c/w Ball Joint	18 UC1528	Hybrid Gun Plug Body c/w Spring Pins
6 UB1521	Cable Terminal	19 UB1524	Gun Plug 'O' Ring
7 UB1521-C	Cable Terminal Cover	20 UB1525	Liner Nut
8 PLDU1517-30	Duraflex Ultralite Cable Assembly x 3mt		
PLDU1517-40	Duraflex Ultralite Cable Assembly x 4mt		
PLDU1517-50	Duraflex Ultralite Cable Assembly x 5mt		
9 UBG2514	Ergo Handle Kit c/w Lock Nut		
10 UG2516	Trigger		
11 UC2841	Cable Support		
12 UB1522	Cable Terminal Male		
13 UB1542	Gun Plug Housing Screw		

**Standard products can be fully
customized and branded**

PL240A Air-Cooled Mig Welding Torch

Rating: 250A CO₂ 220A mixed gas M21, EN60974-7 @ 35% duty cycle. 0.8 to 1.2mm wires



MODEL

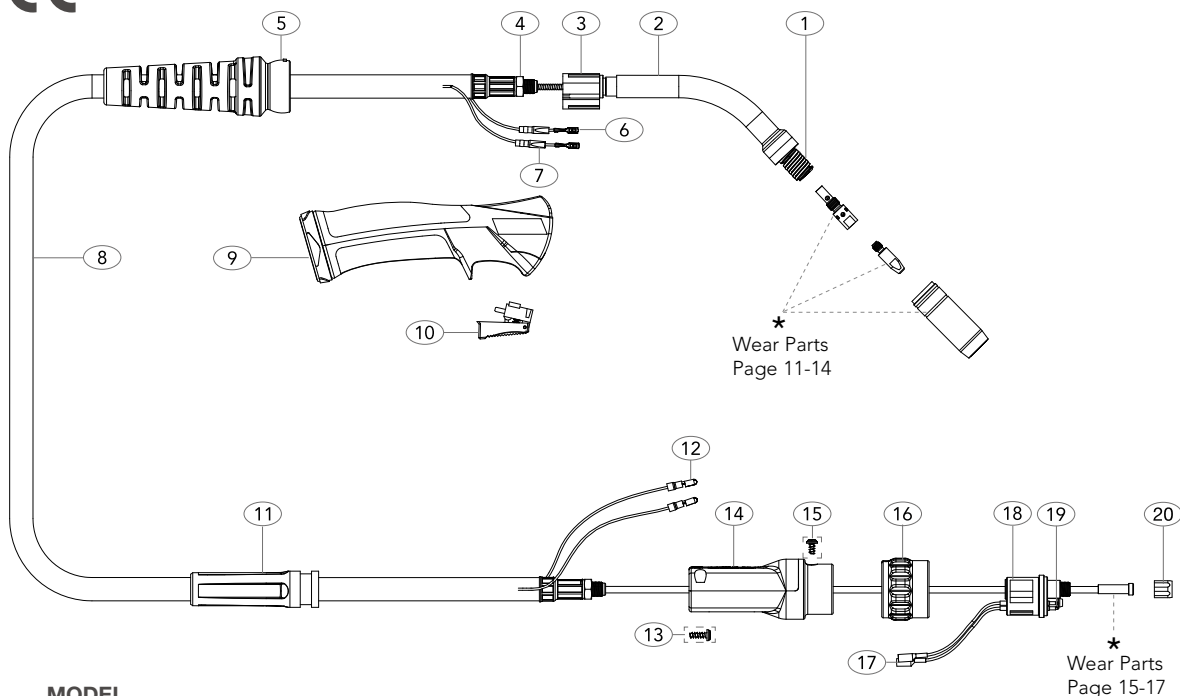
Description	Part Number		
Proline Torch Package c/w Black Handle	3mt PLB2400-30ER	4mt PLB2400-40ER	5mt PLB2400-50ER

SPARE PARTS

Part Number	Description	Part Number	Description
1 UC2401	Swan Neck Assembly	14 UBL1541	Gun Plug Screw
2 UG1515	Ergo Handle Location Body	15 UC1519/S	Gun Plug Nut
3 UB1505	Lock Nut	16 UB1523	Gun Plug Terminal Female
4 UG8015/BK	Handle Cable Support c/w Ball Joint	17 UC1528	Hybrid Gun Plug Body c/w Spring Pins
5 UB1521	Cable Terminal	18 UB1524	Gun Plug 'O' Ring
6 UB1521-C	Cable Terminal Cover	19 UB1525	Liner Nut
7 PLDU2603-30	Duraflex Ultralite Cable Assembly x 3mt		
PLDU2603-40	Duraflex Ultralite Cable Assembly x 4mt		
PLDU2603-50	Duraflex Ultralite Cable Assembly x 5mt		
8 UBG2514	Handle Kit c/w Lock Nut		
9 UG2516	Trigger		
10 UC2841	Cable Support		
11 UB1522	Cable Terminal Male		
12 UB1542	Gun Plug Housing Screw		
13 UC1518	Gun Plug Body Housing		

**Standard products can be fully
customized and branded**

All products conform to EN60974-7, **CE** and are RoHS2, REACH and WEEE compliant



MODEL

Description	Part Number		
Proline Torch Package c/w Black Handle	3mt PLB2500-30ER	4mt PLB2500-40ER	5mt PLB2500-50ER

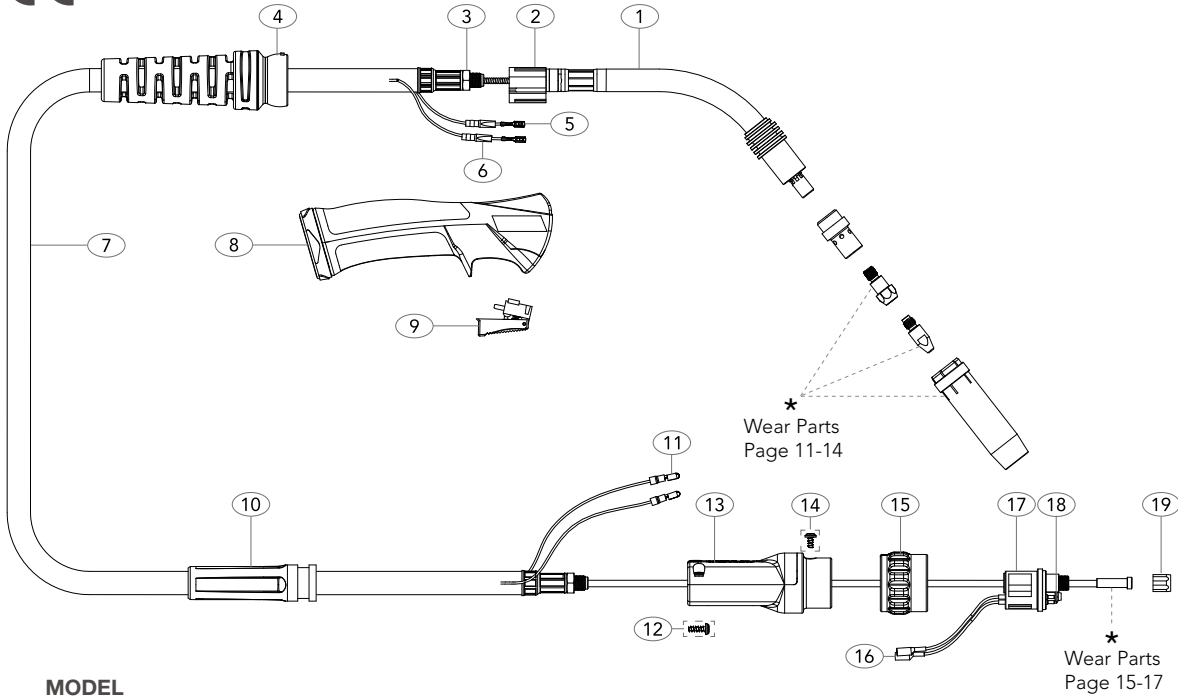
SPARE PARTS

Part Number	Description	Part Number	Description
1 UB2502	Shroud Spring	14 UC1518	Gun Plug Body Housing
2 UB2501	Swan Neck Assembly	15 UBL1541	Gun Plug Screw
3 UG1515	Ergo Handle Location Body	16 UC1519/S	Gun Plug Nut
4 UB1505	Lock Nut	17 UB1523	Gun Plug Terminal Female
5 UG8015/BK	Handle Cable Support c/w Ball Joint	18 UC1528	Hybrid Gun Plug Body c/w Spring Pins
6 UB1521	Cable Terminal	19 UB1524	Gun Plug 'O' Ring
7 UB1521-C	Cable Terminal Cover	20 UB1525	Liner Nut
8 PLDU2503-30	Duraflex Ultralite Cable Assembly x 3mt		
PLDU2503-40	Duraflex Ultralite Cable Assembly x 4mt		
PLDU2503-50	Duraflex Ultralite Cable Assembly x 5mt		
9 UBG2514	Ergo Handle Kit c/w Lock Nut		
10 UG2516	Trigger		
11 UC2841	Cable Support		
12 UB1522	Cable Terminal Male		
13 UB1542	Gun Plug Housing Screw		

**Standard products can be fully
customized and branded**

PL360A Proline Air-Cooled Mig Welding Torch

Rating: 320A CO₂ 290A mixed gas M21, EN60974-7 @ 35% duty cycle. 0.8 to 1.2mm wires



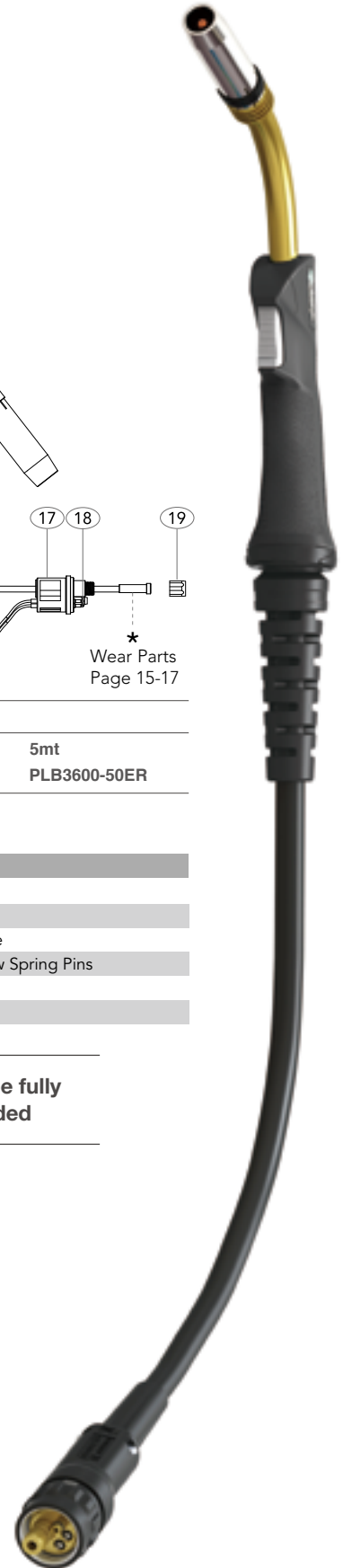
MODEL

Description	Part Number		
Proline Torch Package c/w Black Handle	3mt PLB3600-30ER	4mt PLB3600-40ER	5mt PLB3600-50ER

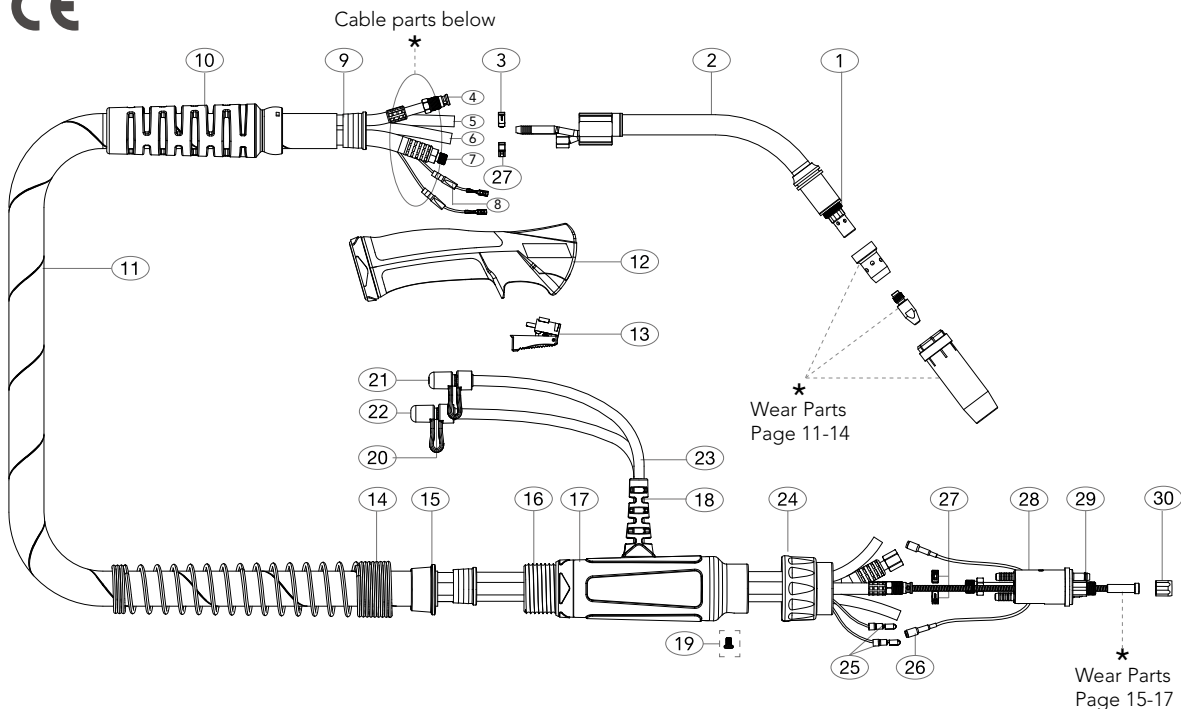
SPARE PARTS

Part Number	Description	Part Number	Description
1 UC3603	Swan Neck Assembly	14 UBL1541	Gun Plug Screw
2 UG1515	Ergo Handle Location Body	15 UC1519/S	Gun Plug Nut
3 UB1505	Lock Nut	16 UB1523	Gun Plug Terminal Female
4 UG8016/BK	Handle Cable Support c/w Ball Joint	17 UC1528	Hybrid Gun Plug Body c/w Spring Pins
5 UB1521	Cable Terminal	18 UB1524	Gun Plug 'O' Ring
6 UB1521-C	Cable Terminal Cover	19 UB1525	Liner Nut
7 PLDU3609-30	Duraflex Ultralite Cable Assembly x 3mt		
PLDU3609-40	Duraflex Ultralite Cable Assembly x 4mt		
PLDU3609-50	Duraflex Ultralite Cable Assembly x 5mt		
8 UBG2514	Ergo Handle Kit c/w Lock Nut		
9 UG2516	Trigger		
10 UC3641	Cable Support		
11 UB1522	Cable Terminal Male		
12 UB1542	Gun Plug Housing Screw		
13 UC1518	Gun Plug Body Housing		

Standard products can be fully
customized and branded



All products conform to EN60974-7, **CE** and are RoHS2, REACH and WEEE compliant



MODEL

Description	Part Number		
Proline Ergo Torch Package	3mt	4mt	5mt
	PLB5000-30ER	PLB5000-40ER	PLB5000-50ER

SPARE PARTS

Part Number	Description
1 UB5003	Insulating Washer
2 UG5002	Swan Neck Assembly
3 15400020	Hose Clamp 8.7mm
9 UG8010	Canvas Cover Retainer Small
10 UG3208/BK	Handle Cable Support c/w Ball Joint
11 PL5006-30	Cable Assembly x 3mt
PL5006-40	Cable Assembly x 4mt
PL5006-50	Cable Assembly x 5mt
12 UBG2514	Ergo Handle Kit c/w Lock Nut
13 UG2516	Trigger
14 UC8027	Housing Spring
15 UT8009	Canvas Cover Clamp
16 UT8028	Spring Cable Support Nut
17 UT5022	Gun Plug Housing Assembly
18 USLH1820-S	Inlet/Outlet Hose Support
19 UB1526	Gun Plug Screw
20 UB5023A	Water Hose Nipple
21 UBD-80320	Red Cap Stopper
22 UBD-80310	Blue Cap Stopper
23 UC5017	Water Outlet Hose PVC
24 UB1519/S	Gun Plug Nut
25 UB1522	Cable Terminal Male
26 UB1523	Gun Plug Terminal Female

CABLE PARTS

Description	Part Number		
	3mt	4mt	5mt
4 Outer Liner Assembly	UC5008-30	UC5008-40	UC5008-50
5 Gas Hose Assembly	UB5013-30	UB5013-40	UB5013-50
6 Water Inlet Hose Assy	UC5012-30	UC5012-40	UC5012-50
7 Power Cable Assembly	PL5015-30-N	PL5015-40-N	PL5015-50-N
8 Switch Lead Assembly	UB5010-30	UB5010-40	UB5010-50

Standard products can be fully customized and branded

All products conform to EN60974-7, **CE** and are RoHS2, REACH and WEEE compliant

Wear Parts

BZL Eco Nozzles

Part No. Description Bore Wall Material

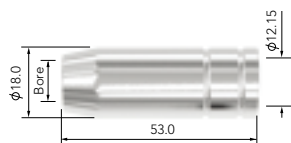
PL150A

PL240A

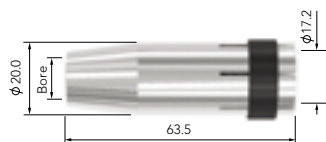
PL250A

PL360A

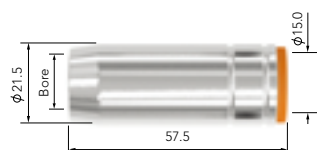
PL501W



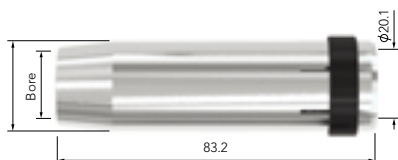
UC1530	Conical Nozzle	12.0	0.9mm	Brass	●	●	●	●	●
--------	----------------	------	-------	-------	---	---	---	---	---



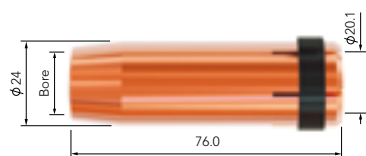
UC2415	Cylindrical Nozzle	17.2	1.4mm	Brass	●	●	●	●	●
UC2416	Conical Nozzle	12.6	1.4mm	Brass	●	●	●	●	●
UC2417	Tapered Nozzle	10.0	1.4mm	Brass	●	●	●	●	●



UC2507	Cylindrical Nozzle	19.0	1.25mm	Brass	●	●	●	●	●
UC2508	Conical Nozzle	15.0	1.25mm	Brass	●	●	●	●	●
UC2509	Tapered Nozzle	12.0	1.25mm	Brass	●	●	●	●	●



UC3615	Cylindrical Nozzle	20.1	1.7mm	Brass	●	●	●	●	●
UC3616	Conical Nozzle	16.0	1.7mm	Brass	●	●	●	●	●
UC3617	Tapered Nozzle	12.0	1.7mm	Brass	●	●	●	●	●



UC5027	Cylindrical Nozzle	20.1	1.95mm	Copper	●	●	●	●	●
UC5028	Conical Nozzle	16.0	1.95mm	Copper	●	●	●	●	●
UC5029	Tapered Nozzle	14.0	1.95mm	Copper	●	●	●	●	●

● Standard wear part range ● Torch package standard wear part set-up

Wear Parts

BZL Premium Nozzles

Part No. Description Bore Wall Material

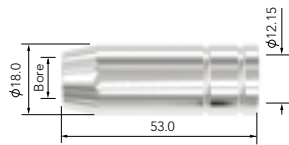
PL150A

PL240A

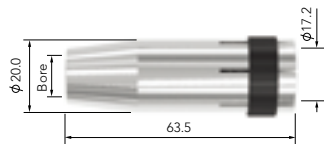
PL250A

PL360A

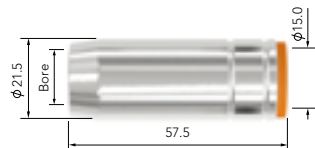
PL501W



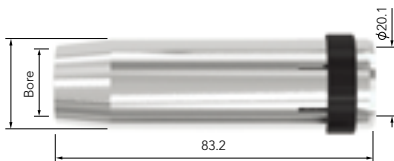
UB1529	Cylindrical Nozzle	16.2	0.9mm	Copper	●	●	●	●	●
UB1530	Conical Nozzle	12.0	0.9mm	Copper	●	●	●	●	●
UB1531	Tapered Nozzle	10.6	0.9mm	Copper	●	●	●	●	●
UB1532	Bottle Nozzle	12.8	0.9mm	Copper	●	●	●	●	●
UB1533	Spot Welding Nozzle	16.2	0.9mm	Copper	●	●	●	●	●



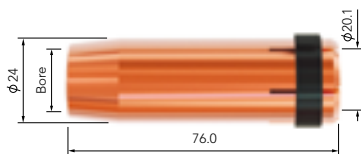
UB2415	Cylindrical Nozzle	17.2	1.4mm	Copper	●	●	●	●	●
UB2416	Conical Nozzle	12.6	1.4mm	Copper	●	●	●	●	●
UB2417	Tapered Nozzle	10.0	1.4mm	Copper	●	●	●	●	●



UB2507	Cylindrical Nozzle	18.5	1.5mm	Copper	●	●	●	●	●
UB2508	Conical Nozzle	15.0	1.5mm	Copper	●	●	●	●	●
UB2509	Tapered Nozzle	12.0	1.5mm	Copper	●	●	●	●	●
UB2510	Bottle Nozzle	14.5	1.5mm	Copper	●	●	●	●	●
UB2511	Spot Welding Nozzle	18.0	1.5mm	Copper	●	●	●	●	●



UB3615	Cylindrical Nozzle	19.0	2.25mm	Copper	●	●	●	●	●
UB3616	Conical Nozzle	16.0	2.25mm	Copper	●	●	●	●	●
UB3617	Tapered Nozzle	12.0	2.25mm	Copper	●	●	●	●	●



UB5027	Cylindrical Nozzle	19.0	2.25mm	Copper	●	●	●	●	●
UB5028	Conical Nozzle	16.0	2.25mm	Copper	●	●	●	●	●
UB5029	Tapered Nozzle	14.0	2.25mm	Copper	●	●	●	●	●

● Standard wear part range ● Torch package standard wear part set-up

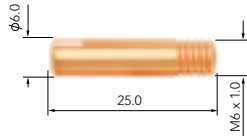
Wear Parts

BZL Contact Tips

Part No.	Description	Material	Wire Size mm-inch	PL150A	PL240A	PL250A	PL360A	PL501W
----------	-------------	----------	----------------------	--------	--------	--------	--------	--------

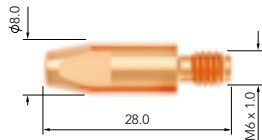
M6x25

UB1527-06	Contact Tip	Ecu	0.6-0.023	●	●	●	●	●
UB1527-08	Contact Tip	Ecu	0.8-0.030	●	●	●	●	●
UB1527-09	Contact Tip	Ecu	0.9-0.035	●	●	●	●	●
UB1527-10	Contact Tip	Ecu	1.0-0.040	●	●	●	●	●
UB1527-12	Contact Tip	Ecu	1.2-0.045	●	●	●	●	●
UB1527-08A	Contact Tip	Ecu	0.8-0.030	●	●	●	●	●
UB1527-09A	Contact Tip	Ecu	0.9-0.035	●	●	●	●	●
UB1527-10A	Contact Tip	Ecu	1.0-0.040	●	●	●	●	●



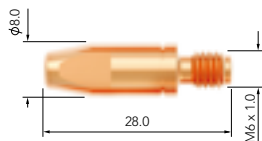
M6x28

UB2504-06	Contact Tip	Ecu	0.6-0.023	●	●	●	●	●
UB2504-08	Contact Tip	Ecu	0.8-0.030	●	●	●	●	●
UB2504-09	Contact Tip	Ecu	0.9-0.035	●	●	●	●	●
UB2504-10	Contact Tip	Ecu	1.0-0.040	●	●	●	●	●
UB2504-12	Contact Tip	Ecu	1.2-0.045	●	●	●	●	●
UB2504-14	Contact Tip	Ecu	1.4-0.055	●	●	●	●	●
UB2504-16	Contact Tip	Ecu	1.6-0.063	●	●	●	●	●
UB2504-08A	Contact Tip	Ecu	0.8-0.030	●	●	●	●	●
UB2504-09A	Contact Tip	Ecu	0.9-0.035	●	●	●	●	●
UB2504-10A	Contact Tip	Ecu	1.0-0.040	●	●	●	●	●
UB2504-12A	Contact Tip	Ecu	1.2-0.045	●	●	●	●	●



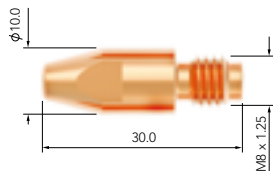
M6x28

UB2505-08	Contact Tip	CuCrZr	0.8-0.030	●	●	●	●	●
UB2505-09	Contact Tip	CuCrZr	0.9-0.035	●	●	●	●	●
UB2505-10	Contact Tip	CuCrZr	1.0-0.040	●	●	●	●	●
UB2505-12	Contact Tip	CuCrZr	1.2-0.045	●	●	●	●	●
UB2505-16	Contact Tip	CuCrZr	1.6-0.063	●	●	●	●	●



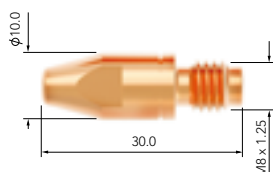
M8x30

UB4014-08	Contact Tip	Ecu	0.8-0.030	●	●	●	●	●
UB4014-09	Contact Tip	Ecu	0.9-0.035	●	●	●	●	●
UB4014-10	Contact Tip	Ecu	1.0-0.040	●	●	●	●	●
UB4014-12	Contact Tip	Ecu	1.2-0.045	●	●	●	●	●
UB4014-14	Contact Tip	Ecu	1.4-0.055	●	●	●	●	●
UB4014-16	Contact Tip	Ecu	1.6-0.063	●	●	●	●	●
UB4014-20	Contact Tip	Ecu	2.0-0.080	●	●	●	●	●
UB4014-24	Contact Tip	Ecu	2.4-0.095	●	●	●	●	●
UB4014-10A	Contact Tip	Ecu	1.0-0.040	●	●	●	●	●
UB4014-12A	Contact Tip	Ecu	1.2-0.045	●	●	●	●	●
UB4014-16A	Contact Tip	Ecu	1.6-0.063	●	●	●	●	●



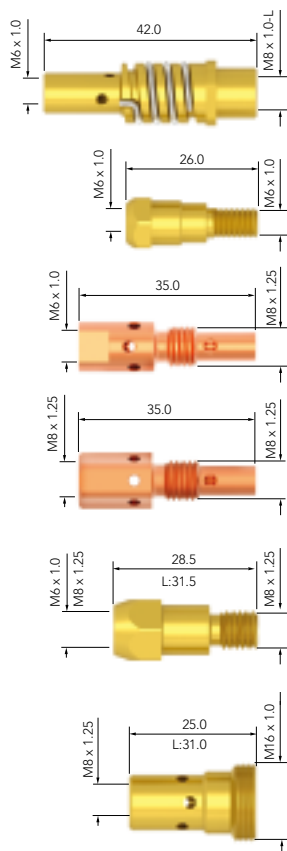
M8x30

UB4015-08	Contact Tip	CuCrZr	0.8-0.030	●	●	●	●	●
UB4015-09	Contact Tip	CuCrZr	0.9-0.035	●	●	●	●	●
UB4015-10	Contact Tip	CuCrZr	1.0-0.040	●	●	●	●	●
UB4015-12	Contact Tip	CuCrZr	1.2-0.045	●	●	●	●	●
UB4015-14	Contact Tip	CuCrZr	1.4-0.055	●	●	●	●	●
UB4015-16	Contact Tip	CuCrZr	1.6-0.063	●	●	●	●	●
UB4015-24	Contact Tip	CuCrZr	2.4-0.095	●	●	●	●	●



● Standard wear part range ● Torch package standard wear part set-up

Wear Parts



BZL Tip Adaptors

Part No.	Description	Material	PL150A	PL240A	PL250A	PL360A	PL501W
UB1507L/H	Tip Adaptor Left Hand	Brass	●	●	●	●	●
UB2412	Tip Adaptor	Brass	●	●	●	●	●
UB2506	Tip Adaptor	Brass	●	●	●	●	●
UB2536	Tip Adaptor	Brass	●	●	●	●	●
UB3612	Tip Adaptor 28.5mm M6	Brass	●	●	●	●	●
UB3613	Tip Adaptor 31.5mm M6	Brass	●	●	●	●	●
UB3614	Tip Adaptor 28.5mm M8	Brass	●	●	●	●	●
UB5001	Tip Adaptor 25mm M8	Brass	●	●	●	●	●
UB5001C	Tip Adaptor 25mm M8	CuCrZr	●	●	●	●	●
UB5001L	Tip Adaptor Long	Brass	●	●	●	●	●







BZL Diffusers

Part No.	Description	Colour	Material	PL150A	PL240A	PL250A	PL360A	PL501W
UB2405B	Diffuser	Black	DMC3	●	●	●	●	●
UB2405C	Diffuser	White	Ceramic	●	●	●	●	●
UB2405W	Diffuser	White	DMC3	●	●	●	●	●
UB3605B	Diffuser	Black	DMC3	●	●	●	●	●
UB3605C	Diffuser	White	Ceramic	●	●	●	●	●
UB3605W	Diffuser	White	DMC3	●	●	●	●	●
UB5005B	Diffuser	Black	DMC3	●	●	●	●	●
UB5005C	Diffuser	White	Ceramic	●	●	●	●	●
UB5005W	Diffuser	White	DMC3	●	●	●	●	●

● Standard wear part range ● Torch package standard wear part set-up

Wear Parts





BZL Liners

Part No.	Length	Description	Nipple	Wire Size mm	BL150A	BL240A	BL250A	BL360A	BL501W
									
UB1535-30	3.4mt	Steel Liner x 3mt	Moulded Nipple	0.6-0.9	●	●	●	●	●
UB1535-40	4.4mt	Steel Liner x 4mt	Moulded Nipple	0.6-0.9	●	●	●	●	●
UB1535-50	5.4mt	Steel Liner x 5mt	Moulded Nipple	0.6-0.9	●	●	●	●	●
									
UB1535-30B	3.4mt	Steel Liner x 3mt	Brass Nipple	0.6-0.9	●	●	●	●	●
UB1535-40B	4.4mt	Steel Liner x 4mt	Brass Nipple	0.6-0.9	●	●	●	●	●
UB1535-50B	5.4mt	Steel Liner x 5mt	Brass Nipple	0.6-0.9	●	●	●	●	●
 									
UB1536-30	3.6mt	Teflon Liner x 3mt	Teflon Brass Nipple	0.6-0.9	●	●	●	●	●
UB1536-40	4.6mt	Teflon Liner x 4mt	Teflon Brass Nipple	0.6-0.9	●	●	●	●	●
UB1536-50	5.6mt	Teflon Liner x 5mt	Teflon Brass Nipple	0.6-0.9	●	●	●	●	●
UNE1564	0.3mt	Optional Bronze Neck Liner	Brass Nipple	0.8-1.2	●	●	●	●	●
									
UB1564-30	3.6mt	Polyamide / Brass Liner x 3mt 4.0mm O/D	Brass Nipple	0.8-1.2	●	●	●	●	●
UB1564-40	4.6mt	Polyamide / Brass Liner x 4mt 4.0mm O/D	Brass Nipple	0.8-1.2	●	●	●	●	●
UB1564-50	5.6mt	Polyamide / Brass Liner x 5mt 4.0mm O/D	Brass Nipple	0.8-1.2	●	●	●	●	●
									
UB2524-30	3.4mt	Steel Liner x 3mt	Moulded Nipple	1.0-1.2	●	●	●	●	●
UB2524-40	4.4mt	Steel Liner x 4mt	Moulded Nipple	1.0-1.2	●	●	●	●	●
UB2524-50	5.4mt	Steel Liner x 5mt	Moulded Nipple	1.0-1.2	●	●	●	●	●

● Standard wear part range ● Torch package standard wear part set-up

Wear Parts







BZL Liners

Part No.	Length	Description	Nipple	Wire Size mm	BL150A	BL240A	BL250A	BL360A	BL501W
									
UB2524-30B	3.4mt	Steel Liner x 3mt	Brass Nipple	1.0-1.2	●	●	●	●	●
UB2524-40B	4.4mt	Steel Liner x 4mt	Brass Nipple	1.0-1.2	●	●	●	●	●
UB2524-50B	5.4mt	Steel Liner x 5mt	Brass Nipple	1.0-1.2	●	●	●	●	●
									
UB2513-30	3.6mt	Teflon Liner x 3mt	Teflon Brass Nipple	1.0-1.2	●	●	●	●	●
UB2513-40	4.6mt	Teflon Liner x 4mt	Teflon Brass Nipple	1.0-1.2	●	●	●	●	●
UB2513-50	5.6mt	Teflon Liner x 5mt	Teflon Brass Nipple	1.0-1.2	●	●	●	●	●
UNE1564	0.3mt	Optional Bronze Neck Liner	Brass Nipple	0.8-1.2	●	●	●	●	●
									
UB2564-30	3.6mt	Polyamide/Brass Liner x 3mt 4.8mm O/D	Brass Nipple	1.2-1.6	●	●	●	●	●
UB2564-40	4.6mt	Polyamide/Brass Liner x 4mt 4.8mm O/D	Brass Nipple	1.2-1.6	●	●	●	●	●
UB2564-50	5.6mt	Polyamide/Brass Liner x 5mt 4.8mm O/D	Brass Nipple	1.2-1.6	●	●	●	●	●
									
UB3631-30	3.4mt	Steel Liner x 3mt	Moulded Nipple	1.6	●	●	●	●	●
UB3631-40	4.4mt	Steel Liner x 4mt	Moulded Nipple	1.6	●	●	●	●	●
UB3631-50	5.4mt	Steel Liner x 5mt	Moulded Nipple	1.6	●	●	●	●	●
									
UB3631-30B	3.4mt	Steel Liner x 3mt	Brass Nipple	1.6	●	●	●	●	●
UB3631-40B	4.4mt	Steel Liner x 4mt	Brass Nipple	1.6	●	●	●	●	●
UB3631-50B	5.4mt	Steel Liner x 5mt	Brass Nipple	1.6	●	●	●	●	●

● Standard wear part range ● Torch package standard wear part set-up

Wear Parts

BZL Liners

Part No.	Length	Description	Nipple	Wire Size mm	BL150A	BL240A	BL250A	BL360A	BL501W
									
UB3626-30	3.6mt	Teflon Liner x 3mt	Teflon Brass Nipple	1.2-1.6	●	●	●	●	●
UB3626-40	4.6mt	Teflon Liner x 4mt	Teflon Brass Nipple	1.2-1.6	●	●	●	●	●
UB3626-50	5.6mt	Teflon Liner x 5mt	Teflon Brass Nipple	1.2-1.6	●	●	●	●	●
UNE2564	0.3mt	Optional Bronze Neck Liner	Brass Nipple	1.2-1.6	●	●	●	●	●
									
UB3564-30	3.6mt	Polyamide/Brass Liner x 3mt 4.8mm O/D	Brass Nipple	1.6-2.0	●	●	●	●	●
UB3564-40	4.6mt	Polyamide/Brass Liner x 4mt 4.8mm O/D	Brass Nipple	1.6-2.0	●	●	●	●	●
UB3564-50	5.6mt	Polyamide/Brass Liner x 5mt 4.8mm O/D	Brass Nipple	1.6-2.0	●	●	●	●	●
									
UB5033-30	3.5mt	Steel Liner x 3mt	Moulded Nipple	1.0-1.2	●	●	●	●	●
UB5033-40	4.5mt	Steel Liner x 4mt	Moulded Nipple	1.0-1.2	●	●	●	●	●
UB5033-50	5.5mt	Steel Liner x 5mt	Moulded Nipple	1.0-1.2	●	●	●	●	●
									
UB5033-30B	3.5mt	Steel Liner x 3mt	Brass Nipple	1.0-1.2	●	●	●	●	●
UB5033-40B	4.5mt	Steel Liner x 4mt	Brass Nipple	1.0-1.2	●	●	●	●	●
UB5033-50B	5.5mt	Steel Liner x 5mt	Brass Nipple	1.0-1.2	●	●	●	●	●
									
UB5034-30	3.5mt	Steel Liner x 3mt	Moulded Nipple	1.2-1.6	●	●	●	●	●
UB5034-40	4.5mt	Steel Liner x 4mt	Moulded Nipple	1.2-1.6	●	●	●	●	●
UB5034-50	5.5mt	Steel Liner x 5mt	Moulded Nipple	1.2-1.6	●	●	●	●	●
									
UB5034-30B	3.5mt	Steel Liner x 3mt	Brass Nipple	1.2-1.6	●	●	●	●	●
UB5034-40B	4.5mt	Steel Liner x 4mt	Brass Nipple	1.2-1.6	●	●	●	●	●
UB5034-50B	5.5mt	Steel Liner x 5mt	Brass Nipple	1.2-1.6	●	●	●	●	●

● Standard wear part range ● Torch package standard wear part set-up

The Proline series of Mig torches are offered in black as standard.

Subject to minimum order quantities, handles are available in various colours and styles which can be built to order.

Standard Label 1 Size: 38x10mm



BA-BLK

Standard Label 1 Size: 38x10mm

Optional Upgrade



BA-BLU



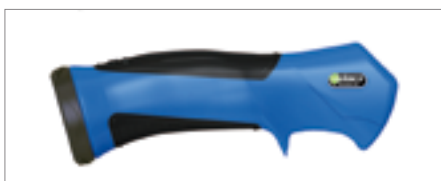
BA-RED

Customized Handle Options

Line Handle - Optional Upgrade Label 2 Size: 23.5x7.5mm



PRL-BLK/BLK



PRL-BLU/BLK



PRL-BLK/RED

Other Colour Options
Available on Request

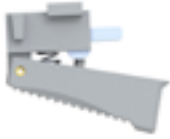
Note:
Minimum Order Quantities Apply

To discuss options available please contact us on info@uniarc.com.cn
Colours maybe restricted dependent on market

Customized Branding






Customized Trigger Options

 <p>Standard</p>	<p>Other Colour Options Available on Request</p>	<p>Note: Minimum Order Quantities Apply</p>
---	--	---

PRO-GRY

Customized Handle Label Options

Enhance your product image further with brandable handle stickers.

Template	Example
<div data-bbox="145 836 432 912"></div> <p>Label 1 Size: 38x10mm</p> <div data-bbox="483 858 663 912"></div> <p>Label 2 Size: 23.5x7.5mm</p>	<div data-bbox="879 836 1166 912"></div> <div data-bbox="1222 858 1402 912"></div> <p>Available in PVC or Gel Material</p>

Note: Minimum Order Quantities Apply

Packaging Options

All Proline series products are supplied in neutral plastic carrier bags as standard.



Bespoke packaging is available subject to minimum order quantities and additional costs.

To discuss options available please contact us on info@uniarc.com.cn
Colours may be restricted dependent on market

Welding & Cutting Torch Technology

JINAN UNIARC WELDING TECHNOLOGY CO., LTD

13A Zhangjin Comprehensive Bonded Zone
33688, Jing Shi Dong Road
Jinan Area of China (Shandong) Pilot Free Trade Zone
Jinan 250102, P.R. China

Tel: +86 531 88239823

Website: www.uniarctorchology.com

Email: info@uniarctorchology.com

MPU002 / V.2024.03