



Welding & Cutting Torch Technology

Product Catalogue

TRG Series



About Us

Uniarc is part of a group of companies specializing in the production of Welding and Cutting torches.

With over 40 years experience, the group is positioned as a global leader at the heart of the welding torch industry.

Originally established in the United Kingdom in the 1980's, the company is now a fully-fledged, vertically integrated Chinese product innovator and manufacturer.

Our customers span a full cross section of the industry, ranging from general distribution to leading global original equipment manufacturers.

Our products are used in a broad cross-section of industrial sectors ranging from auto body repair to ship building.

Whether you need a standard off the shelf product or a customized branded option with your own colours, logos and packaging we have a one stop solution for your requirements.

Our team are here to help, contact us today if you need anymore information.



find out more www.uniartorchology.com

Contents

Features Focus	2
Range Overview	3

Torch Model

TR200A	4
TR300A	5
TR400A	6
TR500A	7

Wear Parts

TRG Nozzles	8
TRG Contact Tips	9
TRG Diffusers	10
TRG Head	10
TRG Liners	11

Consumable Parts

All wear and spare parts are manufactured to the same specification as the OEM and are fully interchangeable.

Hanger Hook

A "plug and play" option, they encourage the operator to hang the torch off the ground where it is easy to locate.



Terminations

A comprehensive range of USA and European style terminations ensures worldwide compatibility.



Euro Terminations

Fitted with unbreakable spring loaded gun plug body pins.



Swan Necks

Manufactured to the same specification as the OEM.

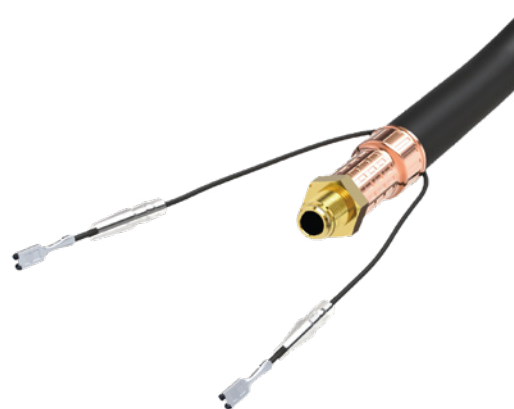
Handle System

Designed to combine balance, positioning and ergonomics with practical torch performance, cable life and consistent wire feed.

Air-Cooled Cable Systems

Cable assemblies offer outstanding flexibility with the highest heat and abrasion resistance of any known cable.

Cable end and crimp systems ensure maximum conductivity whilst the outer jacket is constructed from cross-linked polymers providing a tear proof outer with a burn threshold of 375°C.

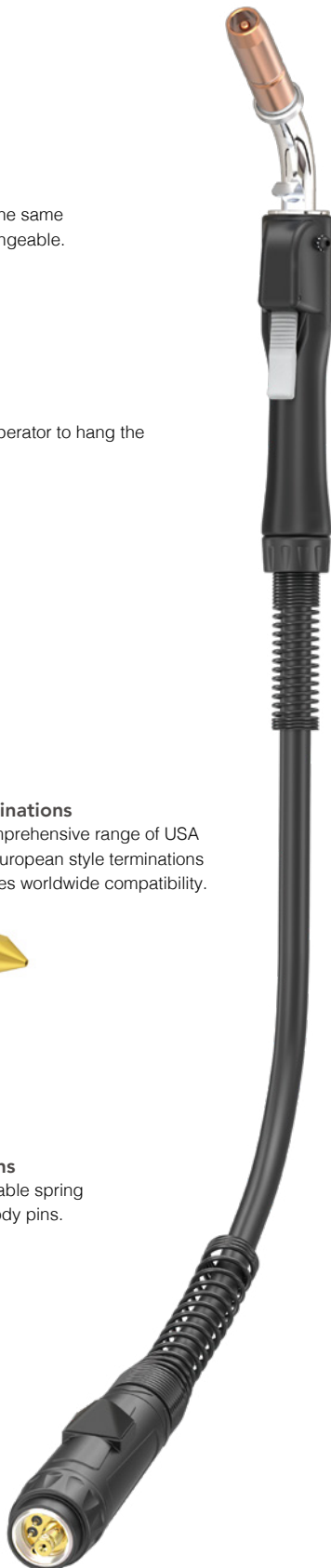


Rear Cable Support

Extra length cable support systems ensure smooth and consistent wire feed at any angle.

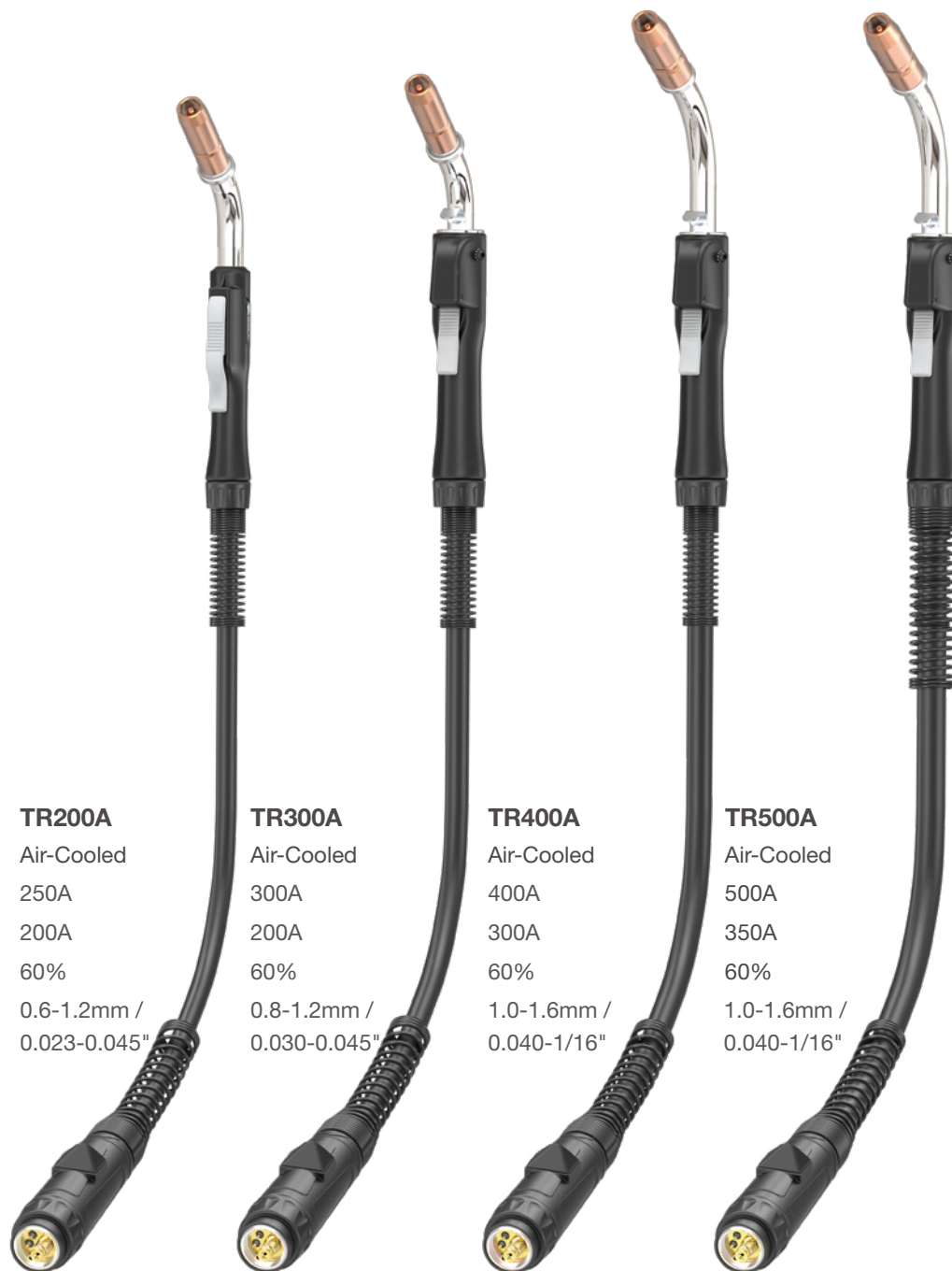
Housings, Nuts and Supports

Tough and damage resistant, housings and nuts are formed in robust glass-reinforced polymers encasing all conductive parts in accordance with EN60974-7.



TRG Mig / Mag Torch Series

Ratings: 200 Amp to 350 Amp, Mixed Gas M21



Technical Data

Cooling Method

Rating: CO₂

Rating: Mixed Gas M21

Duty Cycle:

Wire Size:

TR200A

Air-Cooled

250A

200A

60%

0.6-1.2mm /
0.023-0.045"

TR300A

Air-Cooled

300A

200A

60%

0.8-1.2mm /
0.030-0.045"

TR400A

Air-Cooled

400A

300A

60%

1.0-1.6mm /
0.040-1/16"

TR500A

Air-Cooled

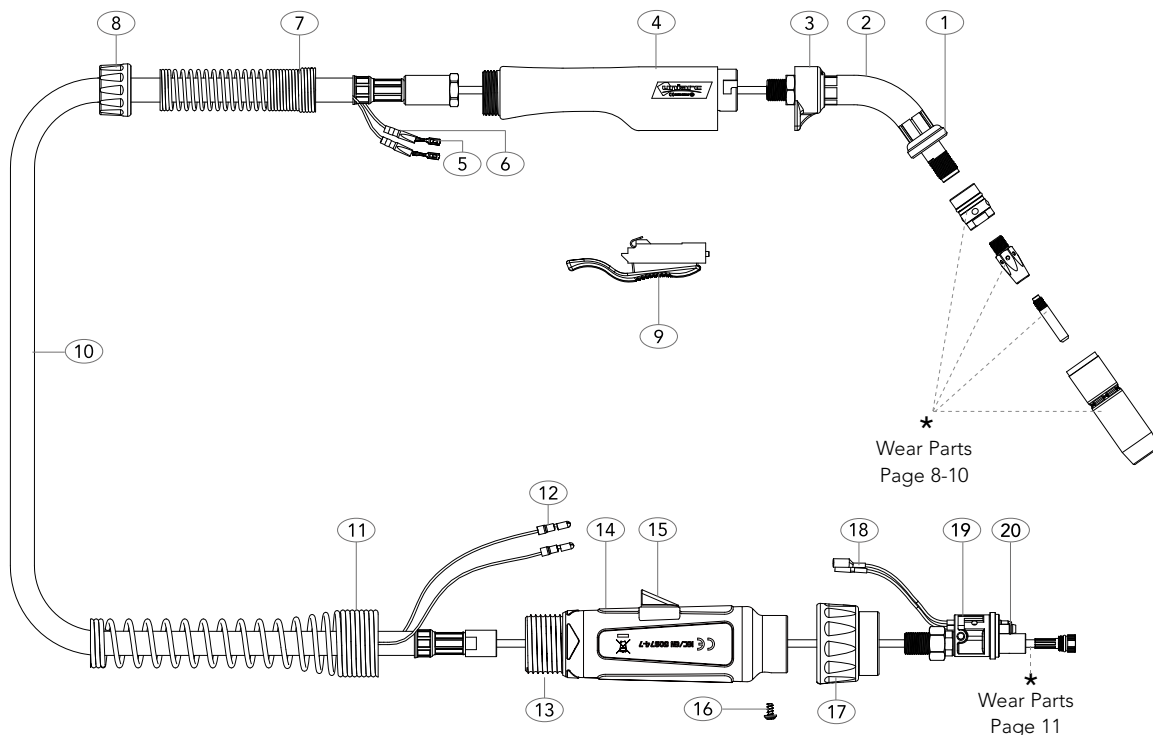
500A

350A

60%

1.0-1.6mm /
0.040-1/16"

Order Codes	10ft / 3mt	UT2010E	UT3010E	UT4010E	UT5010E
	12ft / 4mt	UT2012E	UT3012E	UT4012E	UT5012E
	15ft / 5mt	UT2015E	UT3015E	UT4015E	UT5015E



MODEL

Description	Part Number		
	3mt / 10ft	4mt / 12ft	5mt / 15ft
Welding Torch c/w Euro Fitting	UT2010E	UT2012E	UT2015E

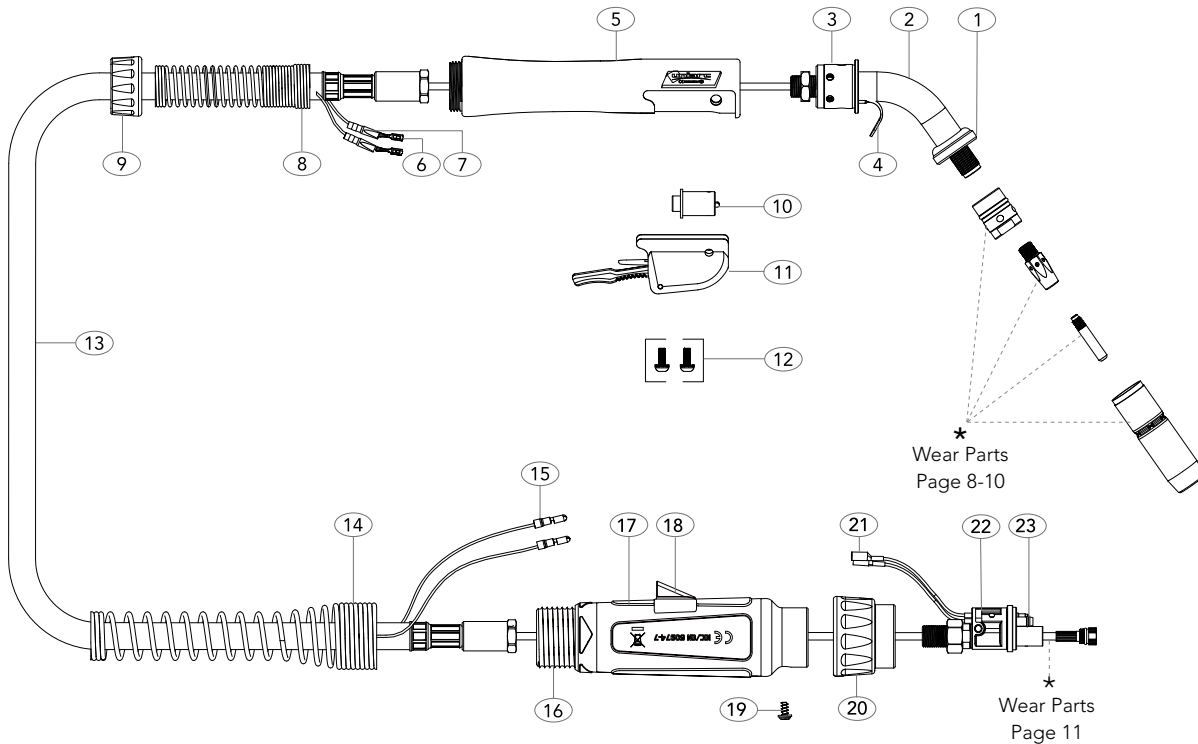
SPARE PARTS

Part Number	Description	Part Number	Description
1 U402-5	Shock Washer	15 SC8017	Large Housing Wire Cover
2 U205-60	Swan Neck	16 UBL1541	Gun Plug Screw
3 U210-6	Small Handle End Cap	17 UB1519/S	Gun Plug Nut
4 URA20017K	Handle And Lock Nut Assembly	18 UB1523	Gun Plug Terminal Female
5 UB1521	Cable Terminal	19 UC425-10K	Euro Gun Plug Body
6 UB1521-C	Cable Terminal Cover	20 UB1524	Gun Plug 'O' Ring
7 UTR8017	Cable Support		
8 UTR8003	Handle Lock Nut		
9 U211-5	Switch		
10 U213-10	Cable Assembly x 10ft		
U213-12	Cable Assembly x 12ft		
U213-15	Cable Assembly x 15ft		
11 UC8026	Housing Spring (Short)		
12 UB1522	Cable Terminal Male		
13 UT8028	Cable Support Nut		
14 UT5022	Large Housing		

Torches are available with various terminations
-please email info@uniarctorchology.com

TR300A Air-Cooled Mig Welding Torch

Rating: 300A CO₂ 200A mixed gas M21, EN60974-7 @ 60% duty cycle. 0.8 to 1.2mm / 0.030-0.045" wires



MODEL

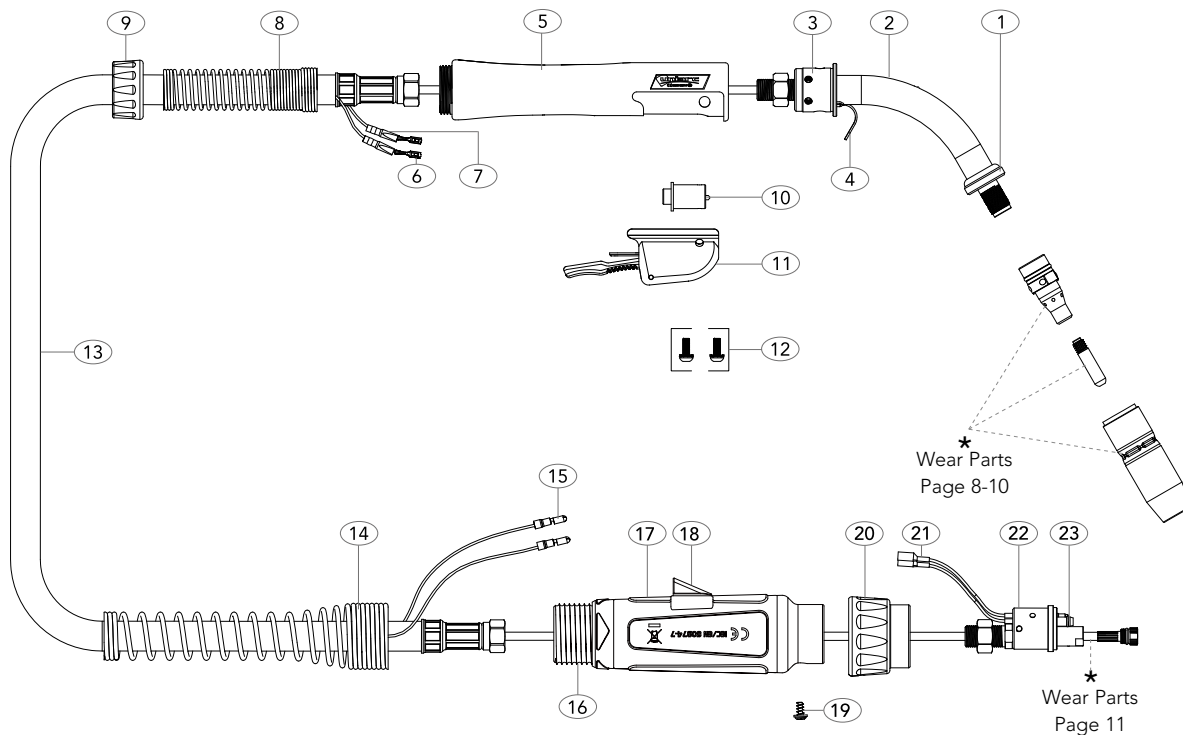
Description	Part Number		
	3mt / 10ft	4mt / 12ft	5mt / 15ft
Welding Torch c/w Euro Fitting	UT3010E	UT3012E	UT3015E

SPARE PARTS

Part Number	Description	Part Number	Description
1 U402-5	Shock Washer	15 UB1522	Cable Terminal Male
2 U305-60	Swan Neck	16 UT8028	Cable Support Nut
3 U407	Torch Body	17 UT5022	Large Housing
4 UB2517	Hanger Hook	18 SC8017	Large Housing Wire Cover
5 URA30017K	Handle And Lock Nut Assembly	19 UBL1541	Gun Plug Screw
6 UB1521	Cable Terminal	20 UB1519/S	Gun Plug Nut
7 UB1521-C	Cable Terminal Cover	21 UB1523	Gun Plug Terminal Female
8 UTR8018	Cable Support	22 UC425-10K	Euro Gun Plug Body
9 UTR8015	Handle Lock Nut	23 UB1524	Gun Plug 'O' Ring
10 U411-1	Switch		
11 URA30017Q	Switch Housing c/w Trigger		
12 U411-3	Screws c/w Washer		
13 U313-10	Cable Assembly x 10ft		
U313-12	Cable Assembly x 12ft		
U313-15	Cable Assembly x 15ft		
14 UC8026	Housing Spring (Short)		

Torches are available with various terminations
-please email info@uniarctorchology.com

All products conform to EN60974-7, **CE** and are RoHS2, REACH and WEEE compliant



MODEL

Description	Part Number		
	3mt / 10ft	4mt / 12ft	5mt / 15ft
Welding Torch c/w Euro Fitting	UT4010E	UT4012E	UT4015E

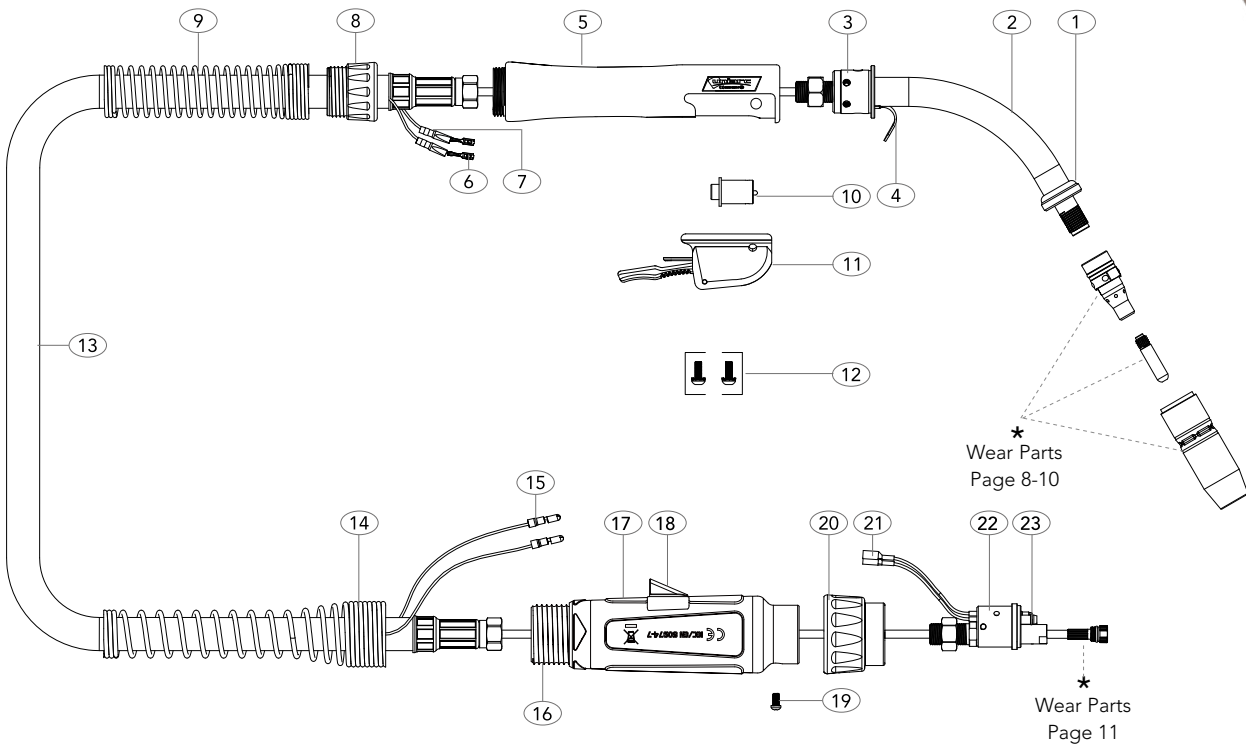
SPARE PARTS

Part Number	Description	Part Number	Description
1 U402-5	Shock Washer	15 UB1522	Cable Terminal Male
2 U405-60	Swan Neck	16 UT8028	Cable Support Nut
3 U407	Torch Body	17 UT5022	Large Housing
4 UB2517	Hanger Hook	18 SC8017	Large Housing Wire Cover
5 URA30017K	Handle And Lock Nut Assembly	19 UBL1541	Gun Plug Screw
6 UB1521	Cable Terminal	20 UB1519/S	Gun Plug Nut
7 UB1521-C	Cable Terminal Cover	21 UB1523	Gun Plug Terminal Female
8 UTR8018	Cable Support	22 UC425-10K	Euro Gun Plug Body
9 UTR8015	Handle Lock Nut	23 UB1524	Gun Plug 'O' Ring
10 U411-1	Switch		
11 URA30017Q	Switch Housing c/w Trigger		
12 U411-3	Screws with Washer		
13 U413-10	Cable Assembly x 10ft		
U413-12	Cable Assembly x 12ft		
U413-15	Cable Assembly x 15ft		
14 UC8026	Housing Spring (Short)		

Torches are available with various terminations
-please email info@uniarctorchology.com

TR500A Air-Cooled Mig Welding Torch

Rating: 500A CO₂ 350A mixed gas M21, EN60974-7 @ 60% duty cycle. 1.0 to 1.6mm / 0.040-1/16" wires



MODEL

Description	Part Number		
	3mt / 10ft	4mt / 12ft	5mt / 15ft
Welding Torch c/w Euro Fitting	UT5010E	UT5012E	UT5015E

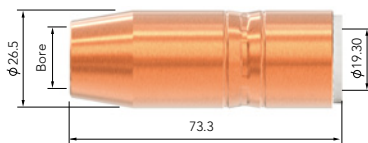
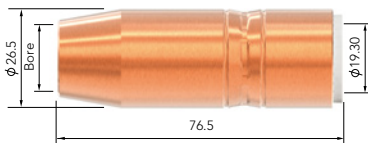
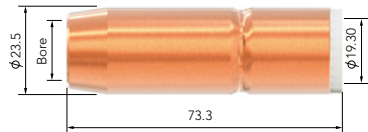
SPARE PARTS

Part Number	Description	Part Number	Description
1 U402-5	Shock Washer	15 UB1522	Cable Terminal Male
2 U505-60	Swan Neck	16 UT8028	Cable Spring Nut
3 U407	Torch Body	17 UT5022	Large Housing
4 UB2517	Hanger Hook	18 SC8017	Large Housing Wire Cover
5 URA30017K	Handle And Lock Nut Assembly	19 UB1526	Gun Plug Screw
6 UB1521	Cable Terminal	20 UB1519/S	Gun Plug Nut
7 UB1521-C	Cable Terminal Cover	21 UB1523	Gun Plug Terminal Female
8 URA50017F	Handle Lock Nut	22 UE425-10K	Euro Gun Plug Body
9 UTR8019	Cable Support	23 UB1524	Gun Plug 'O' Ring
10 U411-1	Switch		
11 URA30017Q	Switch Housing c/w Trigger		
12 U411-3	Screws c/w Washer		
13 U513-10	Cable Assembly x 10ft		
U513-12	Cable Assembly x 12ft		
U513-15	Cable Assembly x 15ft		
14 UC8026	Housing Spring (Short)		

Torches are available with various terminations
-please email info@uniarctorchology.com

All products conform to EN60974-7, **CE** and are RoHS2, REACH and WEEE compliant

Wear Parts



TRG Nozzles

Part No.	Description	Bore	Wall	Material	TR200A	TR300A	TR400A	TR500A
U401-4-38	1/8" Recess Tip 3/8" Bore Nozzle	9.50	2.25mm	Copper	●	●	●	●
U401-4-50	1/8" Recess Tip 1/2" Bore Nozzle	12.7	2.25mm	Copper	●	●	●	●
U401-4-62	1/8" Recess Tip 5/8" Bore Nozzle	16.0	2.25mm	Copper	●	●	●	●
U401-4-75	1/8" Recess Tip 3/4" Bore Nozzle	19.0	2.25mm	Copper	●	●	●	●

U401-5-50	1/4" Recess Tip 1/2" Bore Nozzle	12.7	2.4mm	Copper	●	●	●	●
U401-5-62	1/4" Recess Tip 5/8" Bore Nozzle	16.0	2.4mm	Copper	●	●	●	●
U401-5-75	1/4" Recess Tip 3/4" Bore Nozzle	19.0	2.4mm	Copper	●	●	●	●

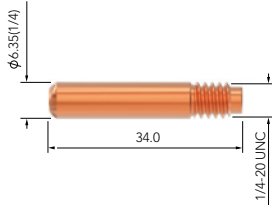
U401-6-50	1/8" Recess Tip 1/2" Bore Nozzle	12.7	2.4mm	Copper	●	●	●	●
U401-6-62	1/8" Recess Tip 5/8" Bore Nozzle	16.0	2.4mm	Copper	●	●	●	●
U401-6-75	1/8" Recess Tip 3/4" Bore Nozzle	19.0	2.4mm	Copper	●	●	●	●

● Standard wear part range ● Torch package standard wear part set-up

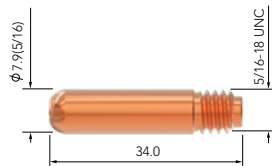
Wear Parts

TRG Contact Tips

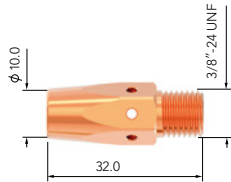
Part No.	Description	Material	Wire Size MM-INCH	TR200A	TR300A	TR400A	TR500A
U403-10	Contact Tip	Ecu	1.0-0.040	●	●	●	●
U403-23	Contact Tip	Ecu	0.6-0.023	●	●	●	●
U403-30	Contact Tip	Ecu	0.8-0.030	●	●	●	●
U403-35	Contact Tip	Ecu	0.9-0.035	●	●	●	●
U403-45	Contact Tip	Ecu	1.2-0.045	●	●	●	●
U403-52	Contact Tip	Ecu	1.3-0.052	●	●	●	●
U403-116	Contact Tip	Ecu	1.6-1/16"	●	●	●	●



U403-1-10	Contact Tip	Ecu	1.0-0.040	●	●	●	●
U403-1-30	Contact Tip	Ecu	0.8-0.030	●	●	●	●
U403-1-35	Contact Tip	Ecu	0.9-0.035	●	●	●	●
U403-1-45	Contact Tip	Ecu	1.2-0.045	●	●	●	●
U403-1-52	Contact Tip	Ecu	1.3-0.052	●	●	●	●
U403-1-55	Contact Tip	Ecu	1.4-0.055	●	●	●	●
U403-1-1.8	Contact Tip	Ecu	1.8-0.071	●	●	●	●
U403-1-116	Contact Tip	Ecu	1.6-1/16"	●	●	●	●
U403-1-332	Contact Tip	Ecu	2.4-3/32"	●	●	●	●
U403-1-364	Contact Tip	Ecu	1.2-3/64"	●	●	●	●
U403-1-564	Contact Tip	Ecu	2.0-5/64"	●	●	●	●

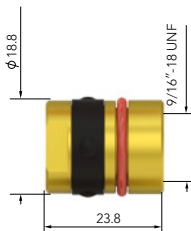


Wear Parts



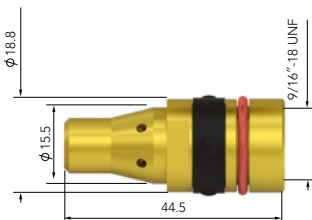
TRG Diffusers

Part No.	Description	Material	TR200A	TR300A	TR400A	TR500A
U404	Gas Diffuser For Std Tip	Copper	●	●	●	●
U404-1	Gas Diffuser For H.D Tip	Copper	●	●	●	●



TRG Head

Part No.	Description	Material	TR200A	TR300A	TR400A	TR500A
U402-3	Retaining Head Assembly	Brass	●	●	●	●







U404-3	Retaining Head Assembly	Brass	●	●	●	●
--------	-------------------------	-------	---	---	---	---

● Standard wear part range ● Torch package standard wear part set-up

Wear Parts

TRG Liners

Part No.	Length	Description	Nipple	Wire Size mm-inch	TR200A	TR300A	TR400A	TR500A
								
U415-23-10B	3.8mt	Steel Liner x 10ft	Brass Nipple	0.6 / 0.023	●	●	●	●
U415-23-15B	4.9mt	Steel Liner x 15ft	Brass Nipple	0.6 / 0.023	●	●	●	●
U415-23-25B	8.1mt	Steel Liner x 25ft	Brass Nipple	0.6 / 0.023	●	●	●	●
								
U415-30-10B	3.8mt	Steel Liner x 10ft	Brass Nipple	0.8 / 0.030	●	●	●	●
U415-30-15B	4.9mt	Steel Liner x 15ft	Brass Nipple	0.8 / 0.030	●	●	●	●
U415-30-25B	8.1mt	Steel Liner x 25ft	Brass Nipple	0.8 / 0.030	●	●	●	●
								
U415-35-10B	3.8mt	Steel Liner x 10ft	Brass Nipple	0.9-1.0 / 0.035-0.040	●	●	●	●
U415-35-15B	4.9mt	Steel Liner x 15ft	Brass Nipple	0.9-1.0 / 0.035-0.040	●	●	●	●
U415-35-25B	8.1mt	Steel Liner x 25ft	Brass Nipple	0.9-1.0 / 0.035-0.040	●	●	●	●
								
U415-116-1B	0.3mt	Steel Liner x 1ft	Brass Nipple	1.2-1.6 / 0.045-1/16"	●	●	●	●
U415-116-10B	3.8mt	Steel Liner x 10ft	Brass Nipple	1.2-1.6 / 0.045-1/16"	●	●	●	●
U415-116-15B	4.9mt	Steel Liner x 15ft	Brass Nipple	1.2-1.6 / 0.045-1/16"	●	●	●	●
U415-116-25B	8.1mt	Steel Liner x 25ft	Brass Nipple	1.2-1.6 / 0.045-1/16"	●	●	●	●

● Standard wear part range ● Torch package standard wear part set-up

Welding & Cutting Torch Technology

JINAN UNIARC WELDING TECHNOLOGY CO., LTD

13A Zhangjin Comprehensive Bonded Zone
33688, Jing Shi Dong Road
Jinan Area of China (Shandong) Pilot Free Trade Zone
Jinan 250102, P.R. China

Tel: +86 531 88239823

Website: www.uniarctorchology.com

Email: info@uniarctorchology.com

MPU009 / V.2022.08