



Welding & Cutting Torch Technology

Product Catalogue

SUM Mig Series



About Us

Uniarc is part of a group of companies specializing in the production of Welding and Cutting torches.

With over 40 years experience, the group is positioned as a global leader at the heart of the welding torch industry.

Originally established in the United Kingdom in the 1980's, the company is now a fully-fledged, vertically integrated Chinese product innovator and manufacturer.

Our customers span a full cross section of the industry, ranging from general distribution to leading global original equipment manufacturers.

Our products are used in a broad cross-section of industrial sectors ranging from auto body repair to ship building.

Whether you need a standard off the shelf product or a customized branded option with your own colours, logos and packaging we have a one stop solution for your requirements.

Our team are here to help, contact us today if you need anymore information.



find out more www.uniarctorchology.com

Contents

Features Focus	4
Range Overview	5
<hr/>	
Torch Model	
SUM 315A	6
SUM 515A	7
<hr/>	
Wear Parts	
Nozzles	8
Contact Tips	8
Diffusers	8
Liners	9
<hr/>	

SUM Mig / Mag Air-Cooled Series

Features Focus

Consumable Parts

All wear and spare parts are manufactured to the same specification as the OEM and are fully interchangeable.

Knuckle Joint and Cable Support

Small movements of the handle and neck are possible independent of the cable assembly. A moulded polymer cable support increases flexibility and electrode support.



Euro Terminations

Fitted with unbreakable spring loaded gun plug body pins.

Swan Necks

Polymer armoured neck for increased durability and insulation integrity.

Ergo Handle

Ergonomic design solutions combine balance and positioning.



Air-Cooled Cable Systems

Cable assemblies offer outstanding flexibility with the highest heat and abrasion resistance of any known cable.

Cable end and crimp systems ensure maximum conductivity whilst the outer jacket is constructed from cross-linked polymers providing a tear proof outer with a burn threshold of 375°C.



Rear Cable Support

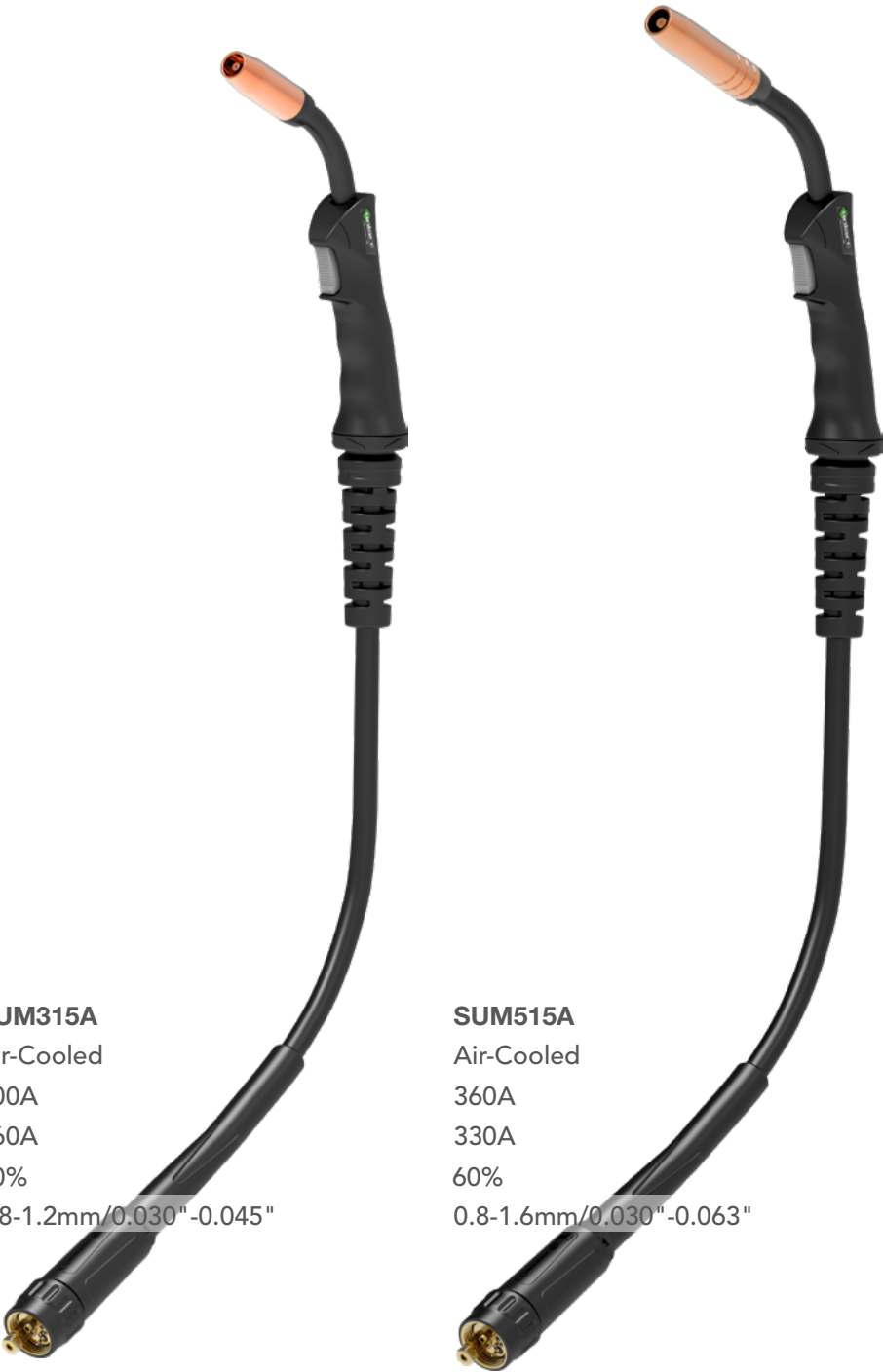
Extra length cable support systems ensure smooth and consistent wire feed at any angle.

Housings, Nuts and Supports

Tough and damage resistant, housings and nuts are formed in robust glass-reinforced polymers encasing all conductive parts in accordance with EN60974-7.

SUM Mig / Mag Air-Cooled Series

Ratings: 260 Amp to 330 Amp, Mixed Gas M21



Technical Data

Cooling Method

Rating: CO₂

Rating: Mixed Gas M21

Duty Cycle:

Wire Size:

SUM315A

Air-Cooled

300A

260A

60%

0.8-1.2mm/0.030"-0.045"

SUM515A

Air-Cooled

360A

330A

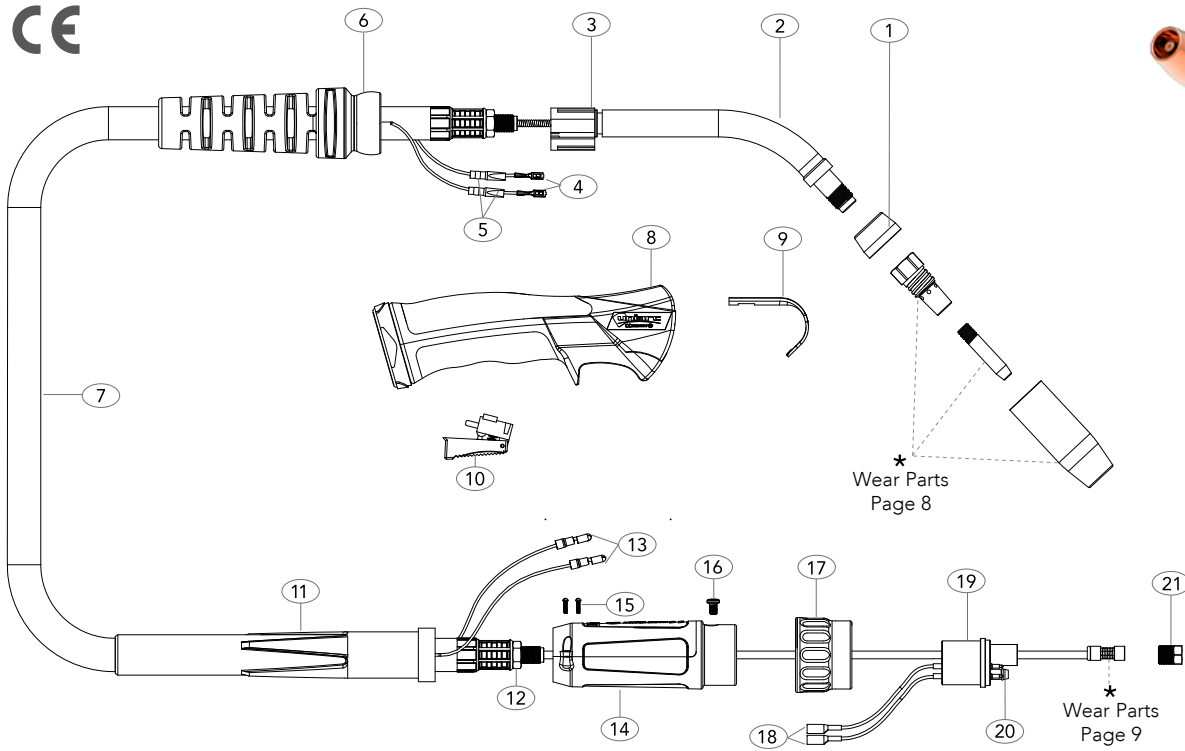
60%

0.8-1.6mm/0.030"-0.063"

Order Codes	3mt	SUM315-30ER	SUM515-30ER
	4mt	SUM315-40ER	SUM515-40ER
	4.5mt	SUM315-45ER	SUM515-45ER
	5mt	SUM315-50ER	SUM515-50ER

SUM315A Air-Cooled Mig Welding Torch

Rating: 300A CO₂ 260A mixed gas M21, EN60974-7 @ 60% duty cycle. 0.8 to 1.2mm / 0.030"-0.045" wires

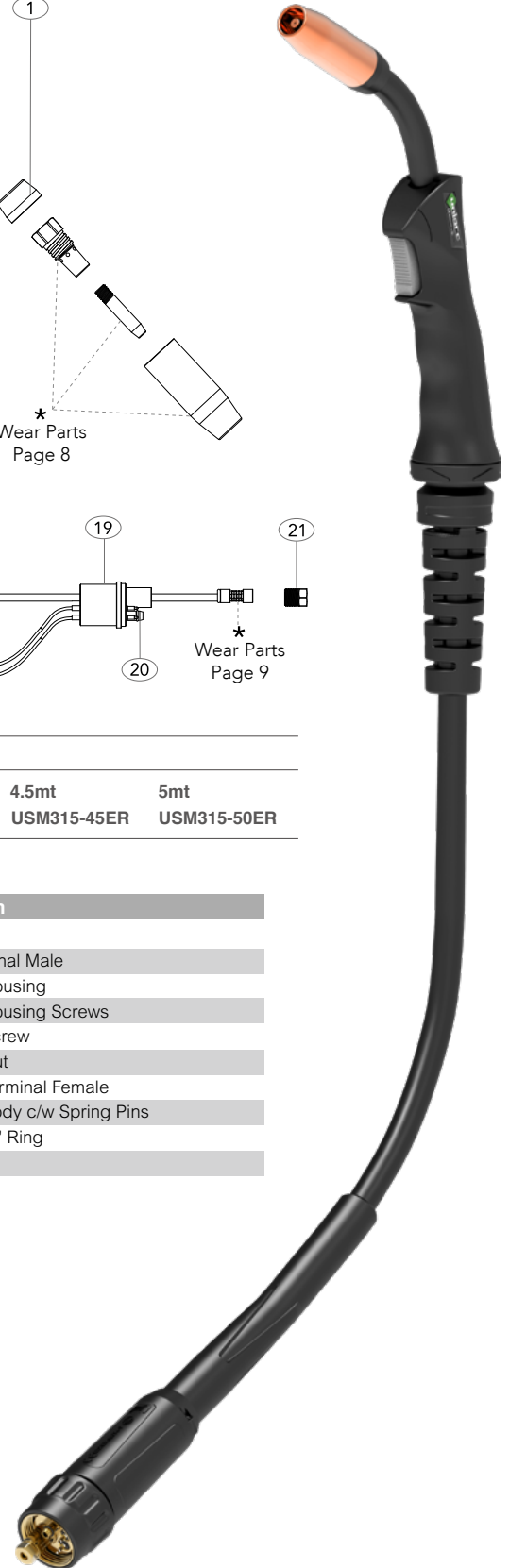


MODEL

Description	Part Number			
Ergo Torch Package	3mt	4mt	4.5mt	5mt
	USM315-30ER	USM315-40ER	USM315-45ER	USM315-50ER

SPARE PART

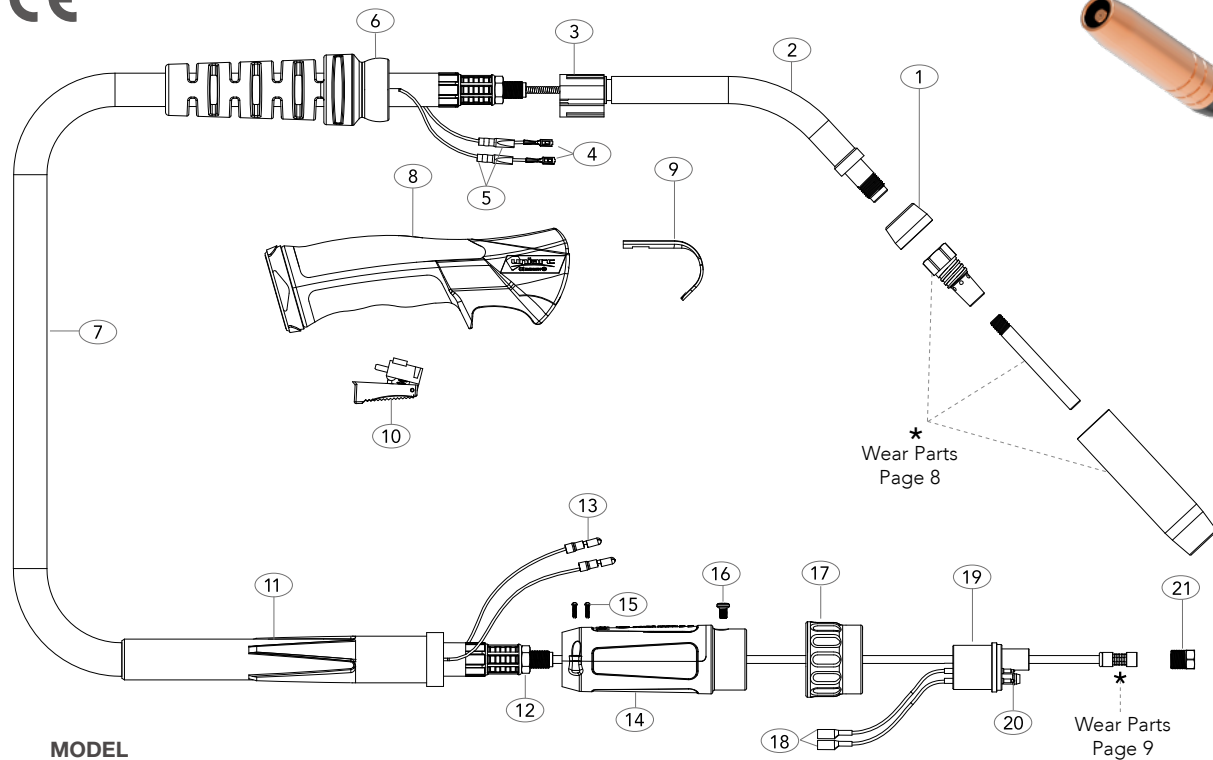
Part Number	Description	Part Number	Description
1 USM3152	Adaptor Piece	12 UB1505	Lock Nut
2 USM3153	Swan Neck	13 UB1522	Cable Terminal Male
3 UG1515	Ergo Handle Location Body	14 SC2578/L	Gun Plug Housing
4 UB1521	Cable Terminal	15 SCSP1-1	Gun Plug Housing Screws
5 UB1521-C	Cable Terminal Cover	16 UB1526	Gun Plug Screw
6 UG8016-BK	Handle Cable Support	17 UC1519/S	Gun Plug Nut
7 USA35-30	Cable Assembly x 3mt	18 UB1523	Gun Plug Terminal Female
USA35-40	Cable Assembly x 4mt	19 USM1528	Gun Plug Body c/w Spring Pins
USA35-45	Cable Assembly x 4.5mt	20 UB1524	Gun Plug 'O' Ring
USA35-50	Cable Assembly x 5mt	21 USM1525	Liner Nut
8 UG2514-BK	Ergo Handle Kit c/w Lock Nut		
9 UB2517	Hanger Hook (Optional)		
10 UG2516	Standard Trigger Assembly		
11 UPA3541	Cable Support		



All products conform to EN60974-7, **CE** and are RoHS2, REACH and WEEE compliant

SUM515A Air-Cooled Mig Welding Torch

Rating: 360A CO₂ 330A mixed gas M21, EN60974-7 @ 60% duty cycle. 0.8 to 1.6mm / 0.030"-0.063" wires



MODEL

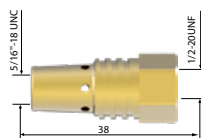
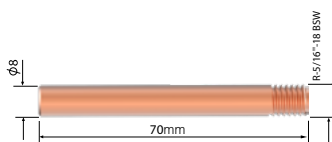
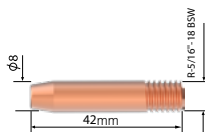
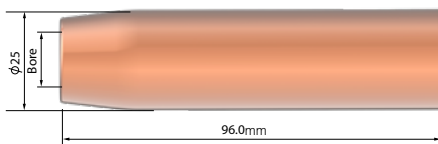
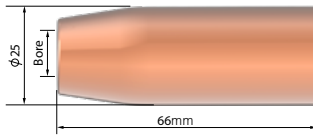
Description	Part Number			
	3mt	4mt	4.5mt	5mt
Ergo Torch Package	USM515-30ER	USM515-40ER	USM515-45ER	USM515-50ER

SPARE PARTS

Part Number	Description	Part Number	Description
1 USM3152	Adaptor Piece	12 UB1505	Lock Nut
2 USM5153	Swan Neck	13 UB1522	Cable Terminal Male
3 UG1515	Ergo Handle Location Body	14 SC2578/L	Gun Plug Housing
4 UB1521	Cable Terminal	15 SCSP1-1	Gun Plug Housing Screws
5 UB1521-C	Cable Terminal Cover	16 UB1526	Gun Plug Screw
6 UG8016-BK	Handle Cable Support	17 UC1519/S	Gun Plug Nut
7 USA50-30	Cable Assembly x 3mt	18 UB1523	Gun Plug Terminal Female
USA50-40	Cable Assembly x 4mt	19 USM1528	Gun Plug Body c/w Spring Pins
USA50-45	Cable Assembly x 4.5mt	20 UB1524	Gun Plug 'O' Ring
USA50-50	Cable Assembly x 5mt	21 USM1525	Liner Nut
8 UG2514-BK	Ergo Handle Kit c/w Lock Nut		
9 UB2517	Hanger Hook (Optional)		
10 UG2516	Standard Trigger Assembly		
11 UPA3541	Cable Support		

All products conform to EN60974-7, **CE** and are RoHS2, REACH and WEEE compliant

Wear Parts



SUM Nozzles

Part No.	Description	Bore	Wall	Material	SUM315A	SUM515A
USM-1053	Nozzle	11.0	2.0mm	Copper	●	●
USM-1054	Nozzle	13.0	2.0mm	Copper	●	●
USM-1055	Nozzle	15.0	2.0mm	Copper	●	●
USM-1239	Nozzle	17.0	2.0mm	Copper	●	●
USM-1049	Nozzle	16.0	2.0mm	Copper	●	●
USM-1050	Nozzle	19.0	2.0mm	Copper	●	●

SUM Contact Tip

Part No.	Description	Material	Wire Size	mm-INCH	SUM315A	SUM515A
USM-050	Contact Tip	Ecu	0.8	0.030"	●	●
USM-051	Contact Tip	Ecu	0.9	0.035"	●	●
USM-052	Contact Tip	Ecu	1.0	0.040"	●	●
USM-053	Contact Tip	Ecu	1.2	0.045"	●	●
USM-040	Contact Tip	Ecu	0.8	0.030"	●	●
USM-041	Contact Tip	Ecu	0.9	0.035"	●	●
USM-042	Contact Tip	Ecu	1.0	0.040"	●	●
USM-043	Contact Tip	Ecu	1.2	0.045"	●	●
USM-044	Contact Tip	Ecu	1.6	0.063"	●	●

SUM Tip Adaptors

Part No.	Description	Material	SUM315A	SUM515A
USM-1101	Tip Adaptor	Brass	●	●

● Standard wear part range ● Torch package standard wear part set-up

Wear Parts

SUM Tip Liner

Part No.	Description	Length	Nipple	Wire Size mm-INCH	SUM315A	SUM515A
----------	-------------	--------	--------	----------------------	---------	---------



USM1535-30B	Steel Liner x 3mt	3.4mt	Brass Nipple	0.8-1.0	0.030" - 0.040"	● ●
USM1535-40B	Steel Liner x 4mt	4.4mt	Brass Nipple	0.8-1.0	0.030" - 0.040"	● ●
USM1535-45B	Steel Liner x 4.5mt	4.9mt	Brass Nipple	0.8-1.0	0.030" - 0.040"	● ●
USM1535-50B	Steel Liner x 5mt	5.4mt	Brass Nipple	0.8-1.0	0.030" - 0.040"	● ●



USM2524-30B	Steel Liner x 3mt	3.4mt	Brass Nipple	1.2	0.045"	● ●
USM2524-40B	Steel Liner x 4mt	4.4mt	Brass Nipple	1.2	0.045"	● ●
USM2524-45B	Steel Liner x 4.5mt	4.9mt	Brass Nipple	1.2	0.045"	● ●
USM2524-50B	Steel Liner x 5mt	5.4mt	Brass Nipple	1.2	0.045"	● ●



USM3631-30B	Steel Liner x 3mt	3.4mt	Brass Nipple	1.2-1.6	0.045" - 0.063"	● ●
USM3631-40B	Steel Liner x 4mt	4.4mt	Brass Nipple	1.2-1.6	0.045" - 0.063"	● ●
USM3631-45B	Steel Liner x 4.5mt	4.9mt	Brass Nipple	1.2-1.6	0.045" - 0.063"	● ●
USM3631-50B	Steel Liner x 5mt	5.4mt	Brass Nipple	1.2-1.6	0.045" - 0.063"	● ●

● Standard wear part range ● Torch package standard wear part set-up

Welding & Cutting Torch Technology

JINAN UNIARC WELDING TECHNOLOGY CO., LTD

13A Zhangjin Comprehensive Bonded Zone
33688, Jing Shi Dong Road
Jinan Area of China (Shandong) Pilot Free Trade Zone
Jinan 250102, P.R. China

Tel: +86 531 88239823

Website: www.uniarctorchology.com

Email: info@uniarctorchology.com

MPU007 / V.2023.02