



**Welding & Cutting Torch Technology**

**Product Catalogue**

**MLR Universal System**



## About Us

Uniarc is part of a group of companies specializing in the production of Welding and Cutting torches.

With over 40 years experience, the group is positioned as a global leader at the heart of the welding torch industry.

Originally established in the United Kingdom in the 1980's, the company is now a fully-fledged, vertically integrated Chinese product innovator and manufacturer.

Our customers span a full cross section of the industry, ranging from general distribution to leading global original equipment manufacturers.

Our products are used in a broad cross-section of industrial sectors ranging from auto body repair to ship building.

Whether you need a standard off the shelf product or a customized branded option with your own colours, logos and packaging we have a one stop solution for your requirements.

Our team are here to help, contact us today if you need anymore information.



find out more [www.uniarctorchology.com](http://www.uniarctorchology.com)

## Contents

---

Features Focus	4
Range Overview	5

---

### Torch Model

ML150A	6
ML250A	7

---

Direct Plug Connector Kits	8
----------------------------	---

---

### Wear Parts

MLR Nozzles	9
MLR Contact Tips	9
MLR Tip Adaptor	10
MLR Head Assemblies	10
MLR Liners	11

---



**Consumable Parts**

All wear and spare parts are manufactured to the same specification as the OEM and are fully interchangeable.

**Hanger Hook**

A "plug and play" option, they encourage the operator to hang the torch off the ground where it is easy to locate.

**Knuckle Joint and Cable Support**

Small movements of the handle and neck are possible independent of the cable assembly. A moulded polymer cable support increases flexibility and electrode support.



**Terminations**

A comprehensive range of USA and European style terminations ensures worldwide compatibility.

**Swan Necks**

Manufactured to the same specification as the OEM.

**Handles and Cable Supports**

Designed to combine balance, positioning and ergonomics with practical torch performance, cable life and consistent wire feed.

**Air-Cooled Cable Systems**

Cable assemblies offer outstanding flexibility with the highest heat and abrasion resistance of any known cable.

Cable end and crimp systems ensure maximum conductivity whilst the outer jacket is constructed from cross-linked polymers providing a tear proof outer with a burn threshold of 375°C.



**Rear Cable Support**

Extra length cable support systems ensure smooth and consistent wire feed at any angle.

**Housings, Nuts and Supports**

Tough and damage resistant, housings and nuts are formed in robust glass-reinforced polymers encasing all conductive parts in accordance with EN60974-7.



# MLR Mig / Mag Air-Cooled Series

Ratings: 150 Amp to 200 Amp, Mixed Gas



## Technical Data

Cooling Method

Rating: CO<sub>2</sub>

Rating: Mixed Gas M21

Duty Cycle:

Wire Size:

### ML150A

Air-Cooled

180A

150A

60%

0.6-0.9mm

### ML250A

Air-Cooled

230A

200A

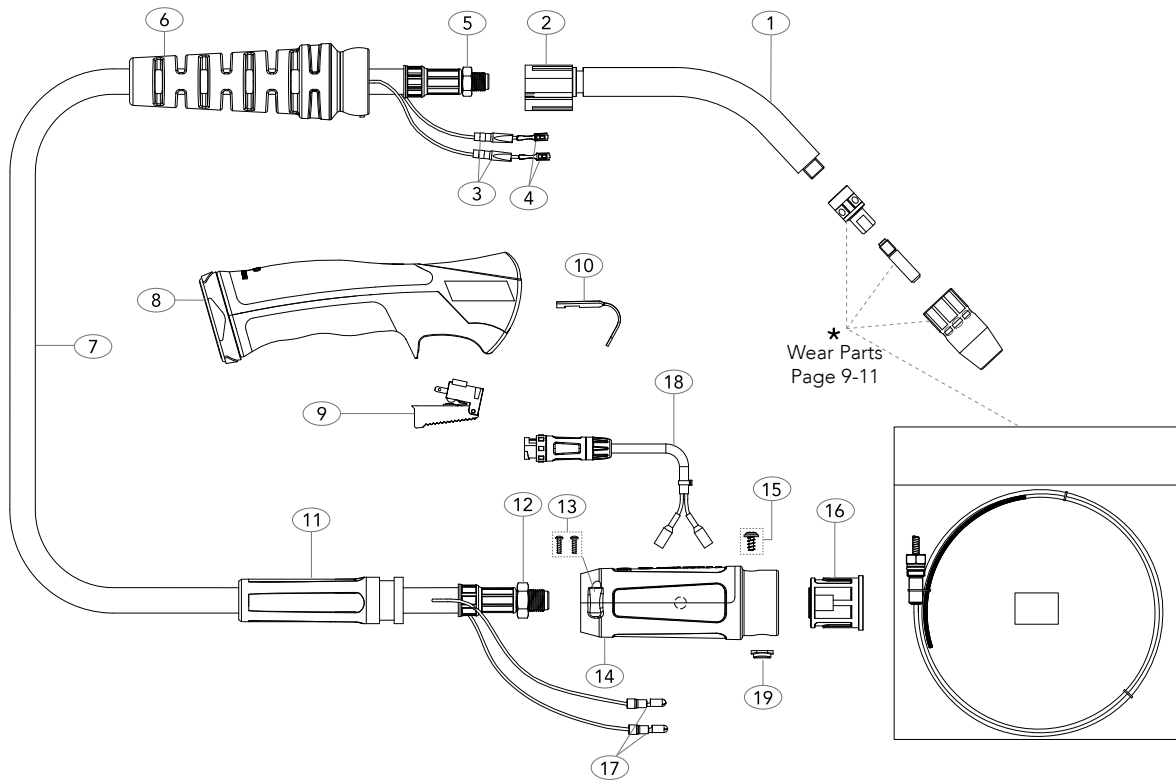
60%

0.6-1.2mm

Order Codes	10ft / 3mt	UGML150A-10AD	UGML250A-10AD
	12ft / 4mt	UGML150A-12AD	UGML250A-12AD
	15ft / 5mt	UGML150A-15AD	UGML250A-15AD

# ML150A Air-Cooled MLR Mig Welding Torch

Rating: 180A CO<sub>2</sub> 150A mixed gas M21, EN60974-7 @ 60% duty cycle. 0.6 to 0.9mm / 0.023-0.045" wires



## MODEL

Description	Part Number		
MLR150A Torch Package - Uni System	10ft / 3mt UGML150A-10AD	12ft / 4mt UGML150A-12AD	15ft / 5mt UGML150A-15AD

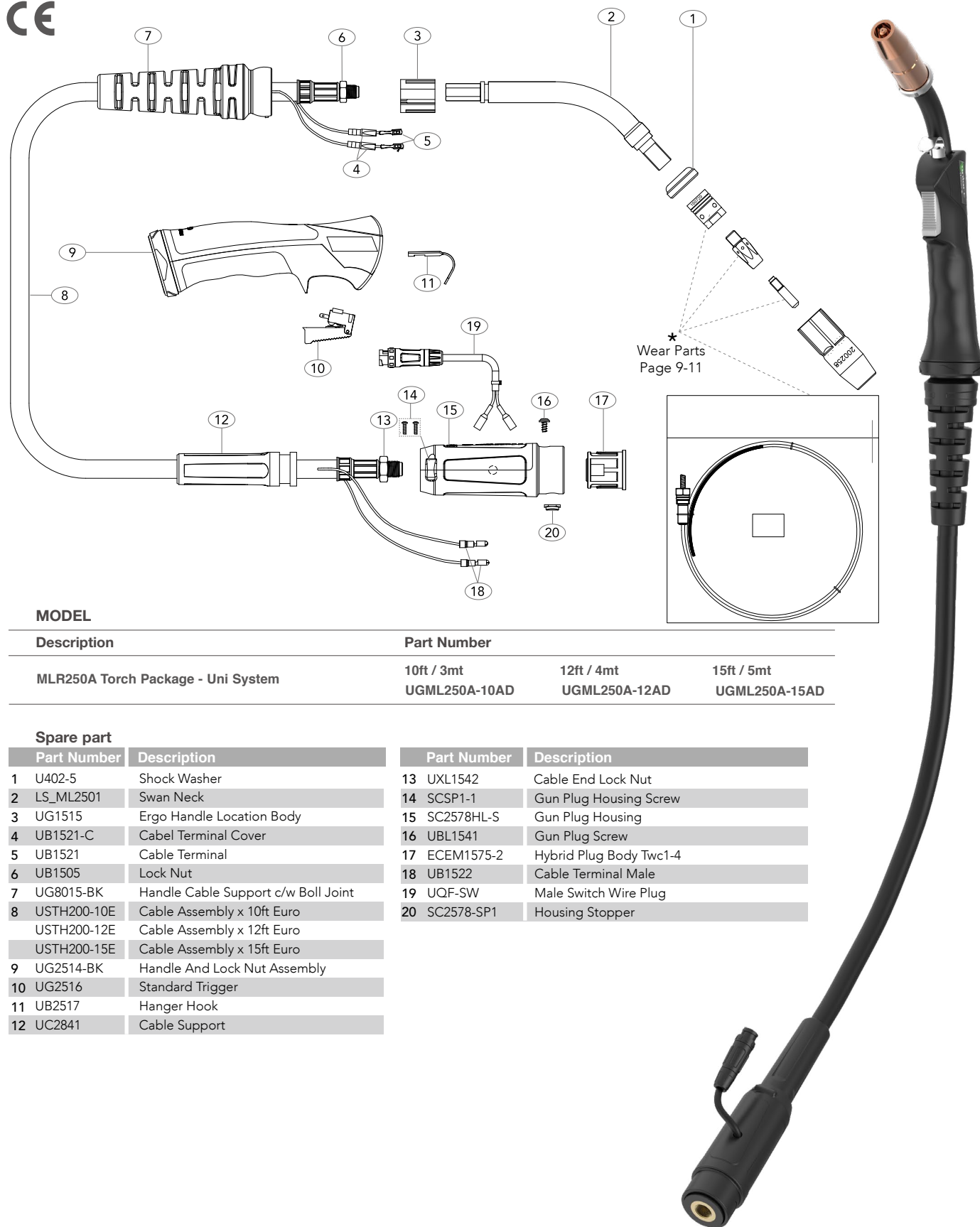
## Spare part

Part Number	Description	Part Number	Description
1	LS_ML1501 Swan Neck	12	UXL1542 Cable End Lock Nut
2	UG1515 Ergo Handle Location Body	13	SCSP1-1 Gun Plug Housing Screw
3	UB1521-C Cabel Terminal Cover	14	SC2578HL-S Gun Plug Housing
4	UB1521 Cable Terminal	15	UBL1541 Gun Plug Screw
5	UB1505 Lock Nut	16	ECEM1575-2 Hybrid Plug Body Twc1-4
6	UG8015-BK Handle Cable Support c/w Boll Joint	17	UB1522 Cable Terminal Male
7	USTH180-10E Cable Assembly x 10ft Euro	18	UQF-SW Male Switch Wire Plug
	USTH180-12E Cable Assembly x 12ft Euro	19	SC2578-SP1 Housing Stopper
	USTH180-15E Cable Assembly x 15ft Euro		
8	UG2514-BK Handle And Lock Nut Assembly		
9	UG2516 Standard Trigger		
10	UB2517 Hanger Hook		
11	UC2841 Cable Support		

All products conform to EN60974-7, **CE** and are RoHS2, REACH and WEEE compliant

# ML250A Air-Cooled Miller Mig Welding Torch

Rating: 230A CO<sub>2</sub> 200A mixed gas M21, EN60974-7 @ 60% duty cycle. 0.6 to 1.2mm / 0.030-1/16" wires



## MODEL

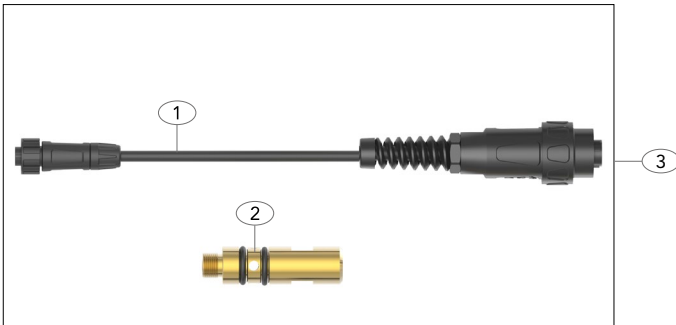
Description	Part Number		
MLR250A Torch Package - Uni System	10ft / 3mt	12ft / 4mt	15ft / 5mt
	UGML250A-10AD	UGML250A-12AD	UGML250A-15AD

## Spare part

Part Number	Description	Part Number	Description
1	U402-5 Shock Washer	13	UXL1542 Cable End Lock Nut
2	LS_ML2501 Swan Neck	14	SCSP1-1 Gun Plug Housing Screw
3	UG1515 Ergo Handle Location Body	15	SC2578HL-S Gun Plug Housing
4	UB1521-C Cabel Terminal Cover	16	UBL1541 Gun Plug Screw
5	UB1521 Cable Terminal	17	ECEM1575-2 Hybrid Plug Body Twc1-4
6	UB1505 Lock Nut	18	UB1522 Cable Terminal Male
7	UG8015-BK Handle Cable Support c/w Boll Joint	19	UQF-SW Male Switch Wire Plug
8	USTH200-10E Cable Assembly x 10ft Euro	20	SC2578-SP1 Housing Stopper
	USTH200-12E Cable Assembly x 12ft Euro		
	USTH200-15E Cable Assembly x 15ft Euro		
9	UG2514-BK Handle And Lock Nut Assembly		
10	UG2516 Standard Trigger		
11	UB2517 Hanger Hook		
12	UC2841 Cable Support		

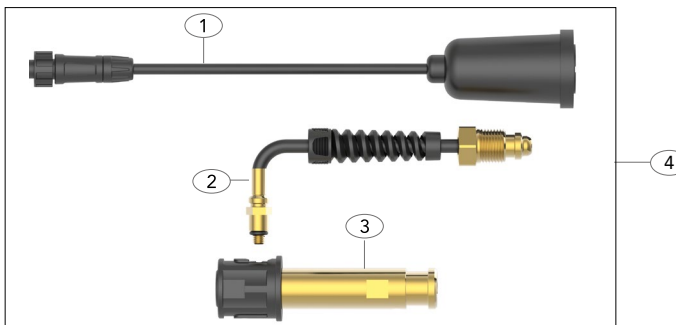
All products conform to EN60974-7, CE and are RoHS2, REACH and WEEE compliant

**MLR Universal Kit**



Direct Plug Connector		
Part Number	Description	
1	ECEM1575-SW-Q	Quick Fit Miller® Plug Assembly
2	ECEM1575M-1	Miller® Power Pin
3	ECEM1575MK-Q	Quick Fit Connector Kit Complete

**Lincoln Universal Kit**



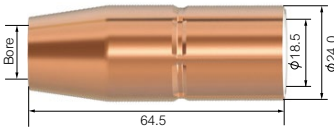
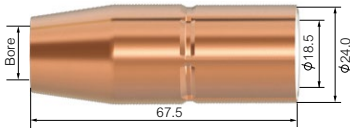
Direct Plug Connector		
Part Number	Description	
1	M16725-Q	Quick Fit Lincoln Plug Assembly
2	ECEL1575-G	Lincoln® Gas Tube Assembly
3	ECEL1575-M	Lincoln® Power Pin
4	ECEL1575MK-Q	Quick Fit Connector Kit Complete



**Universal Set-up Guide**  
A simple step by step guide



## Wear Parts

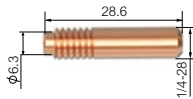


### MLR Nozzles

Part No.	Description	Bore	Wall	Material	ML 150A	ML 200A
UM169-715	Conical Nozzle	13.0	1.5mm	Copper	●	●
UM169-724	Conical Nozzle	13.0	2.75mm	Copper	●	●
UM169-725	Conical Nozzle	16.0	2.75mm	Copper	●	●
UM169-726	Conical Nozzle	16.0	2.75mm	Copper	●	●
UM200-258	Conical Nozzle	13.0	2.75mm	Copper	●	●

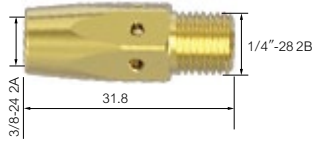
### MLR Contact Tips

Part No.	Description	Material	Wire Size mm-inch	ML 150A	ML 200A
UM000-066	Contact Tip	Copper	0.6-0.023	●	●
UM000-067	Contact Tip	Copper	0.8-0.030	●	●
UM000-068	Contact Tip	Copper	0.9-0.035	●	●
UM000-069	Contact Tip	Copper	1.2-0.045	●	●



● Standard wear part range    ● Torch package standard wear part set-up

## Wear Parts

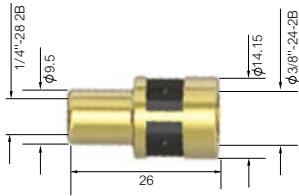


### Tip Adaptor

Part No. Description Material

ML 150A  
ML 200A

UM169-728	Tip Adaptor	Brass	● ●
-----------	-------------	-------	-----

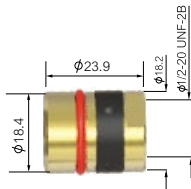


### MLR Head Assemblies

Part No. Description Material

ML 150A  
ML 200A

UM169-716	Head Assembly	Brass	● ●
-----------	---------------	-------	-----



UM169-729	Head Assembly	Brass	● ●
-----------	---------------	-------	-----

# Wear Parts

## MLR Liners

Part No.    Length    Description    Nipple    Wire Size mm-INCH

ML 150A  
ML 200A



Part No.	Length	Description	Nipple	Wire Size mm-INCH	ML 150A	ML 200A
UM194-011-10FT	3.4M	Steel Liner x 10ft	Brass Nipple	0.8-0.9/0.030-0.035"	●	●
UM194-011-12FT	4.1M	Steel Liner x 12ft	Brass Nipple	0.8-0.9/0.030-0.035"	●	●
UM194-011	5.1M	Steel Liner x 15ft	Brass Nipple	0.8-0.9/0.030-0.035"	●	●
UM194-012-10FT	3.4M	Steel Liner x 10ft	Brass Nipple	0.9-1.2/0.035-0.045"	●	●
UM194-012-12FT	4.1M	Steel Liner x 12ft	Brass Nipple	0.9-1.2/0.035-0.045"	●	●
UM194-012	5.1M	Steel Liner x 15ft	Brass Nipple	0.9-1.2/0.035-0.045"	●	●

● Standard wear part range    ● Torch package standard wear part set-up

## Welding & Cutting Torch Technology

**JINAN UNIARC WELDING TECHNOLOGY CO., LTD**

13A Zhangjin Comprehensive Bonded Zone  
33688, Jing Shi Dong Road  
Jinan Area of China (Shandong) Pilot Free Trade Zone  
Jinan 250102, P.R. China

**Tel:** +86 531 88239823

**Website:** [www.uniarctorchology.com](http://www.uniarctorchology.com)

**Email:** [info@uniarctorchology.com](mailto:info@uniarctorchology.com)

MPU032 / V.2024.01