

Welding & Cutting Torch Technology

Product Catalogue

Proline Spool-On

Universal System



About Us

Uniarc is part of a group of companies specializing in the production of Welding and Cutting torches.

With over 40 years experience, the group is positioned as a global leader at the heart of the welding torch industry.

Originally established in the United Kingdom in the 1980's, the company is now a fully-fledged, vertically integrated Chinese product innovator and manufacturer.

Our customers span a full cross section of the industry, ranging from general distribution to leading global original equipment manufacturers.

Our products are used in a broad cross-section of industrial sectors ranging from auto body repair to ship building.

Whether you need a standard off the shelf product or a customized branded option with your own colours, logos and packaging we have a one stop solution for your requirements.

Our team are here to help, contact us today if you need anymore information.



find out more www.uniarctorchology.com

Contents

Features Focus	4
Range Overview	5

Torch Model

PLSP 150A	7
PLSP 240A	8
PLSP 250A	9
PLSP 360A	10

Direct Plug Connector Kits	11
-----------------------------------	-----------

Wear Parts

Nozzles	12
Contact Tips	12
Adaptors	14
Diffusers	14

Proline Spool-on

Entry level Spool-on guns offer a cost effective solution for low deposition Mig welding and precise control of hard and soft wires.

Consumable Parts

All front-end wear parts are BZL compatible.



Handle Grip

Motor encased in a durable single shot handle.

Wire Speed

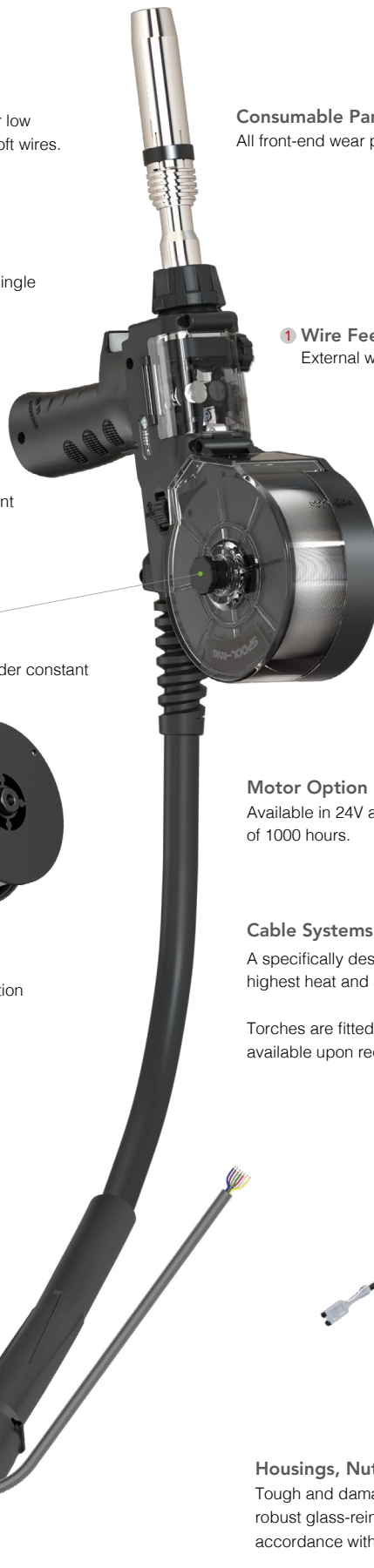
On torch wire speed adjustment

Wire Brake

A unique wire brake keeps the spool under constant tension to prevent overrun of the wire.

Wire Retainer

Keeps the wire from de-reeling in operation



1 Wire Feed Adjustment

External wire tension adjustment.



2 Visibility

Quick and easy reference of all moving parts.

3 Flip Top

Rapid access available via a flip to access panel.

Motor Option

Available in 24V and 42V options with a minimum service life expectancy of 1000 hours.

Cable Systems

A specifically designed cable offers outstanding flexibility with the highest heat and abrasion resistance of any known cable.

Torches are fitted with 8m cable as standard with different lengths available upon request.



Rear Cable Support

Extra length cable support system ensures smooth and consistent wire feed at any angle.

Termination Options

A comprehensive range of USA style terminations ensures worldwide compatibility.

Housings, Nuts and Supports

Tough and damage resistant, housings and nuts are formed in robust glass-reinforced polymers encasing all conductive parts in accordance with EN60974-7.

Proline Spool-On Mig Torch Uni End Range

Ratings: 150 Amp to 220 Amp, Mixed Gas M21

Range Overview



Technical Data

Cooling Method

Rating: CO₂

Rating: Mixed Gas M21

Duty Cycle:

Wire Size: Al

Wire Size: Steel

Motor:

Motor Life:

PLSP150A

Air-Cooled

180A

150A

35%

0.8-1.0

0.8-1.0

24V and 42V

1000 Hours

PLSP240A

Air-Cooled

250A

220A

35%

0.8-1.2

0.8-1.0

24V and 42V

1000 Hours

Order Codes	24V	PLSP150A-24-60AD	PLSP240A-24-60AD
	42V	PLSP150A-42-60AD	PLSP240A-42-60AD
	24V	PLSP150A-24-P1-60AD	PLSP240A-24-P1-60AD
	42V	PLSP150A-42-P1-60AD	PLSP240A-42-P1-60AD

Proline Spool-On Mig Torch Uni End Range

Ratings: 200 Amp to 270 Amp, Mixed Gas M21

Range Overview



Technical Data

Cooling Method

Rating: CO₂

Rating: Mixed Gas M21

Duty Cycle:

Wire Size: Al

Wire Size: Steel

Motor:

Motor Life:

PLSP250A

Air-Cooled

230A

200A

35%

0.8-1.2

0.8-1.0

24V and 42V

1000 Hours

PLSP360A

Air-Cooled

300A

270A

35%

0.8-1.2

0.8-1.0

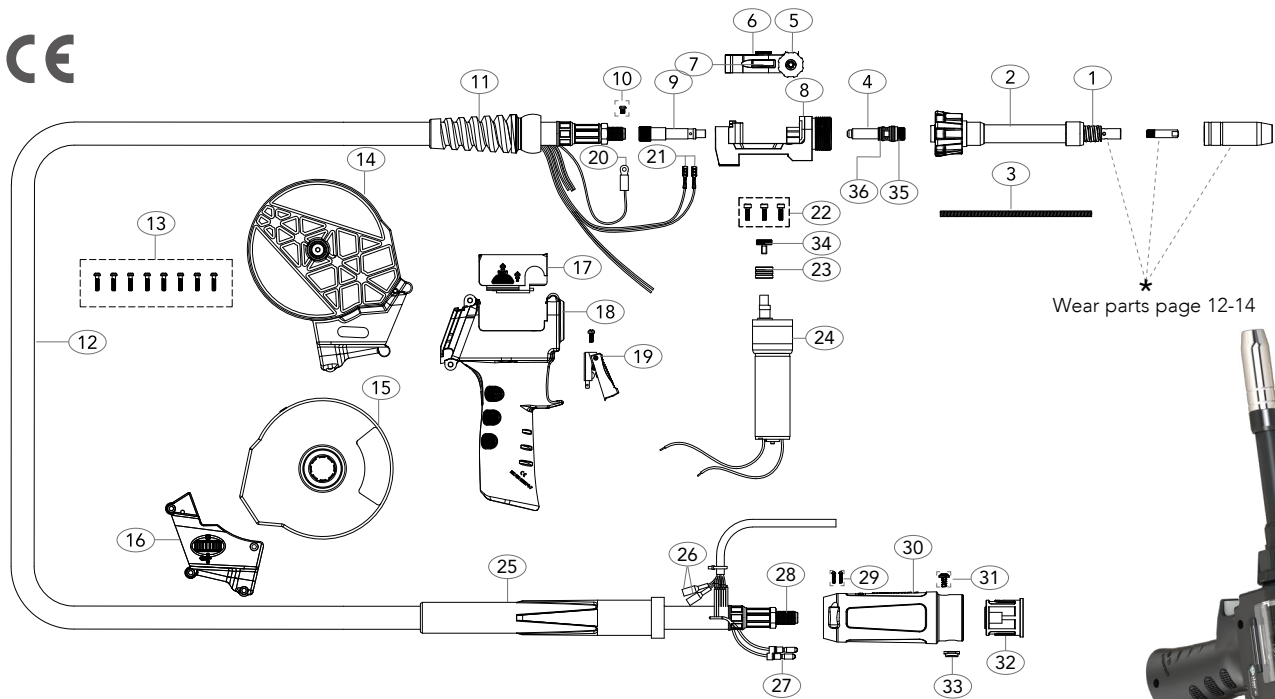
24V and 42V

1000 Hours

Order Codes	24V	PLSP250A-24-60AD	PLSP360A-24-60AD
	42V	PLSP250A-42-60AD	PLSP360A-42-60AD
	24V	PLSP250A-24-P1-60AD	PLSP360A-24-P1-60AD
	42V	PLSP250A-42-P1-60AD	PLSP360A-42-P1-60AD

PLSP150A Air-Cooled Mig Welding Torch

Rating: 180A CO₂ 150A mixed gas M21, EN60974-7 @ 35% duty cycle. 0.8 to 1.0mm wires



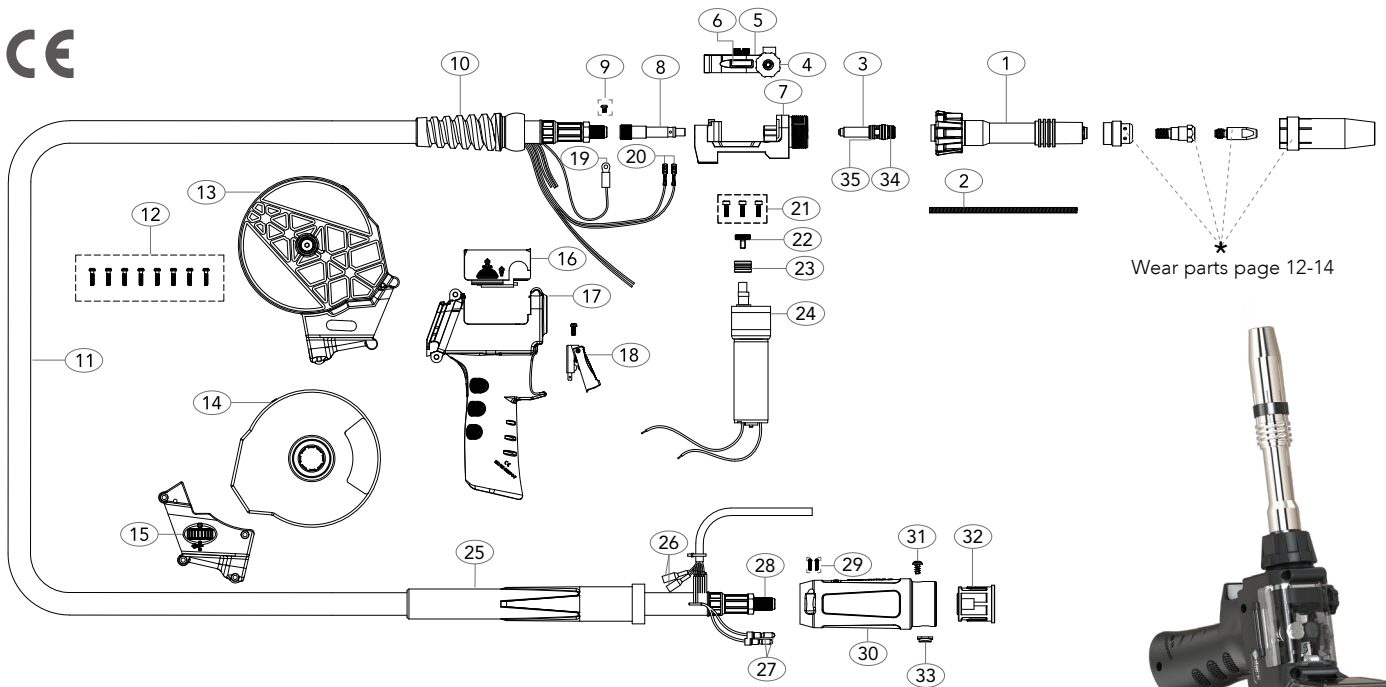
MODEL

Description	Part Number	
	24V	42V
Proline Spool-On 24V Mig Torch Uni End	PLSP150A-24-60AD	PLSP150A-42-60AD
Proline Spool-On 42V Mig Torch Uni End	PLSP150A-24-P1-60AD	PLSP150A-42-P1-60AD

SPARE PARTS

Part Number	Description	Part Number	Description
1	UB1504 Shroud Spring	UGP7020W-10U	Drive Roll For Aluminium Wire \varnothing 1.0
2	USP1501 Straight Neck	24	UGP7020-24 Motor 24V DC
3	USP1502 Jump Liner	UGP7020-42	Motor 42V DC
4	UGP36006 Jump Liner Nipple	25	UPA2041 Cable Support
5	UGP36402B Tension Knob	26	UB1523 Gun Plug Terminal Female
6	UGP36402 Pressure Arm Assembly	27	UB1522 Cable Terminal Male
7	UGP36402R Pressure Roll	28	UB1505 Lock Nut
8	USP36001 Motor Body	29	SCSP1-1 Gun Plug Housing Screw
9	USP36006 Wire Guide	30	SC2578HL/L Gun Plug Housing Assembly
10	SC2563 Screw	31	UBL1541 Gun Plug Screw
11	MIG8015 Cable Support	32	ECEM1528-2 ECE Miller [®] Power End Moulding
12	PLSP1517-60ER Coax Cable Assembly, Euro Type	33	SC2578-SP1 Housing Stopper
13	UKA3X20 Handle Screw Pack	34	UGP7020-24-4 Screw
14	USP2515SP-B Spool Holder	35	9 x 1.5 'O' Ring
15	USP2515SP-C Spool Cover	36	7 x 1.5 'O' Ring
16	USP2515SP-PT-1K Wire Speed Control 1K Ω		
	USP2515SP-PT-5K Wire Speed Control 5K Ω		
	USP2515SP-PT-10K Wire Spool Control 10K Ω		
	USP2515SP-PT-25K Wire Spool Control 25K Ω		
	USP2515SP-PT0 No Potentiometer		
17	UGP2514-C Push-Pull Handle Cover		
18	CSP2515/KJ Spool-On Handle		
19	UGP2516 Push-Pull Trigger		
20	SC2597 Circular Cable Terminal		
21	UB1521 Cable Terminal		
22	UGPMS1 Motor Screw Pack		
23	UGP7020W-08 Drive Roll For Hard Wire \varnothing 0.8		
	UGP7020W-09 Drive Roll For Hard Wire \varnothing 0.9		
	UGP7020W-10 Drive Roll For Hard Wire \varnothing 1.0		
	*UGP7020W-08U Drive Roll For Aluminium Wire \varnothing 0.8		
	UGP7020W-09U Drive Roll For Aluminium Wire \varnothing 0.9		

All products conform to EN60974-7, CE and are RoHS2, REACH and WEEE compliant



MODEL

Description	Part Number	
	24V	42V
Proline Spool-On 24V Mig Torch Uni End	PLSP240A-24-60AD	PLSP240A-42-60AD
Proline Spool-On 42V Mig Torch Uni End	PLSP240A-24-P1-60AD	PLSP240A-42-P1-60AD

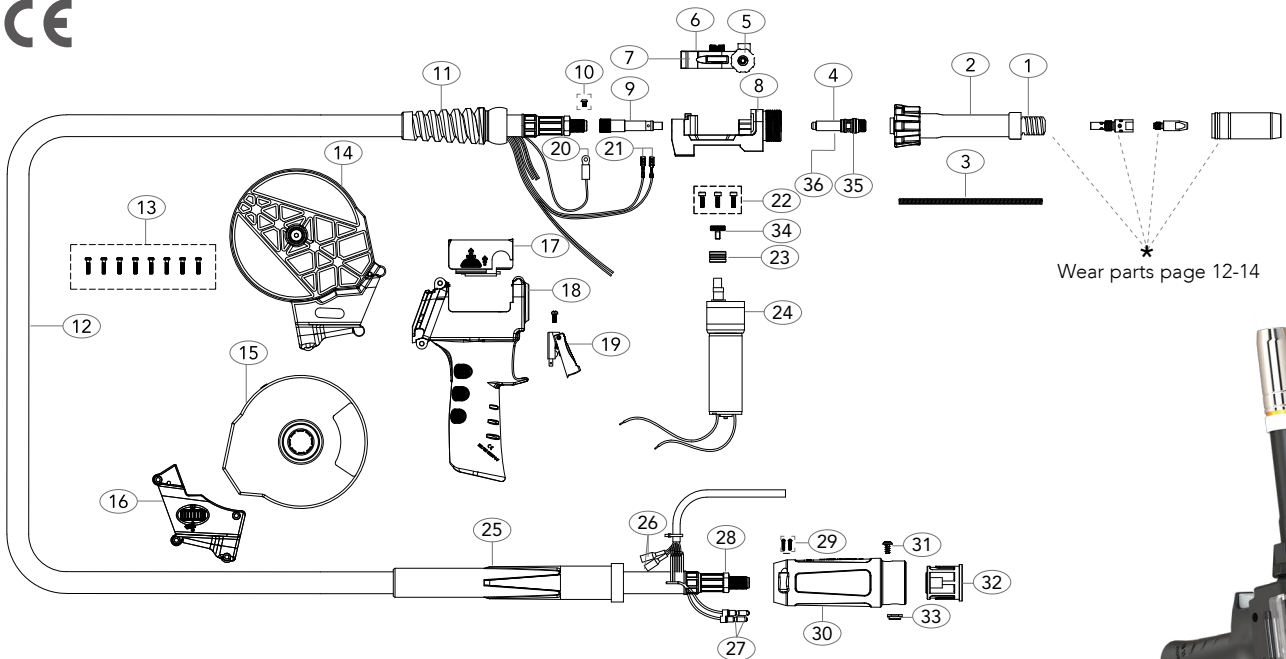
SPARE PARTS

Part Number	Description	Part Number	Description
1 USP2401A	Straight Neck	*UGP7020W-10U	Drive Roll For Aluminium Wire ϕ 1.0
2 UGP3602A	Jump Liner	UGP7020W-12U	Drive Roll For Aluminium Wire ϕ 1.2
3 UGP36006	Jump Liner Nipple	24 UGP7020-24	Motor 24V DC
4 UGP36402B	Tension Knob	UGP7020-42	Motor 42V DC
5 UGP36402	Pressure Arm Assembly	25 UPA2041	Cable Support
6 UGP36402R	Pressure Roll	26 UB1523	Gun Plug Terminal Female
7 USP36001	Motor Body	27 UB1522	Cable Terminal Male
8 USP36006	Wire Guide	28 UB1505	Lock Nut
9 SC2563	Screw	29 SCSP1-1	Gun Plug Housing Screw
10 MIG8015	Cable Support	30 SC2578HL/L	Gun Plug Housing Assembly
11 PLSP2403-60ER	Cable Assembly, Euro Type	31 UBL1541	Gun Plug Screw
12 UKA3X20	Handle Screw Pack	32 ECEM1528-2	ECE Miller® Power End Moulding
13 USP2515SP-B	Spool Holder	33 SC2578-SP1	Housing Stopper
14 USP2515SP-C	Spool Cover	34 9 x 1.5	'O' Ring
15 USP2515SP-PT-1K	Wire Spool Control 1K Ω	35 7 x 1.5	'O' Ring
USP2515SP-PT-5K	Wire Spool Control 5K Ω		
USP2515SP-PT-10K	Wire Spool Control 10K Ω		
USP2515SP-PT-25K	Wire Spool Control 25K Ω		
USP2515SP-PT0	No Potentiometer		
16 UGP2514-C	Push-Pull Handle Cover		
17 CSP2515/KJ	Spool-On Handle		
18 UGP2516	Push-Pull Tigger		
19 SC2597	Circular Cable Terminal		
20 UB1521	Cable Terminal		
21 UGPMS1	Motor Screw Pack		
22 UGP7020-24-4	Screw		
23 UGP7020W-08	Drive Roll For Steel Wire ϕ 0.8		
UGP7020W-09	Drive Roll For Steel Wire ϕ 0.9		
UGP7020W-10	Drive Roll For Steel Wire ϕ 1.0		
UGP7020W-08U	Drive Roll For Aluminium Wire ϕ 0.8		
UGP7020W-09U	Drive Roll For Aluminium Wire ϕ 0.9		

All products conform to EN60974-7, CE and are RoHS2, REACH and WEEE compliant

PLSP250A Air-Cooled Mig Welding Torch

Rating: 230A CO₂ 200A mixed gas M21, EN60974-7 @ 35% duty cycle. 0.8 to 1.2mm wires



MODEL

Description	Part Number	
	24V	42V
Proline Spool-On 24V Mig Torch Uni End	PLSP250A-24-60AD	PLSP250A-42-60AD
Proline Spool-On 42V Mig Torch Uni End	PLSP250A-24-P1-60AD	PLSP250A-42-P1-60AD

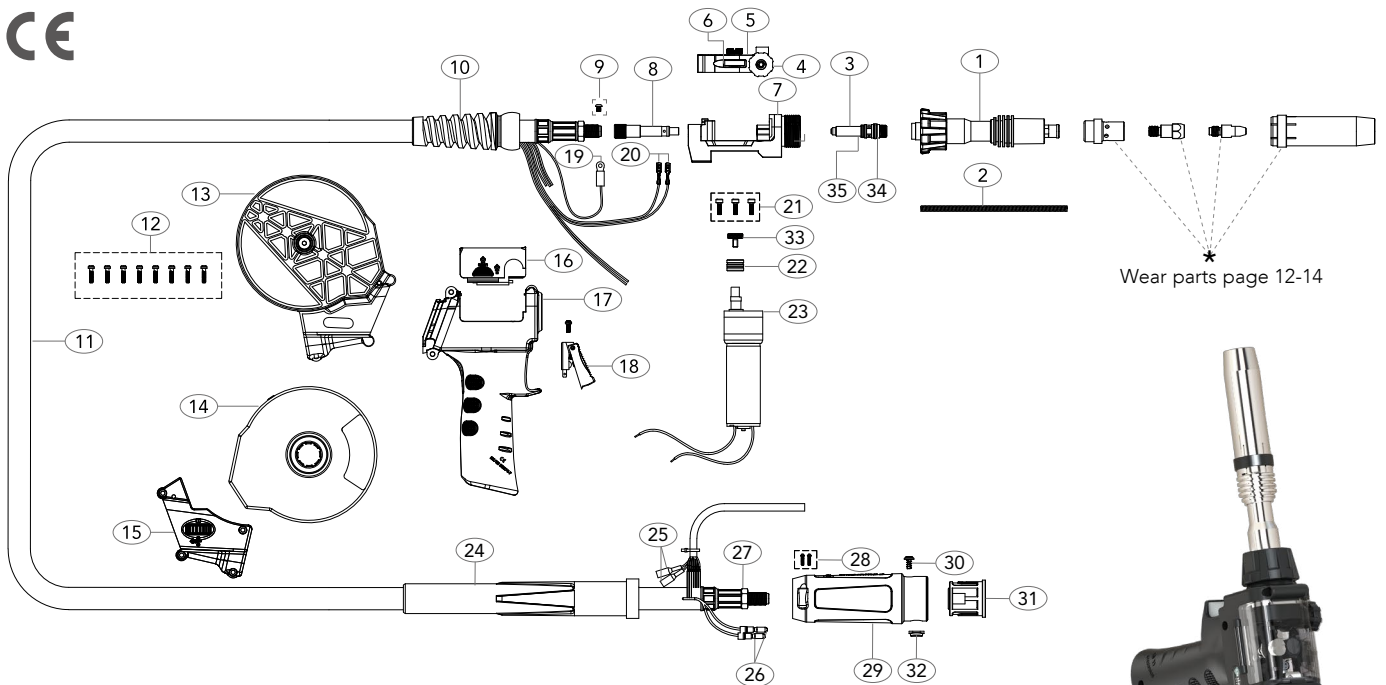
SPARE PARTS

Part Number	Description	Part Number	Description
1 UB2502	Shroud Spring	*UGP7020W-10U	Drive Roll For Aluminium Wire \varnothing 1.0
2 USP2501	Straight Neck	UGP7020W-12U	Drive Roll For Aluminium Wire \varnothing 1.2
3 USP3602A	Jump Liner	24 UGP7020-24	Motor 24V DC
4 UGP36006	Jump Liner Nipple	UGP7020-42	Motor 42V DC
5 UGP36402B	Tension Knob	25 UPA2041	Cable Support
6 UGP36402	Pressure Arm Assembly	26 UB1523	Gun Plug Terminal Female
7 UGP36402R	Pressure Roll	27 UB1522	Cable Terminal Male
8 USP36001	Motor Body	28 UB1505	Lock Nut
9 USP36006	Wire Guide	29 SCSP1-1	Gun Plug Housing Screw
10 SC2563	Screw	30 SC2578HL/L	Gun Plug Housing Assembly
11 MIG8015	Cable Support	31 UBL1541	Gun Plug Screw
12 PLSP2503-60ER	Coax Cable Assembly, Euro	32 ECEM1528-2	ECE Miller [®] Power End Moulding
13 UKA3X20	Handle Screw Pack	33 SC2578-SP1	Housing Stopper
14 USP2515SP-B	Spool Holder	34 UGP7020-24-4	Screw
15 USP2515SP-C	Spool Cover	35 9 x 1.5	'O' Ring
16 USP2515SP-PT-1K	Wire Speed Control 1K Ω	36 7 x 1.5	'O' Ring
USP2515SP-PT-5K	Wire Speed Control 5K Ω		
USP2515SP-PT-10K	Wire Speed Control 10K Ω		
USP2515SP-PT-25K	Wire Speed Control 25K Ω		
USP2515SP-PT0	No Potentiometer		
17 UGP2514-C	Push-Pull Handle Cover		
18 CSP2515/KJ	Spool-On Handle		
19 UGP2516	Push-Pull Trigger		
20 SC2597	Circular Cable Terminal		
21 UB1521	Cable Terminal		
22 UGPMS1	Motor Screw Pack		
23 UGP7020W-08	Drive Roll For Steel Wire \varnothing 0.8		
UGP7020W-09	Drive Roll For Steel Wire \varnothing 0.9		
UGP7020W-10	Drive Roll For Steel Wire \varnothing 1.0		
UGP7020W-08U	Drive Roll For Aluminium Wire \varnothing 0.8		
UGP7020W-09U	Drive Roll For Aluminium Wire \varnothing 0.9		

All products conform to EN60974-7, **CE** and are RoHS2, REACH and WEEE compliant

PLSP360A Air-Cooled Mig Welding Torch

Rating: 300A CO₂ 270A mixed gas M21, EN60974-7 @ 35% duty cycle. 0.8 to 1.2mm wires



Wear parts page 12-14



MODEL

Description	Part Number	
	24V	42V
Proline Spool-On 24V Mig Torch Uni End	PLSP360A-24-60AD	PLSP360A-42-60AD
Proline Spool-On 42V Mig Torch Uni End	PLSP360A-24-P1-60AD	PLSP360A-42-P1-60AD

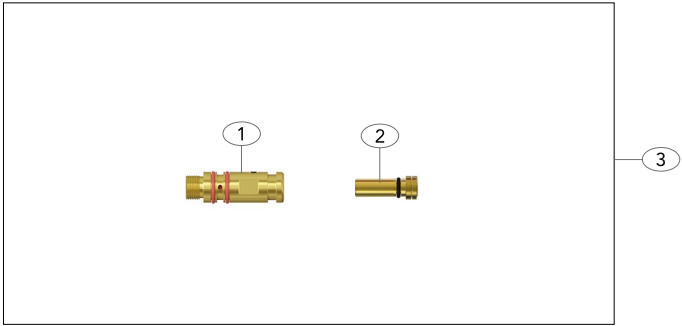
SPARE PARTS

Part Number	Description	Part Number	Description
1	UGP3603A Straight Neck	*UGP7020W-10U	Drive Roll For Aluminium Wire ϕ 1.0
2	UGP3602A Jump Liner	UGP7020W-12U	Drive Roll For Aluminium Wire ϕ 1.2
3	UGP36006 Jump Liner Nipple	23	UGP7020-24 Motor 24V DC
4	UGP36402B Tension Knob	UGP7020-42	Motor 42V DC
5	UGP36402 Pressure Arm Assembly	24	UPA3541 Cable Support
6	UGP36402R Pressure Roll	25	UB1523 Gun Plug Terminal Female
7	USP36001 Motor Body	26	UB1522 Cable Terminal Male
8	USP36006 Wire Guide	27	UB1505 Lock Nut
9	SC2563 Screw	28	SCSP1-1 Gun Plug Housing Screw
10	MIG8015 Cable Support	29	SC2578HL/L Gun Plug Housing Assembly
11	PLSP2403-60ER Cable Assembly, Euro	30	UBL1541 Gun Plug Screw
12	UKA3X20 Handle Screw Pack	31	ECEM1528-2 ECE Miller® Power End Moulding
13	USP2515SP-B Spool Holder	32	SC2578-SP1 Hybrid Gun Plug Body c/w Spring Pins
14	USP2515SP-C Spool Cover	33	UGP7020-24-4 Screw
15	USP2515SP-PT-1K Wire Speed Control 1K Ω	34	9 x 1.5 'O' Ring
	USP2515SP-PT-5K Wire Speed Control 5K Ω	35	7 x 1.5 'O' Ring
	USP2515SP-PT-10K Wire Speed Control 10K Ω		
	USP2515SP-PT-25K Wire Speed Control 25K Ω		
	USP2515SP-PT0 No Potentiometer		
16	UGP2514-C Push-Pull Handle Cover		
17	CSP2515/KJ Spool-On Handle		
18	UGP2516 Push-Pul Trigger		
19	SC2597 Circular Cable Terminal		
20	UB1521 Cable Terminal		
21	UGPMS1 Motor Screw Pack		
22	UGP7020W-08 Drive Roll For Steel Wire ϕ 0.8		
	UGP7020W-09 Drive Roll For Steel Wire ϕ 0.9		
	UGP7020W-10 Drive Roll For Steel Wire ϕ 1.0		
	UGP7020W-08U Drive Roll For Aluminium Wire ϕ 0.8U		
	UGP7020W-09U Drive Roll For Aluminium Wire ϕ 0.9U		

All products conform to EN60974-7, CE and are RoHS2, REACH and WEEE compliant

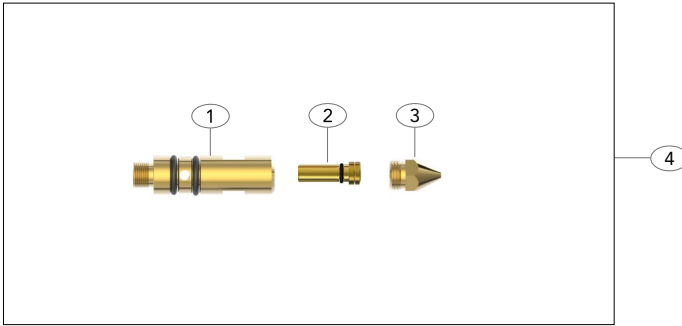
Universal Kits Connector Kits

Tweco® Universal Kit



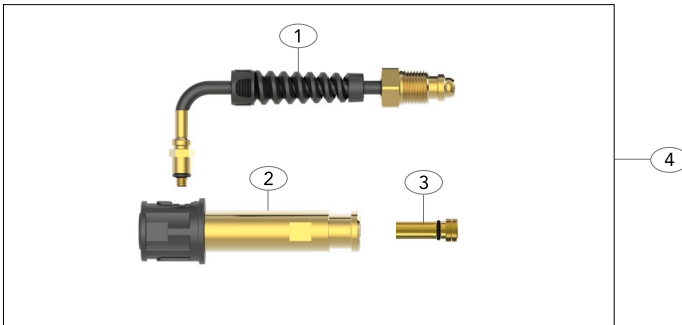
Direct Plug Connector		
Part Number	Description	
1	ECET1575-1	Tweco® 1-4 Power Pin
2	USP1826W	Seal Nipple
3	USP-ECET1575AD	Tweco® Connector Kits

Miller® Universal Kit



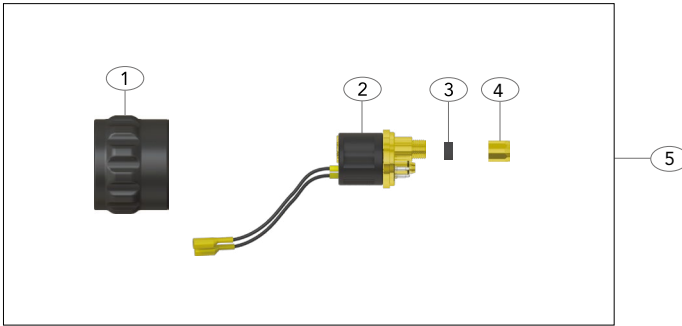
Direct Plug Connector		
Part Number	Description	
1	ECEM1575-1	Miller® Power Pin
2	USP1826W	Seal Nipple
3	ML1570	Wire Guide 0.35"-1/16"
4	USP-ECEM1575AD	Miller® Connector Kits

Lincoln® Universal Kit



Direct Plug Connector		
Part Number	Description	
1	ECEL1575-G	Lincoln® Gas Tube Assembly
2	ECEL1575	Lincoln® Power Pin Assembly
3	USP1826W	Seal Nipple
4	USP-ECEL1575AD	Lincoln® Connector Kit

Euro Universal Kit

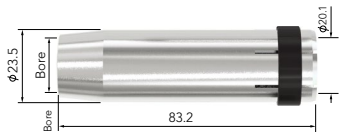
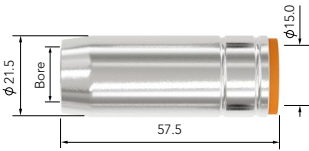
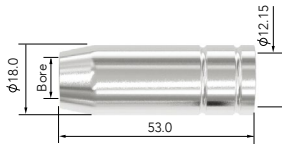


Direct Plug Connector		
Part Number	Description	
1	UC1519-S	Gun Plug Nut
2	UC1528	Hybrid Gun Plug Body c/w Spring Pins
3	UB1525W	Gas Seal Gasket
4	UB1525	Liner Nut
5	USP-UC1528AD	Euro Connector Kits



Universal Set-up Guide
A simple step by step guide

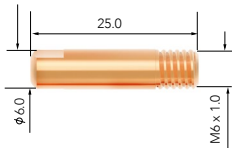
Wear Parts



Nozzles

Part No.	Description	Bore	Wall	Material	PLSP150A	PLSP240A	PLSP250A	PLSP360A
UB1529	Cylindrical Nozzle	16.0	1.0mm	Copper	●	●	●	●
UB1530	Conical Nozzle	12.0	1.0mm	Copper	●	●	●	●
UB1531	Tapered Nozzle	10.5	1.0mm	Copper	●	●	●	●
UB1532	Bottle Nozzle	12.8	1.0mm	Copper	●	●	●	●
UB1533	Spot Welding Nozzle	16.0	1.0mm	Copper	●	●	●	●
UB2415	Cylindrical Nozzle	17.2	1.4mm	Copper	●	●	●	●
UB2416	Conical Nozzle	12.6	1.4mm	Copper	●	●	●	●
UB2417	Tapered Nozzle	10.0	1.4mm	Copper	●	●	●	●
UB2507	Cylindrical Nozzle	18.0	1.75mm	Copper	●	●	●	●
UB2508	Conical Nozzle	15.0	1.75mm	Copper	●	●	●	●
UB2509	Tapered Nozzle	12.0	1.75mm	Copper	●	●	●	●
UB2510	Bottle Nozzle	14.5	1.75mm	Copper	●	●	●	●
UB2511	Spot Welding Nozzle	18.0	1.75mm	Copper	●	●	●	●
UB3615	Cylindrical Nozzle	19.0	2.25mm	Copper	●	●	●	●
UB3616	Conical Nozzle	16.1	2.25mm	Copper	●	●	●	●
UB3617	Tapered Nozzle	12.0	2.25mm	Copper	●	●	●	●

Wear Parts



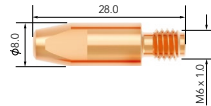
Contact Tips

Part No.	Description	Material	Wire size mm-inch	PLSP150A	PLSP240A	PGSP250A	PGSP360A
M6 x 25							
UB1527-06	Contact Tip	Copper	0.6-0.023	●	●	●	●
UB1527-08	Contact Tip	Copper	0.8-0.030	●	●	●	●
UB1527-09	Contact Tip	Copper	0.9-0.035	●	●	●	●
UB1527-10	Contact Tip	Copper	1.0-0.040	●	●	●	●
UB1527-08A	Contact Tip	Copper	0.8-0.030	●	●	●	●
UB1527-09A	Contact Tip	Copper	0.9-0.035	●	●	●	●
UB1527-10A	Contact Tip	Copper	1.0-0.040	●	●	●	●

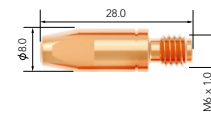
● Standard wear part range ● Torch package standard wear part set-up

Wear Parts

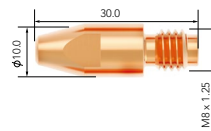
Contact Tips



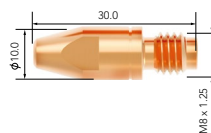
Part No.	Description	Material	Wire size mm-inch	PLSP150A	PLSP240A	PGSP250A	PGSP360A
M6 x 28							
UB2504-06	Contact Tip	Ecu	0.6-0.023	●	●	●	●
UB2504-08	Contact Tip	Ecu	0.8-0.030	●	●	●	●
UB2504-09	Contact Tip	Ecu	0.9-0.035	●	●	●	●
UB2504-10	Contact Tip	Ecu	1.0-0.040	●	●	●	●
UB2504-10A	Contact Tip	Ecu	1.0-0.040	●	●	●	●



M6 x 28							
UB2505-08	Contact Tip	CuCrZr	0.8-0.030	●	●	●	●
UB2505-09	Contact Tip	CuCrZr	0.9-0.035	●	●	●	●
UB2505-10	Contact Tip	CuCrZr	1.0-0.040	●	●	●	●
UB2505-10A	Contact Tip	CuCrZr	1.0-0.040	●	●	●	●



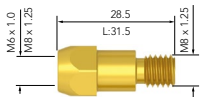
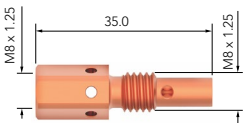
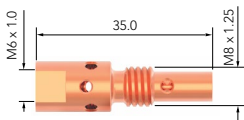
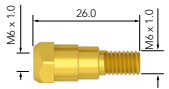
M8 x 30							
UB4014-08	Contact Tip	Copper	0.8-0.030	●	●	●	●
UB4014-09	Contact Tip	Copper	0.9-0.035	●	●	●	●
UB4014-10	Contact Tip	Copper	1.0-0.040	●	●	●	●
UB4014-10A	Contact Tip	Copper	1.0-0.040	●	●	●	●
UB4014-12A	Contact Tip	Copper	1.2-0.045	●	●	●	●



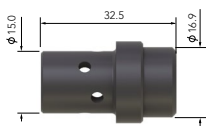
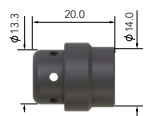
M8 x 30							
UB4015-08	Contact Tip	CuCrZr	0.8-0.030	●	●	●	●
UB4015-09	Contact Tip	CuCrZr	0.9-0.035	●	●	●	●
UB4015-10	Contact Tip	CuCrZr	1.0-0.040	●	●	●	●
UB4015-10A	Contact Tip	CuCrZr	1.0-0.040	●	●	●	●
UB4015-12A	Contact Tip	CuCrZr	1.2-0.045	●	●	●	●

● Standard wear part range ● Torch package standard wear part set-up

Wear Parts



Wear Parts



Tip Adaptors

Part No.	Description	Material	PLSP150A	PLSP240A	PGSP250A	PGSP360A
UB1507L/H	Tip Adaptor Left Hand	Brass	●	●	●	●
UB2412	Tip Adaptor	Brass	●	●	●	●
UB2506	Tip Adaptor	Brass	●	●	●	●
UB2536	Tip Adaptor	Brass	●	●	●	●
UB3612	Tip Adaptor	Brass	●	●	●	●
UB3613	Tip Adaptor	Brass	●	●	●	●
UB3614	Tip Adaptor	Brass	●	●	●	●

Diffusers

Part No.	Description	Colour	Material	PLSP150A	PLSP240A	PGSP250A	PGSP360A
UB2405B	Diffuser	Black	DMC3	●	●	●	●
UB2405C	Diffuser	White	Ceramic	●	●	●	●
UB2405W	Diffuser	White	DMC3	●	●	●	●
UB3605B	Diffuser	Black	DMC3	●	●	●	●
UB3605C	Diffuser	White	Ceramic	●	●	●	●
UB3605W	Diffuser	White	DMC3	●	●	●	●

● Standard wear part range ● Torch package standard wear part set-up

Welding & Cutting Torch Technology

JINAN UNIARC WELDING TECHNOLOGY CO., LTD

13A Zhangjin Comprehensive Bonded Zone
33688, Jing Shi Dong Road
Jinan Area of China (Shandong) Pilot Free Trade Zone
Jinan 250102, P.R. China

Tel: +86 531 88239823

Website: www.uniarctorchology.com

Email: info@uniarctorchology.com

MPU005 / V.2024.02