



Welding & Cutting Torch Technology

Product Catalogue

SPR MIG/MAG Series



About Us

Uniarc is part of a group of companies specializing in the production of Welding and Cutting torches.

With over 40 years experience, the group is positioned as a global leader at the heart of the welding torch industry.

Originally established in the United Kingdom in the 1980's, the company is now a fully-fledged, vertically integrated Chinese product innovator and manufacturer.

Our customers span a full cross section of the industry, ranging from general distribution to leading global original equipment manufacturers.

Our products are used in a broad cross-section of industrial sectors ranging from auto body repair to ship building.

Whether you need a standard off the shelf product or a customized branded option with your own colours, logos and packaging we have a one stop solution for your requirements.

Our team are here to help, contact us today if you need anymore information.



find out more www.uniarctorchology.com

Contents

	Features Focus	4
	Range Overview	5
	<hr/>	
Euro End	Torch Model	
	SPR NO.2	6
	SPR NO.4	7
	<hr/>	
	Features Focus	8
	Range Overview	9
	<hr/>	
Universal System	Torch Model	
	SPR NO.2	10
	SPR NO.4	11
	Universal Kits	12
	<hr/>	
	Wear Parts	
	SPR Nozzles	14
	SPR Contact Tips	14
	SPR Diffusers	15
	SPR Liners	16

Contact Tips

Heavy duty contact tips increase tip life and decrease downtime with fewer tip changes.

- Improved performance for high heat applications

Diffuser

Heavy duty diffusers used with heavy duty tips increase tip life.

- Improved performance for high heat applications.

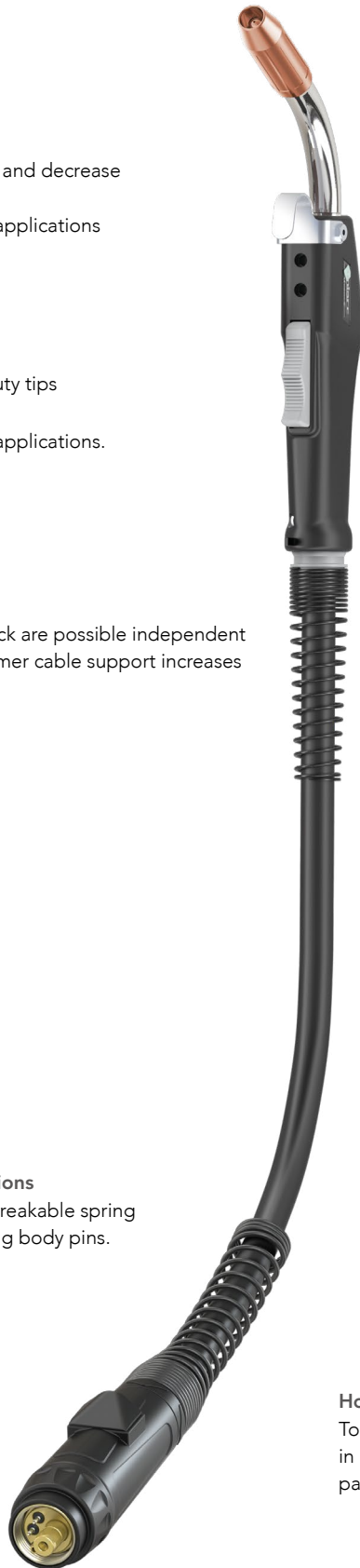
Knuckle Joint and Cable Support

Small movements of the handle and neck are possible independent of the cable assembly. A moulded polymer cable support increases flexibility and electrode support.



Euro Terminations

Fitted with unbreakable spring loaded gun plug body pins.



Nozzles

Manufactured to the same specification as the original manufacturer ensuring reliability, longevity and superior performance

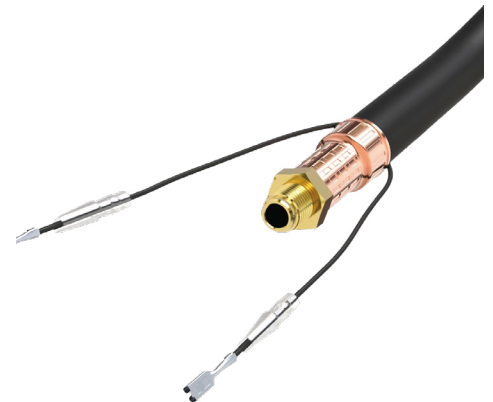
Handles and Cable Supports

Designed to combine balance, positioning and ergonomics with practical torch performance, cable life and consistent wire feed.

Cable Systems

Lite cable sets offer 30-40% weight saving at equivalent performance levels.

The outer jacket is constructed from cross-linked polymers providing a tear proof outer with a burn threshold of 375°C.



Rear Cable Support

Extra length cable support systems ensure smooth and consistent wire feed at any angle.

Housings, Nuts and Supports

Tough and damage resistant, housings and nuts are formed in robust glass-reinforced polymers encasing all conductive parts in accordance with EN60974-7.

SPR Mig/Mag Range

Ratings: 150 Amp to 350 Amp, Mixed Gas M21

Euro Terminations



Technical Data

Cooling Method
 Rating: CO₂
 Rating: Mixed Gas M21
 Duty Cycle:
 Wire Size:

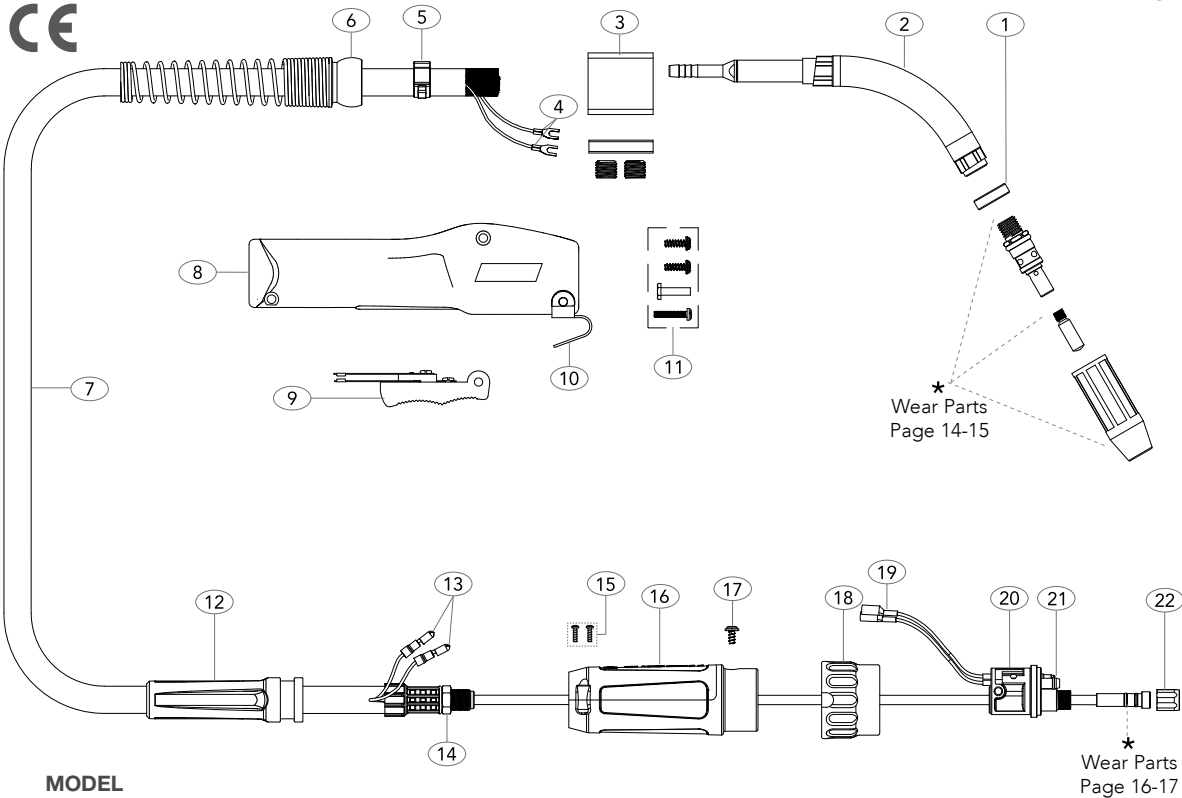
SPR NO.2
 Air-Cooled
 200A
 150A
 60%
 0.6-1.2mm/
 0.023-0.045"

SPR NO.4
 Air-Cooled
 400A
 350A
 60%
 0.8-2.0mm/
 0.030-5/64"

Order Codes	10ft / 3mt	UDU2-SP-10E	UDU4-SP-10E
	12ft / 4mt	UDU2-SP-12E	UDU4-SP-12E
	15ft / 5mt	UDU2-SP-15E	UDU4-SP-15E

SPR NO.2 Air-Cooled Mig Welding Torch

Rating: 200A CO₂ 150A mixed gas M21, EN60974-7 @ 60% duty cycle. 0.6 to 1.2mm / 0.023-0.045" wires
Euro Terminations



MODEL

Description	Part Number		
SPR Euro End Mig Torch Range	10ft / 3mt UDU2-SP-10E	12ft / 4mt UDU2-SP-12E	15ft / 5mt UDU2-SP-15E

Spare part

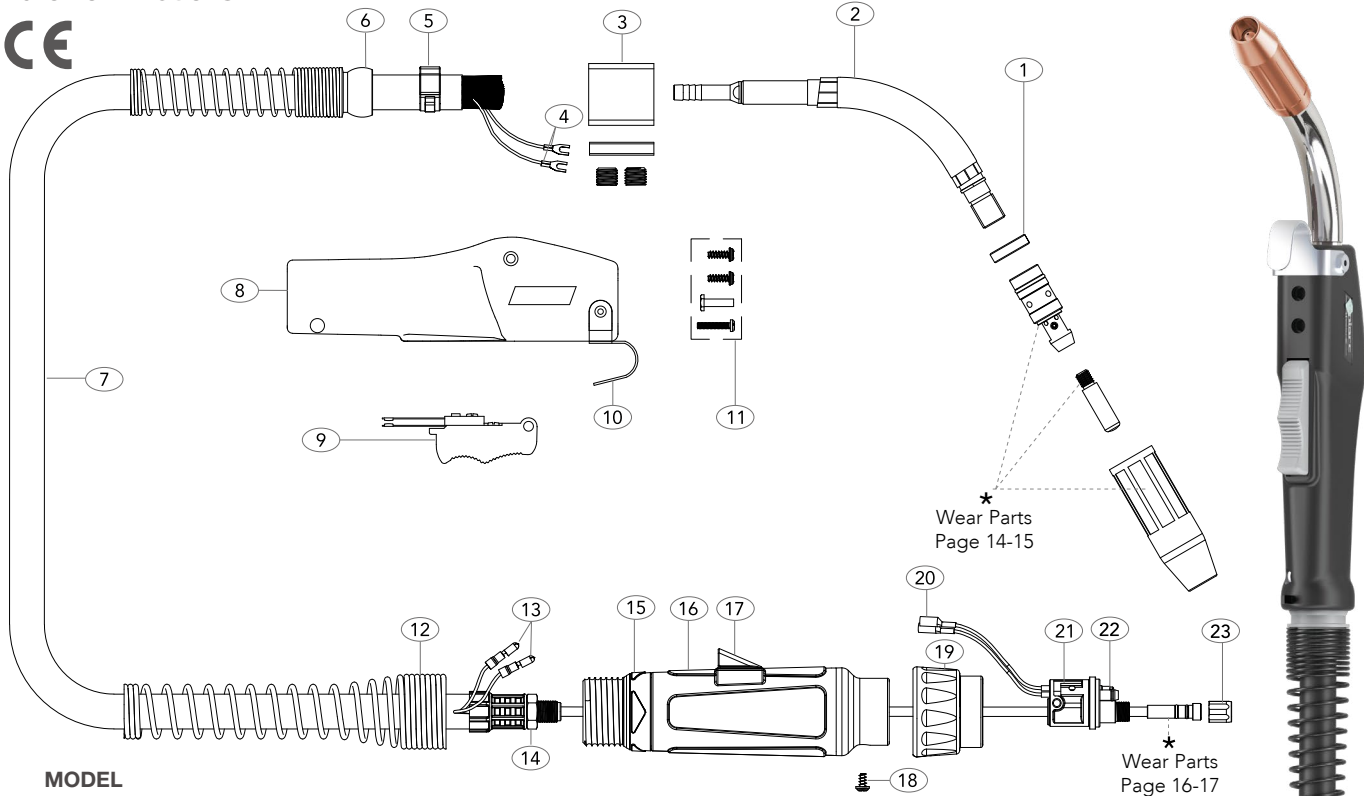
Part Number	Description	Part Number	Description
1	U62J-3S Head Insulator	12	UC3641 Cable Support
2	U62J60-SP Metal Jacket Swan Neck	13	UB1522 Cable Terminal Male
3	UDU102 Block c/w Spacer & Screws	14	UXL1542 Cable End Lock Nut (M12 x 1.0)
4	U244T Control Wire Terminals	15	SCSP1-1 Gun Plug Housing Screw
5	UB5044 Hose Clamp 18.5mm	16	SC2578/S Gun Plug Housing
6	U141-6S Spring Cable Support Small & Ball Joint	17	UBL1541 Gun Plug Screw
7	UDU200-10E Cable Assembly x 10ft	18	UC1519/S Gun Plug Nut
UDU200-12E	Cable Assembly x 12ft	19	UB1523 Gun Plug Terminal Female
UDU200-15E	Cable Assembly x 15ft	20	UC174EX-1 Gun Plug Body
8	UP83 Handle With Hook & Screw	21	UB1524 Gun Plug 'O' Ring
9	U92 Trigger Switch	22	UXL1826 Liner Retaining Nut
10	U152 Hanger Hook		
11	U122FMS Screw Pack		

All products conform to EN60974-7, CE and are RoHS2, REACH and WEEE compliant

SPR NO.4 Air-Cooled Mig Welding Torch

Rating: 400A CO₂, 350A mixed gas M21, EN60974-7 @ 60% duty cycle. 0.8 to 2.0mm / 0.030-5/64" wires

Euro Terminations



MODEL	Description	Part Number	10ft / 3mt	12ft / 4mt	15ft / 5mt
	SPR Euro End Mig Torch Range		UDU4-SP-10E	UDU4-SP-12E	UDU4-SP-15E

Spare parts

Part Number	Description	Part Number	Description
1	U64J-3S Head Insulator	12	UC8026 Housing Spring
2	U64J60 Metal Jacket Swan Neck	13	UB1522 Cable Terminal Male
3	UDU104 Connection Block c/w Spacer	14	UXL1542 Cable End Lock Nut (M12 x 1.0)
4	U244T Control Wire Terminals	15	UT8028 Cable Support Nut
5	U132-14 Cable Hose Clamp	16	UT5022 Large Housing
6	UBE8018 Spring Cable Support & Ball Joint	17	SC8017 Large Housing Wire Cover
7	UDU400-10E Cable Assembly x 10ft	18	UBL1541 Gun Plug Screw
	UDU400-12E Cable Assembly x 12ft	19	UB1519/S Gun Plug Nut
	UDU400-15E Cable Assembly x 15ft	20	UB1523 Gun Plug Terminal Female
8	UP84A Handle With Hook & Screw	21	UC174EX-1 Gun Plug Body
9	U94R Trigger Switch	22	UB1524 Gun Plug 'O' Ring
10	U154 Hanger Hook	23	UXL1826 Liner Retaining Nut
11	U124FMS Screw Pack		

All products conform to EN60974-7, CE and are RoHS2, REACH and WEEE compliant

Nozzles

Manufactured to the same specification as the original manufacturer ensuring reliability, longevity and superior performance

Diffuser

Heavy duty diffusers used with heavy duty tips increase tip life.

- Improved performance for high heat applications.

Knuckle Joint and Cable Support

Small movements of the handle and neck are possible independent of the cable assembly. A moulded polymer cable support increases flexibility and electrode support.



Terminations
A comprehensive range of USA style terminations ensures worldwide compatibility.

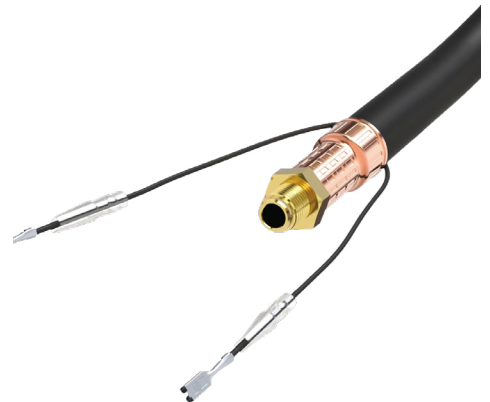
Handles and Cable Supports

Designed to combine balance, positioning and ergonomics with practical torch performance, cable life and consistent wire feed.

Cable Systems

Lite cable sets offer 30-40% weight saving at equivalent performance levels.

The outer jacket is constructed from cross-linked polymers providing a tear proof outer with a burn threshold of 375°C.



Rear Cable Support

Extra length cable support systems ensure smooth and consistent wire feed at any angle.

Housings, Nuts and Supports

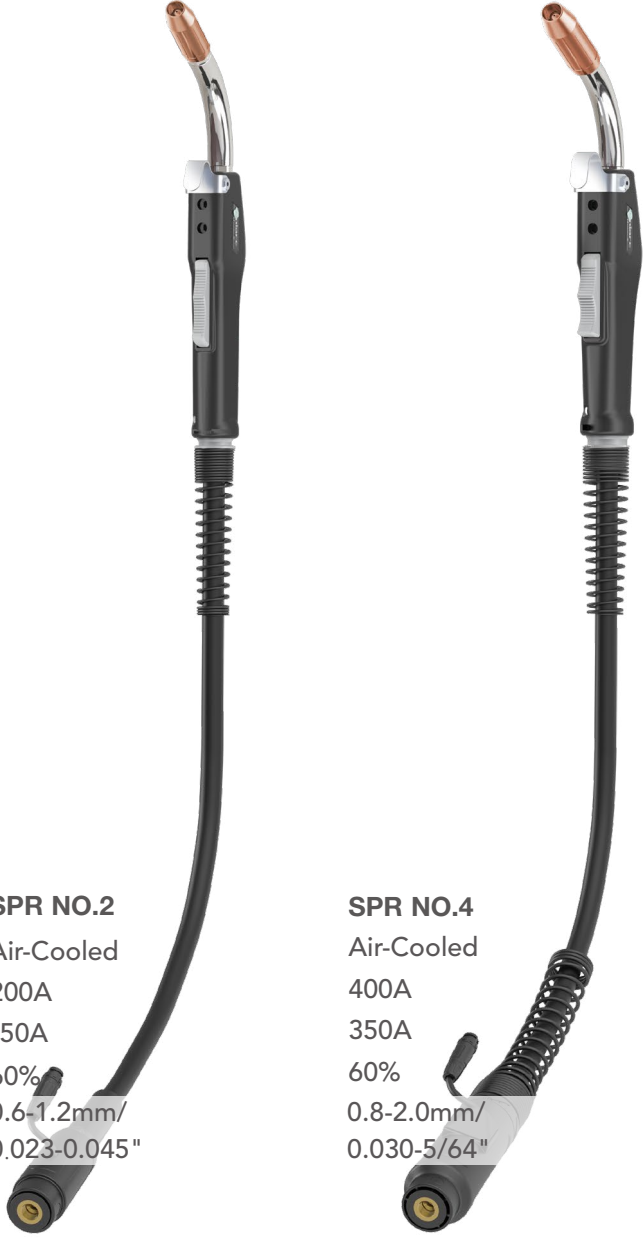
Tough and damage resistant, housings and nuts are formed in robust glass-reinforced polymers encasing all conductive parts in accordance with EN60974-7.



SPR Mig / Mag Air-Cooled Series

Ratings: 150 Amp to 350 Amp, Mixed Gas M21

Universal Terminations



Technical Data

Cooling Method
 Rating: CO₂
 Rating: Mixed Gas M21
 Duty Cycle:
 Wire Size:

SPR NO.2
 Air-Cooled
 200A
 150A
 60%
 0.6-1.2mm/
 0.023-0.045"

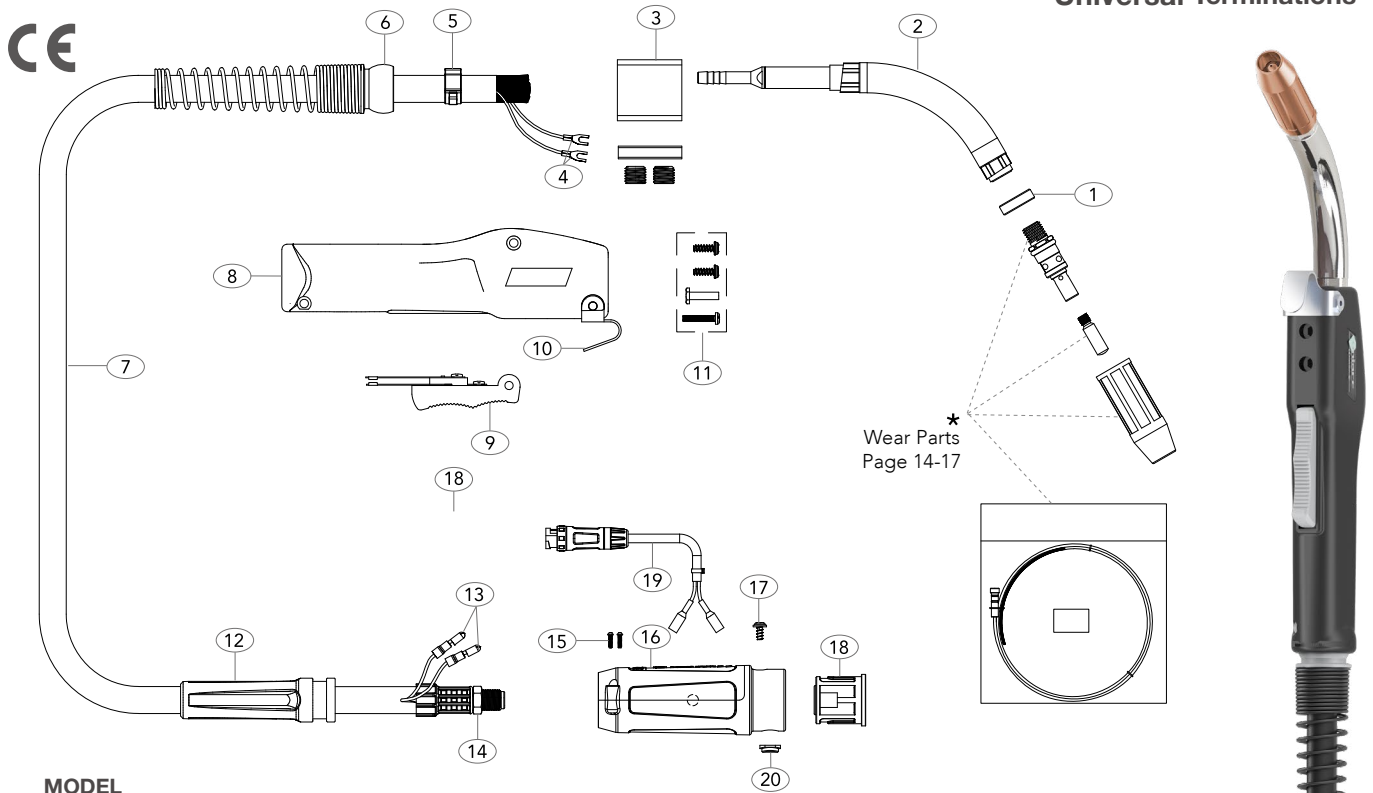
SPR NO.4
 Air-Cooled
 400A
 350A
 60%
 0.8-2.0mm/
 0.030-5/64"

Order Codes	10ft / 3mt	UDU2-SP-10AD	UDU4-SP-10AD
	12ft / 4mt	UDU2-SP-12AD	UDU4-SP-12AD
	15ft / 5mt	UDU2-SP-15AD	UDU4-SP-15AD

SPR NO.2 Air-Cooled Mig Welding Torch

Rating: 200A CO₂ 150A mixed gas M21, EN60974-7 @ 60% duty cycle. 0.6 to 1.2mm / 0.023-0.045" wires

Universal Terminations



MODEL

Description	Part Number		
TWC No 2 Torch Package - Uni System	10ft / 3mt UDU2-SP-10AD	12ft / 4mt UDU2-SP-12AD	15ft / 5mt UDU2-SP-15AD

Spare part

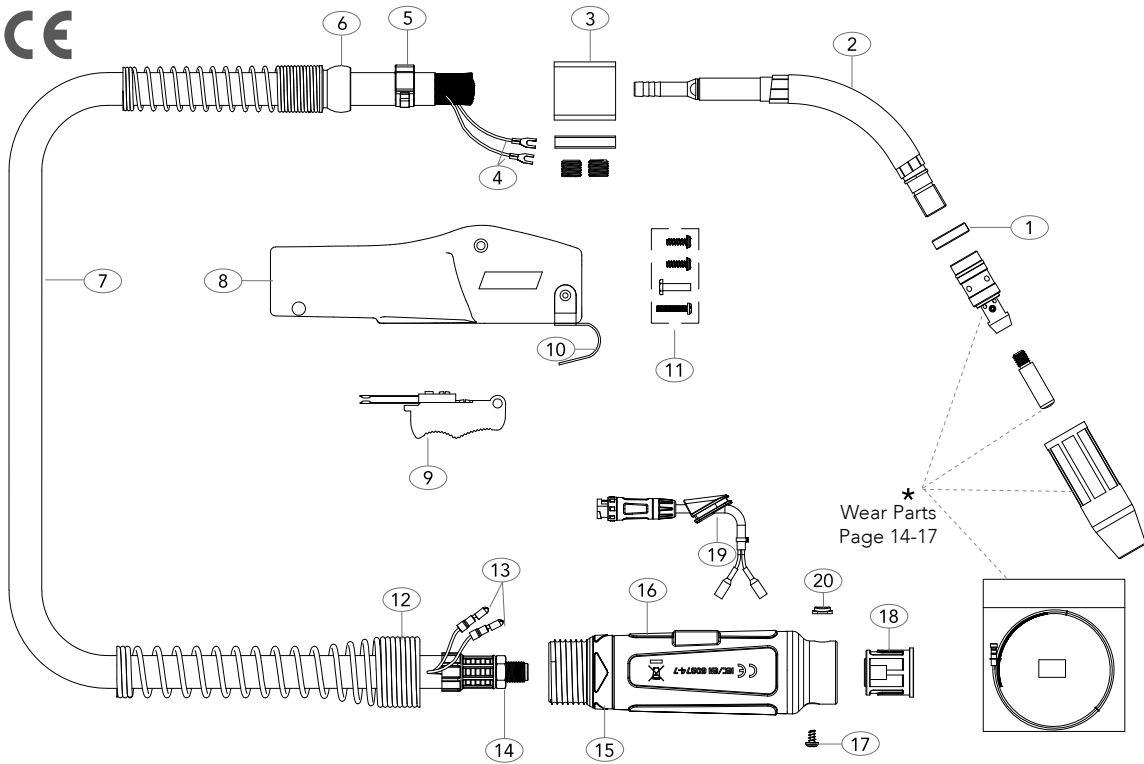
Part Number	Description	Part Number	Description
1	U62J60-3S Head Insulator	13	UB1522 Cable Terminal Male
2	U62J60-SP Metal Jacket Swan Neck	14	UXL1542 Cable End Lock Nut (M12X1.0)
3	UDU102 Block c/w Spacer & Screws	15	SCSP1-1 Gun Plug Housing Screw
4	U244T Control Wire Terminals	16	SC2578HL-S Gun Plug Housing
5	UB5044 Hose Clamp 18.5mm	17	UBL1541 Gun Plug Screw
6	U141-6S Spring Cable Support Small & Ball Joint	18	ECM1575-2 Hybrid Plug Body TWC 1-4
7	UDU200-10E Cable Assembly x 10ft	19	UQF-SW Male Switch Wire Plug
	UDU200-12E Cable Assembly x 12ft	20	SC2578-SP1 Housing Stopper
	UDU200-15E Cable Assembly x 15ft		
8	UP83 Handle With Hook & Screw		
9	U92 Trigger Switch		
10	U152 Hanger Hook		
11	U122FMS Screw Pack		
12	UC3641 Cable Support		

All products conform to EN60974-7, CE and are RoHS2, REACH and WEEE compliant

SPR NO.4 Air-Cooled Mig Welding Torch

Rating: 400A CO₂ 350A mixed gas, M21 EN60974-7 @ 60% duty cycle. 0.8 to 2.0mm / 0.030-5/64" wires

Universal Terminations



MODEL

Description	Part Number		
TWC No 4 Torch Package - Uni System	10ft / 3mt UDU4-SP-10AD	12ft / 4mt UDU4-SP-12AD	15ft / 5mt UDU4-SP-15AD

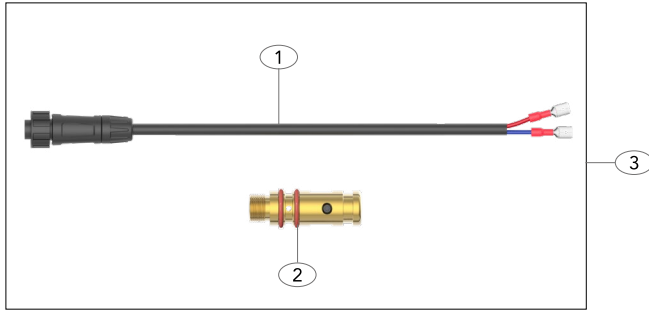
Spare part

Part Number	Description	Part Number	Description
1	U64J-3S Head Insulator	13	UB1522 Cable Terminal Male
2	U64J60-SP Metal Jacket Swan Neck	14	UXL1542 Cable End Lock Nut (M12 x 1.0)
3	UDU104 Connection Block c/w Spacer	15	UT8028 Spring Cable Support Nut
4	U244T Control Wire Terminals	16	UT5022-L Gun Plug Housing Assembly
5	U134-14 Cable Hose Clamp	17	UBL1541 Gun Plug Screw
6	UBE8018 Spring Cable Support & Ball Joint	18	ECEM1575-2 Hybrid Plug Body TWC 1-4
7	UDU400-10E Cable Assembly x 10ft	19	UQF-SW-C Male Switch Wire Plug With SC8017
	UDU400-12E Cable Assembly x 12ft	20	SC2578-SP1 Housing Stopper
	UDU400-15E Cable Assembly x 15ft		
8	UP84A Handle With Hook & Screw		
9	U94R Trigger Switch		
10	U154 Hanger Hook		
11	U124FMS Screw Pack		
12	UC8026 Housing Spring		



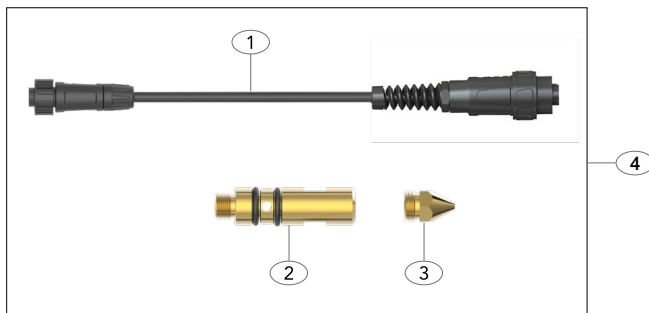
All products conform to EN60974-7, **CE** and are RoHS2, REACH and WEEE compliant

Tweco® Universal Kit



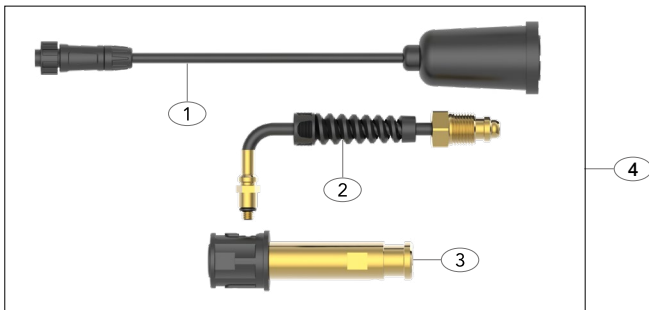
Direct Plug Connector	
Part Number	Description
1	ECEL1575-SW-Q Quick Fit Switch Wire Assembly
2	ECET1575-1 Tweco® 1-4 Power Pin
3	ECET1575K-Q Quick Fit Connector Kit Complete

Miller® Universal Kit



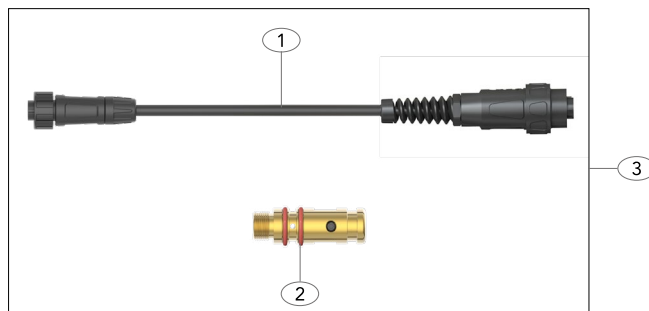
Direct Plug Connector	
Part Number	Description
1	ECEM1575-SW-Q Quick Fit Miller® Plug Assembly
2	ECEM1575-1 Miller® Power Pin
3	ML1570 Wire Guide 0.35"-1/16"
	ML1571 Wire Guide 5/16-3/32"(Option)
4	ECEM1575K-Q Quick Fit Connector Kit Complete

Lincoln® Universal Kit



Direct Plug Connector	
Part Number	Description
1	M16725-Q Quick Fit Lincoln® Plug Assembly
2	ECEL1575-G Lincoln® Gas Tube Assembly
3	ECEL1575 Lincoln® Power Pin
4	ECEL1575K-Q Quick Fit Connector Kit Complete

LPW Universal Kit



Direct Plug Connector	
Part Number	Description
1	ECEM1575-SW-Q Quick Fit Miller® Plug Assembly
2	ECET1575-1 Tweco® 1-4 Power Pin
3	ECEW1575K-Q Quick Fit Connector Kit Complete



Universal Set-up Guide

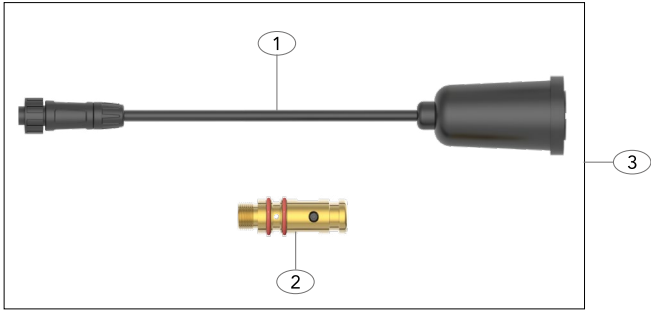
A simple step by step guide

All products conform to EN60974-7, **CE** and are RoHS2, REACH and WEEE compliant

Universal Kits

Connector Kits

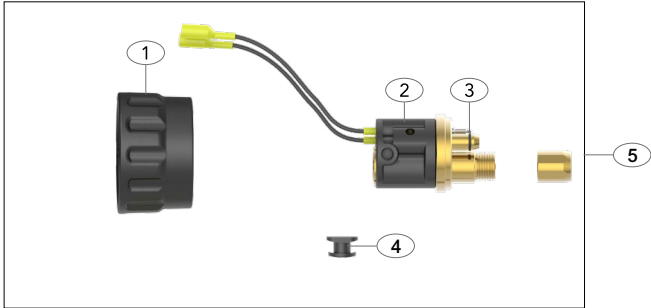
LPB Universal Kit



Direct Plug Connector	
Part Number	Description
1 M16725-Q	Quick Fit Lincoln® Plug Assembly
2 ECET1575-1	Tweco® 1-4 Power Pin
3 ECEB1575K-Q	Quick Fit Connector Kit Complete

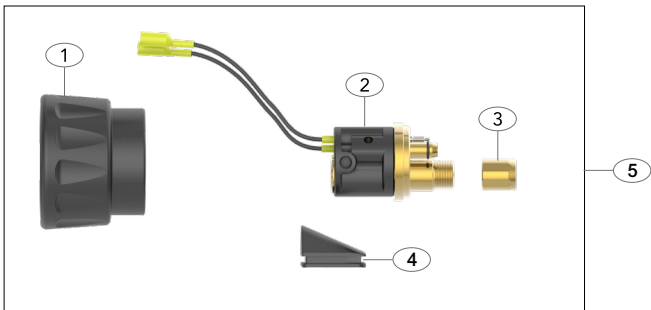
Euro Connector Kits

SPR No.2 Universal Kit



Direct Plug Connector	
Part Number	Description
1 UC1519-S	Gun Plug Nut
2 UC174EX-1	Gun Plug Body
3 UXL1826	Liner Retaining Nut
4 SC2578-SP2	Housing Stopper
5 UC174EX-1-KIT-QS	Quick Fit Connector Kit Complete

SPR NO.4 Universal Kit



Direct Plug Connector	
Part Number	Description
1 UB1519-S	Gun Plug Nut
2 UC174EX-1	Gun Plug Body
3 UXL1826	Liner Retaining Nut
4 SC8017	Large Housing Wire Cover
5 UC174EX-1-KIT-QL	Quick Fit Connector Kit Complete



Universal Set-up Guide
A simple step by step guide

All products conform to EN60974-7, and are RoHS2, REACH and WEEE compliant

Wear Parts

SPR Nozzles

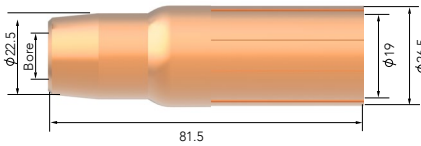
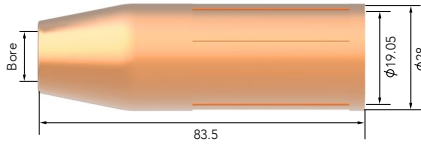
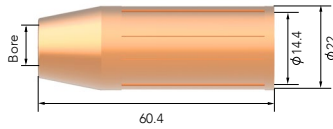
Part No. Description Bore Length Wall Material

SPR NO.2
SPR NO.4

HD22-37	Nozzle 3/8"	9.5	60.4mm	1.5mm	Copper	●	●
HD22-50	Nozzle 1/2"	12.7	60.4mm	1.5mm	Copper	●	●
HD22-62	Nozzle 5/8"	15.9	60.4mm	1.5mm	Copper	●	●

HD24-50	Nozzle 1/2"	12.7	83.5mm	1.5mm	Copper	●	●
HD24-62	Nozzle 5/8"	15.9	83.5mm	1.5mm	Copper	●	●
HD24-75	Nozzle 3/4"	19	83.5mm	1.5mm	Copper	●	●

HD24L-52	Nozzle 5/8"	15.9	81.5mm	2mm	Copper	●	●
----------	-------------	------	--------	-----	--------	---	---



Wear Parts

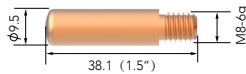
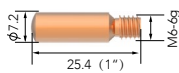
SPR Contact Tips

Part No. Description Material Wire Size mm-inch

SPR NO.2
SPR NO.4

11H-30	Contact Tip	Ecu	0.8-0.030"	●	●
11H-35	Contact Tip	Ecu	0.9-0.035"	●	●
11H-40	Contact Tip	Ecu	1.0-0.040"	●	●
11H-45	Contact Tip	Ecu	1.2-0.045"	●	●

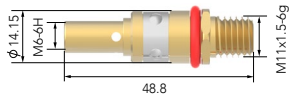
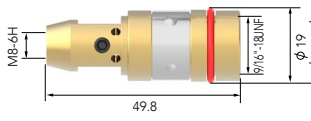
16S-35	Contact Tip	Ecu	0.9-0.035"	●	●
16S-40	Contact Tip	Ecu	1.0-0.040"	●	●
16S-45	Contact Tip	Ecu	1.2-0.045"	●	●
16S-52	Contact Tip	Ecu	1.3-0.052"	●	●
16S-116	Contact Tip	Ecu	1.6-1/16"	●	●
16S-564	Contact Tip	Ecu	2.0-5/64"	●	●



● Standard wear part range ● Torch package standard wear part set-up

Wear Parts

SPR Diffusers

Part No.	Description	Bore	Material	SPR NO.2	SPR NO.4
 <p>Technical drawing of HD52-11 Gas Diffuser showing dimensions: $\phi 14.15$, M6-6H, 48.8, M11x1.5-6g.</p>	HD52-11	Gas Diffuser	Brass	●	●
 <p>Technical drawing of HD54-16 Gas Diffuser showing dimensions: M8-6H, 49.8, $\phi 19$, 9/16"-18UNF.</p>	HD54-16	Gas Diffuser	Brass	●	●






● Standard wear part range ● Torch package standard wear part set-up

Wear Parts

SPR Liners						SPR NO.2	SPR NO.4
Part No.	Length	Description	Nipple	Wire Size mm-INCH			
							
U42-3035-15	4.90mt	Steel Liner x 15ft	Moulded Nipple	0.8-0.9/0.030-0.035"	●	●	
U42-3035-25	8.10mt	Steel Liner x 25ft	Moulded Nipple	0.8-0.9/0.030-0.035"	●	●	
							
UA42-3035-15	4.90mt	Steel Liner x 15ft	Brass Nipple	0.8-0.9/0.030-0.035"	●	●	
UA42-3035-25	8.10mt	Steel Liner x 25ft	Brass Nipple	0.8-0.9/0.030-0.035"	●	●	
							
U42-4045-15	4.90mt	Steel Liner x 15ft	Moulded Nipple	1.0-1.2/0.040-0.045"	●	●	
U42-4045-25	8.10mt	Steel Liner x 25ft	Moulded Nipple	1.0-1.2/0.040-0.045"	●	●	
							
UA42-4045-15	4.90mt	Steel Liner x 15ft	Brass Nipple	1.0-1.2/0.040-0.045"	●	●	
UA42-4045-25	8.10mt	Steel Liner x 25ft	Brass Nipple	1.0-1.2/0.040-0.045"	●	●	
							
U42N-4045-15	4.90mt	Polyamide Liner x 15ft	Brass Nipple	1.0-1.2/0.040-0.045"	●	●	
U42N-4045-25	8.10mt	Polyamide Liner x 25ft	Brass Nipple	1.0-1.2/0.040-0.045"	●	●	
							
U44-3545-15	4.90mt	Steel Liner x 15ft	Moulded Nipple	0.9-1.2/0.035-0.045"	●	●	
U44-3545-25	8.10mt	Steel Liner x 25ft	Moulded Nipple	0.9-1.2/0.035-0.045"	●	●	
							
UA44-3545-15	4.90mt	Steel Liner x 15ft	Brass Nipple	0.9-1.2/0.035-0.045"	●	●	
UA44-3545-25	8.10mt	Steel Liner x 25ft	Brass Nipple	0.9-1.2/0.035-0.045"	●	●	

● Standard wear part range ● Torch package standard wear part set-up

Wear Parts

SPR Liners						SPR NO.2	SPR NO.4
Part No.	Length	Description	Nipple	Wire Size mm-INCH			
							
U44-116-15	4.90mt	Steel Liner x 15ft	Moulded Nipple	1.6-1/16"	●	●	
U44-116-25	8.10mt	Steel Liner x 25ft	Moulded Nipple	1.6-1/16"	●	●	
							
UA44-116-15	4.90mt	Steel Liner x 15ft	Brass Nipple	1.6-1/16"	●	●	
UA44-116-25	8.10mt	Steel Liner x 25ft	Brass Nipple	1.6-1/16"	●	●	
							
U44N-116-15	4.90mt	Polyamide Liner x 15ft	Brass Nipple	1.6-1/16"	●	●	
U44N-116-25	8.10mt	Polyamide Liner x 25ft	Brass Nipple	1.6-1/16"	●	●	
							
U44-564-15	4.90mt	Steel Liner x 15ft	Moulded Nipple	2.0-5/64"	●	●	
U44-564-25	8.10mt	Steel Liner x 25ft	Moulded Nipple	2.0-5/64"	●	●	
							
UA44-564-15	4.90mt	Steel Liner x 15ft	Brass Nipple	2.0-5/64"	●	●	
UA44-564-25	8.10mt	Steel Liner x 25ft	Brass Nipple	2.0-5/64"	●	●	

● Standard wear part range ● Torch package standard wear part set-up

Welding & Cutting Torch Technology

JINAN UNIARC WELDING TECHNOLOGY CO., LTD

13A Zhangjin Comprehensive Bonded Zone
33688, Jing Shi Dong Road
Jinan Area of China (Shandong) Pilot Free Trade Zone
Jinan 250102, P.R. China

Tel: +86 531 88239823

Website: www.uniarctorchology.com

Email: info@uniarctorchology.com

MPU032 / V.2024.02