



Welding & Cutting Torch Technology

Product Catalogue

SPR Series



About Us

Uniarc is part of a group of companies specializing in the production of Welding and Cutting torches.

With over 40 years experience, the group is positioned as a global leader at the heart of the welding torch industry.

Originally established in the United Kingdom in the 1980's, the company is now a fully-fledged, vertically integrated Chinese product innovator and manufacturer.

Our customers span a full cross section of the industry, ranging from general distribution to leading global original equipment manufacturers.

Our products are used in a broad cross-section of industrial sectors ranging from auto body repair to ship building.

Whether you need a standard off the shelf product or a customized branded option with your own colours, logos and packaging we have a one stop solution for your requirements.

Our team are here to help, contact us today if you need anymore information.



find out more www.uniarc-torchology.com

Contents

	Features Focus	2
	Range Overview	3
	<hr/>	
Euro End	Torch Model	
	SPR 200	4
	SPR 400	5
	<hr/>	
	Features Focus	6
	Range Overview	7
	<hr/>	
Universal System	Torch Model	
	SPR 200	8
	SPR 400	9
	Universal Kits	10
	<hr/>	
	Wear Parts	
	SPR Nozzles	12
	SPR Contact Tips	12
	SPR Diffusers	12
	SPR Liners	13

Contact Tips

Heavy duty contact tips increase tip life and decrease downtime with fewer tip changes.

- Improved performance for high heat applications.

Diffuser

Heavy duty diffusers used with heavy duty tips increase tip life.

- Improved performance for high heat applications.

Nozzles

Manufactured to the same specification as the original manufacturer ensuring reliability, longevity and superior performance.

Handle System

Designed to combine balance, positioning and ergonomics with practical torch performance, cable life and consistent wire feed.

Cable Systems

Lite cable sets offer 30-40% weight saving at equivalent performance levels.

The outer jacket is constructed from cross-linked polymers providing a tear proof outer with a burn threshold of 375°C.



Euro Terminations

Fitted with unbreakable spring loaded gun plug body pins.

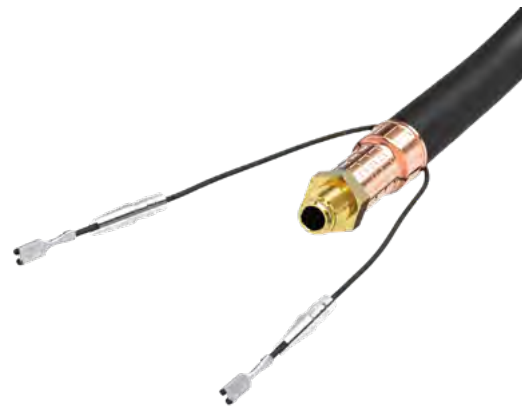


Rear Cable Support

Extra length cable support systems ensure smooth and consistent wire feed at any angle.

Housings, Nuts and Supports

Tough and damage resistant, housings and nuts are formed in robust glass-reinforced polymers encasing all conductive parts in accordance with EN60974-7.



SPR Mig / Mag Torch Series

Ratings: 200 Amp to 300 Amp, Mixed Gas M21

Euro Terminations



Technical Data

Cooling Method

Rating: CO₂

Rating: Mixed Gas M21

Duty Cycle:

Wire Size:

SPR 200A

Air-Cooled

250A

200A

60%

0.9-1.2mm /
0.035-0.045"

SPR 400A

Air-Cooled

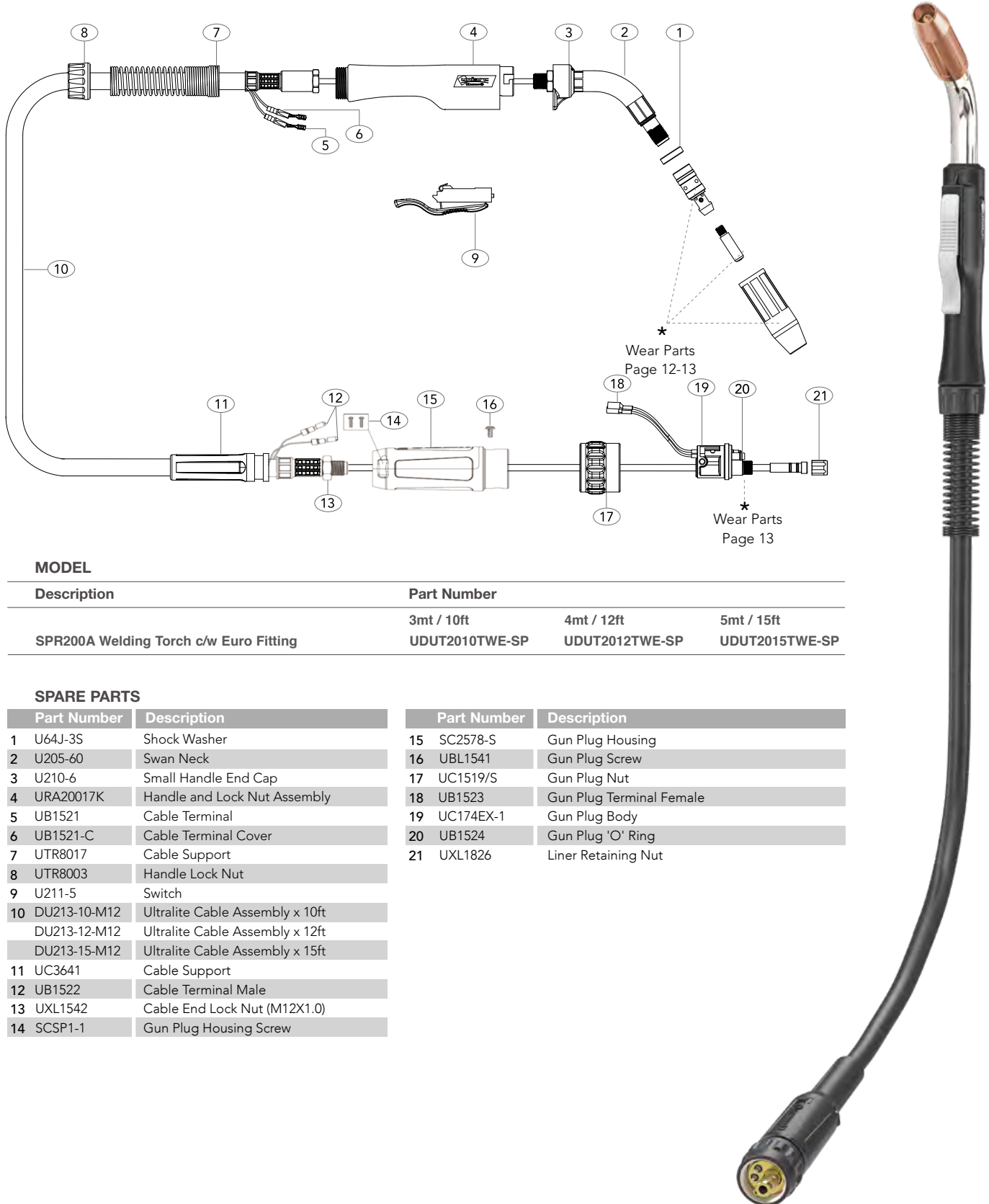
400A

300A

60%

1.0-1.6mm /
0.040-1/16"

Order Codes	10ft / 3mt	UDUT2010TWE-SP	UDUT4010TWE-SP
	12ft / 4mt	UDUT2012TWE-SP	UDUT4012TWE-SP
	15ft / 5mt	UDUT2015TWE-SP	UDUT4015TWE-SP



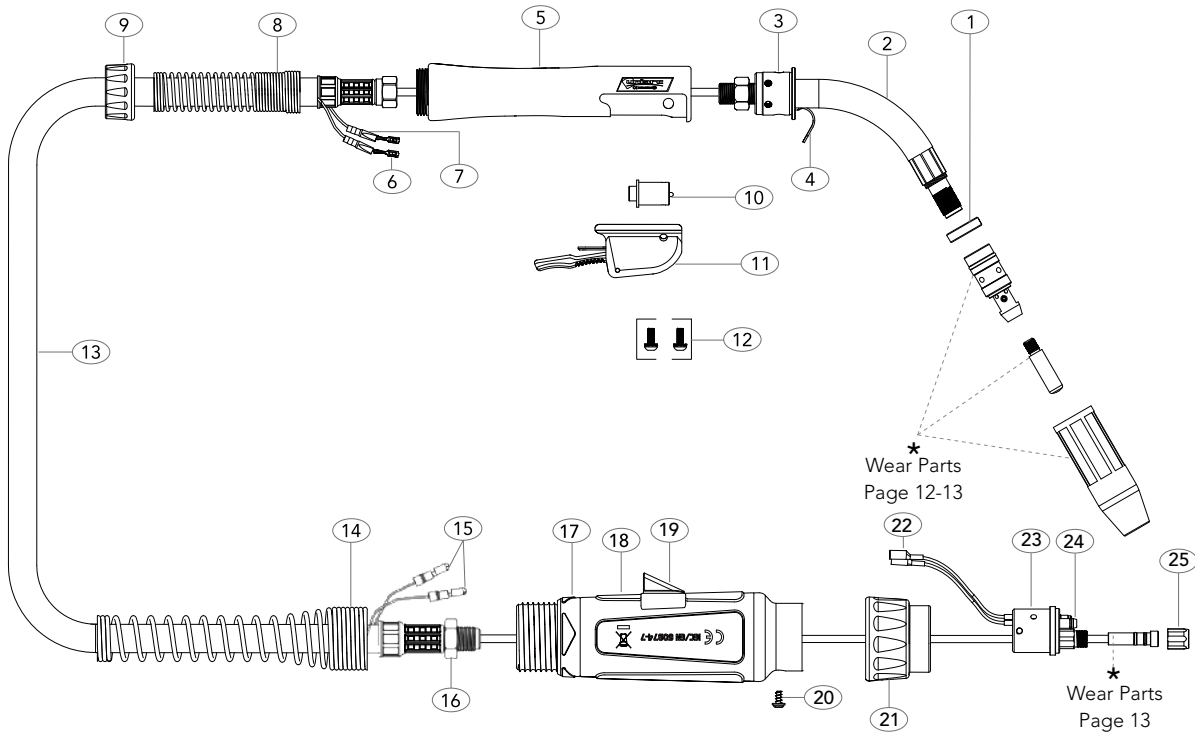
MODEL

Description	Part Number		
	3mt / 10ft	4mt / 12ft	5mt / 15ft
SPR200A Welding Torch c/w Euro Fitting	UDUT2010TWE-SP	UDUT2012TWE-SP	UDUT2015TWE-SP

SPARE PARTS

Part Number	Description	Part Number	Description
1	U64J-3S Shock Washer	15	SC2578-S Gun Plug Housing
2	U205-60 Swan Neck	16	UBL1541 Gun Plug Screw
3	U210-6 Small Handle End Cap	17	UC1519/S Gun Plug Nut
4	URA20017K Handle and Lock Nut Assembly	18	UB1523 Gun Plug Terminal Female
5	UB1521 Cable Terminal	19	UC174EX-1 Gun Plug Body
6	UB1521-C Cable Terminal Cover	20	UB1524 Gun Plug 'O' Ring
7	UTR8017 Cable Support	21	UXL1826 Liner Retaining Nut
8	UTR8003 Handle Lock Nut		
9	U211-5 Switch		
10	DU213-10-M12 Ultralite Cable Assembly x 10ft		
	DU213-12-M12 Ultralite Cable Assembly x 12ft		
	DU213-15-M12 Ultralite Cable Assembly x 15ft		
11	UC3641 Cable Support		
12	UB1522 Cable Terminal Male		
13	UXL1542 Cable End Lock Nut (M12X1.0)		
14	SCSP1-1 Gun Plug Housing Screw		

All products conform to EN60974-7, **CE** and are RoHS2, REACH and WEEE compliant



MODEL

Description	Part Number		
	3mt / 10ft	4mt / 12ft	5mt / 15ft
SPR400A Welding Torch c/w Euro Fitting	UDUT4010TWE-SP	UDUT4012TWE-SP	UDUT4015TWE-SP

SPARE PARTS

Part Number	Description	Part Number	Description
1	U64J-3S Shock Washer	15	UB1522 Cable Terminal Male
2	U405-60 Swan Neck	16	XL1542L Cable End Lock Nut (M12 X 1.0)
3	U407 Torch Body	17	UT8028 Cable Support Nut
4	UB2517 Hanger Hook	18	UT5022 Large Housing
5	URA30017K Handle and Lock Nut Assembly	19	SC8017 Large Housing Wire Cover
6	UB1521 Cable Terminal	20	UBL1526 Gun Plug Screw
7	UB1521-C Cable Terminal Cover	21	UB1519/S Gun Plug Nut
8	UTR8018 Cable Support	22	UB1523 Gun Plug Terminal Female
9	UTR8015 Handle Lock Nut	23	U174EX-1 Gun Plug Body
10	U411-1 Switch	24	UB1524 Gun Plug 'O' Ring
11	URA30017Q Switch Housing c/w Trigger	25	UXL1826 Liner Retaining Nut
12	U411-3 Screws with Washer		
13	DU413-10-M12 Ultralite Cable Assembly x 10ft		
	DU413-12-M12 Ultralite Cable Assembly x 12ft		
	DU413-15-M12 Ultralite Cable Assembly x 15ft		
14	UC8026 Housing Spring (Short)		

All products conform to EN60974-7, CE and are RoHS2, REACH and WEEE compliant

Contact Tips

Heavy duty contact tips increase tip life and decrease downtime with fewer tip changes.

- Improved performance for high heat applications.

Diffuser

Heavy duty diffusers used with heavy duty tips increase tip life.

- Improved performance for high heat applications.



Terminations

A comprehensive range of USA and European style terminations ensures worldwide compatibility.



Nozzles

Manufactured to the same specification as the original manufacturer ensuring reliability, longevity and superior performance.

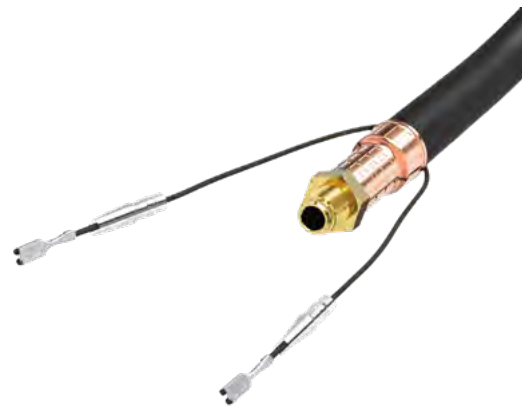
Handle System

Designed to combine balance, positioning and ergonomics with practical torch performance, cable life and consistent wire feed.

Cable Systems

Lite cable sets offer 30-40% weight saving at equivalent performance levels.

The outer jacket is constructed from cross-linked polymers providing a tear proof outer with a burn threshold of 375°C.



Rear Cable Support

Extra length cable support systems ensure smooth and consistent wire feed at any angle.

Housings, Nuts and Supports

Tough and damage resistant, housings and nuts are formed in robust glass-reinforced polymers encasing all conductive parts in accordance with EN60974-7.

SPR Mig / Mag Torch Series

Ratings: 200 Amp to 300 Amp, Mixed Gas M21

Universal Terminations



Technical Data

Cooling Method

Rating: CO₂

Rating: Mixed Gas M21

Duty Cycle:

Wire Size:

SPR 200A

Air-Cooled

250A

200A

60%

0.9-1.2mm /
0.035-0.045"

SPR 400A

Air-Cooled

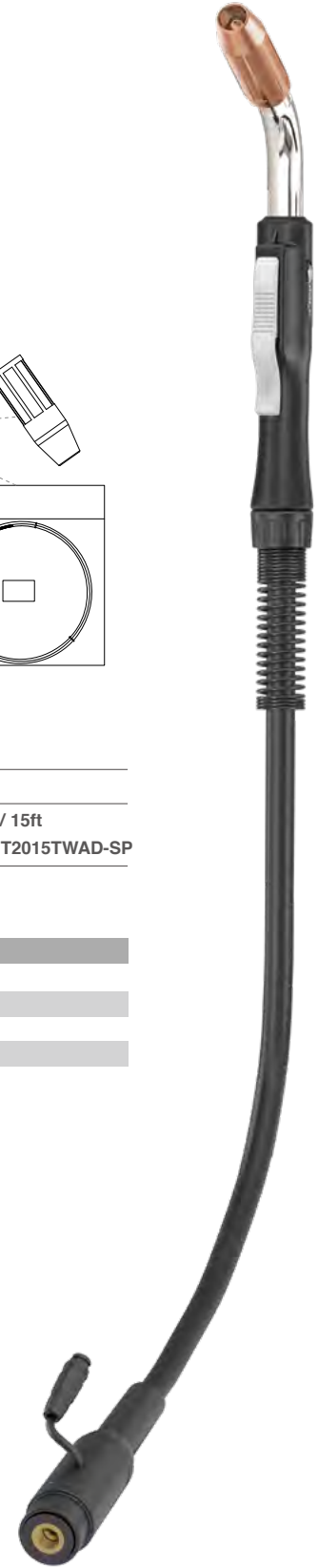
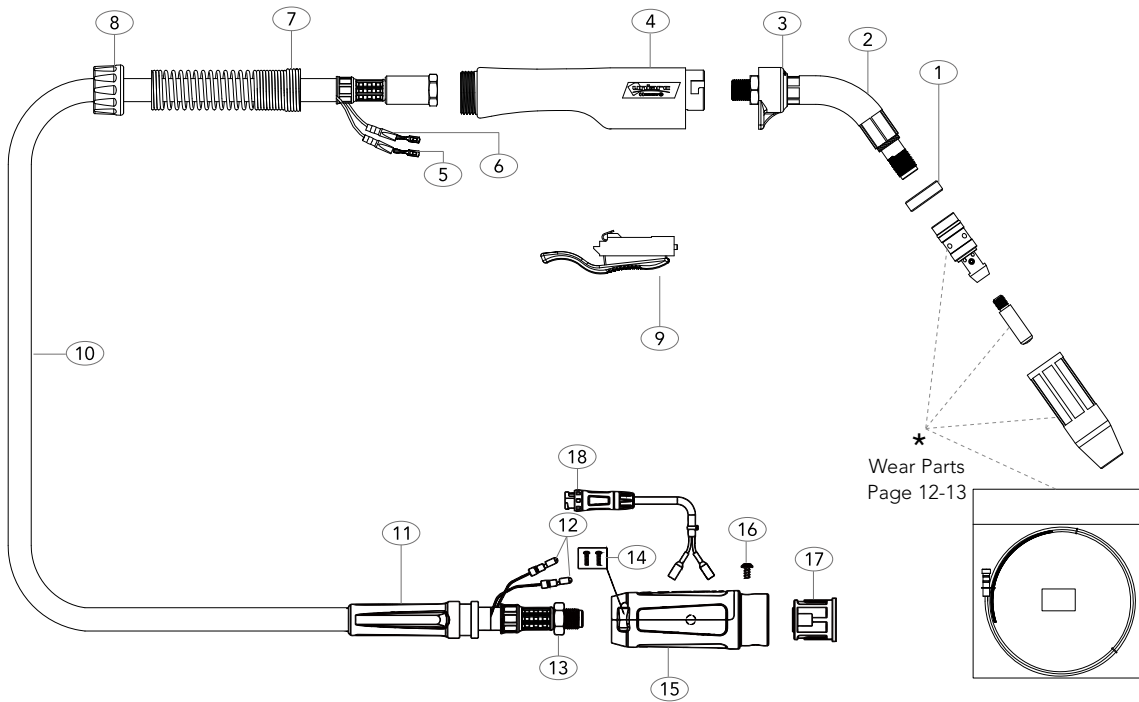
400A

300A

60%

1.0-1.6mm /
0.040-1/16"

Order Codes	10ft / 3mt	UDUT2010TWAD-SP	UDUT4010TWAD-SP
	12ft / 4mt	UDUT2012TWAD-SP	UDUT4012TWAD-SP
	15ft / 5mt	UDUT2015TWAD-SP	UDUT4015TWAD-SP



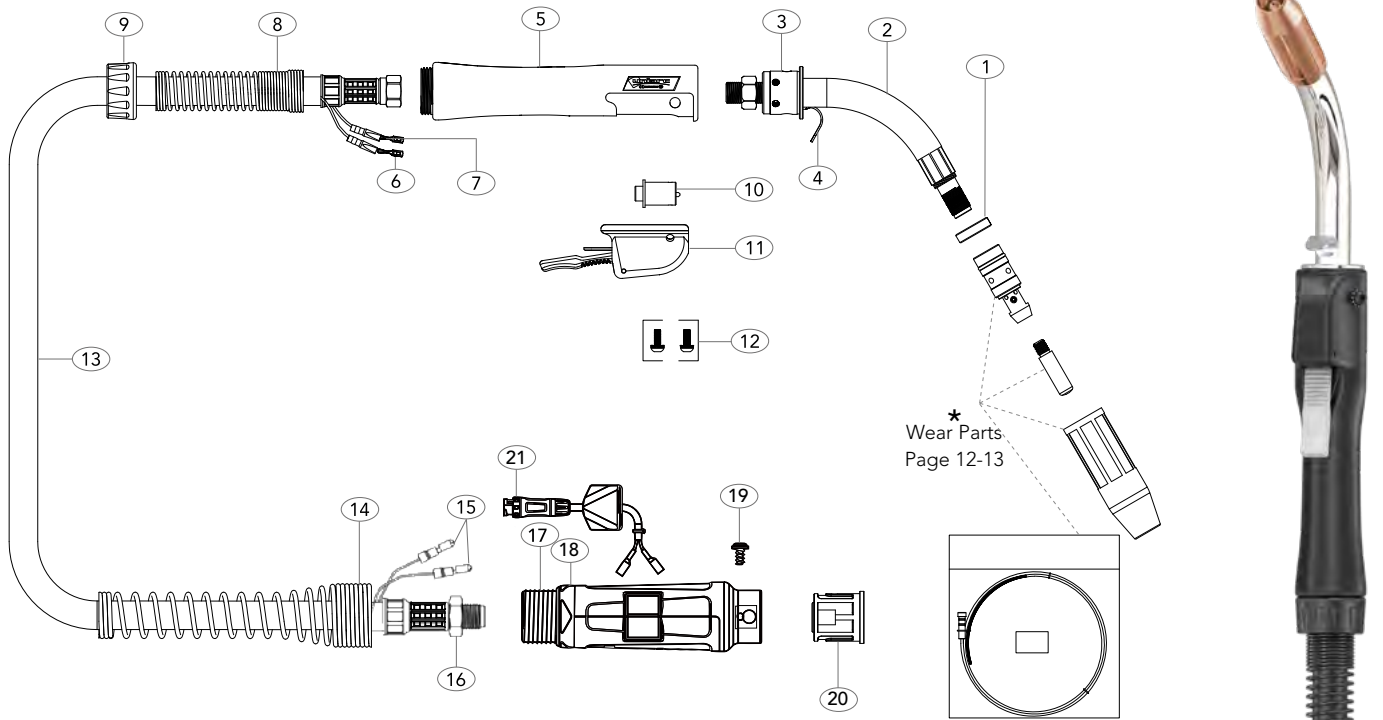
MODEL

Description	Part Number		
	3mt / 10ft	4mt / 12ft	5mt / 15ft
SPR200A Welding Torch c/w Universal Fitting	UDUT2010TWAD-SP	UDUT2012TWAD-SP	UDUT2015TWAD-SP

SPARE PARTS

Part Number	Description	Part Number	Description
1	U64J-3S Shock Washer	15	SC2578H-S Gun Plug Housing
2	U205-60 Swan Neck	16	UBL1541 Gun Plug Screw
3	U210-6 Small Handle End Cap	17	ECEM1575-2 Hybrid Plug Body TWC 1-4
4	URA20017K Handle and Lock Nut Assembly	18	UQF-SW Male Switch Wire Plug
5	UB1521 Cable Terminal		
6	UB1521-C Cable Terminal Cover		
7	UTR8017 Cable Support		
8	UTR8003 Handle Lock Nut		
9	U211-5 Switch		
10	DU213-10-M12 Ultralite Cable Assembly x 10ft		
	DU213-12-M12 Ultralite Cable Assembly x 12ft		
	DU213-15-M12 Ultralite Cable Assembly x 15ft		
11	UC3641 Cable Support		
12	UB1522 Cable Terminal Male		
13	UXL1542 Cable End Lock Nut (M12X1.0)		
14	SCSP1-1 Gun Plug Housing Screw		

All products conform to EN60974-7, **CE** and are RoHS2, REACH and WEEE compliant



MODEL

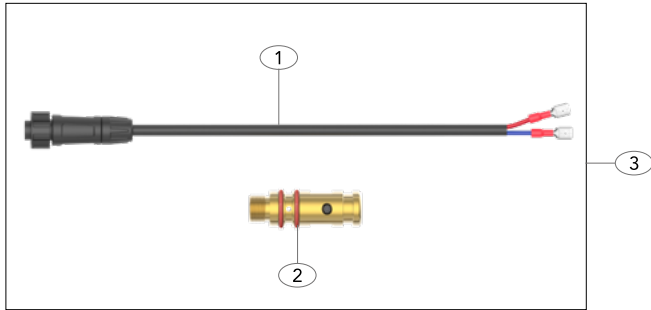
Description	Part Number		
	3mt / 10ft	4mt / 12ft	5mt / 15ft
SPR400A Welding Torch c/w Universal Fitting	UDUT4010TWAD-SP	UDUT4012TWAD-SP	UDUT4015TWAD-SP

SPARE PARTS

Part Number	Description	Part Number	Description
1	U64J-3S Shock Washer	15	UB1522 Cable Terminal Male
2	U405-60 Swan Neck	16	XL1542L Cable End Lock Nut (M12 X 1.0)
3	U407 Torch Body	17	UT8028 Large Housing Spring Connector
4	UB2517 Hanger Hook	18	UT5022 Gun Plug Housing Assembly
5	URA30017K Handle and Lock Nut Assembly	19	UBL1541 Gun Plug Screw
6	UB1521 Cable Terminal	20	ECEM1575-2 Hybrid Plug Body TWC 1-4
7	UB1521-C Cable Terminal Cover	21	UQF-SW-C Male Switch Wire Plug
8	UTR8018 Cable Support		
9	UTR8015 Handle Lock Nut		
10	U411-1 Switch		
11	URA30017Q Switch Housing c/w Trigger		
12	U411-3 Screws with Washer		
13	DU413-10-M12 Ultralite Cable Assembly x 10ft		
	DU413-12-M12 Ultralite Cable Assembly x 12ft		
	DU413-15-M12 Ultralite Cable Assembly x 15ft		
14	UC8026 Housing Spring (Short)		

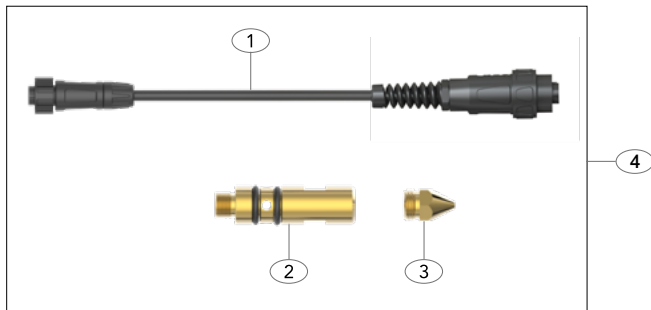
All products conform to EN60974-7, CE and are RoHS2, REACH and WEEE compliant

Tweco® Universal Kit



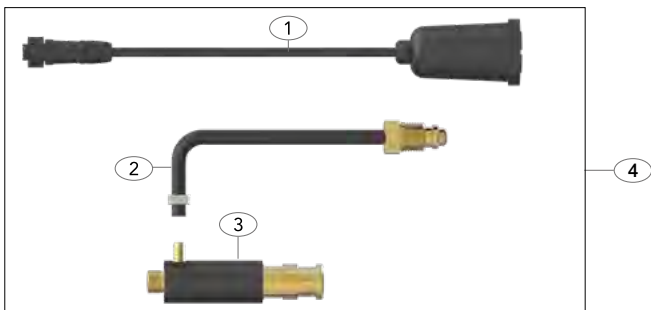
Direct Plug Connector		
Part Number	Description	
1	ECEL1575-SW-Q	Quick Fit Switch Wire Assembly
2	ECET1575-1	Tweco® 1-4 Power Pin
3	ECET1575K-Q	Quick Fit Connector Kit Complete

Miller® Universal Kit



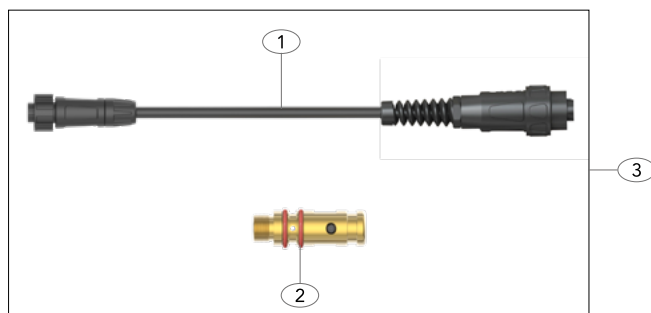
Direct Plug Connector		
Part Number	Description	
1	ECEM1575-SW-Q	Quick Fit Miller® Plug Assembly
2	ECEM1575-1	Miller® Power Pin
3	ML1570	Wire Guide 0.35"-1/16"
	ML1571	Wire Guide 5/16-3/32"(Option)
4	ECEM1575K-Q	Quick Fit Connector Kit Complete

Lincoln® Universal Kit



Direct Plug Connector		
Part Number	Description	
1	M16725-Q	Quick Fit Lincoln® Plug Assembly
2	ECEL1575N-G	Lincoln® Gas Tube Assembly
3	ECEL1575N-T	Lincoln® Power Pin
4	ECEL1575K-Q	Quick Fit Connector Kit Complete

LPW Universal Kit



Direct Plug Connector		
Part Number	Description	
1	ECEM1575-SW-Q	Quick Fit Miller® Plug Assembly
2	ECET1575-1	Tweco® 1-4 Power Pin
3	ECEW1575K-Q	Quick Fit Connector Kit Complete



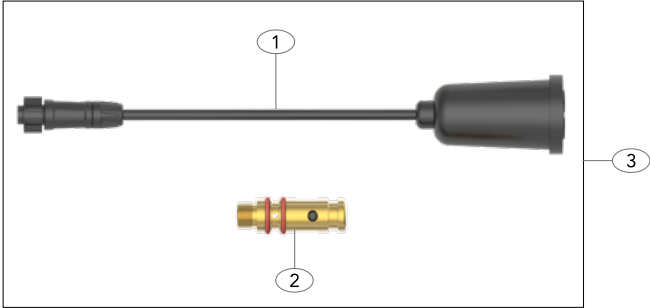
Universal Set-up Guide
A simple step by step guide

All products conform to EN60974-7, **CE** and are RoHS2, REACH and WEEE compliant

Universal Kits

Connector Kits

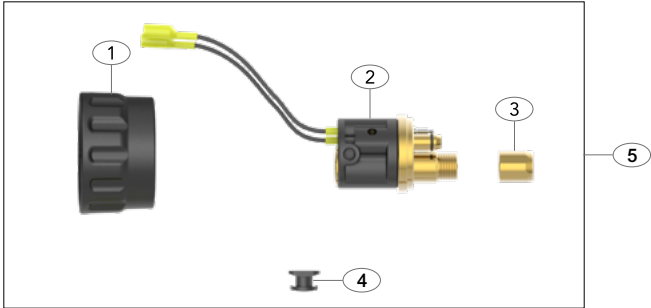
LPB Universal Kit



Direct Plug Connector	
Part Number	Description
1 M16725-Q	Quick Fit Lincoln® Plug Assembly
2 ECET1575-1	Tweco® 1-4 Power Pin
3 ECEB1575K-Q	Quick Fit Connector Kit Complete

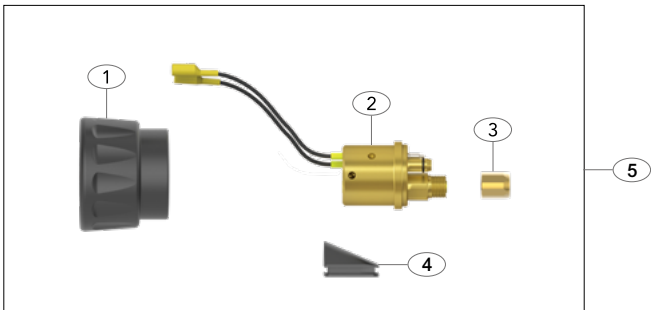
Euro Connector Kits

SPR 200 Universal Kit



Direct Plug Connector	
Part Number	Description
1 UC1519-S	Gun Plug Nut
2 UC174EX-1	Gun Plug Body
3 UXL1826	Liner Retaining Nut
4 SC2578-SP2	Housing Stopper
5 UC174EX-1-KIT-QS	Quick Fit Connector Kit Complete

SPR 400 Universal Kit



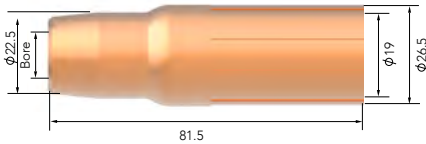
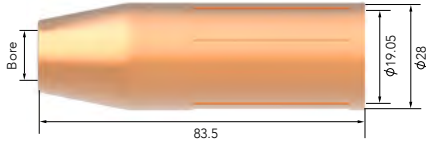
Direct Plug Connector	
Part Number	Description
1 UB1519-S	Gun Plug Nut
2 U174EX-1	Gun Plug Body
3 UXL1826	Liner Retaining Nut
4 SC8017	Large Housing Wire Cover
5 U17EX-1-KIT-QL	Quick Fit Connector Kit Complete



Universal Set-up Guide
A simple step by step guide

All products conform to EN60974-7, **CE** and are RoHS2, REACH and WEEE compliant

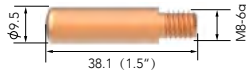
Wear Parts



SPR Nozzles

Part No.	Description	Bore	Length	Wall	Material	SPR 200	SPR 400
HD24-50	Nozzle 1/2"	12.7	83.5mm	1.5mm	Copper	●	●
HD24-62	Nozzle 5/8"	15.9	83.5mm	1.5mm	Copper	●	●
HD24-75	Nozzle 3/4"	19	83.5mm	1.5mm	Copper	●	●
HD24L-S2	Nozzle 5/8"	15.9	81.5mm	2mm	Copper	●	●

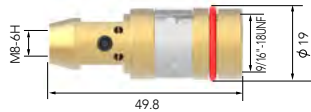
Wear Parts



SPR Contact Tips

Part No.	Description	Material	Wire Size mm-Inch	SPR 200	SPR 400
16S-35	Contact Tip	Ecu	0.9-0.035"	●	●
16S-40	Contact Tip	Ecu	1.0-0.040"	●	●
16S-45	Contact Tip	Ecu	1.2-0.045"	●	●
16S-52	Contact Tip	Ecu	1.3-0.052"	●	●
16S-116	Contact Tip	Ecu	1.6-1/16"	●	●
16S-564	Contact Tip	Ecu	2.0-5/64"	●	●

Wear Parts



SPR Diffuser

Part No.	Description	Bore	Material	SPR 200	SPR 400
HD54-16	Gas Diffuser		Brass	●	●

● Standard wear part range ● Torch package standard wear part set-up

Wear Parts

TRG Liners

Part No.	Length	Description	Nipple	Wire Size mm-inch	
----------	--------	-------------	--------	-------------------	--

SPR 200A
SPR 400A



U42-3035-15	4.90mt	Steel Liner x 15ft	Moulded Nipple	0.8-0.9/0.030-0.035"	● ●
U42-3035-25	8.10mt	Steel Liner x 25ft	Moulded Nipple	0.8-0.9/0.030-0.035"	● ●



UA42-3035-15	4.90mt	Steel Liner x 15ft	Brass Nipple	0.8-0.9/0.030-0.035"	● ●
UA42-3035-25	8.10mt	Steel Liner x 25ft	Brass Nipple	0.8-0.9/0.030-0.035"	● ●



U42-4045-15	4.90mt	Steel Liner x 15ft	Moulded Nipple	1.0-1.2/0.040-0.045"	● ●
U42-4045-25	8.10mt	Steel Liner x 25ft	Moulded Nipple	1.0-1.2/0.040-0.045"	● ●



UA42-4045-15	4.90mt	Steel Liner x 15ft	Brass Nipple	1.0-1.2/0.040-0.045"	● ●
UA42-4045-25	8.10mt	Steel Liner x 25ft	Brass Nipple	1.0-1.2/0.040-0.045"	● ●



U42N-4045-15	4.90mt	Polyamide Liner x 15ft	Brass Nipple	1.0-1.2/0.040-0.045"	● ●
U42N-4045-25	8.10mt	Polyamide Liner x 25ft	Brass Nipple	1.0-1.2/0.040-0.045"	● ●



U44-3545-15	4.90mt	Steel Liner x 15ft	Moulded Nipple	0.9-1.2/0.035-0.045"	● ●
U44-3545-25	8.10mt	Steel Liner x 25ft	Moulded Nipple	0.9-1.2/0.035-0.045"	● ●








UA44-3545-15	4.90mt	Steel Liner x 15ft	Brass Nipple	0.9-1.2/0.035-0.045"	● ●
UA44-3545-25	8.10mt	Steel Liner x 25ft	Brass Nipple	0.9-1.2/0.035-0.045"	● ●

● Standard wear part range ● Torch package standard wear part set-up

Wear Parts

TWC Liners

Part No.	Length	Description	Nipple	Wire Size mm-INCH	SPR 200	SPR 400
						
U44-116-15	4.90mt	Steel Liner x 15ft	Moulded Nipple	1.6-1/16"	●	●
U44-116-25	8.10mt	Steel Liner x 25ft	Moulded Nipple	1.6-1/16"	●	●
						
UA44-116-15	4.90mt	Steel Liner x 15ft	Brass Nipple	1.6-1/16"	●	●
UA44-116-25	8.10mt	Steel Liner x 25ft	Brass Nipple	1.6-1/16"	●	●
						
U44N-116-15	4.90mt	Polyamide Liner x 15ft	Brass Nipple	1.6-1/16"	●	●
U44N-116-25	8.10mt	Polyamide Liner x 25ft	Brass Nipple	1.6-1/16"	●	●
						
U44-564-15	4.90mt	Steel Liner x 15ft	Moulded Nipple	2.0-5/64"	●	●
U44-564-25	8.10mt	Steel Liner x 25ft	Moulded Nipple	2.0-5/64"	●	●
						
UA44-564-15	4.90mt	Steel Liner x 15ft	Brass Nipple	2.0-5/64"	●	●
UA44-564-25	8.10mt	Steel Liner x 25ft	Brass Nipple	2.0-5/64"	●	●

● Standard wear part range ● Torch package standard wear part set-up

Welding & Cutting Torch Technology

JINAN UNIARC WELDING TECHNOLOGY CO., LTD

13A Zhangjin Comprehensive Bonded Zone
33688, Jing Shi Dong Road
Jinan Area of China (Shandong) Pilot Free Trade Zone
Jinan 250102, P.R. China

Tel: +86 531 88239823

Website: www.uniarctorchology.com

Email: info@uniarctorchology.com

MPU009 / V.2025.01