



Welding & Cutting Torch Technology

Product Catalogue

TRG Series



About Us

Uniarc is part of a group of companies specializing in the production of Welding and Cutting torches.

With over 40 years experience, the group is positioned as a global leader at the heart of the welding torch industry.

Originally established in the United Kingdom in the 1980's, the company is now a fully-fledged, vertically integrated Chinese product innovator and manufacturer.

Our customers span a full cross section of the industry, ranging from general distribution to leading global original equipment manufacturers.

Our products are used in a broad cross-section of industrial sectors ranging from auto body repair to ship building.

Whether you need a standard off the shelf product or a customized branded option with your own colours, logos and packaging we have a one stop solution for your requirements.

Our team are here to help, contact us today if you need anymore information.



find out more www.uniarc-torchology.com

Contents

| | |
|----------------|---|
| Features Focus | 2 |
| Range Overview | 3 |

Torch Model

| | |
|--------|---|
| TR200A | 4 |
| TR300A | 5 |
| TR400A | 6 |
| TR500A | 7 |

Wear Parts

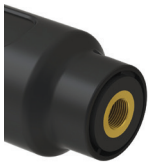
| | |
|--|----|
| TRG Nozzles - New Tough Lock™ Series | 8 |
| TRG Contact Tips - New Tough Lock™ Series | 9 |
| TRG Diffusers | 10 |
| TRG Head - New Tough Lock™ Series | 10 |
| Tough Lock™ Consumables | 12 |
| TRG Liners | 13 |

Consumable Parts

All wear and spare parts are manufactured to the same specification as the OEM and are fully interchangeable.

Hanger Hook

A "plug and play" option, they encourage the operator to hang the torch off the ground where it is easy to locate.



Terminations

A comprehensive range of USA and European style terminations ensures worldwide compatibility.



Euro Terminations

Fitted with unbreakable spring loaded gun plug body pins.



Swan Necks

Manufactured to the same specification as the OEM.

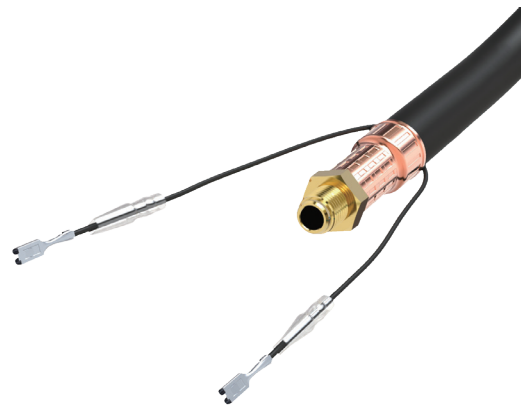
Handle System

Designed to combine balance, positioning and ergonomics with practical torch performance, cable life and consistent wire feed.

Air-Cooled Cable Systems

Cable assemblies offer outstanding flexibility with the highest heat and abrasion resistance of any known cable.

Cable end and crimp systems ensure maximum conductivity whilst the outer jacket is constructed from cross-linked polymers providing a tear proof outer with a burn threshold of 375°C.



Rear Cable Support

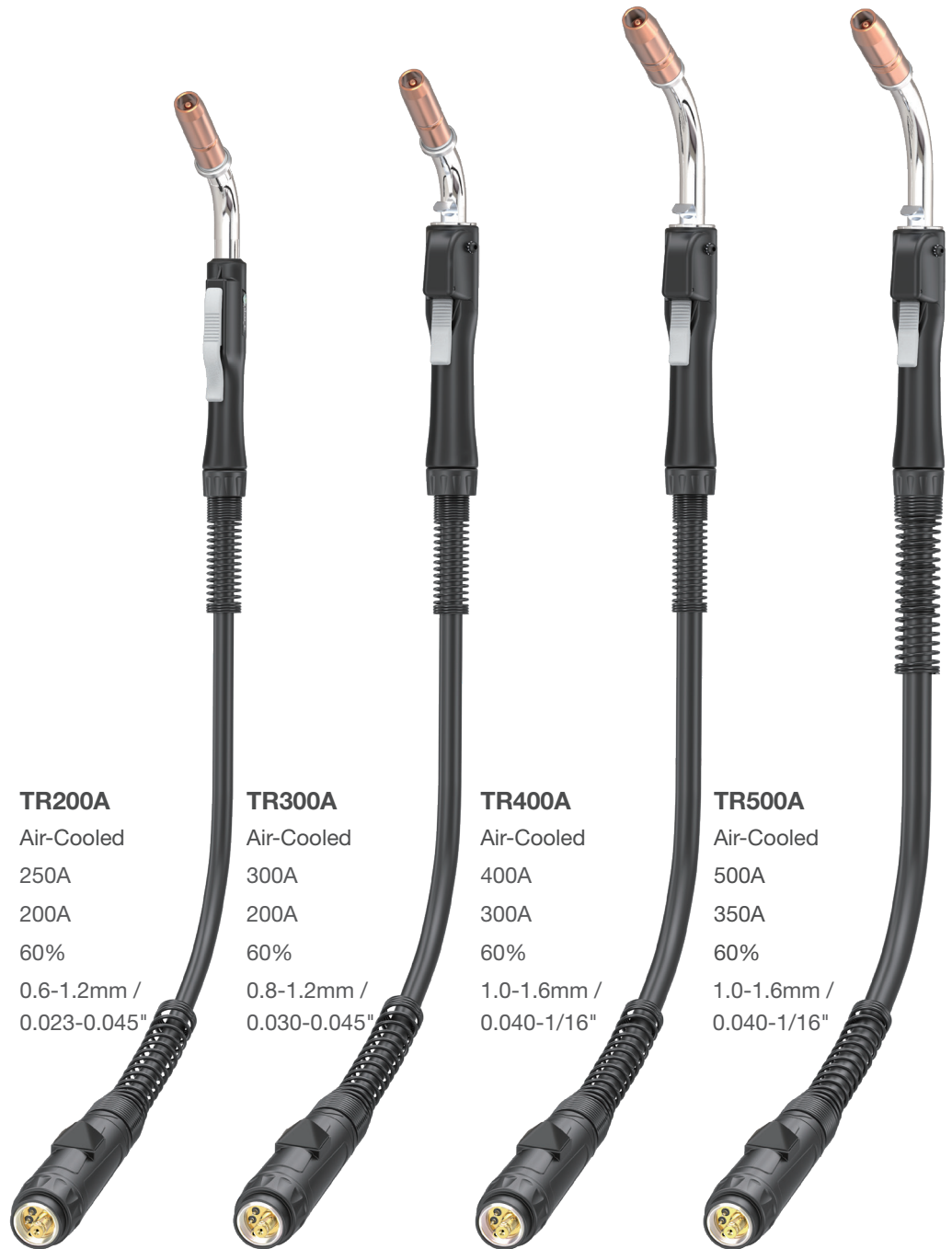
Extra length cable support systems ensure smooth and consistent wire feed at any angle.

Housings, Nuts and Supports

Tough and damage resistant, housings and nuts are formed in robust glass-reinforced polymers encasing all conductive parts in accordance with EN60974-7.

TRG Mig / Mag Torch Series

Ratings: 200 Amp to 350 Amp, Mixed Gas M21



Technical Data

Cooling Method

Rating: CO₂

Rating: Mixed Gas M21

Duty Cycle:

Wire Size:

TR200A

Air-Cooled

250A

200A

60%

0.6-1.2mm /
0.023-0.045"

TR300A

Air-Cooled

300A

200A

60%

0.8-1.2mm /
0.030-0.045"

TR400A

Air-Cooled

400A

300A

60%

1.0-1.6mm /
0.040-1/16"

TR500A

Air-Cooled

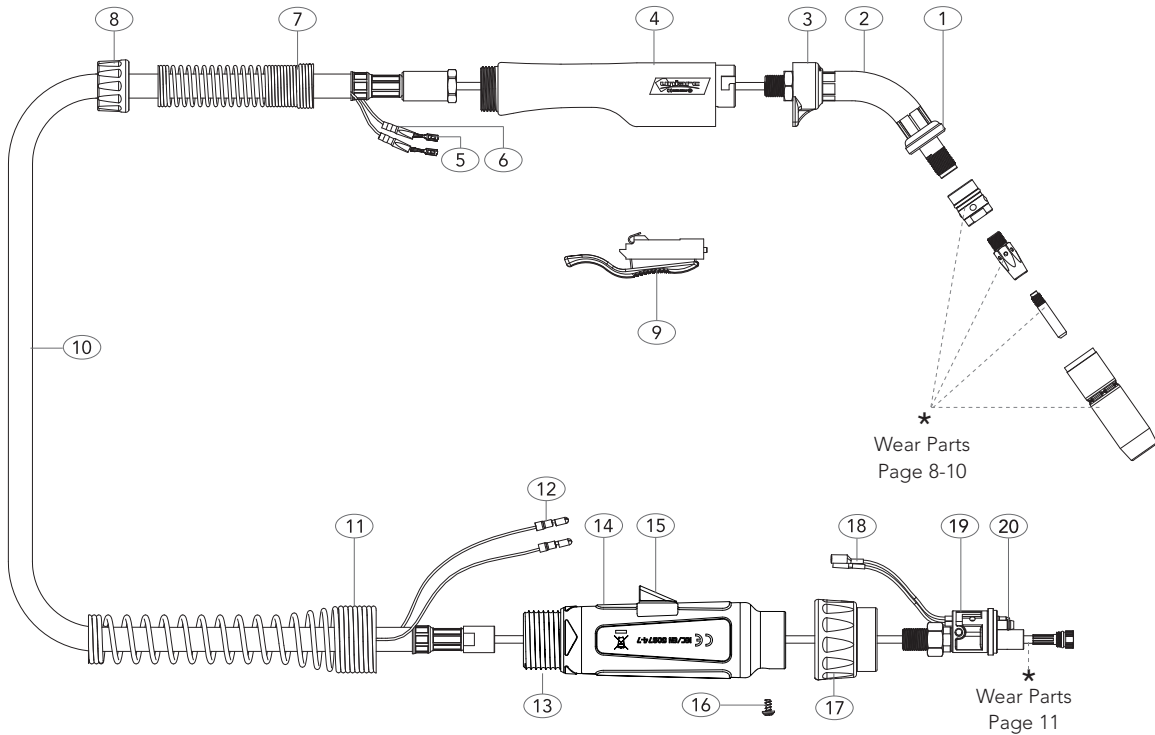
500A

350A

60%

1.0-1.6mm /
0.040-1/16"

| Order Codes | 10ft / 3mt | UT2010E | UT3010E | UT4010E | UT5010E |
|-------------|------------|---------|---------|---------|---------|
| | 12ft / 4mt | UT2012E | UT3012E | UT4012E | UT5012E |
| | 15ft / 5mt | UT2015E | UT3015E | UT4015E | UT5015E |



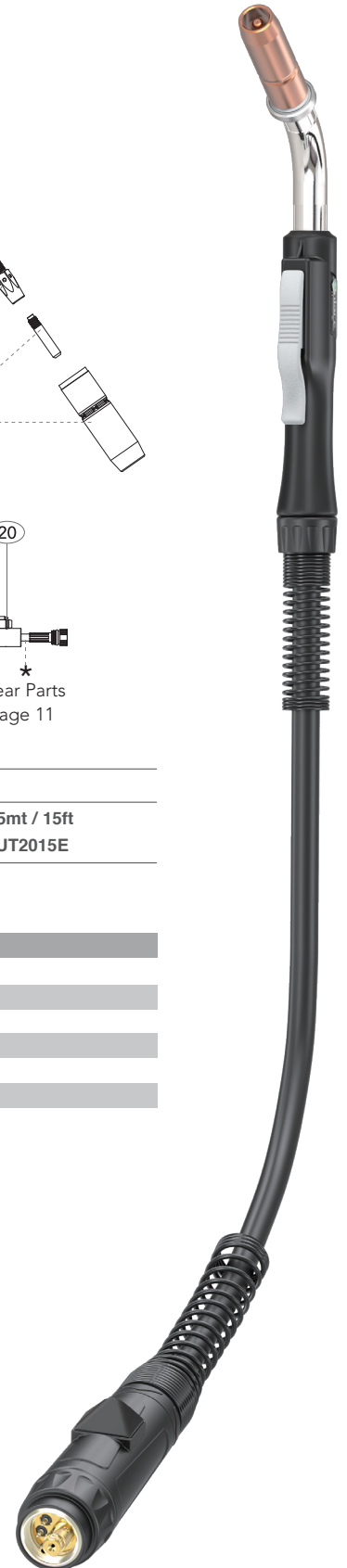
MODEL

| Description | Part Number | | |
|--------------------------------|-------------|------------|------------|
| | 3mt / 10ft | 4mt / 12ft | 5mt / 15ft |
| Welding Torch c/w Euro Fitting | UT2010E | UT2012E | UT2015E |

SPARE PARTS

| Part Number | Description | Part Number | Description |
|-------------|--|-------------|---------------------------------|
| 1 | U402-5 Shock Washer | 15 | SC8017 Large Housing Wire Cover |
| 2 | U205-60 Swan Neck | 16 | UBL1541 Gun Plug Screw |
| 3 | U210-6 Small Handle End Cap | 17 | UB1519/S Gun Plug Nut |
| 4 | URA20017K Handle And Lock Nut Assembly | 18 | UB1523 Gun Plug Terminal Female |
| 5 | UB1521 Cable Terminal | 19 | UC425-10K Euro Gun Plug Body |
| 6 | UB1521-C Cable Terminal Cover | 20 | UB1524 Gun Plug 'O' Ring |
| 7 | UTR8017 Cable Support | | |
| 8 | UTR8003 Handle Lock Nut | | |
| 9 | U211-5 Switch | | |
| 10 | U213-10 Cable Assembly x 10ft | | |
| | U213-12 Cable Assembly x 12ft | | |
| | U213-15 Cable Assembly x 15ft | | |
| 11 | UC8026 Housing Spring (Short) | | |
| 12 | UB1522 Cable Terminal Male | | |
| 13 | UT8028 Cable Support Nut | | |
| 14 | UT5022 Large Housing | | |

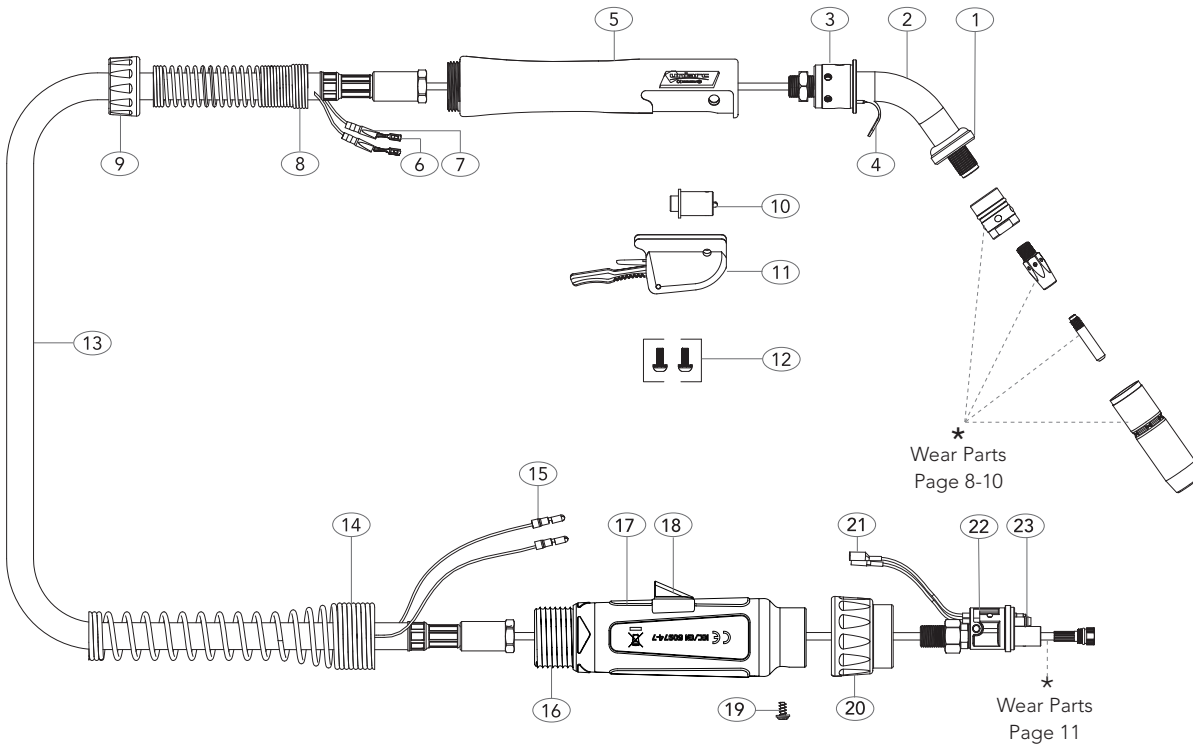
Torches are available with various terminations
-please email info@uniarctorchology.com



All products conform to EN60974-7, **CE** and are RoHS2, REACH and WEEE compliant

TR300A Air-Cooled Mig Welding Torch

Rating: 300A CO₂ 200A mixed gas M21, EN60974-7 @ 60% duty cycle. 0.8 to 1.2mm / 0.030-0.045" wires



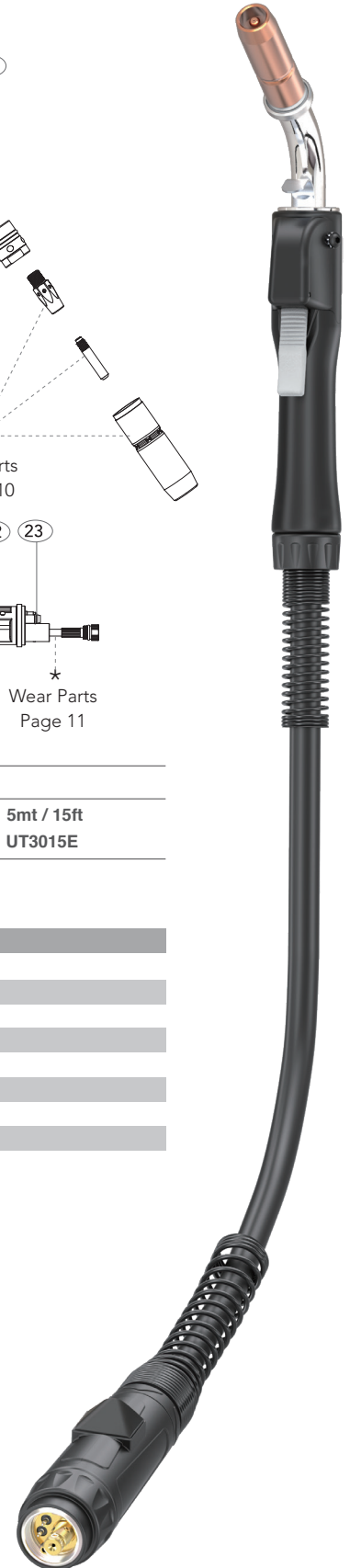
MODEL

| Description | Part Number | | |
|--------------------------------|-------------|------------|------------|
| | 3mt / 10ft | 4mt / 12ft | 5mt / 15ft |
| Welding Torch c/w Euro Fitting | UT3010E | UT3012E | UT3015E |

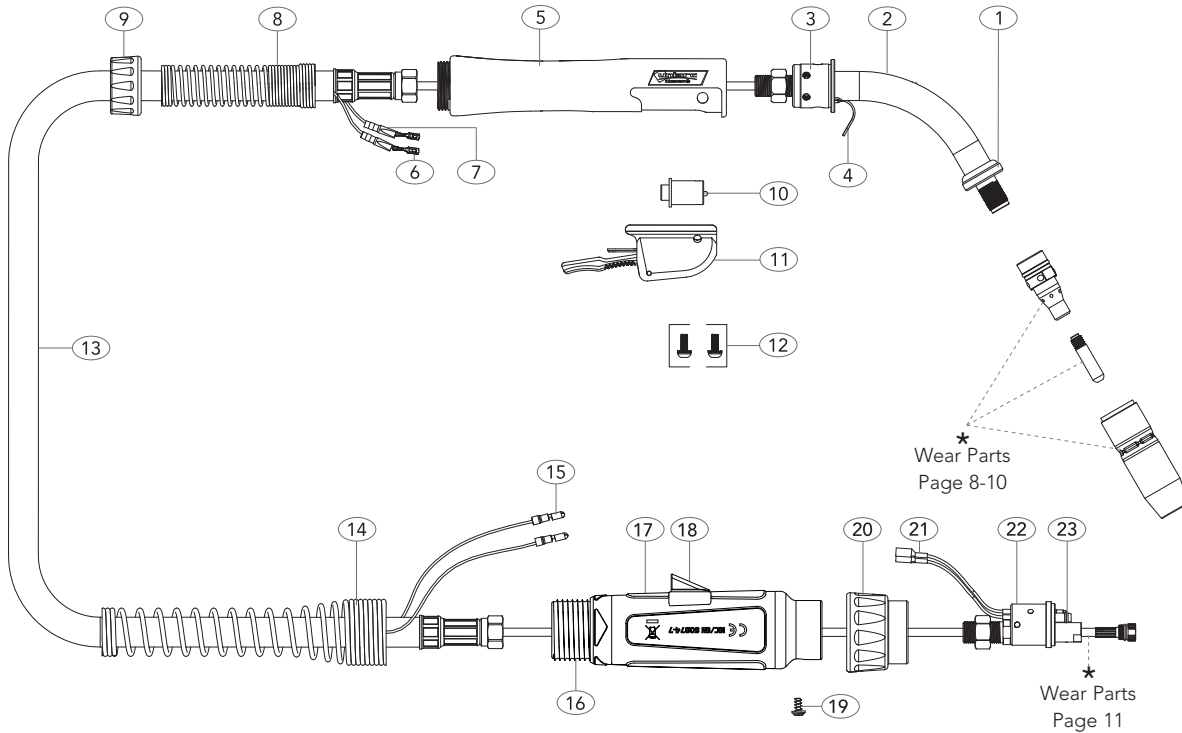
SPARE PARTS

| Part Number | Description | Part Number | Description |
|-------------|--|-------------|---------------------------------|
| 1 | U402-5 Shock Washer | 15 | UB1522 Cable Terminal Male |
| 2 | U305-60 Swan Neck | 16 | UT8028 Cable Support Nut |
| 3 | U407 Torch Body | 17 | UT5022 Large Housing |
| 4 | UB2517 Hanger Hook | 18 | SC8017 Large Housing Wire Cover |
| 5 | URA30017K Handle And Lock Nut Assembly | 19 | UBL1541 Gun Plug Screw |
| 6 | UB1521 Cable Terminal | 20 | UB1519/S Gun Plug Nut |
| 7 | UB1521-C Cable Terminal Cover | 21 | UB1523 Gun Plug Terminal Female |
| 8 | UTR8018 Cable Support | 22 | UC425-10K Euro Gun Plug Body |
| 9 | UTR8015 Handle Lock Nut | 23 | UB1524 Gun Plug 'O' Ring |
| 10 | U411-1 Switch | | |
| 11 | URA30017Q Switch Housing c/w Trigger | | |
| 12 | U411-3 Screws c/w Washer | | |
| 13 | U313-10 Cable Assembly x 10ft | | |
| | U313-12 Cable Assembly x 12ft | | |
| | U313-15 Cable Assembly x 15ft | | |
| 14 | UC8026 Housing Spring (Short) | | |

Torches are available with various terminations
-please email info@uniarctorchology.com



All products conform to EN60974-7, CE and are RoHS2, REACH and WEEE compliant



MODEL

| Description | Part Number | | |
|--------------------------------|-------------|------------|------------|
| | 3mt / 10ft | 4mt / 12ft | 5mt / 15ft |
| Welding Torch c/w Euro Fitting | UT4010E | UT4012E | UT4015E |

SPARE PARTS

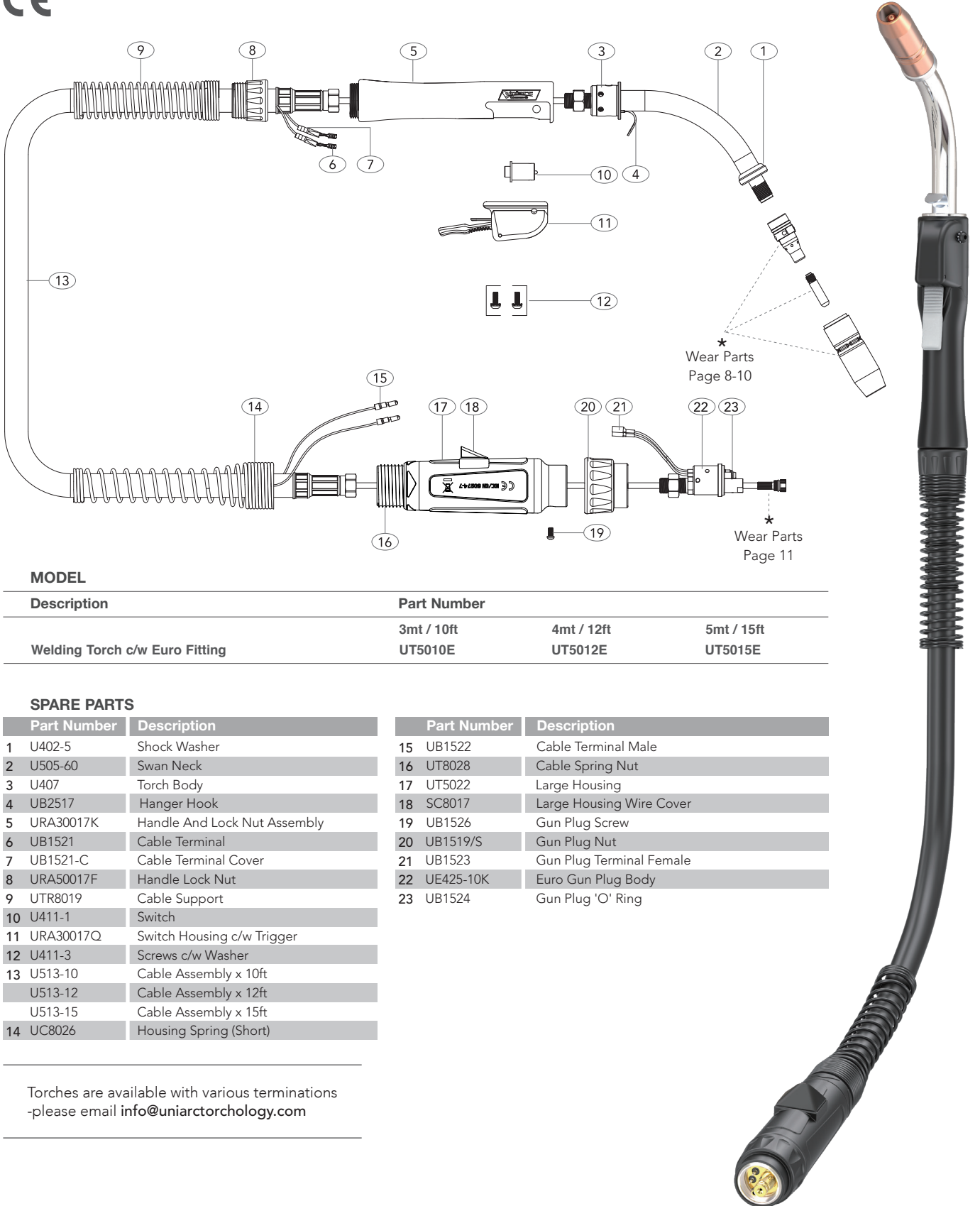
| Part Number | Description | Part Number | Description |
|--------------|------------------------------|--------------|--------------------------|
| 1 U402-5 | Shock Washer | 15 UB1522 | Cable Terminal Male |
| 2 U405-60 | Swan Neck | 16 UT8028 | Cable Support Nut |
| 3 U407 | Torch Body | 17 UT5022 | Large Housing |
| 4 UB2517 | Hanger Hook | 18 SC8017 | Large Housing Wire Cover |
| 5 URA30017K | Handle And Lock Nut Assembly | 19 UBL1541 | Gun Plug Screw |
| 6 UB1521 | Cable Terminal | 20 UB1519/S | Gun Plug Nut |
| 7 UB1521-C | Cable Terminal Cover | 21 UB1523 | Gun Plug Terminal Female |
| 8 UTR8018 | Cable Support | 22 UC425-10K | Euro Gun Plug Body |
| 9 UTR8015 | Handle Lock Nut | 23 UB1524 | Gun Plug 'O' Ring |
| 10 U411-1 | Switch | | |
| 11 URA30017Q | Switch Housing c/w Trigger | | |
| 12 U411-3 | Screws with Washer | | |
| 13 U413-10 | Cable Assembly x 10ft | | |
| U413-12 | Cable Assembly x 12ft | | |
| U413-15 | Cable Assembly x 15ft | | |
| 14 UC8026 | Housing Spring (Short) | | |

Torches are available with various terminations
-please email info@uniarctorchology.com

All products conform to EN60974-7, **CE** and are RoHS2, REACH and WEEE compliant

TR500A Air-Cooled Mig Welding Torch

Rating: 500A CO₂ 350A mixed gas M21, EN60974-7 @ 60% duty cycle. 1.0 to 1.6mm / 0.040-1/16" wires



MODEL

| Description | Part Number | | |
|--------------------------------|-------------|------------|------------|
| | 3mt / 10ft | 4mt / 12ft | 5mt / 15ft |
| Welding Torch c/w Euro Fitting | UT5010E | UT5012E | UT5015E |

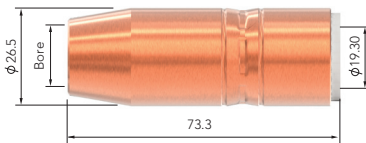
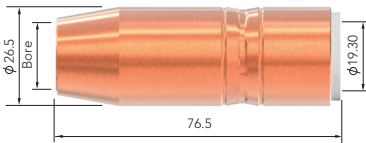
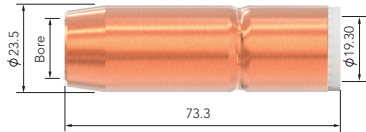
SPARE PARTS

| Part Number | Description | Part Number | Description |
|-------------|--|-------------|---------------------------------|
| 1 | U402-5 Shock Washer | 15 | UB1522 Cable Terminal Male |
| 2 | U505-60 Swan Neck | 16 | UT8028 Cable Spring Nut |
| 3 | U407 Torch Body | 17 | UT5022 Large Housing |
| 4 | UB2517 Hanger Hook | 18 | SC8017 Large Housing Wire Cover |
| 5 | URA30017K Handle And Lock Nut Assembly | 19 | UB1526 Gun Plug Screw |
| 6 | UB1521 Cable Terminal | 20 | UB1519/S Gun Plug Nut |
| 7 | UB1521-C Cable Terminal Cover | 21 | UB1523 Gun Plug Terminal Female |
| 8 | URA50017F Handle Lock Nut | 22 | UE425-10K Euro Gun Plug Body |
| 9 | UTR8019 Cable Support | 23 | UB1524 Gun Plug 'O' Ring |
| 10 | U411-1 Switch | | |
| 11 | URA30017Q Switch Housing c/w Trigger | | |
| 12 | U411-3 Screws c/w Washer | | |
| 13 | U513-10 Cable Assembly x 10ft | | |
| | U513-12 Cable Assembly x 12ft | | |
| | U513-15 Cable Assembly x 15ft | | |
| 14 | UC8026 Housing Spring (Short) | | |

Torches are available with various terminations
-please email info@uniarctorchology.com

All products conform to EN60974-7, **CE** and are RoHS2, REACH and WEEE compliant

Wear Parts



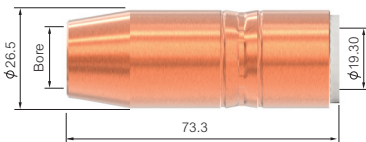
TRG Nozzles

| Part No. | Description | Bore | Wall | Material | TR200A | TR300A | TR400A | TR500A |
|-----------|----------------------------------|------|--------|----------|--------|--------|--------|--------|
| U401-4-38 | 1/8" Recess Tip 3/8" Bore Nozzle | 9.50 | 2.25mm | Copper | ● | ● | ● | ● |
| U401-4-50 | 1/8" Recess Tip 1/2" Bore Nozzle | 12.7 | 2.25mm | Copper | ● | ● | ● | ● |
| U401-4-62 | 1/8" Recess Tip 5/8" Bore Nozzle | 16.0 | 2.25mm | Copper | ● | ● | ● | ● |
| U401-4-75 | 1/8" Recess Tip 3/4" Bore Nozzle | 19.0 | 2.25mm | Copper | ● | ● | ● | ● |

| | | | | | | | | |
|-----------|----------------------------------|------|-------|--------|---|---|---|---|
| U401-5-50 | 1/4" Recess Tip 1/2" Bore Nozzle | 12.7 | 2.4mm | Copper | ● | ● | ● | ● |
| U401-5-62 | 1/4" Recess Tip 5/8" Bore Nozzle | 16.0 | 2.4mm | Copper | ● | ● | ● | ● |
| U401-5-75 | 1/4" Recess Tip 3/4" Bore Nozzle | 19.0 | 2.4mm | Copper | ● | ● | ● | ● |

| | | | | | | | | |
|-----------|----------------------------------|------|-------|--------|---|---|---|---|
| U401-6-50 | 1/8" Recess Tip 1/2" Bore Nozzle | 12.7 | 2.4mm | Copper | ● | ● | ● | ● |
| U401-6-62 | 1/8" Recess Tip 5/8" Bore Nozzle | 16.0 | 2.4mm | Copper | ● | ● | ● | ● |
| U401-6-75 | 1/8" Recess Tip 3/4" Bore Nozzle | 19.0 | 2.4mm | Copper | ● | ● | ● | ● |

Wear Parts

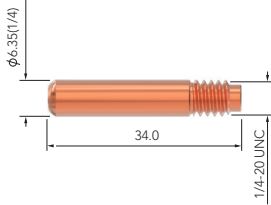


Tough Lock™ Nozzles

| Part No. | Description | Bore | Wall | Material |
|-----------|----------------------------------|------|-------|----------|
| U401-6-50 | 1/8" Recess Tip 1/2" Bore Nozzle | 12.7 | 2.4mm | Copper |
| U401-6-62 | 1/8" Recess Tip 5/8" Bore Nozzle | 16.0 | 2.4mm | Copper |
| U401-6-75 | 1/8" Recess Tip 3/4" Bore Nozzle | 19.0 | 2.4mm | Copper |

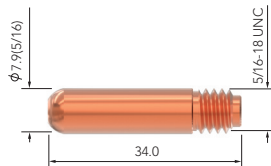
● Standard wear part range ● Torch package standard wear part set-up

Wear Parts



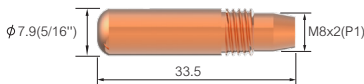
TRG Contact Tips

| Part No. | Description | Material | Wire Size MM-INCH | TR200A | TR300A | TR400A | TR500A |
|----------|-------------|----------|----------------------|--------|--------|--------|--------|
| U403-10 | Contact Tip | Ecu | 1.0-0.040 | ● | ● | ● | ● |
| U403-23 | Contact Tip | Ecu | 0.6-0.023 | ● | ● | ● | ● |
| U403-30 | Contact Tip | Ecu | 0.8-0.030 | ● | ● | ● | ● |
| U403-35 | Contact Tip | Ecu | 0.9-0.035 | ● | ● | ● | ● |
| U403-45 | Contact Tip | Ecu | 1.2-0.045 | ● | ● | ● | ● |
| U403-52 | Contact Tip | Ecu | 1.3-0.052 | ● | ● | ● | ● |
| U403-116 | Contact Tip | Ecu | 1.6-1/16" | ● | ● | ● | ● |



| | | | | | | | |
|------------|-------------|-----|-----------|---|---|---|---|
| U403-1-10 | Contact Tip | Ecu | 1.0-0.040 | ● | ● | ● | ● |
| U403-1-30 | Contact Tip | Ecu | 0.8-0.030 | ● | ● | ● | ● |
| U403-1-35 | Contact Tip | Ecu | 0.9-0.035 | ● | ● | ● | ● |
| U403-1-45 | Contact Tip | Ecu | 1.2-0.045 | ● | ● | ● | ● |
| U403-1-52 | Contact Tip | Ecu | 1.3-0.052 | ● | ● | ● | ● |
| U403-1-55 | Contact Tip | Ecu | 1.4-0.055 | ● | ● | ● | ● |
| U403-1-1.8 | Contact Tip | Ecu | 1.8-0.071 | ● | ● | ● | ● |
| U403-1-116 | Contact Tip | Ecu | 1.6-1/16" | ● | ● | ● | ● |
| U403-1-332 | Contact Tip | Ecu | 2.4-3/32" | ● | ● | ● | ● |
| U403-1-364 | Contact Tip | Ecu | 1.2-3/64" | ● | ● | ● | ● |
| U403-1-564 | Contact Tip | Ecu | 2.0-5/64" | ● | ● | ● | ● |

Wear Parts

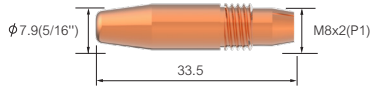


Tough Lock™ Contact Tips

| Part No. | Description | Material | Wire Size MM-INCH |
|-------------|----------------|----------|----------------------|
| U403-20-30 | HD Contact Tip | Ecu | 0.8-0.030 |
| U403-20-35 | HD Contact Tip | Ecu | 0.9-0.035 |
| U403-20-10 | HD Contact Tip | Ecu | 1.0-0.040 |
| U403-20-45 | HD Contact Tip | Ecu | 1.2-0.045 |
| U403-20-52 | HD Contact Tip | Ecu | 1.3-0.052 |
| U403-20-55 | HD Contact Tip | Ecu | 1.4-0.055 |
| U403-20-116 | HD Contact Tip | Ecu | 1.6-1/16" |
| U403-20-564 | HD Contact Tip | Ecu | 2.0-5/64" |
| U403-20-332 | HD Contact Tip | Ecu | 2.4-3/32" |

● Standard wear part range ● Torch package standard wear part set-up

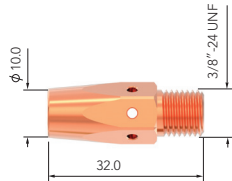
Wear Parts



Tough Lock™ Contact Tips

| Part No. | Description | Material | Wire Size MM-INCH |
|-------------|----------------|----------|----------------------|
| U403-21-30 | HD Tapered Tip | Ecu | 0.8-0.030 |
| U403-21-35 | HD Tapered Tip | Ecu | 0.9-0.035 |
| U403-21-10 | HD Tapered Tip | Ecu | 1.0-0.040 |
| U403-21-45 | HD Tapered Tip | Ecu | 1.2-0.045 |
| U403-21-52 | HD Tapered Tip | Ecu | 1.3-0.052 |
| U403-21-116 | HD Tapered Tip | Ecu | 1.6-1/16" |

Wear Parts



TRG Diffusers

| Part No. | Description | Material | TR200A | TR300A | TR400A | TR500A |
|----------|--------------------------|----------|--------|--------|--------|--------|
| U404 | Gas Diffuser For Std Tip | Copper | ● | ● | ● | ● |
| U404-1 | Gas Diffuser For HD Tip | Copper | ● | ● | ● | ● |

TRG Head

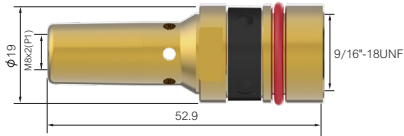
| Part No. | Description | Material | TR200A | TR300A | TR400A | TR500A |
|----------|-------------------------|----------|--------|--------|--------|--------|
| U402-3 | Retaining Head Assembly | Brass | ● | ● | ● | ● |
| U404-3 | Retaining Head Assembly | Brass | ● | ● | ● | ● |

● Standard wear part range ● Torch package standard wear part set-up

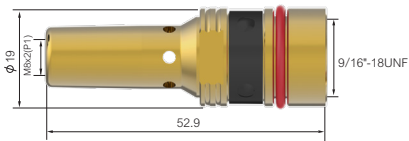
Wear Parts

Tough Lock™ Retaining Head

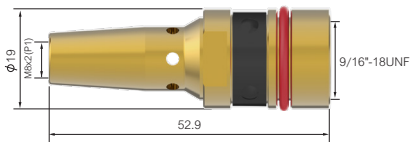
Part No. Description Material



| | | |
|---------|-------------------------|-------|
| U404-20 | Retaining Head Assembly | Brass |
|---------|-------------------------|-------|



| | | |
|---------|------------------------------------|-------|
| U404-26 | Dual Taper Retaining Head Assembly | Brass |
|---------|------------------------------------|-------|

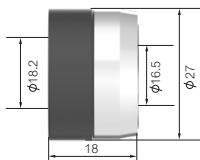


| | | |
|---------|-------------------------|-------|
| U404-30 | Retaining Head Assembly | Brass |
|---------|-------------------------|-------|

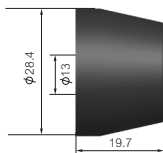
Wear Parts

Tough Lock™ Neck Insulator

Part No. Description

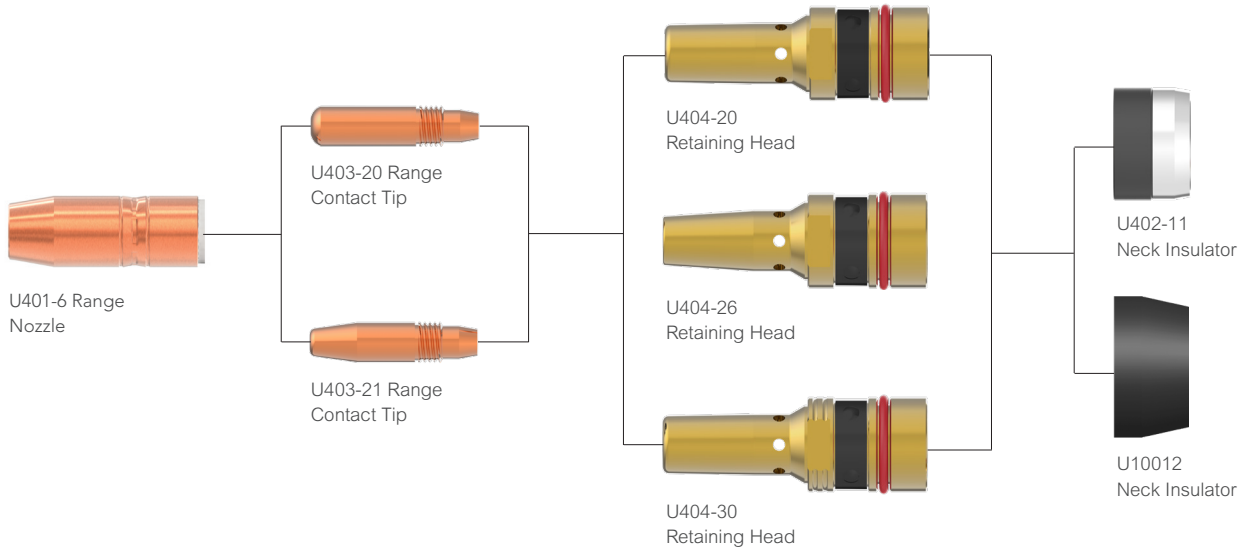


| | |
|---------|----------------|
| U402-11 | Neck Insulator |
|---------|----------------|



| | |
|--------|----------------|
| U10012 | Neck Insulator |
|--------|----------------|





To Install / Replace Tough Lock™ Consumables



*Tough Lock™ Wear parts Part No. and sizes are available on pages 8-11

Wear Parts

TRG Liners

| Part No. | Length | Description | Nipple | Wire Size mm-inch | TR200A | TR300A | TR400A | TR500A |
|--|--------|--------------------|--------------|-----------------------|--------|--------|--------|--------|
|  | | | | | | | | |
| U415-23-10B | 3.8mt | Steel Liner x 10ft | Brass Nipple | 0.6 / 0.023 | ● | ● | ● | ● |
| U415-23-15B | 4.9mt | Steel Liner x 15ft | Brass Nipple | 0.6 / 0.023 | ● | ● | ● | ● |
| U415-23-25B | 8.1mt | Steel Liner x 25ft | Brass Nipple | 0.6 / 0.023 | ● | ● | ● | ● |
|  | | | | | | | | |
| U415-30-10B | 3.8mt | Steel Liner x 10ft | Brass Nipple | 0.8 / 0.030 | ● | ● | ● | ● |
| U415-30-15B | 4.9mt | Steel Liner x 15ft | Brass Nipple | 0.8 / 0.030 | ● | ● | ● | ● |
| U415-30-25B | 8.1mt | Steel Liner x 25ft | Brass Nipple | 0.8 / 0.030 | ● | ● | ● | ● |
|  | | | | | | | | |
| U415-35-10B | 3.8mt | Steel Liner x 10ft | Brass Nipple | 0.9-1.0 / 0.035-0.040 | ● | ● | ● | ● |
| U415-35-15B | 4.9mt | Steel Liner x 15ft | Brass Nipple | 0.9-1.0 / 0.035-0.040 | ● | ● | ● | ● |
| U415-35-25B | 8.1mt | Steel Liner x 25ft | Brass Nipple | 0.9-1.0 / 0.035-0.040 | ● | ● | ● | ● |
|  | | | | | | | | |
| U415-116-1B | 0.3mt | Steel Liner x 1ft | Brass Nipple | 1.2-1.6 / 0.045-1/16" | ● | ● | ● | ● |
| U415-116-10B | 3.8mt | Steel Liner x 10ft | Brass Nipple | 1.2-1.6 / 0.045-1/16" | ● | ● | ● | ● |
| U415-116-15B | 4.9mt | Steel Liner x 15ft | Brass Nipple | 1.2-1.6 / 0.045-1/16" | ● | ● | ● | ● |
| U415-116-25B | 8.1mt | Steel Liner x 25ft | Brass Nipple | 1.2-1.6 / 0.045-1/16" | ● | ● | ● | ● |

● Standard wear part range ● Torch package standard wear part set-up

Welding & Cutting Torch Technology

JINAN UNIARC WELDING TECHNOLOGY CO., LTD

13A Zhangjin Comprehensive Bonded Zone
33688, Jing Shi Dong Road
Jinan Area of China (Shandong) Pilot Free Trade Zone
Jinan 250102, P.R. China

Tel: +86 531 88239823

Website: www.uniarctorchology.com

Email: info@uniarctorchology.com

MPU009 / V.2024.07